

Share :      | 

Listen

As of 25 August 2020, 12pm, the Ministry of Health (MOH) has confirmed 31 new cases of COVID-19 infection in Singapore.

Among the cases:

- Imported cases: **1**
 - 1 Permanent Resident

There is 1 imported case today. Case 56496 is a Singapore Permanent Resident who returned to Singapore from India on 13 August. She had been placed on 14-day Stay-Home Notice (SHN) upon arrival in Singapore, and was tested while she was serving SHN at a dedicated facility.

- Cases in the community: **0**
 - There are no cases in the community today.

Overall, the number of new cases in the community has remained stable at an average of 2 cases per day in the past 2 weeks. The number of unlinked cases in the community has also remained stable at an average of 1 case per day in the past 2 weeks.

- Cases residing in dormitories: **30**

Of the new cases, 94% are imported or linked to known cases/ clusters, while the rest are pending contact tracing.

230 more cases of COVID-19 infection have been discharged from hospitals or community isolation facilities. In all, 54,816 have fully recovered from the infection and have been discharged from hospitals or community care facilities.

Most of the 78 confirmed cases who are still in hospital are stable or improving. None is in the intensive care unit.

1,514 cases who have mild symptoms, or are clinically well but still test positive for COVID-19 are isolated and cared for at community facilities.

27 have passed away from complications due to COVID-19 infection.

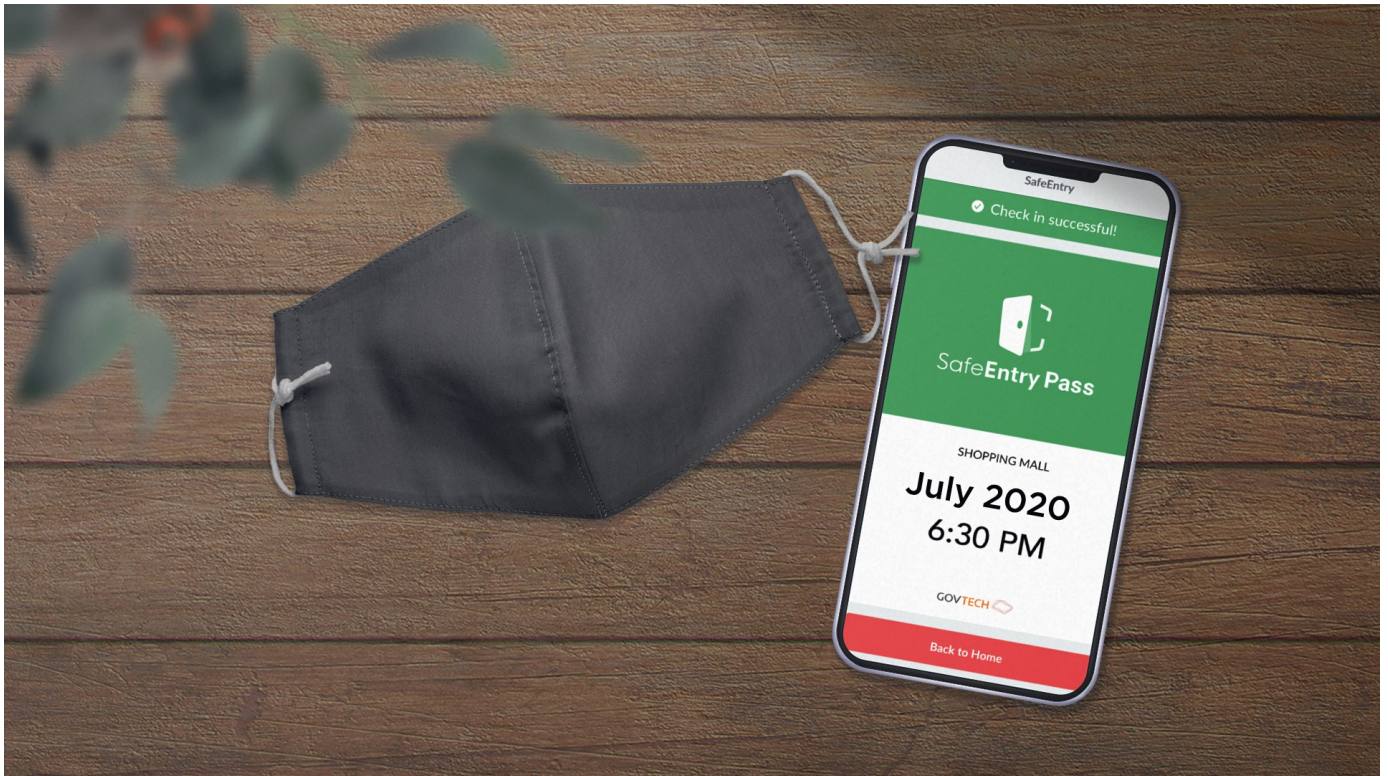
Related link: [List of public places visited by confirmed cases in the community during Infectious Period](#)

For more details, refer to [MOH's press release](#).

Share:      | 

PART OF A SPECIAL FEATURE

COVID-19 (Coronavirus Disease 2019)



EXPLORE 

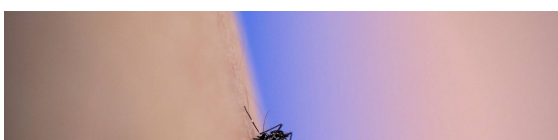
RELATED ARTICLES



COVID-19: Updates and announcements



Updates to safe-distancing measures for outdoor exercise classes, malls, and F&B - from 29 Aug onwards



Warning signs that your dengue infection is getting worse



[Further steps towards a new COVID normal](#)



[Dengue: Know the symptoms and how to protect yourself](#)



Is this page useful? [Yes](#) • [No](#)

[Is there anything wrong with this page?](#)

Most Popular

[Further steps towards a new COVID normal](#)

[Phase Two: Easing of restrictions on key life events](#)

[Enhanced surveillance and enforcement efforts in Phase 2](#)

[Moving into Phase 2: What activities can resume](#)

[Gov.sg How-Tos: How to keep safe when gathering with loved ones](#)

[FAQ](#)

[Privacy Statement](#)

[Terms of Use](#)

[Rate This Website](#)

[Report Vulnerability](#)



This site is best viewed using IE9.039 & above and Chrome.

© 2020 Government of Singapore Last updated on 25 Aug 2020