

Share :      | 

Listen

As of 1 September 2020, 12pm, the Ministry of Health (MOH) has confirmed 40 new cases of COVID-19 infection in Singapore.

Among the cases:

- Imported cases: **7**

- 3 Singaporeans/ Permanent Residents, 2 Work Pass holders, 1 Dependant's Pass holder, 1 Short-Term Visit Pass holder

Amongst the 7 imported cases, 3 are Singaporeans/ Permanent Residents who returned to Singapore from India on 16 August, and the US on 18 August. 2 cases are Work Pass holders currently employed in Singapore who arrived from Bangladesh and Brazil on 16 August. Another case is a Dependant's Pass holder who arrived from Bangladesh on 16 August. The remaining case is a Short-Term Visit Pass holder whose parents are Singapore Permanent Residents. All of them had been placed on 14-day Stay-Home Notice (SHN) upon arrival in Singapore, and had been tested while serving their SHN at dedicated facilities.

- Cases in the community: **1**

- 1 Work Pass holder

There is 1 case in the community today who is currently unlinked. The case was detected as a result of our Rostered Routine Testing of workers in the construction, marine and process sectors who are living outside the dormitories. She was asymptomatic, and was detected through proactive testing.

Overall, the number of new cases in the community has increased, from an average of 2 cases per day in the week before, to an average of 3 per day in the past week. The number of unlinked cases in the community has remained stable at an average of 1 case per day in the past 2 weeks.

- Cases residing in dormitories: **32**

Amongst the 32 cases residing in dormitories, 22 had been identified earlier as contacts of previous cases, and had already been quarantined to prevent further transmission. They were tested during quarantine to determine their status.

The remaining 10 cases were detected through surveillance testing, such as our bi-weekly Rostered Routine Testing of workers living in dormitories and testing of those with acute respiratory infection (ARI) symptoms. This allows us to pick up cases early, including asymptomatic ones, so that we are able to ring-fence them quickly to prevent further

transmission, by aggressively containing, tracing and isolating the close contacts.

Of the new cases, 98% are imported or linked to known cases/ clusters, while the rest are pending contact tracing.

91 more cases of COVID-19 infection have been discharged from hospitals or community isolation facilities. In all, 55,749 have fully recovered from the infection and have been discharged from hospitals or community care facilities.

Most of the 86 confirmed cases who are still in hospital are stable or improving. None is in the intensive care unit.

990 cases who have mild symptoms, or are clinically well but still test positive for COVID-19 are isolated and cared for at community facilities.

27 have passed away from complications due to COVID-19 infection.

Related link: [List of public places visited by confirmed cases in the community during Infectious Period](#)

For more details, refer to MOH's [press release](#).

TOPICS

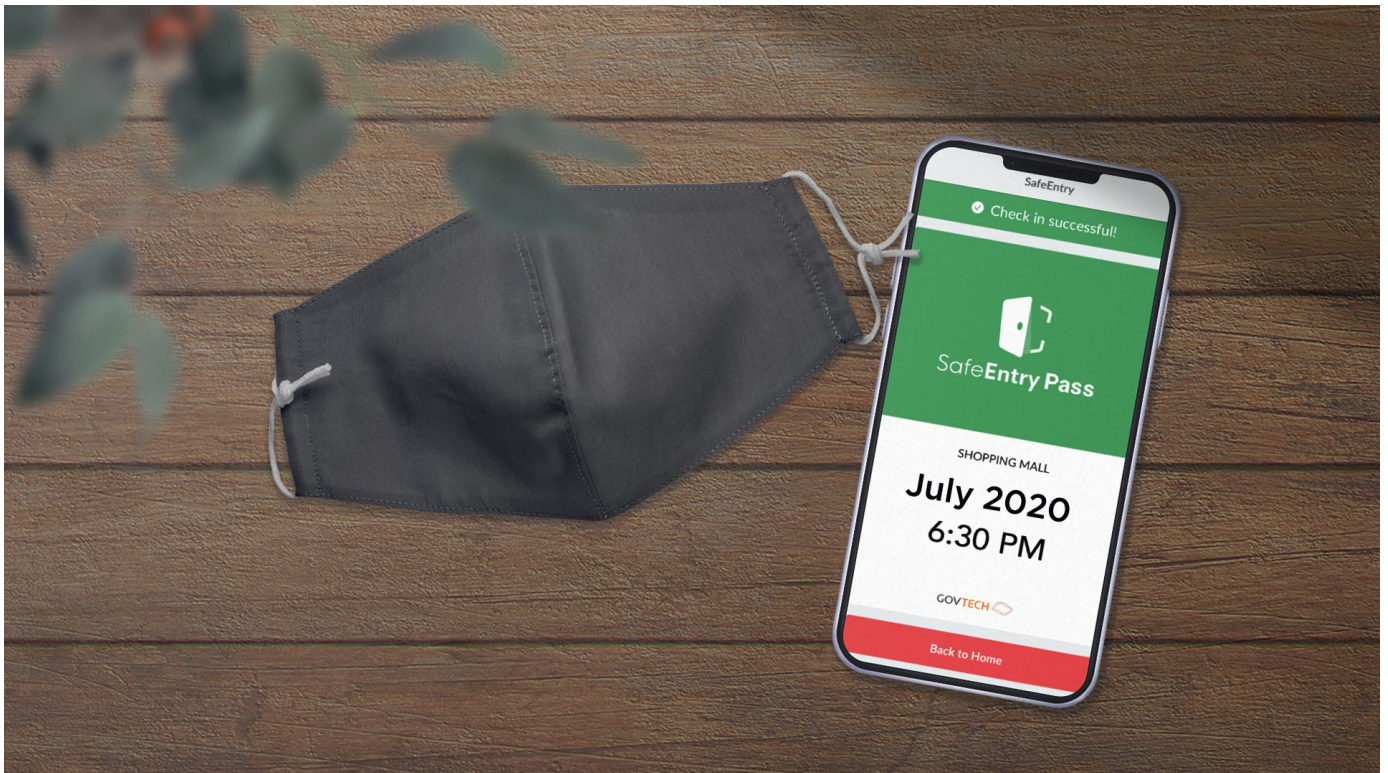
HEALTH

COVID-19

Share :      | 

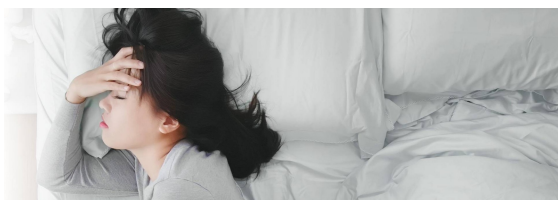
PART OF A SPECIAL FEATURE

COVID-19 (Coronavirus Disease 2019)



[EXPLORE](#) 

RELATED ARTICLES



What should you do when you have dengue?



COVID-19 Resources



COVID-19: Updates and announcements



Cost of SHN stays, swab tests, and medical expenses when you travel



Updates to safe-distancing measures for outdoor exercise classes, malls, and F&B - from 29 Aug onwards

Is this page useful? [Yes](#) • [No](#)

Is there anything wrong with this page?

Most Popular

Updates to safe-distancing measures for outdoor exercise classes, malls, and F&B - from 29 Aug onwards

Updates to border measures for low-risk countries/regions from 1 Sep

Cost of SHN stays, swab tests, and medical expenses when you travel

More support for workers and jobs through the Jobs Support Scheme and COVID-19 Support Grant

Phase Two: Easing of restrictions on key life events



[Who We Are](#)

[Contact](#)

[FAQ](#)

[Privacy Statement](#)

[Terms of Use](#)

[Rate This Website](#)

[Report Vulnerability](#)



This site is best viewed using IE9.039 & above and Chrome.

© 2020 Government of Singapore Last updated on 01 Sep 2020