

Share :      | 

Listen

As of 5 September 2020, 12pm, the Ministry of Health (MOH) has confirmed 34 new cases of COVID-19 infection in Singapore.

Among the cases:

- Imported cases: **2**
 - 2 Singaporeans

Both imported cases are Singaporeans who returned to Singapore from Australia on 25 August and India on 24 August. They had been placed on 14-day Stay-Home Notice (SHN) upon arrival in Singapore, and had been tested while serving their SHN.

- Cases in the community: **3**
 - 1 Singaporean, 2 Work Permit holders

Of the 3 cases in the community, 2 were picked up as a result of our proactive surveillance and screening, and 1 had already been isolated earlier. All 3 cases are asymptomatic, and currently unlinked.

Overall, the number of new cases in the community has increased, from an average of 2 cases per day in the week before, to an average of 3 per day in the past week. The number of unlinked cases in the community has remained stable at an average of 1 case per day in the past 2 weeks.

- Cases residing in dormitories: **29**

Amongst the 29 cases residing in dormitories, 14 had been identified earlier as contacts of previous cases, and had already been quarantined to prevent further transmission. They were tested during quarantine to determine their status.

The remaining 15 cases were detected through surveillance testing.

Of the new cases, 88% are imported or linked to known cases/ clusters, while the rest are pending contact tracing.

93 more cases of COVID-19 infection have been discharged from hospitals or community isolation facilities. In all, 56,174 have fully recovered from the infection and have been discharged from hospitals or community care facilities.

Most of the 50 confirmed cases who are still in hospital are stable or improving. None is in the intensive care unit.

638 cases who have mild symptoms, or are clinically well but still test positive for COVID-19 are isolated and cared for at community facilities.

27 have passed away from complications due to COVID-19 infection.

Related link: [List of public places visited by confirmed cases in the community during Infectious Period](#)

For more details, refer to MOH's [press release](#).

TOPICS

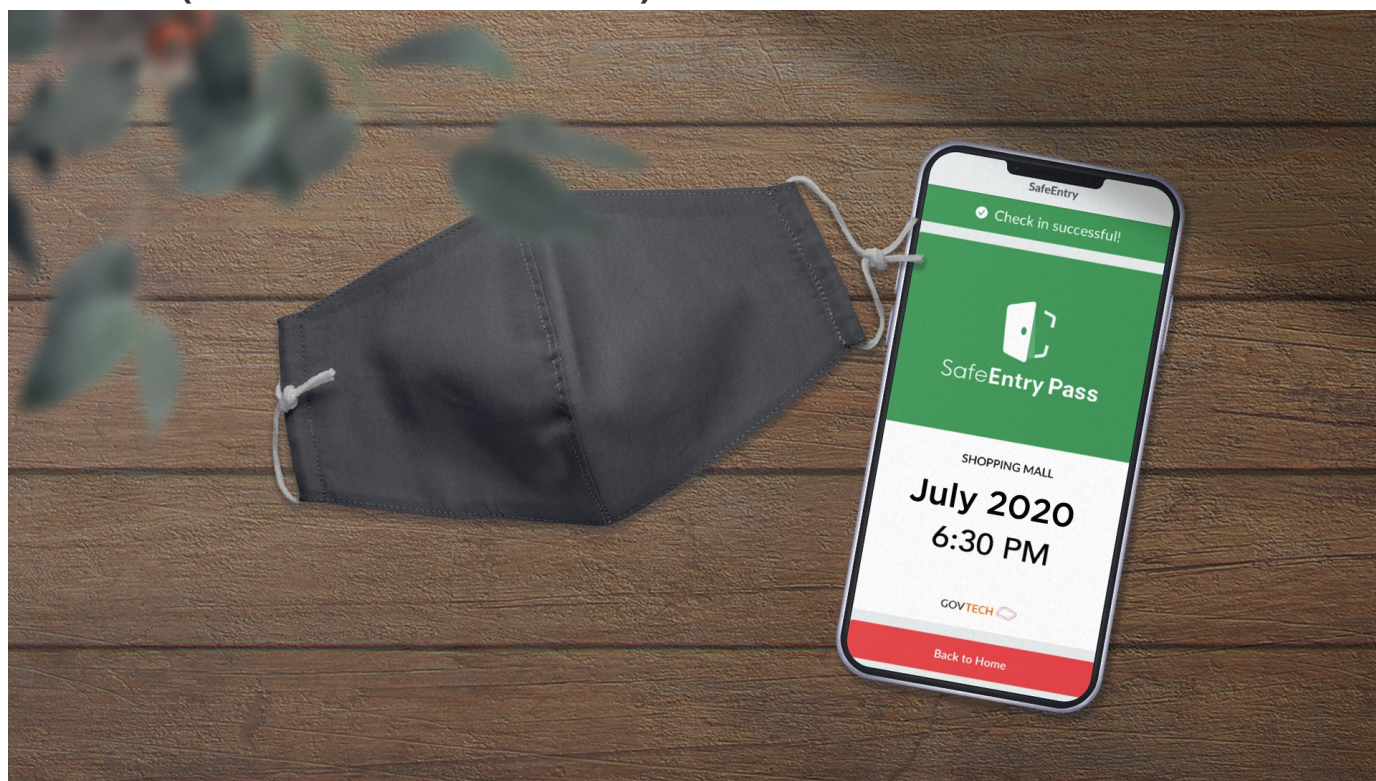
HEALTH

COVID-19

Share:      | 

PART OF A SPECIAL FEATURE

COVID-19 (Coronavirus Disease 2019)

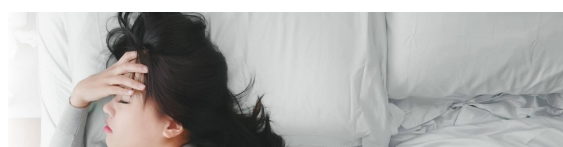


EXPLORE 

RELATED ARTICLES



COVID-19: Updates and announcements



What should you do when you have dengue?



COVID-19 Resources



Cost of SHN stays, swab tests, and medical expenses when you travel



Updates to safe-distancing measures for outdoor exercise classes, malls, and F&B - from 29 Aug onwards

Is this page useful? [Yes](#) • [No](#)

Is there anything wrong with this page?

Most Popular

Updates to safe-distancing measures for outdoor exercise classes, malls, and F&B - from 29 Aug onwards

Updates to border measures for low-risk countries/regions from 1 Sep

Cost of SHN stays, swab tests, and medical expenses when you travel

More support for workers and jobs through the Jobs Support Scheme and COVID-19 Support Grant

Phase Two: Easing of restrictions on key life events



[Who We Are](#)

[Contact](#)

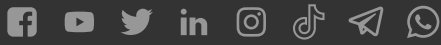
[FAQ](#)

[Privacy Statement](#)

[Terms of Use](#)

[Rate This Website](#)

[Report Vulnerability](#)



This site is best viewed using IE9.039 & above and Chrome.

© 2020 Government of Singapore Last updated on 05 Sep 2020