

Share :      | 

Listen

As of 10 September 2020, 12pm, the Ministry of Health (MOH) has confirmed 63 new cases of COVID-19 infection in Singapore.

Among the cases:

- Imported cases: **6**
 - 1 Singaporean, 2 Work Pass holders, 2 Work Permit holders, 1 Student's Pass holder

Amongst the 6 imported cases, 1 a Singaporean who returned to Singapore from the UAE on 29 August. Another 4 cases are Work Pass/ Work Permit holders currently employed in Singapore who arrived from Bangladesh on 31 August, and Indonesia and Russia on 29 August. The remaining case is a Student's Pass holder who arrived from the Philippines on 27 August.

All of them had been placed on 14-day Stay-Home Notice (SHN) upon arrival in Singapore, and had been tested while serving their SHN at dedicated facilities.

- Cases in the community: **2**
 - 1 Singaporean, 1 Work Permit holder

Of the 2 cases in the community, 1 was picked up as a result of our proactive surveillance and screening, and 1 had already been isolated earlier.

One case is linked to previous imported cases who are his family members. They had returned from India on 24 August, and were placed on SNH at a dedicated facility upon arrival in Singapore. While Case 57312 had not travelled overseas with them, he had requested to take care of his spouse and young children at the SHN facility, and was isolated with them from 24 August.

There is 1 case in the community who is currently unlinked. The case was detected as a result of Rostered Routine Testing of workers in the construction, marine and process sectors who are living outside the dormitories, even though he is asymptomatic.

Overall, the number of new cases in the community has decreased, from an average of 3 cases per day in the week before, to an average of 2 per day in the past week. The number of unlinked cases in the community has also decreased, from an average of 2 cases per day in the week before, to an average of 1 per day in the past week.

- Cases residing in dormitories: **55**

Amongst the 55 cases residing in dormitories, 26 had been identified earlier as contacts of previous cases, and had already been quarantined to prevent further transmission. They were tested during quarantine to determine their status.

The remaining 29 cases were detected through surveillance testing, such as the bi-weekly Rostered Routine Testing of workers living in dormitories.

Of the cases residing in dormitories today, 26 are from Avery Lodge, the majority of whom had been placed on quarantine earlier and were tested during quarantine to determine their status. The remaining cases were detected through surveillance testing, such as the bi-weekly Rostered Routine Testing.

Of the new cases, 97% are imported or linked to known cases/clusters, while the rest are pending contact tracing.

66 more cases of COVID-19 infection have been discharged from hospitals or community isolation facilities. In all, 56,558 have fully recovered from the infection and have been discharged from hospitals or community care facilities.

Most of the 47 confirmed cases who are still in hospital are stable or improving. None is in the intensive care unit.

597 cases who have mild symptoms, or are clinically well but still test positive for COVID-19 are isolated and cared for at community facilities.

27 have passed away from complications due to COVID-19 infection.

Related link: [List of public places visited by confirmed cases in the community during Infectious Period](#)

For more details, refer to MOH's [press release](#).

TOPICS

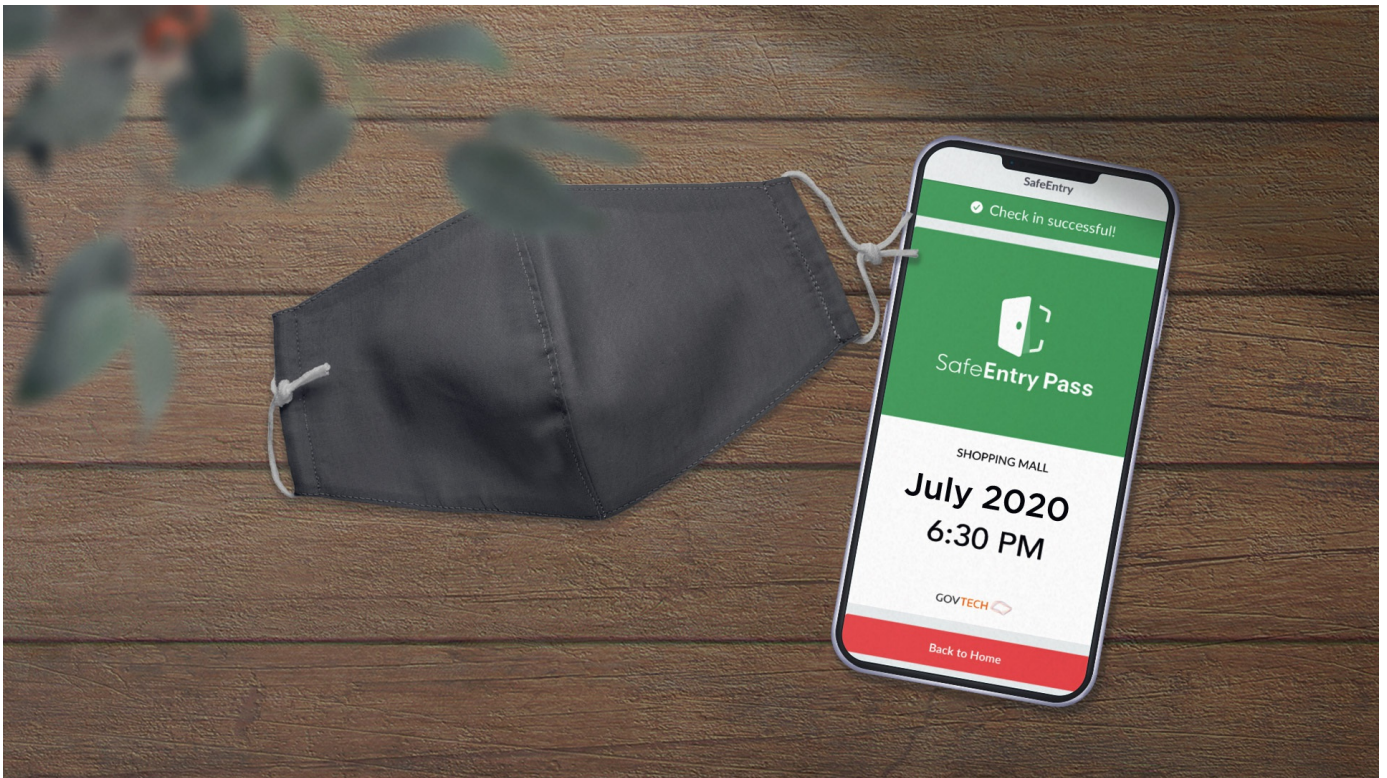
HEALTH

COVID-19

Share :      | 

PART OF A SPECIAL FEATURE

COVID-19 (Coronavirus Disease 2019)



EXPLORE 

RELATED ARTICLES



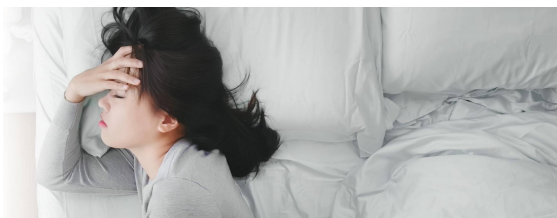
COVID-19: Updates and announcements



COVID-19 Resources



"I had dengue and it was a terrible experience"



What should you do when you have dengue?



Cost of SHN stays, swab tests, and medical expenses when you travel

Is this page useful? [Yes](#) • [No](#)

[Is there anything wrong with this page?](#)

Most Popular

Updates to safe-distancing measures for outdoor exercise classes, malls, and F&B - from 29 Aug onwards

Updates to border measures for low-risk countries/regions from 1 Sep

Cost of SHN stays, swab tests, and medical expenses when you travel

More support for workers and jobs through the Jobs Support Scheme and COVID-19 Support Grant

Phase Two: Easing of restrictions on key life events



[Who We Are](#)

[Contact](#)

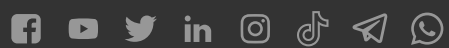
[FAQ](#)

[Privacy Statement](#)

[Terms of Use](#)

[Rate This Website](#)

[Report Vulnerability](#)



This site is best viewed using IE9.039 & above and Chrome.

© 2020 Government of Singapore Last updated on 10 Sep 2020