

Share :      | 

Listen

As of 25 September 2020, 12pm, the Ministry of Health (MOH) has confirmed 11 new cases of COVID-19 infection in Singapore.

Among the cases:

- Imported cases: **2**
  - 1 Work Pass holder, 1 Work Permit holder

Both imported cases are Work Pass/ Permit holders currently employed in Singapore who arrived from India and the Philippines on 13 September. They had been placed on 14-day Stay-Home Notice (SHN) upon arrival in Singapore, and were tested while serving their SHN at dedicated facilities.

- Cases in the community: **0**
  - There are no cases in the community today.

Overall, the number of new cases in the community has remained stable at an average of fewer than 1 case per day in the past 2 weeks. The number of unlinked cases in the community has also remained stable at an average of fewer than 1 case per day in the past 2 weeks.

- Cases residing in dormitories: **9**

Amongst the 9 cases residing in dormitories, 7 had been identified earlier as contacts of previous cases, and had already been quarantined to prevent further transmission. They were tested during quarantine to determine their status.

The remaining 2 cases were detected through surveillance testing, such as the bi-weekly Rostered Routine Testing of workers living in dormitories.

Of the new cases, 91% are imported or linked to known cases/ clusters, while the rest are pending contact tracing.

8 more cases of COVID-19 infection have been discharged from hospitals or community isolation facilities. In all, 57,341 have fully recovered from the infection and have been discharged from hospitals or community care facilities.

Most of the 29 confirmed cases who are still in hospital are stable or improving. None is in the intensive care unit.

268 cases who have mild symptoms, or are clinically well but still test positive for COVID-19 are isolated and cared for at community facilities.

27 have passed away from complications due to COVID-19 infection.

Related link: [List of public places visited by confirmed cases in the community during Infectious Period](#)

For more details, refer to MOH's [press release](#).

## TOPICS

HEALTH

COVID-19

Share:      | 

### PART OF A SPECIAL FEATURE

## COVID-19 (Coronavirus Disease 2019)

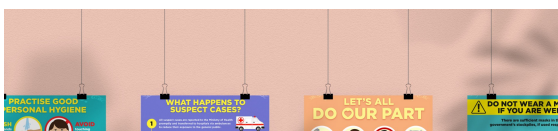


[EXPLORE](#) 

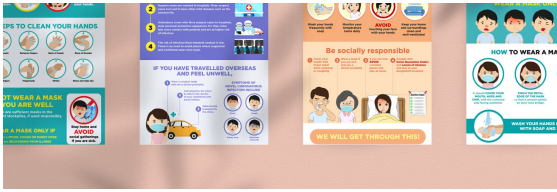
## RELATED ARTICLES



[COVID-19: Updates and announcements](#)



[COVID-19 Resources](#)



“I had dengue and it was a terrible experience”



What should you do when you have dengue?



Cost of SHN stays, swab tests, and medical expenses when you travel

Is this page useful? [Yes](#) • [No](#)

[Is there anything wrong with this page?](#)

## Most Popular

---

Updates to safe-distancing measures for outdoor exercise classes, malls, and F&B - from 29 Aug onwards

---

Updates to border measures for low-risk countries/regions from 1 Sep

---

Cost of SHN stays, swab tests, and medical expenses when you travel

---

More support for workers and jobs through the Jobs Support Scheme and COVID-19 Support Grant

---

## Phase Two: Easing of restrictions on key life events



[Who We Are](#)

[Contact](#)

[FAQ](#)

[Privacy Statement](#)

[Terms of Use](#)

[Rate This Website](#)

[Report Vulnerability](#)



This site is best viewed using IE9.039 & above and Chrome.

© 2020 Government of Singapore Last updated on 25 Sep 2020