

Share :      | 

Listen

As of 5 October 2020, 12pm, the Ministry of Health (MOH) has confirmed and verified 6 new cases of locally transmitted COVID-19 infection.

Overall, the number of new cases in the community has increased from an average of fewer than 1 case per day in the week before, to an average of 1 case in the past week. The number of unlinked cases in the community has remained stable at an average of fewer than 1 case per day in the past 2 weeks.

All new cases are imported or linked to known cases/ clusters.

Among the cases:

- Cases in the community: **1**
 - 1 symptomatic

The case had been identified as a contact of a previously confirmed case who is her household member, and was placed on quarantine on 3 October. She developed symptoms the next day, and was tested and subsequently conveyed to a hospital when her test result came back positive on the same day. She is a student at a private school, and was last in school on 2 October before onset of symptoms.

- Cases residing in dormitories: **5**
 - 5 asymptomatic

All 5 cases residing in dormitories had been identified earlier as contacts of previous cases, and had already been quarantined to prevent further transmission. They were tested during quarantine to determine their status.

- Imported cases: **1**
 - 1 asymptomatic

There is 1 imported case today who is asymptomatic. He had been placed on 14-day SHN upon arrival in Singapore, and was tested while serving SHN at a dedicated facility.

22 more cases of COVID-19 infection have been discharged from hospitals or community isolation facilities. In all, 57,597 have fully recovered from the infection and have been discharged from hospitals or community care facilities.

Most of the 42 confirmed cases who are still in hospital are stable or improving. None is in the intensive care unit.

153 cases who have mild symptoms, or are clinically well but still test positive for COVID-19 are isolated and cared for at community facilities.

27 have passed away from complications due to COVID-19 infection.

Related link: [List of public places visited by confirmed cases in the community during Infectious Period](#)

For more details, refer to MOH's [press release](#).

TOPICS

HEALTH

COVID-19

Share:      | 

PART OF A SPECIAL FEATURE

COVID-19 (Coronavirus Disease 2019)

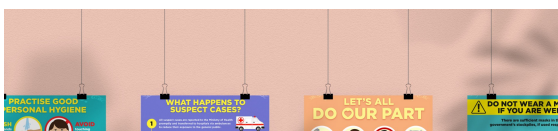


EXPLORE 

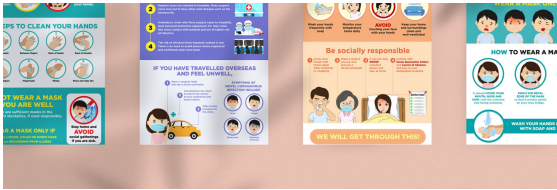
RELATED ARTICLES



COVID-19: Updates and announcements



COVID-19 Resources



“I had dengue and it was a terrible experience”



What should you do when you have dengue?



Cost of SHN stays, swab tests, and medical expenses when you travel

Is this page useful? [Yes](#) • [No](#)

[Is there anything wrong with this page?](#)

Most Popular

Updates to safe-distancing measures for outdoor exercise classes, malls, and F&B - from 29 Aug onwards

Updates to border measures for low-risk countries/regions from 1 Sep

Cost of SHN stays, swab tests, and medical expenses when you travel

More support for workers and jobs through the Jobs Support Scheme and COVID-19 Support Grant

Phase Two: Easing of restrictions on key life events



[Who We Are](#)

[Contact](#)

[FAQ](#)

[Privacy Statement](#)

[Terms of Use](#)

[Rate This Website](#)

[Report Vulnerability](#)



© 2020 Government of Singapore Last updated on 05 Oct 2020