

# COVID-19: Cases in Singapore

An update of the latest confirmed cases in Singapore

Min Read | Published on 22 Oct 2020 | Last updated on 22 Oct 2020



Share :      | 

Listen

As of 22 October 2020, 12pm, the Ministry of Health (MOH) has confirmed and verified that there is 1 new case of locally transmitted COVID-19 infection. The case resides in a dormitory and there are no new cases in the community. There are 7 imported cases, who had all been placed on Stay-Home Notice (SHN) upon arrival in Singapore. All new cases today are asymptomatic, and were detected from our proactive screening and surveillance.

Overall, the number of new cases in the community has decreased from 4 cases in the week before, to 2 in the past week. The number of unlinked cases in the community has increased from none in the week before, to 2 cases in the past week.

Among the cases:

- Cases in the community: **0**
  - There are no cases in the community today.
- Cases residing in dormitories: **1**
  - 1 asymptomatic

There is 1 case residing in a dormitory today who was detected through bi-weekly Rostered Routine Testing of workers living in dormitories.

- Imported cases: **7**
  - 7 asymptomatic

Amongst the 7 imported cases, 1 is a Singaporean and another is a Singapore Permanent Resident who returned from Indonesia and India respectively. Another 2 are Work Pass and Work Permit holders currently employed in Singapore who arrived from the UAE and Myanmar respectively. The remaining cases are Short-Term Visit Pass holders. Two cases are family members of Singapore Permanent Residents, while another case was allowed entry into Singapore as he was already receiving medical care in Singapore and had returned for further treatment. They had all been placed on SHN upon arrival in Singapore and were tested while serving SHN.

8 more cases of COVID-19 infection have been discharged from hospitals or community isolation facilities. In all, 57,829 have fully recovered from the infection and have been discharged from hospitals or community care facilities.

Most of the 45 confirmed cases who are still in hospital are stable or improving. None is in the intensive care unit.

39 cases who have mild symptoms, or are clinically well but still test positive for COVID-19 are isolated and cared for at community facilities.

28 have passed away from complications due to COVID-19 infection.

Related link: [List of public places visited by confirmed cases in the community during Infectious Period](#)

For more details, refer to MOH's [press release](#).

## TOPICS

HEALTH

COVID-19

Share:      | 

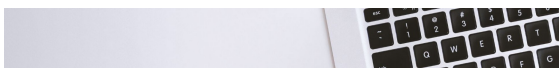
**PART OF A SPECIAL FEATURE**

## COVID-19 (Coronavirus Disease 2019)



[EXPLORE](#) 

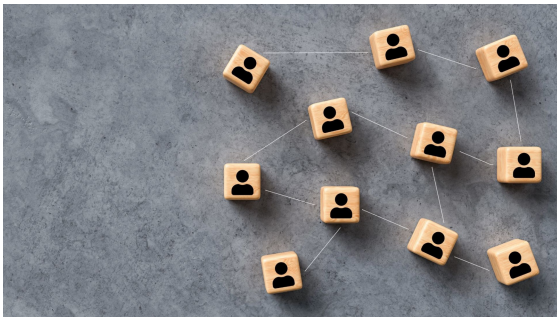
## RELATED ARTICLES



[COVID-19: Updates and announcements](#)



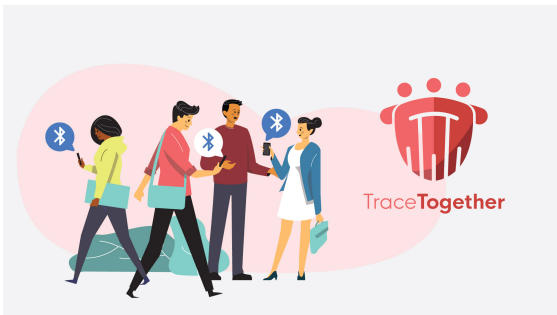
Public Places Visited by Cases in the Community during Infectious Period



COVID-19 Resources



Roadmap to Phase 3



Standing by her patients and an Olympic dream



Is this page useful? [Yes](#) • [No](#)

[Is there anything wrong with this page?](#)

## Most Popular

---

Updates to safe-distancing measures for outdoor exercise classes, malls, and F&B - from 29 Aug onwards

---

Updates to border measures for low-risk countries/regions from 1 Sep

---

Cost of SHN stays, swab tests, and medical expenses when you travel

---

More support for workers and jobs through the Jobs Support Scheme and COVID-19 Support Grant

---

Phase Two: Easing of restrictions on key life events



[Who We Are](#)

[Contact](#)

[FAQ](#)

[Privacy Statement](#)

[Terms of Use](#)

[Rate This Website](#)

[Report Vulnerability](#)



© 2020 Government of Singapore Last updated on 22 Oct 2020