

## COVID-19: Cases in Singapore

An update of the latest confirmed cases in Singapore

Min Read | Published on 25 Oct 2020 | Last updated on 25 Oct 2020



Share:      | 

Listen

As of 25 October 2020, 12pm, the Ministry of Health (MOH) has confirmed and verified 2 new cases of locally transmitted COVID-19 infection. Both reside in dormitories and there are no new cases in the community. In addition, there are 3 imported cases, who had all been placed on Stay-Home Notice (SHN) upon arrival in Singapore. Amongst the new cases today, 4 are asymptomatic, and were detected from our proactive screening and surveillance, while 1 was symptomatic.

Overall, the number of new cases in the community has decreased from 5 cases in the week before, to 2 in the past week. The number of unlinked cases in the community has remained stable at 2 cases a week in the past 2 weeks.

Among the cases:

- Cases in the community: **0**

There are no cases in the community today.

- Cases residing in dormitories: **2**
  - 1 symptomatic, 1 asymptomatic

There are 2 cases residing in dormitories today, of whom 1 was detected from our bi-weekly Rostered Routine Testing of workers living in dormitories, even though he is asymptomatic. The other was tested for COVID-19 when he developed acute respiratory infection (ARI) symptoms.

- Imported cases: **3**

- o 3 asymptomatic

Amongst the 3 imported cases, 1 case is a Singapore Permanent Resident who returned from the UK, and another case is a Dependant's Pass holder who arrived from the UAE. The remaining case is a Short-Term Visit Pass holder who arrived from Indonesia. She was allowed entry into Singapore to visit her child who is a Singapore Permanent Resident. They had all been placed on SHN upon arrival in Singapore and were tested while serving SHN.

14 more cases of COVID-19 infection have been discharged from hospitals or community isolation facilities. In all, 57,858 have fully recovered from the infection and have been discharged from hospitals or community care facilities.

Most of the 51 confirmed cases who are still in hospital are stable or improving. None is in the intensive care unit.

33 cases who have mild symptoms, or are clinically well but still test positive for COVID-19 are isolated and cared for at community facilities.

28 have passed away from complications due to COVID-19 infection.

Related link: [List of public places visited by confirmed cases in the community during Infectious Period](#)

*For more details, refer to MOH's [press release](#).*

## TOPICS

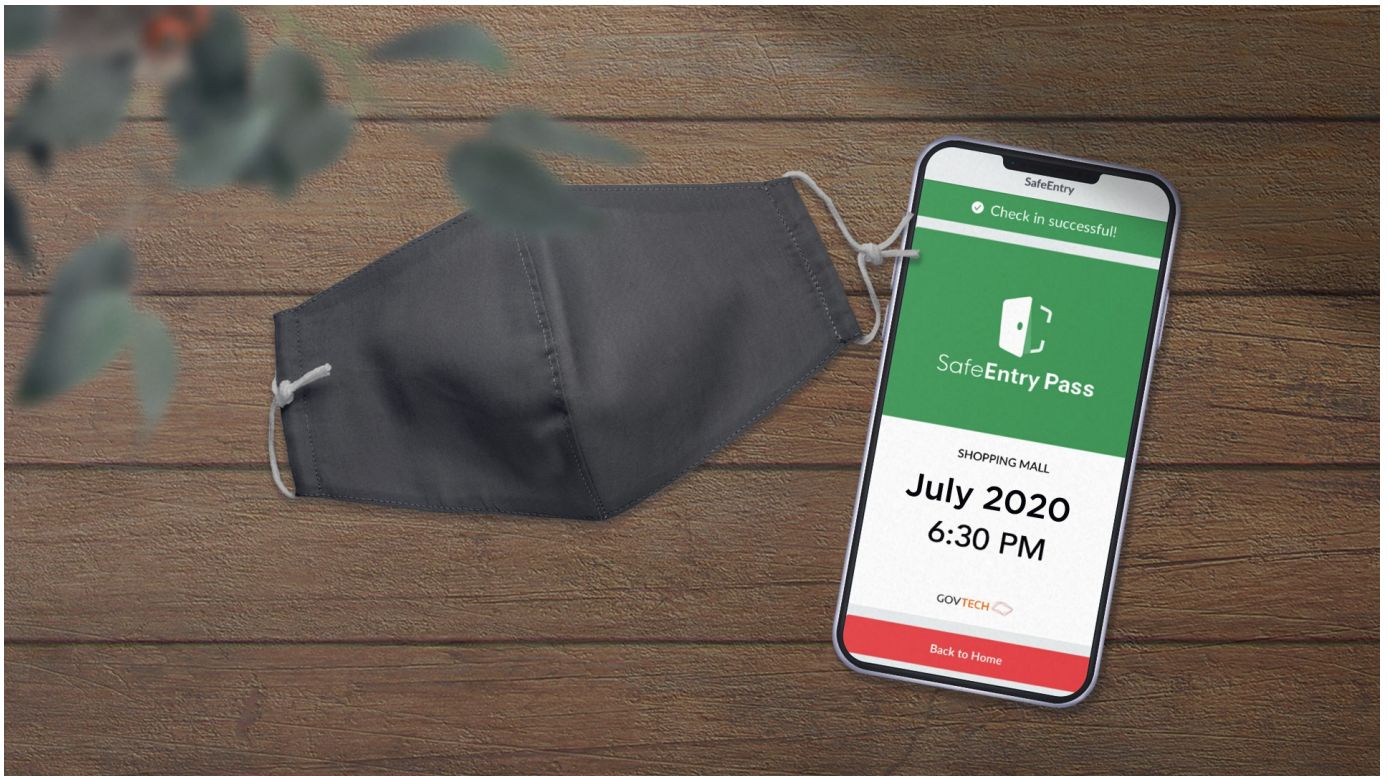
HEALTH

COVID-19

Share: [!\[\]\(6a9b39b98eb945faa14c645ec99e4eaa\_img.jpg\)](#) [!\[\]\(182077db5bac9ff62bf376fe37ffa951\_img.jpg\)](#) [!\[\]\(6ed6a340e0627314752774197e63f07e\_img.jpg\)](#) [!\[\]\(9ff6d055737e0f9bee95f39dc7b63bda\_img.jpg\)](#) [!\[\]\(d6c755287beca994c9f500381644d155\_img.jpg\)](#) | [!\[\]\(394b871ff942a377ca8abbd6b4d14499\_img.jpg\)](#)

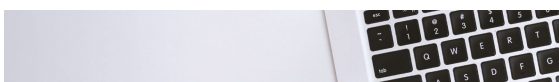
### PART OF A SPECIAL FEATURE

## COVID-19 (Coronavirus Disease 2019)



[EXPLORE](#) 

## RELATED ARTICLES



[COVID-19: Updates and announcements](#)



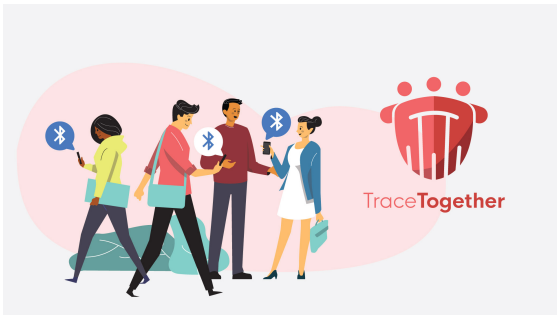
Public Places Visited by Cases in the Community during Infectious Period



COVID-19 Resources



Roadmap to Phase 3



Standing by her patients and an Olympic dream



Is this page useful? [Yes](#) • [No](#)

Is there anything wrong with this page?

## Most Popular

---

Roadmap to Phase 3

---

Updates to safe-distancing measures for outdoor exercise classes, malls, and F&B - from

29 Aug onwards

---

Updates to border measures for low-risk countries/regions from 1 Sep

---

Cost of SHN stays, swab tests, and medical expenses when you travel

---

More support for workers and jobs through the Jobs Support Scheme and COVID-19 Support Grant



[Who We Are](#)

[Contact](#)

[FAQ](#)

[Privacy Statement](#)

[Terms of Use](#)

[Rate This Website](#)

[Report Vulnerability](#)



© 2020 Government of Singapore Last updated on 25 Oct 2020