

COVID-19: Cases in Singapore

An update of the latest confirmed cases in Singapore

Min Read | Published on 27 Oct 2020 | Last updated on 27 Oct 2020



Share :      | 

Listen

As of 27 October 2020, 12pm, the Ministry of Health (MOH) has confirmed and verified 1 new case of locally transmitted COVID-19 infection. The case is in the community, and there are no new cases in the dormitories. In addition, there are 6 imported cases, who had been placed on Stay-Home Notice (SHN) or isolated upon arrival in Singapore. Amongst the new cases today, 3 are asymptomatic, and were detected from our proactive screening and surveillance, while 4 were symptomatic.

Overall, the number of new cases in the community has decreased from 4 cases in the week before, to 3 in the past week. The number of unlinked cases in the community has increased from 2 cases in the week before, to 3 in the past week.

Among the cases:

- Cases in the community: **1**

There is 1 case in the community today who is currently unlinked. The case is a Short-Term Visit Pass holder who arrived from Vietnam under an Air Travel Pass. She is a caregiver to her sibling who was already receiving medical treatment in Singapore for an unrelated condition. She underwent a COVID-19 test upon arrival in Singapore on 10 October and her result came back negative. She subsequently developed acute respiratory infection (ARI) symptoms on 23 October and was tested for COVID-19 under our enhanced community testing to test all individuals aged 13 and above who are diagnosed with ARI at first presentation to a doctor.

- Cases residing in dormitories: **0**

- There are no cases residing in dormitories today.
- Imported cases: 6
 - 3 symptomatic, 3 asymptomatic

Amongst the 6 imported cases, 4 are currently employed in Singapore. Of these, 2 cases are Work Pass holders who arrived from Japan and France, and 2 other cases are Work Permit holders who arrived from Indonesia. Another case is a Dependant's Pass holder who arrived from the UK. The remaining case is a Short-Term Visit Pass holder who was allowed entry into Singapore to visit her child who is a Singapore Permanent Resident. They had all been placed on SHN or isolated upon arrival in Singapore and were tested while serving SHN.

4 more cases of COVID-19 infection have been discharged from hospitals or community isolation facilities. In all, 57,883 have fully recovered from the infection and have been discharged from hospitals or community care facilities.

Most of the 43 confirmed cases who are still in hospital are stable or improving. None is in the intensive care unit.

26 cases who have mild symptoms, or are clinically well but still test positive for COVID-19 are isolated and cared for at community facilities.

28 have passed away from complications due to COVID-19 infection.

Related link: [List of public places visited by confirmed cases in the community during Infectious Period](#)

For more details, refer to MOH's [press release](#).

TOPICS

HEALTH

COVID-19

Share: [f](#) [t](#) [in](#) [w](#) [e](#) | [p](#)

PART OF A SPECIAL FEATURE

COVID-19 (Coronavirus Disease 2019)



EXPLORE [➔](#)

RELATED ARTICLES



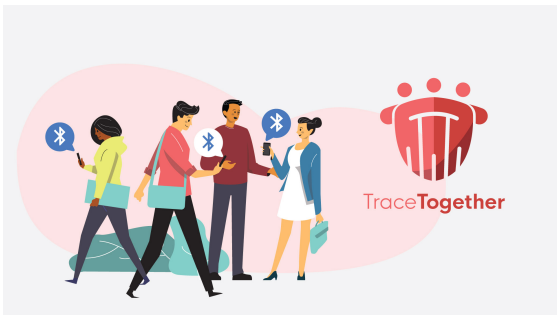
[COVID-19: Updates and announcements](#)



[Public Places Visited by Cases in the Community during Infectious Period](#)



[COVID-19 Resources](#)



[Roadmap to Phase 3](#)



[Standing by her patients and an Olympic dream](#)

Is this page useful? [Yes](#) • [No](#)

[Is there anything wrong with this page?](#)

Most Popular

[Roadmap to Phase 3](#)

Updates to safe-distancing measures for outdoor exercise classes, malls, and F&B - from 29 Aug onwards

Updates to border measures for low-risk countries/regions from 1 Sep

Cost of SHN stays, swab tests, and medical expenses when you travel

More support for workers and jobs through the Jobs Support Scheme and COVID-19 Support Grant



[Who We Are](#)

[Contact](#)

[FAQ](#)

[Privacy Statement](#)

[Terms of Use](#)

[Rate This Website](#)

[Report Vulnerability](#)



© 2020 Government of Singapore Last updated on 27 Oct 2020