

## COVID-19: Cases in Singapore

An update of the latest confirmed cases in Singapore

Min Read | Published on 28 Oct 2020 | Last updated on 28 Oct 2020



Share:      | 

Listen

As of 28 October 2020, 12pm, the Ministry of Health (MOH) has confirmed and verified that there are no new cases of locally transmitted COVID-19 infection. There are 7 imported cases, who had all been placed on Stay-Home Notice upon arrival in Singapore. All new cases today are asymptomatic, and were detected from proactive screening and surveillance.

Overall, the number of new, as well as unlinked, cases in the community has increased from 2 cases in the week before, to 3 in the past week.

Among the cases:

- Cases in the community: **0**
  - There are no cases in the community today.
- Cases residing in dormitories: **0**
  - There are no cases residing in dormitories today.
- Imported cases: **7**
  - 7 asymptomatic

Amongst the 7 imported cases, 1 is a Singapore Permanent Resident who returned from Belgium. The rest are currently employed in Singapore. Of these, 1 is a Work Pass holder who arrived from Switzerland, and 5 are Work Permit holders who arrived from Myanmar and the Philippines. They had all been placed on SHN upon arrival in Singapore and were

tested while serving SHN.

7 more cases of COVID-19 infection have been discharged from hospitals or community isolation facilities. In all, 57,890 have fully recovered from the infection and have been discharged from hospitals or community care facilities.

Most of the 40 confirmed cases who are still in hospital are stable or improving. None is in the intensive care unit.

29 cases who have mild symptoms, or are clinically well but still test positive for COVID-19 are isolated and cared for at community facilities.

28 have passed away from complications due to COVID-19 infection.

Related link: [List of public places visited by confirmed cases in the community during Infectious Period](#)

*For more details, refer to MOH's [press release](#).*

## TOPICS

HEALTH

COVID-19

Share: [!\[\]\(c50c8b7b2cc2cf9ff925edec0ee94c0d\_img.jpg\)](#) [!\[\]\(8bed43dc33ecdde61e2f76c8f5517125\_img.jpg\)](#) [!\[\]\(047f882704cdc566325d0a83645d692e\_img.jpg\)](#) [!\[\]\(4f39bb1f5d124de68e2d5e309adc07d7\_img.jpg\)](#) [!\[\]\(9956dc689101f4d2cd02413c5e727ccb\_img.jpg\)](#) | [!\[\]\(f293f70caa7f2c4cb2f08341cb68c804\_img.jpg\)](#)

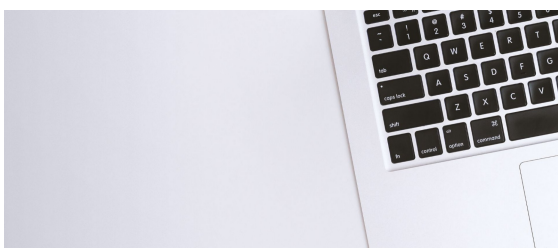
**PART OF A SPECIAL FEATURE**

## COVID-19 (Coronavirus Disease 2019)



**EXPLORE** 

## RELATED ARTICLES



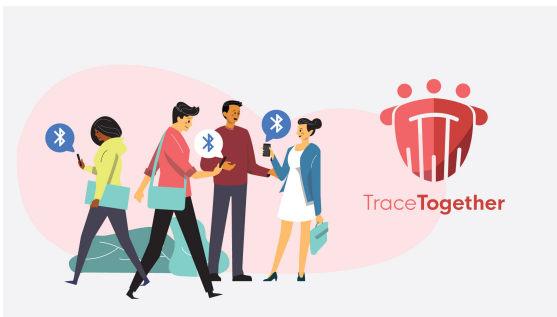
**COVID-19: Updates and announcements**



Public Places Visited by Cases in the Community during Infectious Period



COVID-19 Resources



Roadmap to Phase 3



Standing by her patients and an Olympic dream

Is this page useful? [Yes](#) · [No](#)

[Is there anything wrong with this page?](#)

## Most Popular

---

Roadmap to Phase 3

---

Updates to safe-distancing measures for outdoor exercise classes, malls, and F&B - from 29 Aug onwards

---

Updates to border measures for low-risk countries/regions from 1 Sep

---

Cost of SHN stays, swab tests, and medical expenses when you travel

---

More support for workers and jobs through the Jobs Support Scheme and COVID-19 Support Grant



[Who We Are](#)

[Contact](#)

[FAQ](#)

[Privacy Statement](#)

[Terms of Use](#)

[Rate This Website](#)

[Report Vulnerability](#)



© 2020 Government of Singapore Last updated on 28 Oct 2020