

COVID-19: Cases in Singapore

An update of the latest confirmed cases in Singapore

Min Read | Published on 30 Oct 2020 | Last updated on 30 Oct 2020



Share :      | 

Listen

As of 30 October 2020, 12pm, the Ministry of Health (MOH) has confirmed and verified 2 new cases of locally transmitted COVID-19 infection. Of these, 1 is in the community, and 1 resides in a dormitory. In addition, there are 7 imported cases, who had all been placed on Stay-Home Notice (SHN) upon arrival in Singapore. All new cases today are asymptomatic, and were detected from proactive screening and surveillance.

Overall, the number of new cases in the community has increased from 2 cases in the week before, to 4 in the past week. The number of unlinked cases in the community has also increased from 1 case in the week before, to 4 in the past week.

Among the cases:

- Cases in the community: **1**
 - 1 asymptomatic

There is 1 case in the community today who is currently unlinked. The case is asymptomatic and was detected when he underwent a pre-departure COVID-19 test on 27 October prior to a planned trip to India which came back positive. He had been in India in July and August 2020, and had served 14-day SHN at a dedicated facility when he returned to Singapore on 28 August. He was tested negative for COVID-19 while serving SHN. His serological test taken on 29 October is positive, and epidemiological investigations are ongoing to determine if this could be a past infection.

- Cases residing in dormitories: **1**
 - 1 asymptomatic

There is 1 case residing in a dormitory today. He had been identified earlier as a contact of previous cases, and had already been quarantined to prevent further transmission. He was tested during quarantine to determine his status.

- Imported cases: **7**
 - 7 asymptomatic

Amongst the 7 imported cases, 1 is a Singapore Permanent Resident who returned from Italy, and 1 is a Long-Term Visit Pass holder who arrived from Bangladesh. Another 4 are currently employed in Singapore. Of these, 3 are Work Pass holders who arrived from US, Belgium and Portugal, and 1 is a Work Permit holder who arrived from Bangladesh. The remaining case is a Special Pass holder who arrived from the Philippines to board a ship docked here as a crew member. They had all been placed on SHN upon arrival in Singapore and were tested while serving SHN.

10 more cases of COVID-19 infection have been discharged from hospitals or community isolation facilities. In all, 57,909 have fully recovered from the infection and have been discharged from hospitals or community care facilities.

Most of the 42 confirmed cases who are still in hospital are stable or improving. None is in the intensive care unit.

24 cases who have mild symptoms, or are clinically well but still test positive for COVID-19 are isolated and cared for at community facilities.

28 have passed away from complications due to COVID-19 infection.

Related link: [List of public places visited by confirmed cases in the community during Infectious Period](#)

For more details, refer to MOH's [press release](#).

TOPICS

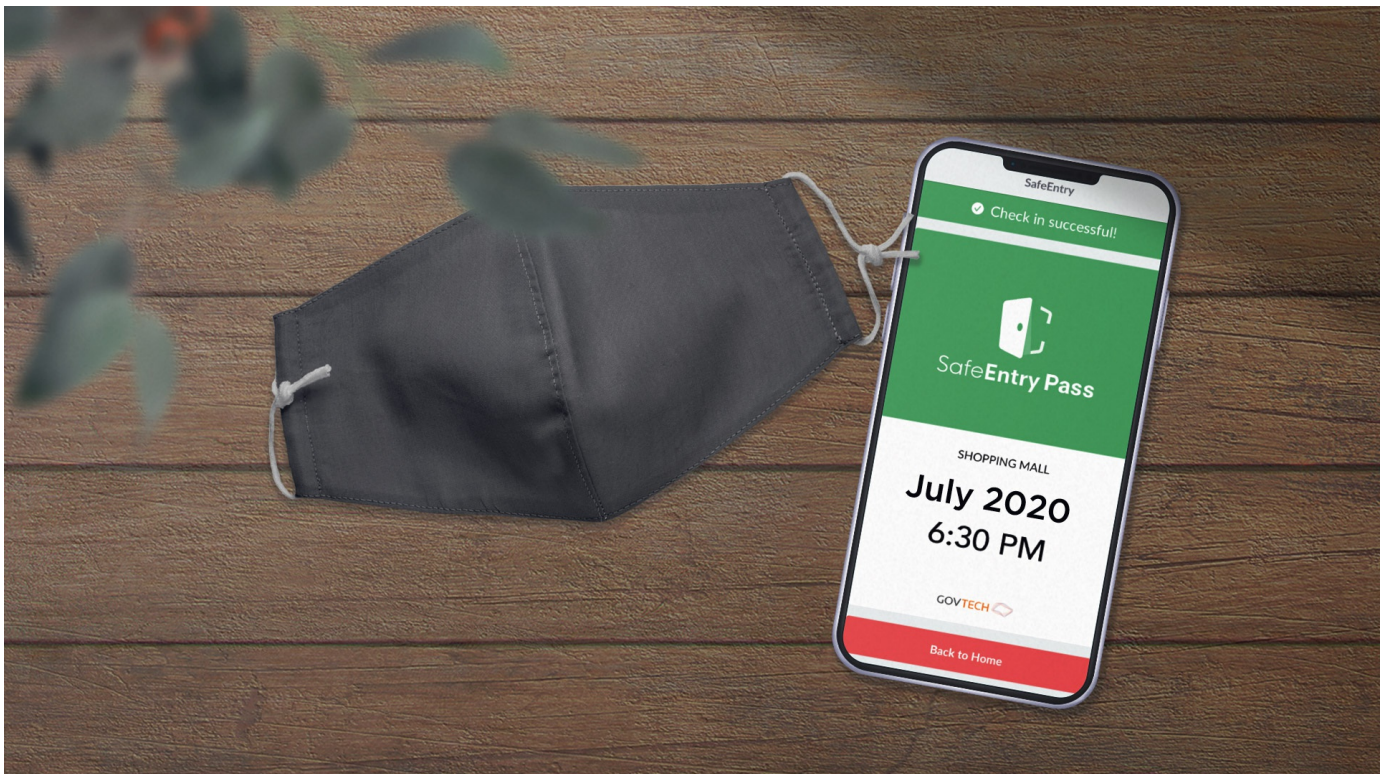
HEALTH

COVID-19

Share:      | 

PART OF A SPECIAL FEATURE

COVID-19 (Coronavirus Disease 2019)



EXPLORE 

RELATED ARTICLES



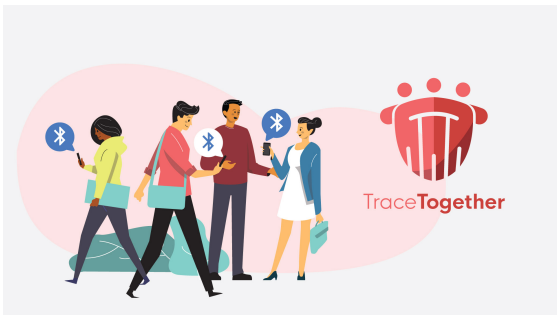
[COVID-19: Updates and announcements](#)



[Public Places Visited by Cases in the Community during Infectious Period](#)



[COVID-19 Resources](#)



[Roadmap to Phase 3](#)



[Standing by her patients and an Olympic dream](#)

Is this page useful? [Yes](#) • [No](#)

[Is there anything wrong with this page?](#)

Most Popular

[Roadmap to Phase 3](#)

Updates to safe-distancing measures for outdoor exercise classes, malls, and F&B - from 29 Aug onwards

Updates to border measures for low-risk countries/regions from 1 Sep

Cost of SHN stays, swab tests, and medical expenses when you travel

More support for workers and jobs through the Jobs Support Scheme and COVID-19 Support Grant



[Who We Are](#)

[Contact](#)

[FAQ](#)

[Privacy Statement](#)

[Terms of Use](#)

[Rate This Website](#)

[Report Vulnerability](#)



© 2020 Government of Singapore Last updated on 30 Oct 2020