

COVID-19: Cases in Singapore

An update of the latest confirmed cases in Singapore

Min Read | Published on 02 Nov 2020 | Last updated on 02 Nov 2020



Share :      | 

Listen

As of 2 November 2020, 12pm, the Ministry of Health (MOH) has confirmed and verified no new cases of locally transmitted COVID-19 infection. There is 1 imported case, who had been placed on Stay-Home Notice upon arrival in Singapore. The case is asymptomatic, and was detected from our proactive screening and surveillance.

Overall, the number of new cases in the community has remained low, with a total of 2 cases in the past week. Both cases are currently unlinked.

Among the cases:

- Cases in the community: **0**
 - There are no cases in the community today.
- Cases residing in dormitories: **0**
 - There are no cases residing in dormitories today.
- Imported cases: **1**
 - 1 asymptomatic

There is 1 imported case today. The case is a Work Pass holder currently employed in Singapore who arrived from the Philippines. She had been placed on SHN upon arrival in Singapore and was tested while serving SHN.

No new cases of COVID-19 infection have been discharged from hospitals or community isolation facilities. In all, 57,924 have

fully recovered from the infection and have been discharged from hospitals or community care facilities.

Most of the 46 confirmed cases who are still in hospital are stable or improving. None is in the intensive care unit.

22 cases who have mild symptoms, or are clinically well but still test positive for COVID-19 are isolated and cared for at community facilities.

28 have passed away from complications due to COVID-19 infection.

Related link: [List of public places visited by confirmed cases in the community during Infectious Period](#)

For more details, refer to MOH's [press release](#).

TOPICS

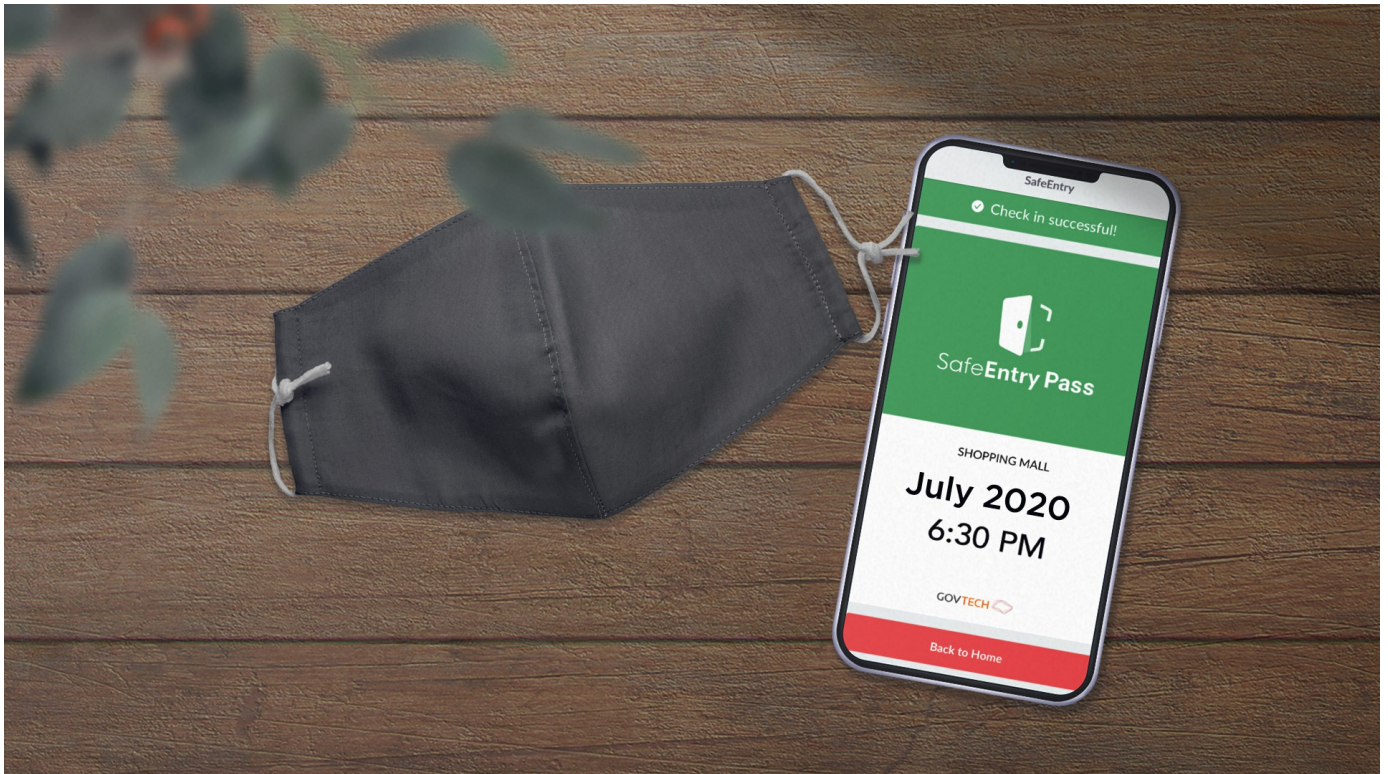
HEALTH

COVID-19

Share: [!\[\]\(6059a5aa8b4ca7bb793408023d6c6e42_img.jpg\)](#) [!\[\]\(d293b9aef7d8767760396289fbc64e8a_img.jpg\)](#) [!\[\]\(17b8ec23ac3db44f57c5269d03d8ed28_img.jpg\)](#) [!\[\]\(894ebf17641fbcfb1e2f206cb412a794_img.jpg\)](#) [!\[\]\(c8c5760f99815eebc8f2c3353b7a1ef3_img.jpg\)](#) | [!\[\]\(66832f1915f4d121c8c421d23456ed2f_img.jpg\)](#)

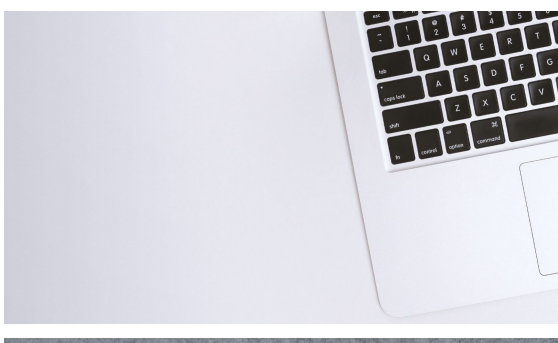
PART OF A SPECIAL FEATURE

COVID-19 (Coronavirus Disease 2019)

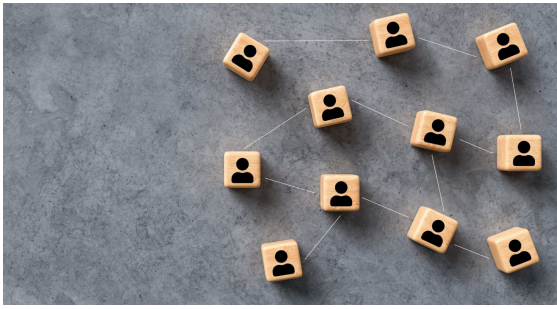


[EXPLORE !\[\]\(e3275251d0893157c3584e20c81dc3ba_img.jpg\)](#)

RELATED ARTICLES



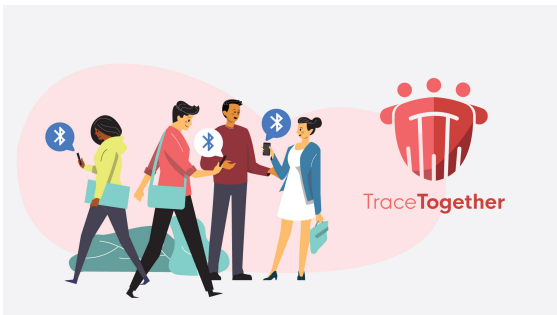
[COVID-19: Updates and announcements](#)



Public Places Visited by Cases in the Community during Infectious Period



COVID-19 Resources



Roadmap to Phase 3



Standing by her patients and an Olympic dream

Is this page useful? [Yes](#) • [No](#)

[Is there anything wrong with this page?](#)

Most Popular

Roadmap to Phase 3

Updates to safe-distancing measures for outdoor exercise classes, malls, and F&B - from 29 Aug onwards

Updates to border measures for low-risk countries/regions from 1 Sep

Cost of SHN stays, swab tests, and medical expenses when you travel

More support for workers and jobs through the Jobs Support Scheme and COVID-19 Support Grant



[Who We Are](#)

[Contact](#)

[FAQ](#)

[Privacy Statement](#)

[Terms of Use](#)

[Rate This Website](#)

[Report Vulnerability](#)

