

COVID-19: Cases in Singapore

An update of the latest confirmed cases in Singapore

Min Read | Published on 10 Nov 2020 | Last updated on 10 Nov 2020



Share:      | 

Listen

As of 10 November 2020, 12pm, the Ministry of Health (MOH) has confirmed and verified 2 new cases of locally transmitted COVID-19 infection. Of these, 1 is in the community, and 1 resides in a dormitory. In addition, there are 7 imported cases, who had already been placed on Stay-Home Notice (SHN) or isolated upon arrival. Amongst the new cases today, 7 are asymptomatic, and were detected from our proactive screening and surveillance, while 2 were symptomatic.

Overall, the number of new cases in the community has remained low, with a total of 2 cases in the past week. Both cases are currently unlinked.

Among the cases:

- Cases in the community: **1 (1 symptomatic)**

There is 1 case in the community today who is currently unlinked. The case was last at work as a cleaner on 2 November. He developed symptoms a day later, and sought medical treatment at a General Practitioner clinic, where he was tested for COVID-19 under enhanced community testing to test all individuals aged 13 and above who are diagnosed with ARI at first presentation to a doctor.

- Cases residing in dormitories: **1 (1 asymptomatic)**

There is 1 case residing in a dormitory today. He was detected through the bi-weekly Rostered Routine Testing of workers living in dormitories.



Public Places Visited by Cases in the Community during Infectious Period



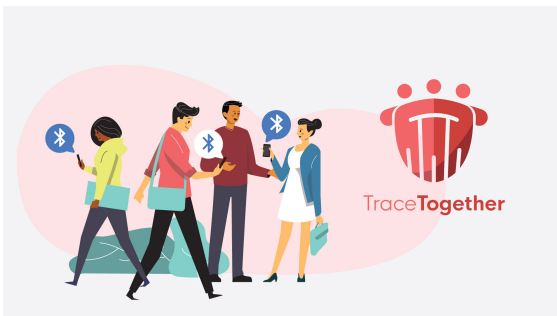
Safeguarding Lives and Livelihoods



COVID-19 Resources



Roadmap to Phase 3



Is this page useful? [Yes](#) • [No](#)

Is there anything wrong with this page?

Most Popular

Roadmap to Phase 3

Updates to safe-distancing measures for outdoor exercise classes, malls, and F&B - from

29 Aug onwards

Updates to border measures for low-risk countries/regions from 1 Sep

Cost of SHN stays, swab tests, and medical expenses when you travel

More support for workers and jobs through the Jobs Support Scheme and COVID-19 Support Grant



[Who We Are](#)

[Contact](#)

[FAQ](#)

[Privacy Statement](#)

[Terms of Use](#)

[Rate This Website](#)

[Report Vulnerability](#)



© 2020 Government of Singapore Last updated on 10 Nov 2020