

COVID-19: Cases in Singapore

An update of the latest confirmed cases in Singapore

Min Read | Published on 29 Nov 2020 | Last updated on 28 Nov 2020



Share :      | 

Listen

As of 28 November 2020, 12pm, the Ministry of Health (MOH) has confirmed and verified that there is 1 new case of locally transmitted COVID-19 infection. The case is in the community, and there are no new cases in the dormitories. There are 5 imported cases, who had already been placed on Stay-Home Notice (SHN) upon arrival in Singapore. All new cases today are asymptomatic, and were detected from proactive screening and surveillance.

Overall, the number of new cases in the community has remained low, with a total of 2 cases in the past week. Both cases are currently unlinked. Among the cases:

- Cases in the community: **1 (1 asymptomatic)**

There is 1 case in the community today who is currently unlinked. The case is a Singaporean who is a stallholder selling mutton at Tekka Market. She is asymptomatic, and was detected from our community surveillance testing of stallholders in and around Tekka Centre on 26 November.

She was conveyed to the National Centre for Infectious Diseases the next day when her test result came back positive. Her serological test result is also positive, which indicates likely past infection.

She works with a co-worker at her stall at Tekka Market, and stays at Yishun Street 22 with her husband, who has been working at Mustafa Centre for the past few years. She regularly visits her children who stay at Bishan Street 13 and Tampines Street 86.

Epidemiological investigations are in progress. In the meantime, all her identified close contacts, including her family members and co-worker, have been isolated and placed on quarantine and will be tested at the start and end of their quarantine period so that we can detect asymptomatic cases. Serological tests will also be conducted on her household and family contacts to determine if she could have been infected by them.

- Cases residing in dormitories: **0**

There are no cases residing in dormitories today.

- Imported cases: **5 (5 asymptomatic)**

Amongst the 5 imported cases, 4 are currently employed in Singapore. Of these, 2 are Work Pass holders who arrived from Saudi Arabia and the UAE, and 2 are Work Permit holders who arrived from Malaysia and Indonesia. The remaining case is a Dependant's Pass holder who arrived from Saudi Arabia. They had all already been placed on SHN upon arrival in Singapore and were tested while serving SHN.

8 more cases of COVID-19 infection have been discharged from hospitals or community isolation facilities. In all, 58,119 have fully recovered from the infection and have been discharged from hospitals or community care facilities.

Most of the 32 confirmed cases who are still in hospital are stable or improving. None is in critical condition in the intensive care unit.

25 cases who have mild symptoms, or are clinically well but still test positive for COVID-19 are isolated and cared for at community facilities.

A 68 year-old male Singaporean, has passed away from complications due to COVID-19 infection on 27 November 2020. He had travelled to Indonesia on 10 March for work, and returned to Singapore on 17 November after experiencing shortness of breath since 11 November, and had been admitted to a hospital upon arrival in Singapore. He was confirmed to have COVID-19 infection on 18 November, and had a past history of hypertension and heart disease. The cause of death as determined by the pathologist is ischaemic heart disease with COVID-19. The National University Hospital has reached out to his family and is extending assistance to them.

29 have passed away from complications due to COVID-19 infection.

Related link: [List of public places visited by confirmed cases in the community during Infectious Period](#)

For more details, refer to MOH's [press release](#).

TOPICS

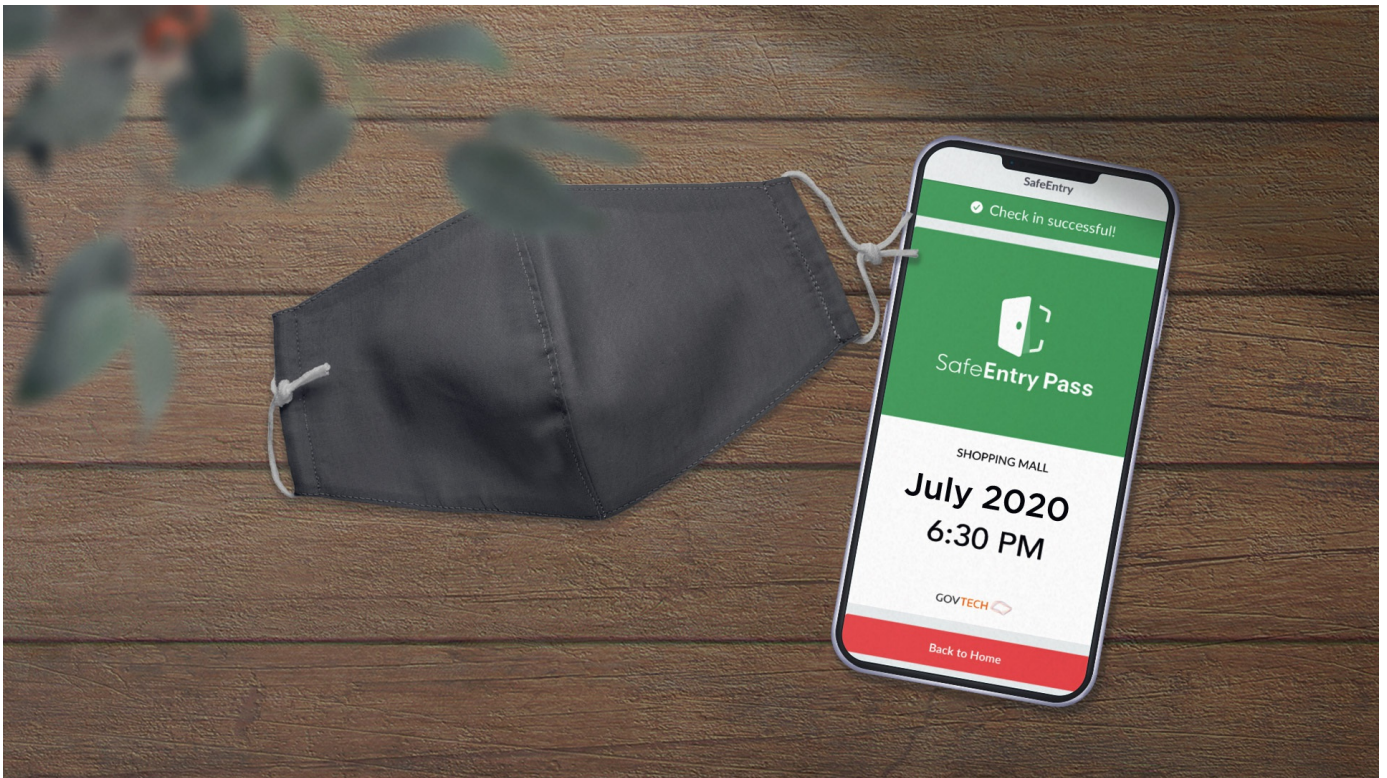
HEALTH

COVID-19

Share:      | 

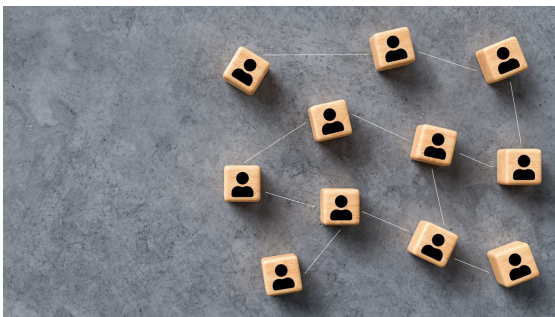
PART OF A SPECIAL FEATURE

COVID-19 (Coronavirus Disease 2019)



EXPLORE 

RELATED ARTICLES



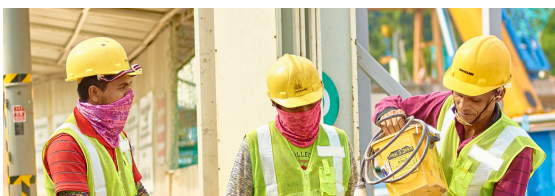
Public Places Visited by Cases in the Community during Infectious Period



COVID-19: Updates and announcements



COVID-19 Resources



COVID-19: Advisories for Various Sectors



Safeguarding Lives and Livelihoods

Is this page useful? [Yes](#) · [No](#)

[Is there anything wrong with this page?](#)

Most Popular

[Roadmap to Phase 3](#)

[Safeguarding Lives and Livelihoods](#)

[Updates to border measures for travellers entering Singapore](#)

[Increase of wedding and cinema caps, updated guidelines on returning back to work](#)

[5 Government initiatives you may benefit from this year-end](#)



[Who We Are](#)

[Contact](#)

[FAQ](#)

[Privacy Statement](#)

[Terms of Use](#)

[Rate This Website](#)

[Report Vulnerability](#)



© 2020 Government of Singapore Last updated on 28 Nov 2020