

COVID-19: Cases in Singapore

An update of the latest confirmed cases in Singapore

Min Read | Published on 01 Dec 2020 | Last updated on 01 Dec 2020



Share:      | 

Listen

As of 1 December 2020, 12pm, the Ministry of Health (MOH) has confirmed and verified that there are 2 new cases of locally transmitted COVID-19 infection. Of these, 1 is in the community, and 1 resides in a dormitory. There are 8 imported cases, who had already been placed on Stay-Home Notice (SHN) or isolated upon arrival in Singapore. Amongst the new cases today, 9 are asymptomatic, and were detected from our proactive screening and surveillance, while 1 was symptomatic.

Overall, the number of new cases in the community has remained low, with a total of 5 cases in the past week who are currently unlinked. Amongst the cases:

- Cases in the community: **1 (1 asymptomatic)**

There is 1 case in the community today who is currently unlinked. She is a Singaporean who works as a cleaner at the transit area at Changi Airport Terminal 3. She is asymptomatic, and was detected through the bi-weekly Rostered Routine Testing (RRT) of workers at the frontlines of COVID-19 operations.

She was conveyed to the hospital when her test came back positive for COVID-19 infection. Her serological test result is negative, which indicates a likely current infection.

She stays at Yishun Ring Road with her husband who is currently unemployed. At work, she dons personal protective equipment, including a face mask, face shield, gloves and gown. Her earlier swabs done as part of RRT were all negative.

Epidemiological investigations are in progress. In the meantime, all the identified close contacts of the case, including

her family members and co-workers, have been isolated and placed on quarantine, and will be tested at the start and end of their quarantine period so that we can detect asymptomatic cases. We will also conduct serological tests for the close contacts to determine if the cases could have been infected by them.

- Cases residing in dormitories: **1 (1 asymptomatic)**

There is 1 case residing in a dormitory today. He is asymptomatic, and was detected through proactive surveillance. He was conveyed to the hospital when his swab result came back positive for COVID-19 infection, and all his close contacts at the dormitory and his workplace have been isolated and placed on quarantine.

- Imported cases: **8 (1 symptomatic, 7 asymptomatic)**

Amongst the 8 imported cases, 6 are currently employed in Singapore. Of these, 1 is a Work Pass holder who arrived from Japan and 5 are Work Permit holders who arrived from Indonesia and Myanmar. Another case is a Long-Term Visit Pass holder who arrived from Russia. They had already been placed on SHN upon arrival in Singapore and were tested while serving SHN.

The remaining case is a Special Pass holder who entered Singapore from Indonesia, and was arrested by the Singapore Police Force's Police Coast Guard for his suspected involvement in a prior case. He was tested for COVID-19 infection, and isolated until he was conveyed to the hospital when his result came back positive.

5 more cases of COVID-19 infection have been discharged from hospitals or community isolation facilities. In all, 58,139 have fully recovered from the infection and have been discharged from hospitals or community care facilities.

Most of the 29 confirmed cases who are still in hospital are stable or improving. None is in critical condition in the intensive care unit.

31 cases who have mild symptoms, or are clinically well but still test positive for COVID-19 are isolated and cared for at community facilities.

29 have passed away from complications due to COVID-19 infection.

Related link: [List of public places visited by confirmed cases in the community during Infectious Period](#)

For more details, refer to MOH's [press release](#).

TOPICS

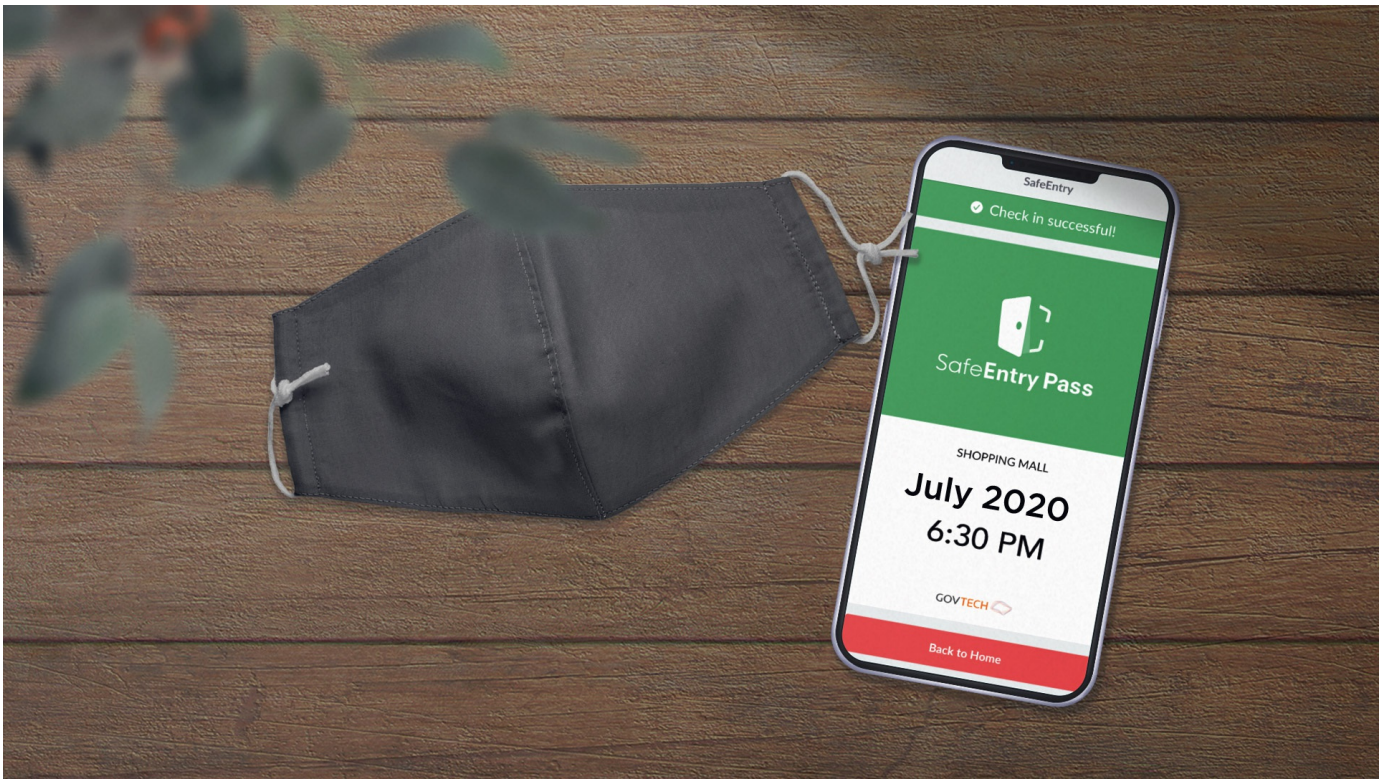
HEALTH

COVID-19

Share :      | 

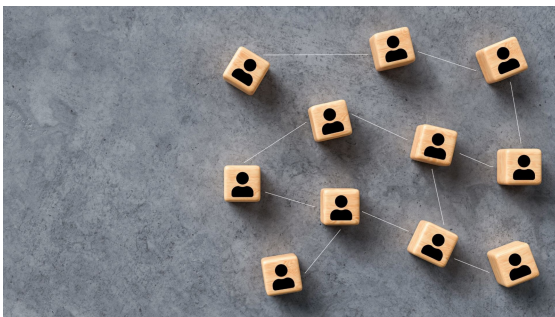
PART OF A SPECIAL FEATURE

COVID-19 (Coronavirus Disease 2019)



EXPLORE 

RELATED ARTICLES



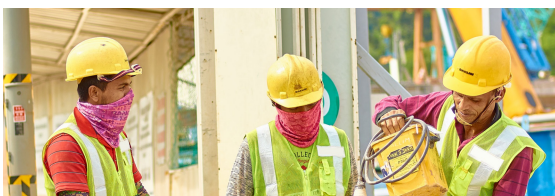
Public Places Visited by Cases in the Community during Infectious Period



COVID-19: Updates and announcements



COVID-19 Resources



COVID-19: Advisories for Various Sectors



Safeguarding Lives and Livelihoods

Is this page useful? [Yes](#) · [No](#)

[Is there anything wrong with this page?](#)

Most Popular

Roadmap to Phase 3

Safeguarding Lives and Livelihoods

Updates to border measures for travellers entering Singapore

Increase of wedding and cinema caps, updated guidelines on returning back to work

5 Government initiatives you may benefit from this year-end



[Who We Are](#)

[Contact](#)

[FAQ](#)

[Privacy Statement](#)

[Terms of Use](#)

[Rate This Website](#)

[Report Vulnerability](#)



© 2020 Government of Singapore Last updated on 01 Dec 2020