

## COVID-19: Cases in Singapore

An update of the latest confirmed cases in Singapore

Min Read | Published on 05 Dec 2020 | Last updated on 05 Dec 2020



Share :      | 

Listen

As of 5 December 2020, 12pm, the Ministry of Health (MOH) has confirmed and verified that there is 1 new case of locally transmitted COVID-19 infection. The case is in the community, and there are no new cases in the dormitories. There are 12 imported cases, of whom 11 who had already been placed on Stay-Home Notice (SHN) or isolated upon arrival in Singapore. Amongst the new cases today, 10 are asymptomatic, and were detected from proactive screening and surveillance, while 3 were symptomatic.

Overall, the number of new cases in the community has remained low, with a total of 4 cases in the past week, of whom 3 are currently unlinked.

- Cases in the community: **1 (1 asymptomatic)**

There is 1 case in the community today. Case 58461 is a Filipino sea crew who arrived from the Philippines on the Normand Australis, which docked at Tuas Port on 18 November. He had earlier been identified as a close contact of Case 58357, and was already placed on quarantine at a government quarantine facility since 22 November. Prior to that, he had not disembarked from the ship.

Before boarding the ship, Case 58461 had undergone a COVID-19 pre-departure test on 2 November which came back negative. Upon the ship's arrival in Singapore, all 18 crew members had been swabbed on 19 November, and all of them tested negative except for Case 58357. As a precautionary measure, the crew members were placed on quarantine, and Case 58461 was moved to a government quarantine facility to serve his quarantine. He is asymptomatic, and was swabbed during quarantine to verify his status. His serological test has come back positive.

- Cases residing in dormitories: **0**

There are no cases residing in dormitories today.

- Imported cases: **12 (3 symptomatic, 9 asymptomatic)**

Amongst the 12 imported cases, 2 are Singaporeans who returned from the US and Indonesia, and 4 are Singapore Permanent Residents who returned from the US, India and Indonesia. Another 4 cases are Work Permit holders currently employed in Singapore who arrived from Indonesia and the Philippines. The remaining cases are a Dependant's Pass holder who arrived from Nepal and a Short-Term Visit Pass holder who arrived from Indonesia to visit her relatives who are Singaporeans.

Case 58465 is a Singaporean who had travelled to Indonesia under the Business Travel Pass. He had undergone a COVID-19 Polymerase Chain Reaction (PCR) test upon return to Singapore on 28 November, and self-isolated while waiting for his test result. His test came back negative but he developed symptoms on 2 December, and was tested for COVID-19 when he sought medical treatment at a General Practitioner clinic. He was confirmed to have COVID-19 infection on 4 December, and is currently isolated at the National Centre for Infectious Diseases. Prior to hospitalisation, he had gone to work at ASL Shipyard Pte Ltd (19 Pandan Road), but had not interacted with his colleagues. His serological test has come back negative, which indicates likely current infection. All his identified close contacts have been isolated and placed on quarantine.

All the other 11 imported cases had already been placed on SHN or isolated upon arrival in Singapore and were tested while serving SHN or during isolation.

6 more cases of COVID-19 infection have been discharged from hospitals or community isolation facilities. In all, 58,158 have fully recovered from the infection and have been discharged from hospitals or community care facilities.

Most of the 26 confirmed cases who are still in hospital are stable or improving. None is in critical condition in the intensive care unit.

42 cases who have mild symptoms, or are clinically well but still test positive for COVID-19 are isolated and cared for at community facilities.

29 have passed away from complications due to COVID-19 infection.

Related link: [List of public places visited by confirmed cases in the community during Infectious Period](#)

For more details, refer to MOH's [press release](#).

---

## TOPICS

HEALTH

COVID-19

---

Share :      | 

**PART OF A SPECIAL FEATURE**

**COVID-19 (Coronavirus Disease 2019)**



[EXPLORE !\[\]\(1d3a1175dd4902218e694b9c098adb83\_img.jpg\)](#)

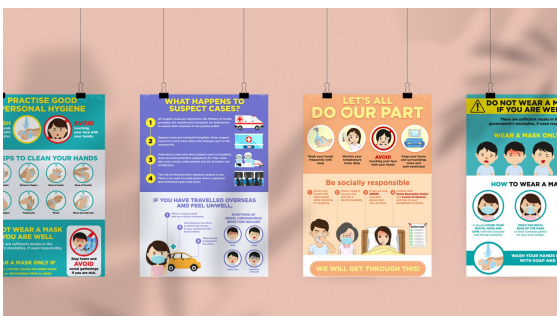
## RELATED ARTICLES



[COVID-19: Updates and announcements](#)



[Public Places Visited by Cases in the Community during Infectious Period](#)



[COVID-19 Resources](#)



[COVID-19: Advisories for Various Sectors](#)



## Safeguarding Lives and Livelihoods

Is this page useful? [Yes](#) · [No](#)

[Is there anything wrong with this page?](#)

### Most Popular

---

Roadmap to Phase 3

---

Safeguarding Lives and Livelihoods

---

Updates to border measures for travellers entering Singapore

---

Increase of wedding and cinema caps, updated guidelines on returning back to work

---

5 Government initiatives you may benefit from this year-end



[Who We Are](#)

[Contact](#)

[FAQ](#)

[Privacy Statement](#)

[Terms of Use](#)

[Rate This Website](#)

[Report Vulnerability](#)



© 2020 Government of Singapore Last updated on 05 Dec 2020