

COVID-19: Cases in Singapore

An update of the latest confirmed cases in Singapore

Min Read | Published on 12 Dec 2020 | Last updated on 12 Dec 2020



Share :      | 

Listen

As of 12 December 2020, 12pm, the Ministry of Health (MOH) has confirmed and verified that there are no new cases of locally transmitted COVID-19 infection. There are 8 imported cases, who had already been placed on Stay-Home Notice (SHN) upon arrival in Singapore. Amongst the new cases today, 7 are asymptomatic, and were detected from proactive screening and surveillance, while 1 was symptomatic.

Overall, the number of new cases in the community has remained low, with no new cases in the past week.

- Cases in the community: **0**

There are no cases in the community today.

- Cases residing in dormitories: **0**

There are no cases residing in dormitories today.

- Imported cases: **8 (1 symptomatic, 7 asymptomatic)**

Amongst the 8 imported cases, 5 are Singaporeans and 1 is a Singapore Permanent Resident who returned from Nepal, UK and India. Another 2 cases are Dependant's Pass holders who arrived from the US and Maldives. They had already been placed on SHN upon arrival in Singapore and were tested while serving SHN.

5 more cases of COVID-19 infection have been discharged from hospitals or community isolation facilities. In all, 58,197 have fully recovered from the infection and have been discharged from hospitals or community care facilities.

Most of the 28 confirmed cases who are still in hospital are stable or improving. None is in critical condition in the intensive care unit.

59 cases who have mild symptoms, or are clinically well but still test positive for COVID-19 are isolated and cared for at community facilities.

29 have passed away from complications due to COVID-19 infection.

Related link: [List of public places visited by confirmed cases in the community during Infectious Period](#)

For more details, refer to MOH's [press release](#).

TOPICS

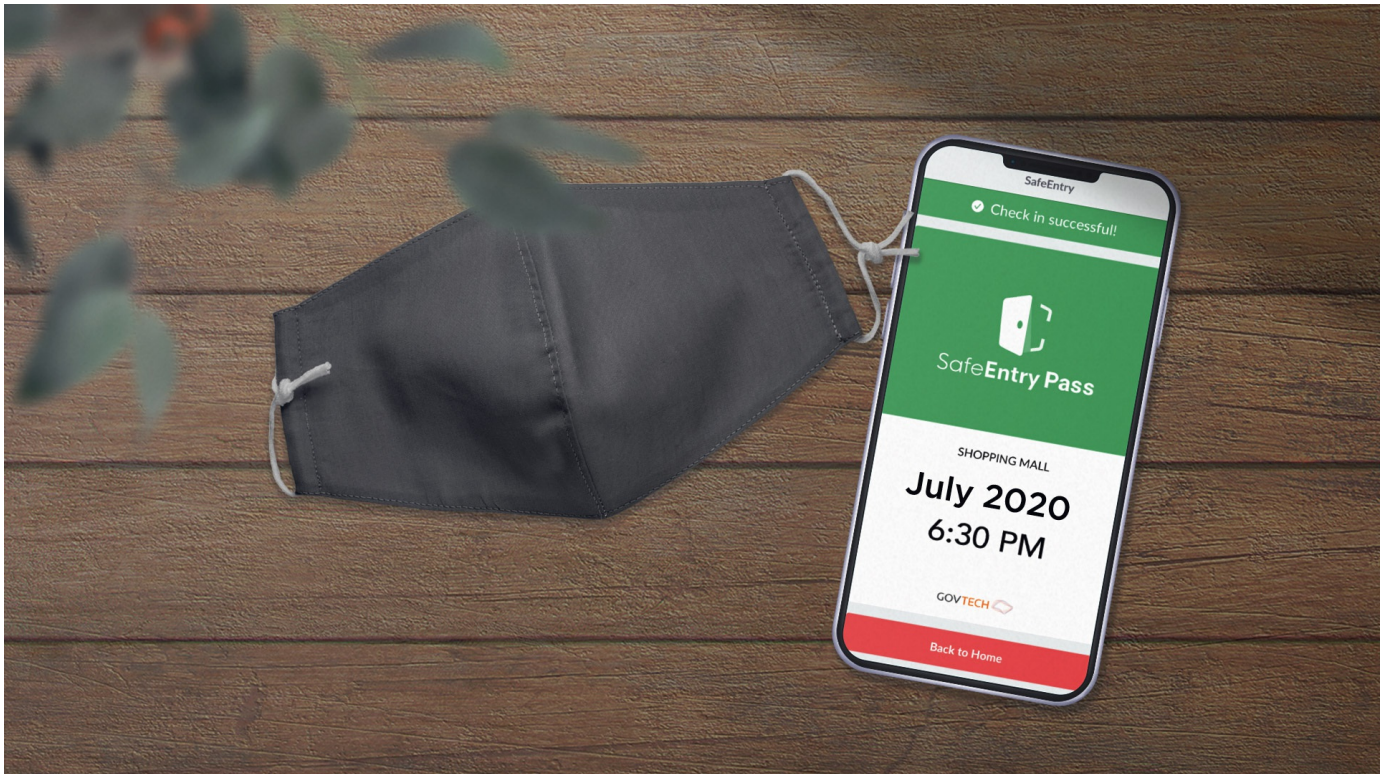
HEALTH

COVID-19

Share: [f](#) [t](#) [in](#) [w](#) [e](#) | [p](#)

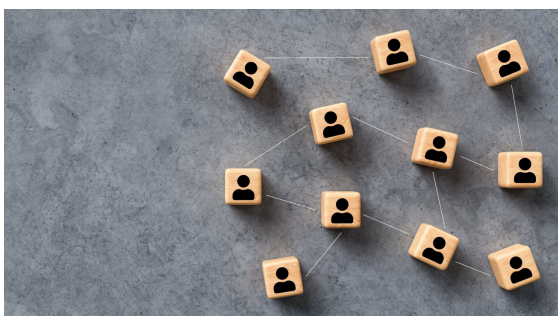
PART OF A SPECIAL FEATURE

COVID-19 (Coronavirus Disease 2019)



EXPLORE [➔](#)

RELATED ARTICLES



Public Places Visited by Cases in the Community during Infectious Period

COVID-19: Updates and announcements



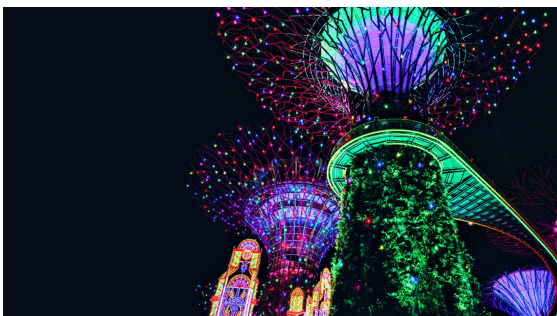
Gov.sg How-Tos: How to bring sport back safely



Experts Explain: COVID-19 and safe management measures



How to stay safe over the holidays



Is this page useful? [Yes](#) • [No](#)

Is there anything wrong with this page?

Most Popular

Roadmap to Phase 3

Safeguarding Lives and Livelihoods

Updates to border measures for travellers entering Singapore

Increase of wedding and cinema caps, updated guidelines on returning back to work

5 Government initiatives you may benefit from this year-end



[Who We Are](#)

[Contact](#)

[FAQ](#)

[Privacy Statement](#)

[Terms of Use](#)

[Rate This Website](#)

[Report Vulnerability](#)



© 2020 Government of Singapore Last updated on 12 Dec 2020