



Epidemiology Unit

Ministry of Health & Indigenous Medical Services

231, De Saram Place, Colombo 10, Sri Lanka

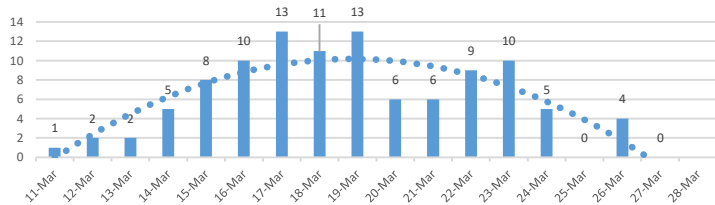
Tele: (+94 11) 2695112, 2681548, 4740490, 4740491, 4740492 Fax: (+94 11) 2696583 E-mail: chepid@stnet.lk, epidunit@stnet.lk Web: www.epid.gov.lk

Coronavirus disease 2019 (COVID-19) - Situation Report – 28.03.2020 – 10.00am

An outbreak of pneumonia of unknown reason was first reported on 31st December 2019 from Wuhan City in Hubei Province of China. On 7th Jan 2020, it was diagnosed as “Novel Corona Virus”. On 30/01, WHO has declared it as a Public Health Emergency of International Concern (PHEIC). On 11/02/2020 the WHO renamed the disease as COVID-19 and on 11/03/2020 declared as pandemic. The incubation period is reported as 2-14 days.

Local Situation

New patients - Sri Lanka



- Last confirmed patient identified on 26/03/2020
- Total number of confirmed – 106 (Recovered 9, Inward -97)
- 97 patients- (IDH 87, BH Mulleriyawa 1, BH Welikanda 9)
- Total number of individuals in hospitals - 199

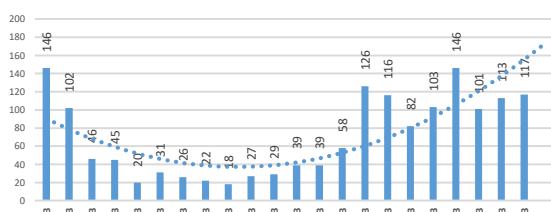
Hospital	Cumulative			Today 10am		
	SL	Foreigners	Total	SL	Foreigners	Total
NIID	560	76	636	94	2	96
NHSL	86	7	93	4	0	4
TH Ragama	119	2	121	11	0	11
TH Karapitiya	130	16	146	1	0	1
TH A'pura	49	2	51	0	0	0
TH Kurun.	125	1	126	7	0	7
TH Jaffna	26	1	27	1	0	1
NH Kandy	67	6	73	4	0	4
TH Battico.	25	0	25	3	0	3
DGH Gampaha	117	4	121	4	0	4
DGH Negombo	144	13	157	3	0	3
TH Rathn.	84	0	84	2	0	2
PGH Badulla	26	1	27	2	0	2
LRH	28	0	28	0	0	0
DMH	7	0	7	0	0	0
DGH Polon'wa	69	6	75	9	0	9
TH Kalubowila	17	0	17	0	0	0
Castle St TH	9	0	9	1	0	1
BH Ham'thota	59	1	60	2	1	3
BH Mona'gala	23	0	23	1	0	1
BH Welikanda	43	1	44	21	1	22
DGH Kaluthara	96	0	96	10	0	10
Chest H. Welisara	6	0	6	2	0	2
BH Mulleriyawa	1	0	1	1	0	1
BH Homagama	25	1	26	11	1	12
Dr Neville F. Ho	3	0	3	0	0	0
Total	194	5	199			

Source : Epidemiology Unit, Disease Surveillance System

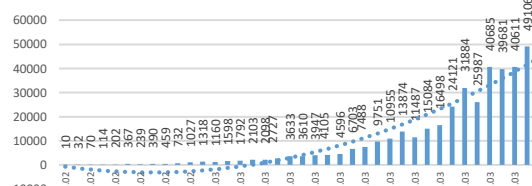
Global Situation

- 509,164 – Laboratory_confirmed cases (82,078 – China, 427,086 – Outside China)
 - 23,335 deaths (3298 – China, 20,037 outside China)
 - Patients are reported from 200 countries/territories
- Ref. WHO situation report - 27/03/2020

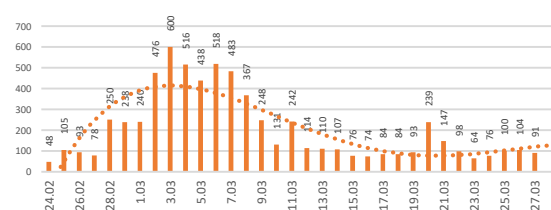
New Patients-China



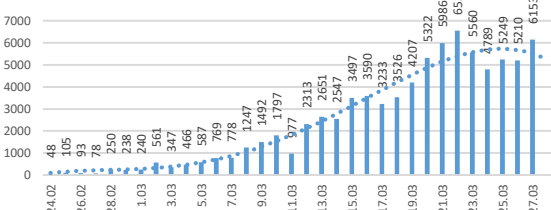
New Patients Outside China



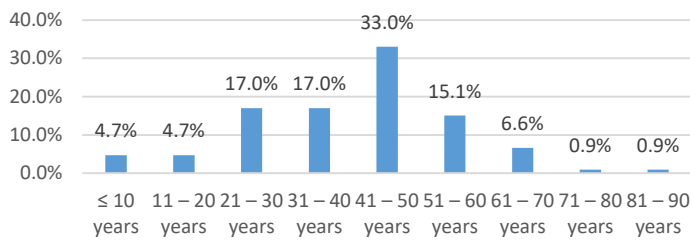
New Patients - S. Korea



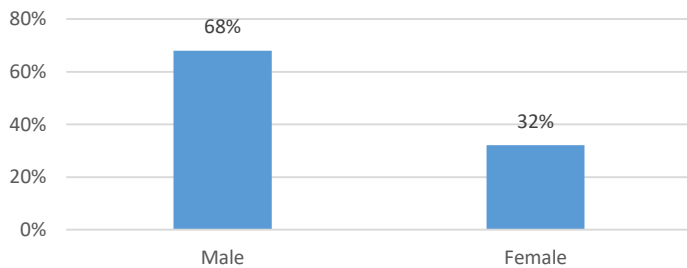
New Patients - Italy



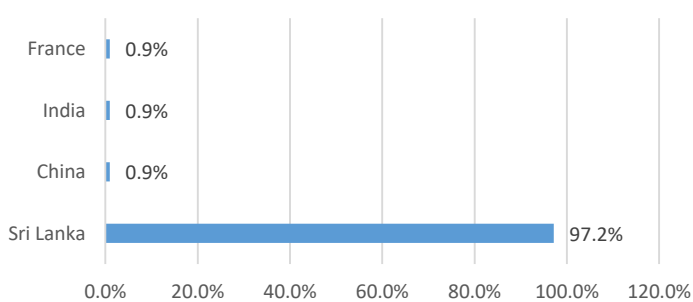
Age distribution of COVID-19 confirmed in Sri Lanka



Gender distribution of COVID-19 confirmed in Sri Lanka



COVID-19 confirmed in Sri Lanka - Nationality



District Distribution of Confirmed Patients

DISTRICT	Count
COLOMBO	25
KALUTARA	15
GAMPAHA	10
PUTTALAM	9
RATNAPURA	3
KURUNEGALA	1
GALLE	1
KEGALLE	1
BATTICOLOA	1
BADULLA	1
JAFFNA	1
MATARA	1
KANDY	0
MATALE	0
NUWARAELIYA	0
HAMBANTOTA	0
KILINOCHCHI	0
MANNAR	0
VAVUNIA	0
MULLATIVU	0
AMPARA	0
TRINCOMALEE	0
ANURADHAPURA	0
POLONNARUWA	0
MONERAGALA	0
KALMUNAI	0
QUARANTINE CENTERS	34
FOREIGNERS	3
Total	106