

Daily COVID-19 Surveillance Bulletin

PHA HP Respiratory Surveillance team

Date generated: 24/03/2020

Version 1.2

Data correct to 24/03/2020 at 11:19

Total number of new positive cases from yesterday: 24*

Total number of new tests from yesterday: 297

Total number of new deaths¹ from yesterday: 2**

*Please note: this is the change in the total number of positive COVID-19 cases since yesterday's morning report. This includes individuals that may have had a specimen taken in previous days (not just the last 24 hours). Information on the positive cases by specimen date is available in Fig 1. This is how the trend of cases is monitored across the United Kingdom and Republic of Ireland, in accordance with WHO guidance.

**1 death reported 23/03/20, 1 death reported from 18/03/20

Table 1 COVID-19 test results by outcome, in Northern Ireland

| COVID-19 Testing indicator | Number |
|--|--------|
| Total number of Negative samples to date | 2817 |
| Total number of Positive cases to date | 172 |
| Total Number of Completed tests | 2989 |

¹ Accurate as at 0900

Table 2 Age and gender characteristics for positive COVID-19 cases

| Case Characteristics | | Number |
|----------------------|----------|--------|
| Age | 0 to 44 | 59 |
| | 45 to 69 | 59 |
| | 70+ | 54 |
| Sex | F | 76 |
| | M | 96 |

Table 3 Total completed tests by Health and Social Care Trust, Northern Ireland

| Trust | Number of Total Tests |
|---------|-----------------------|
| BHSCT | 1109 |
| SEHSCT | 528 |
| NHSCT | 443 |
| SHSCT | 543 |
| WHSCT | 298 |
| Other | 65 |
| Unknown | 3 |

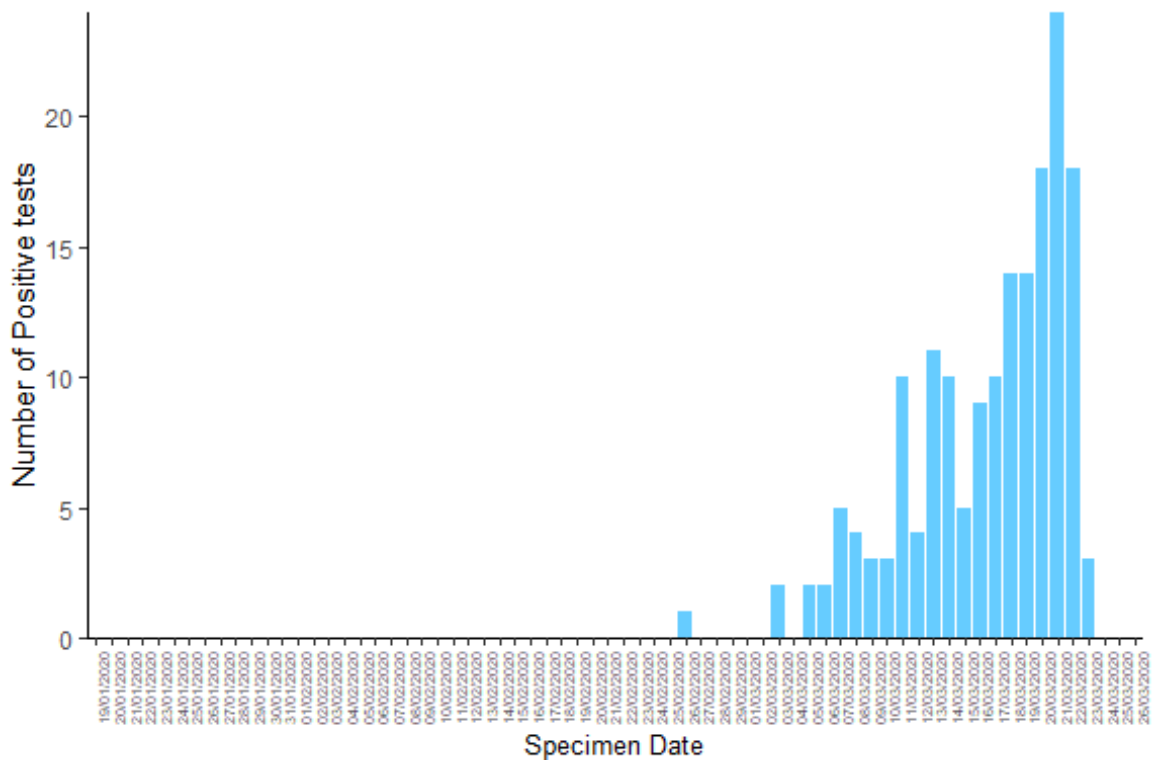


Figure 1. Daily number of new confirmed cases of COVID-19 by specimen date

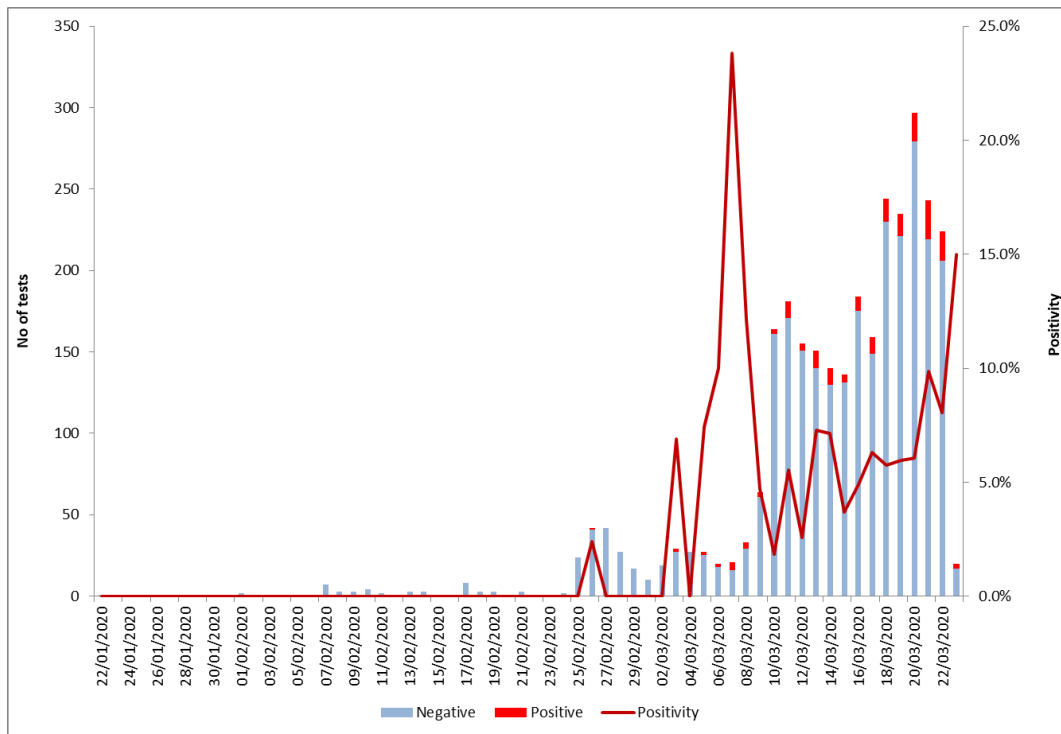


Figure 2. Number of COVID-19 tests completed and positivity rate, by specimen date, Northern Ireland

Number of laboratory confirmed cases of COVID-19 by Local Government District

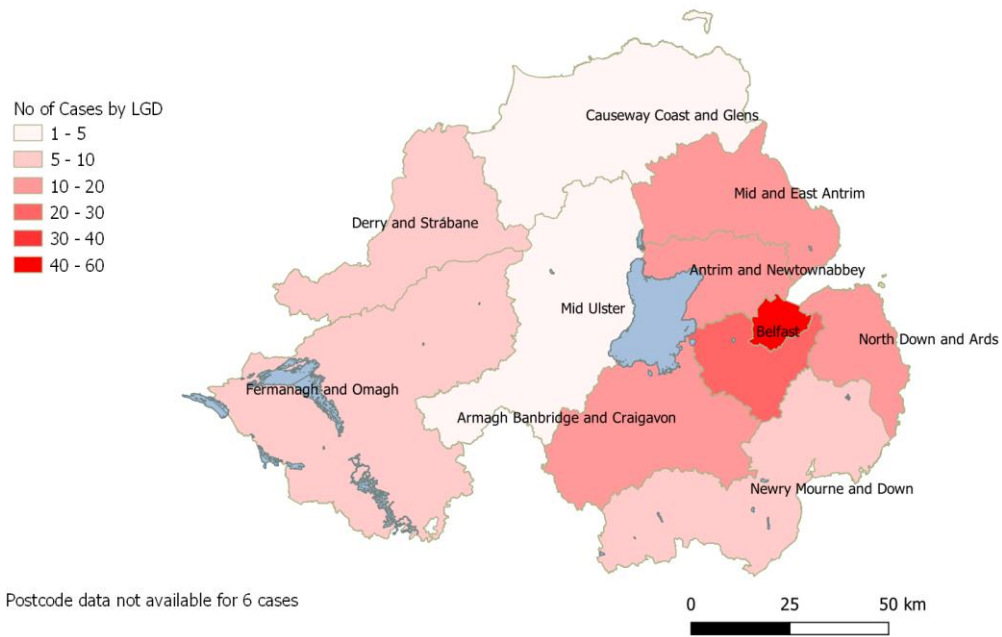


Figure 3: Location of confirmed COVID-19 cases by LGD in Northern Ireland

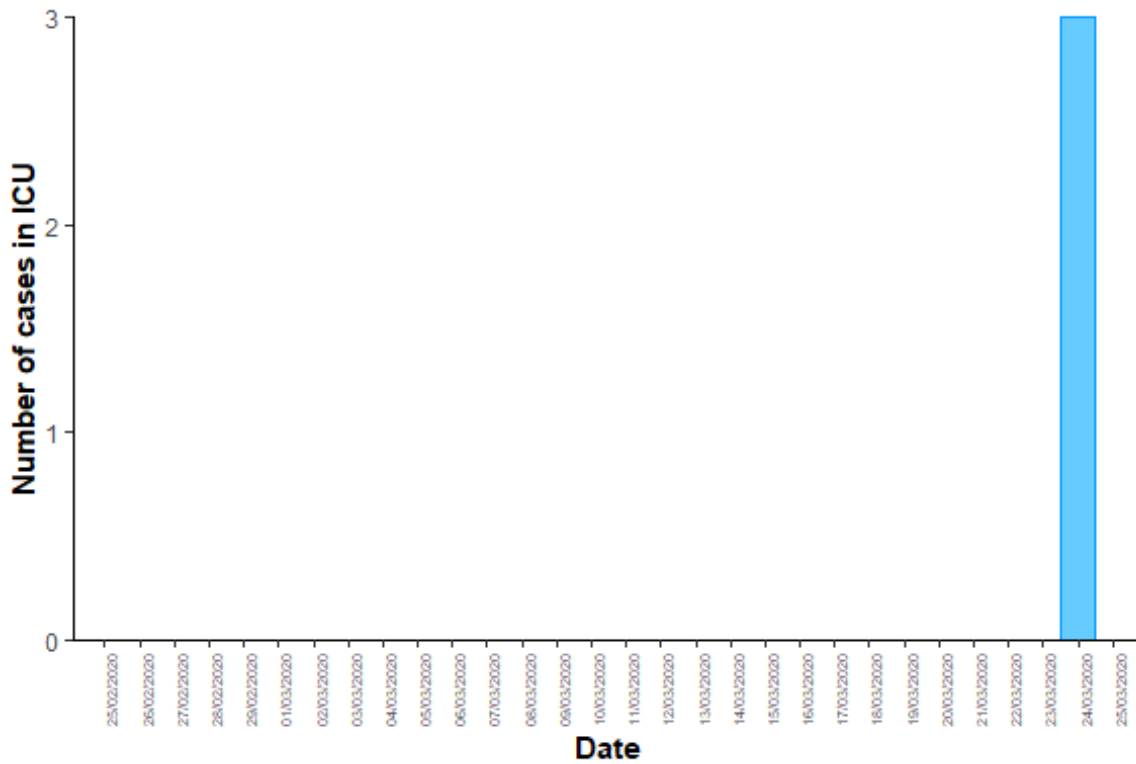


Figure 4. Number of individuals admitted to Intensive Care (ICU) per day associated with COVID-19, in Northern Ireland*

***Please note: these are the number of individuals currently in an ICU ward with COVID-19**

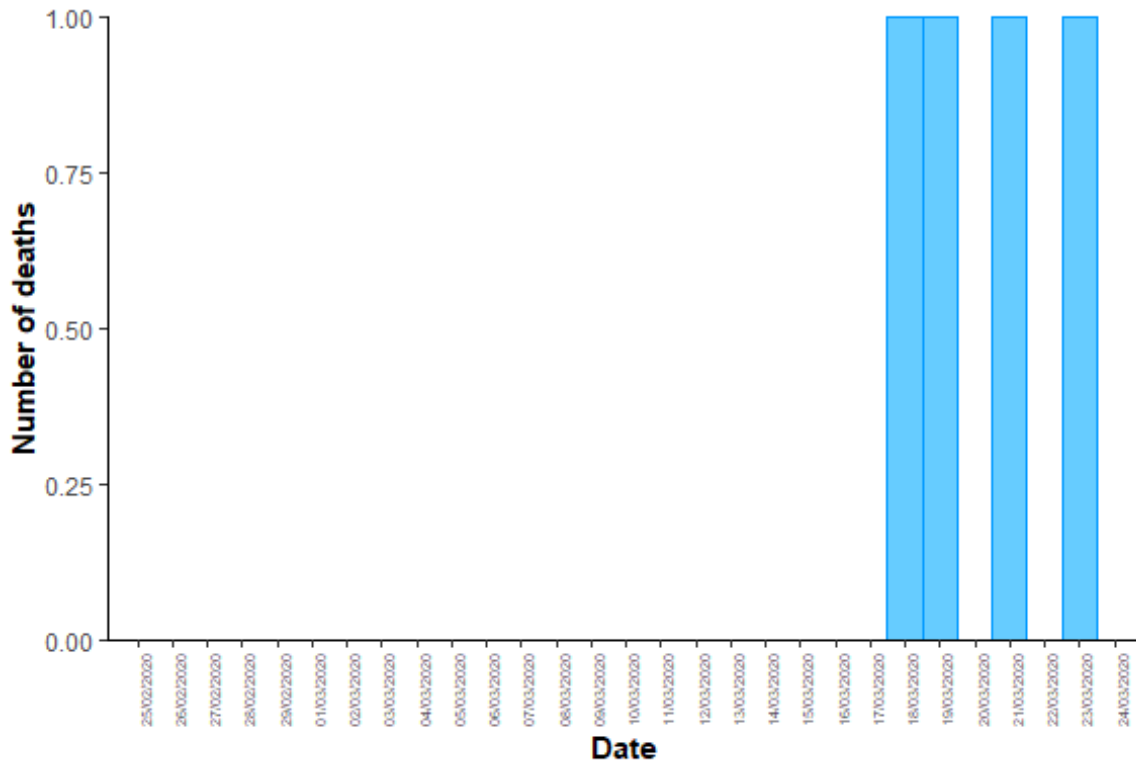


Figure 5. Number of deaths associated with COVID-19, in Northern Ireland*

***Currently the definition of a death associated with COVID-19 is an individual that has been reported to the PHA by a clinician who died within 28 days of a positive COVID-19 specimen.**

Caveats

Please note, that as of 13th March the daily SitRep is now based on virology data only. Unlike the virology data, this report is based on individuals tested rather than tests conducted. For example, one individual will have multiple tests. In the PHA dataset they would be counted once whereas in virology they would have multiple entries.

Prior to the 13th March, total tests included only individuals that met the case definition (travel and clinical criteria). However, during this time wider testing was also being conducted across all Trusts in Northern Ireland. These individuals are now included in the overall virology total resulting in an overnight increase of approximately 400 tests which affected the total number of tests and total number of negative reports.

On the 13th March, the case definition also changed such that testing was limited to acute Trust admissions only. This will likely lead to a reduction in the total number of tests being performed and an increase in the positivity rate.