

902 Confirmed Cases 0 Death
Cases

HOME

ABOUT CORONAVIRUS

COVID-19 COMMUNICATION RESOURCES

TECHNICAL GUIDANCE

MINISTRY OF HEALTH HOME

FAQ



COVID-19 STATUS

CONFIRMED CASES

902

ACTIVE CASES

188

RECOVERIES (BOTH
UGANDANS AND NON-
UGANDANS)

847

COVID-19 FOREIGN
TRUCK DRIVERS EXITED

1,043

CONTACTS LISTED

11,147

SAMPLES TESTED

196,830

CONTACTS COMPLETED
FOLLOWUP

9346

CONTACTS UNDER
FOLLOWUP

1801

UNDER QUARANTINE

1,216

FOREIGN CASES ON
ADMISSION

25

UGANDANS ON
ADMISSION

163

CORONAVIRUS (COVID-19) —

COVID-19 SYMPTOMS



SHORTNESS OF BREATH

[READ MORE](#)



HIGH FEVER

[READ MORE](#)



DRY COUGH

[READ MORE](#)

MOH GUIDELINES



NATIONAL GUIDELINES FOR QUARANTINE

On 30 January 2020, the WHO

declared the outbreak of coronavirus disease (COVID-19) a Public Health Emergency of International...

[READ MORE](#)



SECTOR GRANT AND BUDGET GUIDELINES

Sector Grant and Budget Guidelines to Local Governments. These guidelines are issued by the Ministry of Health (MOH) to...

[READ MORE](#)



PRIMARY HEALTH CARE NON-WAGE RECURRENT GRANT

Primary Health Care Non-Wage Recurrent Grant and Budget Guidelines to Health Centre II, III and IV, and General Hospitals....

[READ MORE](#)



MINISTRY OF HEALTH

Guidelines for the use of Masks

1. What are the types of masks on the Ugandan market?	<p>There are two types of masks on the Ugandan market namely:</p> <ul style="list-style-type: none"> • Medical • Non-Medical <p>The medical masks include: N95, H95, and surgical masks.</p> <ul style="list-style-type: none"> • The non-medical masks are made out of fabric (cloth) • Medical masks should be reserved for health workers in health facilities and are not available since it is used in a hostile environment. It is highly resistant to various infectious organisms, and to reuse safely.
2. How do face masks work?	<ul style="list-style-type: none"> • COVID-19 is spread through sneezing, coughing, talking and breathing. • When an infected person wears a face mask, the mask blocks the air from coming through sneezing, coughing, talking and breathing. • The mask also prevents droplets from an infected person reaching the nose and mouth of the person wearing it.
3. What type of masks should be used by the community?	<ul style="list-style-type: none"> • The community is encouraged to use non-medical masks (masks made out of fabric or paper). • A paper/cloth mask with a filter material (e.g. paper filter) or cotton filter or any material that makes it often used for non-patient (protecting high ground) between the 2 people who wear the mask. The material acts as a filter and can be removed before wearing. The procedure is washable and reusable.
4. How preferable are cloth and other face-masks?	<ul style="list-style-type: none"> • "Wearing a cloth cover mask is considered a 'first' mask. It can be worn over a N95, H95 or an CDC mask.
5. Who should wear a mask?	<ul style="list-style-type: none"> • All adults • Children aged 6 years and above (those with breathing difficulties) should seek advice from medical personnel. • Children aged 2-5 years are very active and cannot take care of their masks and observe hygiene. They should only put on masks under close supervision. • Children below 2 years should not wear a mask as they have a small lung capacity.

GUIDELINES FOR THE USE OF MASKS

What are the types of masks on the Ugandan market?

[READ MORE](#)

ARE YOU READY FOR COVID-19



Show empathy with those affected



Learn about the disease to assess the risks



Adopt practical measures to stay safe

[Learn more to Be READY for COVID-19](#)

ADDRESS FEAR



Share the latest facts & avoid hyperbole



Show solidarity with affected people



Tell the stories of people who have experienced the virus

[Learn more to Be READY for COVID-19](#)

ADDRESS STIGMA



Check in regularly especially with those affected



Encourage them to keep doing what they enjoy



Share WHO information to manage anxieties



Provide calm and correct advice for your children

[Learn more to Be READY for COVID-19](#)

ALWAYS BE KIND

condition like:



Cardiovascular disease



Respiratory condition



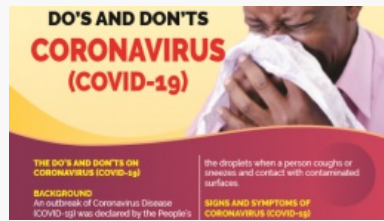
Diabetes

by avoiding crowded areas or places where you might interact with people who are sick.

[Learn more to Be READY for COVID-19](#)

ALWAYS STAY INFORMED DOS AND DONTs OF COVID-19

PENDEMIC



DO'S AND DON'TS

BACKGROUND An outbreak of Coronavirus Disease (COVID-19) was declared by the People's Republic of China on 31st December, 2019....

[READ MORE](#)



CORONAVIRUS – DOS AND DONTES – A5 FLYER

CORONAVIRUS (COVID-19)
BACKGROUND An outbreak of Coronavirus Disease (COVID-19) was declared by the People's Republic of China on 31st...

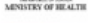
[READ MORE](#)




NGAKARAMOJONG DOS AND DONTES

Abwanguni edeke lo ana kwamp a china ngirwa kelap 31.12.2019 elapar edeke loo ngakwapin nguna elalaak Epepori edeke lo...

[READ MORE](#)





**EBIKOLEBWA N'EBITAKOLEBWA
YIGGU NKANI KORONA
(COVID -19)**

OLUMMBE OLWA YIGGU NKANI KORONA
Ghano namawango ag'endwaire ya Yigu nkani Korona agakolebwa n'agatakolebwa.

EBYAFAYO
Endwaire ya Korona - yabukozwa mwihanga lya china lwelyatangila nka 31/ 12/2019.
Endwaire eno, esororire awaghangira gona gona.

Obwobol bwa yigu, nkani Korona, obw'okusozana mu Uganda buli waguuli nka,
.....

LUSOGA DOS AND DONTs

OLUMMBE OLWA YIGGU
NKANI KORONA Ghano
namawango ag'endwaire ya
Yigu nkani Korona agakolebwa
n'agatakolebwa. EBYAFAYO
Endwaire ya Korona ,...

[READ MORE](#)

HANDLING OF MASKS


<https://youtu.be/6Pah31SmIZ0>

COVID-19 ADVISE

<https://youtu.be/U-QDdZdj-Dk>

GRAPHICS

<
>



OUR MISSION

Our Mission is to provide the highest possible level of health services to all people in Uganda through delivery of promotive, preventive, curative, palliative and rehabilitative health services at all levels”

CALL US TODAY

Address: Plot 6, Lourdel Road,
Nakasero P.O Box 7272, Kampala
Uganda. Toll Free Lines 0800 203
033 0800 100 066

Website: www.health.go.ug

SUBSCRIBE

First name or full name

Email

By continuing, you accept the privacy policy

Subscribe

HEALTH TIPS

Wash you hands daily with the soap

Wear a mask if you are coughing or sneezing.

If you wear a mask, then you must know how to use it and dispose of it properly.



Copyright © 2020. All rights reserved to Ministry Of Health | Government Of Uganda | Covid-

19 [Ica](#)

Opportunities [MOH Opportunities](#)

