



Guam COVID-19 Situation Report - 165

March 12–October 12, 2020

COVID-19 Cases
Primary Reported Residence

COVID-19 Case Count*	Total	Today	Past 7 days
COVID-19 Cases	3,170	181	417
Confirmed cases	3,161	179	410
Probable cases	9	2	7

*<https://www.cdc.gov/nndss/conditions/coronavirus-disease-2019-covid-19/case-definition/2020/08/05/> - CSTE/CDC COVID-19 case definition (August 5, 2020)

Summary

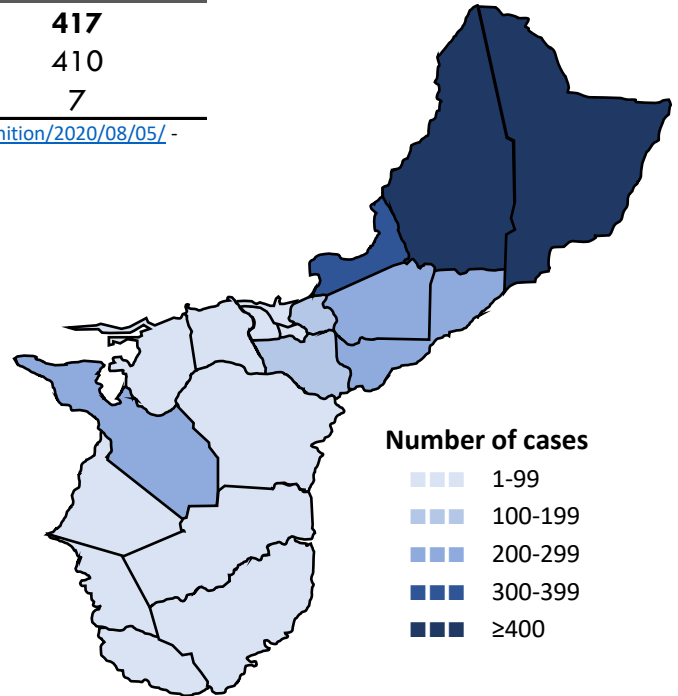
As of October 12, 2020, there have been 3,170 cases of COVID-19 reported on Guam. One hundred and eighty-one (181) new cases of COVID-19 were reported to DPHSS from October 9–11: 179 confirmed cases and 2 probable cases. One hundred and seven (107) cases were reported on October 9, 50 on October 10, and 24 on October 11. Two COVID-19 cases were reported deceased from October 9–11.

New confirmed cases reported today: 103 cases tested positive at GPHL, 45 tested positive at DLS, 11 tested positive at AMC, 9 tested positive at GMHA, 9 tested positive at GRMC, and 2 tested positive at Guam Radiology Consultants.

New probable cases reported today: 2 cases tested positive by antigen testing at IHP.

Forty-eight (48) cases were identified through contact tracing. Four cases reported recent travel from the US and were identified in quarantine. One hundred and seventeen (117) cases were reported released from isolation.

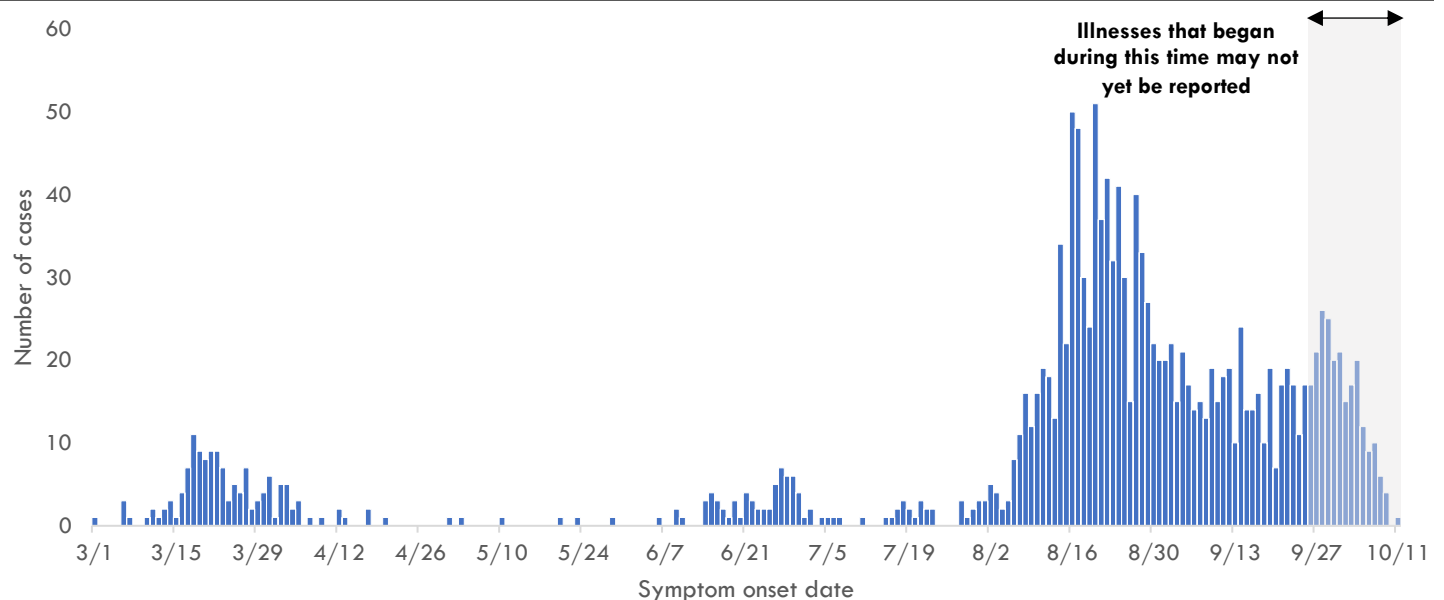
As today is a federal holiday, COVID-19 reporting from DoD for October 9–11 will be reported tomorrow, 10/13. The map legend has been adjusted.



COVID-19 Testing on Guam**	Total	New tests reported today	Percent positive
COVID-19 Tests	55,885	1,200	5.7%
Molecular Tests	55,665	1,188	5.7%
Serology Tests	197	5	2.5%
Antigen Tests	23	7	39.1%

**See COVID-19 Testing Breakdown for all testing definitions. New tests reported reflects the number of tests reported to DPHSS since the previous report and does not necessarily indicate the number of samples run in the same time frame. Complete test reporting is pending for antigen tests conducted by IHP.

COVID-19 cases by symptom onset date, Guam





Guam COVID-19 Situation Report - 165

March 12–October 12, 2020

Case Breakdown

Status	Sex	Current isolation location
COVID-19 deaths	Female	Hospital
Cases in active isolation†	Male	Home
Cases not in isolation‡	Age Group	Isolation facility
Civilian	0-9	Military
Military service member	10-19	Epi-Link to COVID-19 case**
Travel History ¶	20-29	Household contact
US	30-39	Community contact
Dubai	40-49	Workplace contact
Japan	50-59	Healthcare contact
Mexico	60-69	Residence
Philippines	70-79	North
Singapore	80-89	Central
Identified in quarantine	90+	South
		Homeless
		Non-resident

Note: Data for recent cases are preliminary and are updated based on findings from case investigations. Residence under investigation for 76 cases.

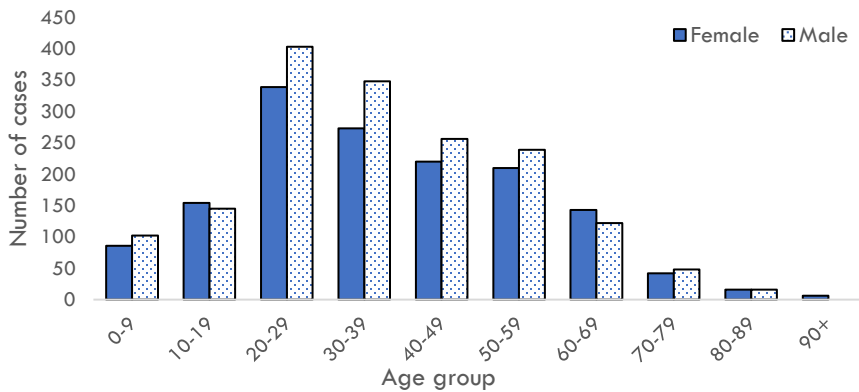
† Cases that test positive for COVID-19 through follow-up molecular testing return to active isolation.

‡ Cases not in isolation indicates the number of COVID-19 cases that are no longer in active isolation based on criteria outlined on page 4. Generally, the criteria assess time since COVID-19 symptom resolution and the date of their most recent positive diagnostic test to qualify for release from isolation.

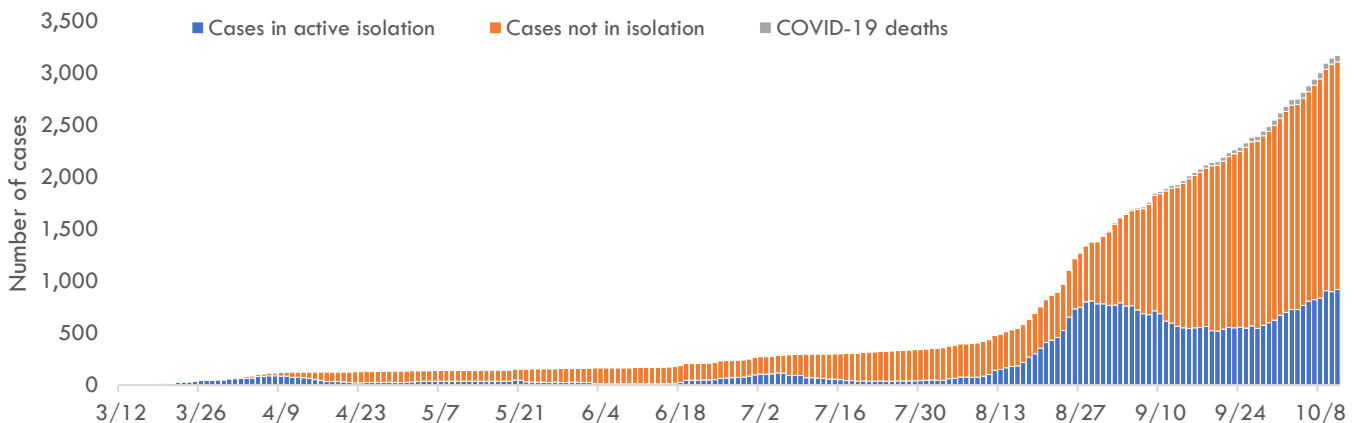
¶ In the 14 days before symptom onset. Some cases traveled to more than one country.

** Some cases have more than one link to other COVID-19 cases.

COVID-19 cases by age group and sex



Number of cases in active isolation, cases not in isolation, and COVID-19 deaths, Guam





Guam COVID-19 Situation Report - 165

March 12–October 12, 2020

COVID-19 TESTING BREAKDOWN

MOLECULAR TESTS	TOTAL	TOTAL POSITIVES*	NEW TESTS	NEW POSITIVES
Guam Public Health Laboratory	29,471	1,592	653	103
Diagnostic Laboratory Services	8,014	532	252	45
Department of Defense	7,619	482	0	0
Guam Memorial Hospital Authority	5,462	243	89	9
Guam Regional Medical City	3,359	160	114	9
Private Clinics**	1,723	150	80	13
Guam National Guard Laboratory	17	0	0	0

SEROLOGY TESTS	TOTAL	TOTAL POSITIVES	NEW TESTS	NEW POSITIVES
Diagnostic Laboratory Services	189	5	5	2
Department of Defense	8	0	0	0

ANTIGEN TESTS	TOTAL	TOTAL POSITIVES	NEW TESTS	NEW POSITIVES
Private Clinics***	23	9	7	2

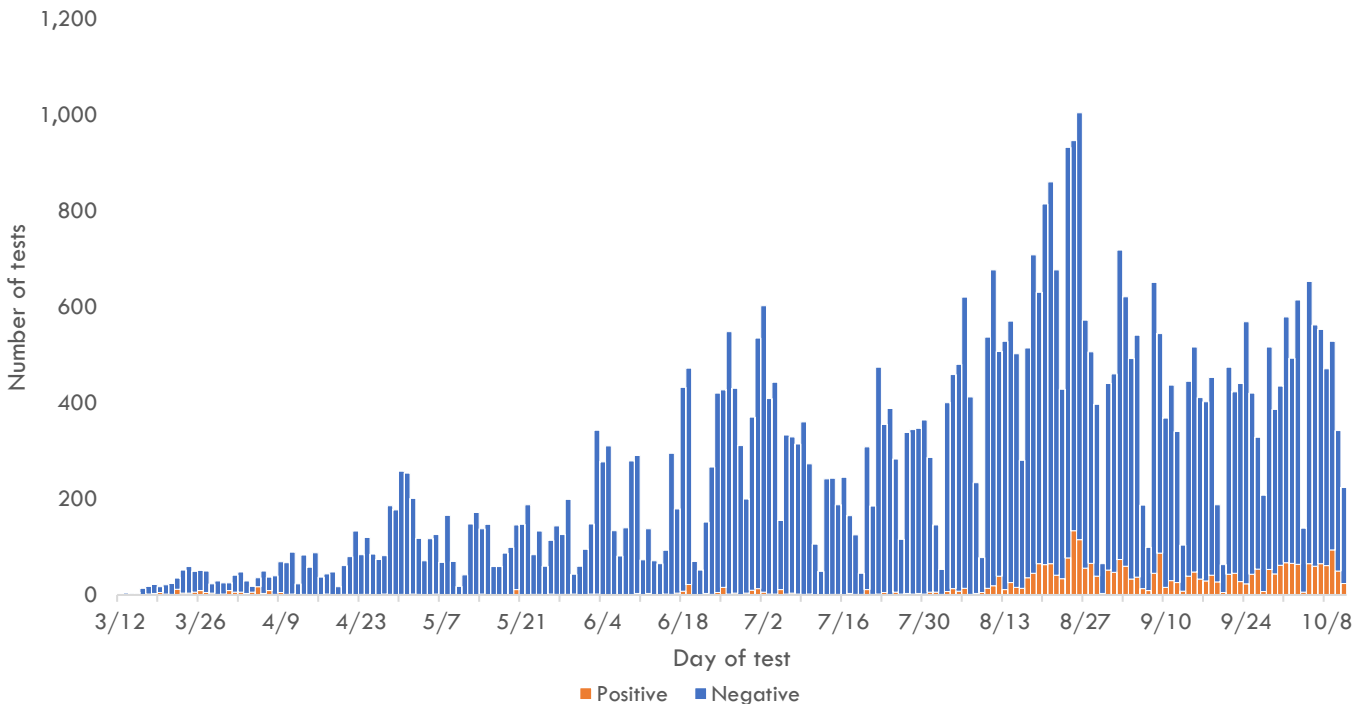
Total tests is defined as the number of tests with conclusive results not including follow-up testing for known COVID-19 cases. New tests reported today is defined as the total tests reported to DPHSS since the last Situation Report. Percent positive is defined as number of people with a positive test result, out of all people with COVID-19 testing. Total positives is defined as the number of people with a positive test result.

*Two additional confirmed cases tested positive through molecular testing at an out-of-state laboratory.

**Clinics included: American Medical Center, Guam Medical Care, Guam Radiology Consultants, and One Love Pediatrics.

***Clinics included: Guam Medical Care and IHP Medical Group.

COVID-19 testing by day of test, Guam



CONTACT INVESTIGATIONS	TOTAL	10/11/20
Contacts identified by DPHSS	9,349	90
Contacts tested by DPHSS	3,417	31
Cases identified through contact tracing	1,141	48

Note: Data for recent cases are preliminary and are updated based on findings from case investigations.

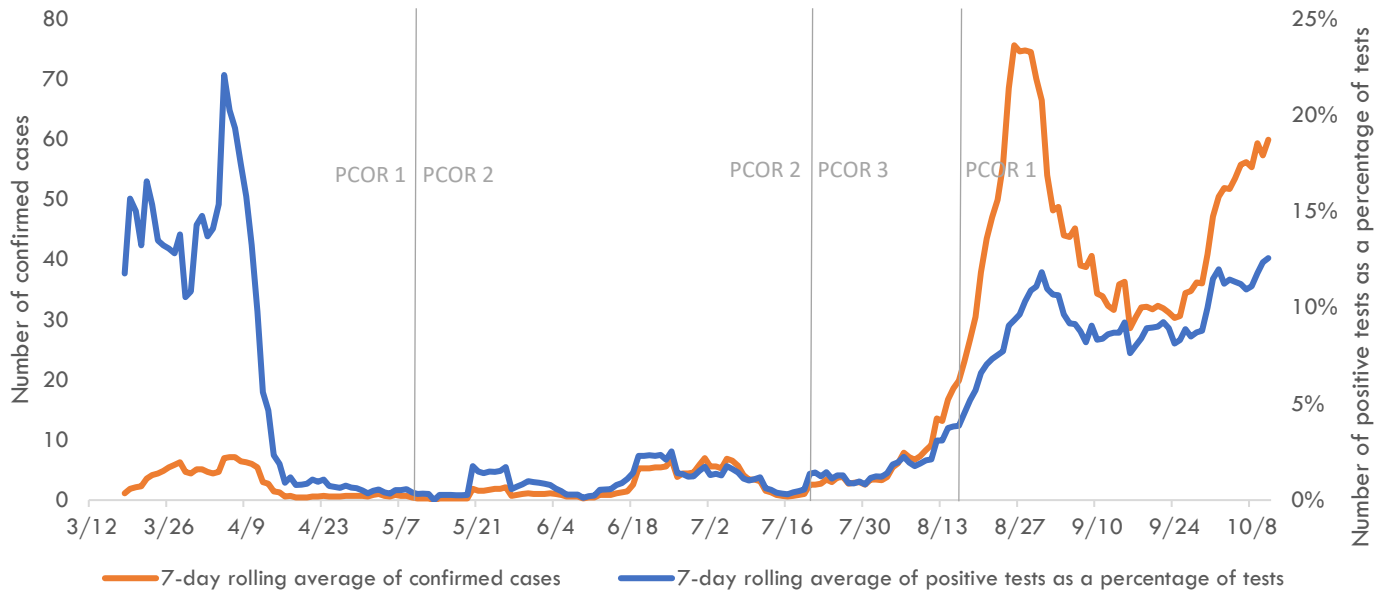


Guam COVID-19 Situation Report - 165

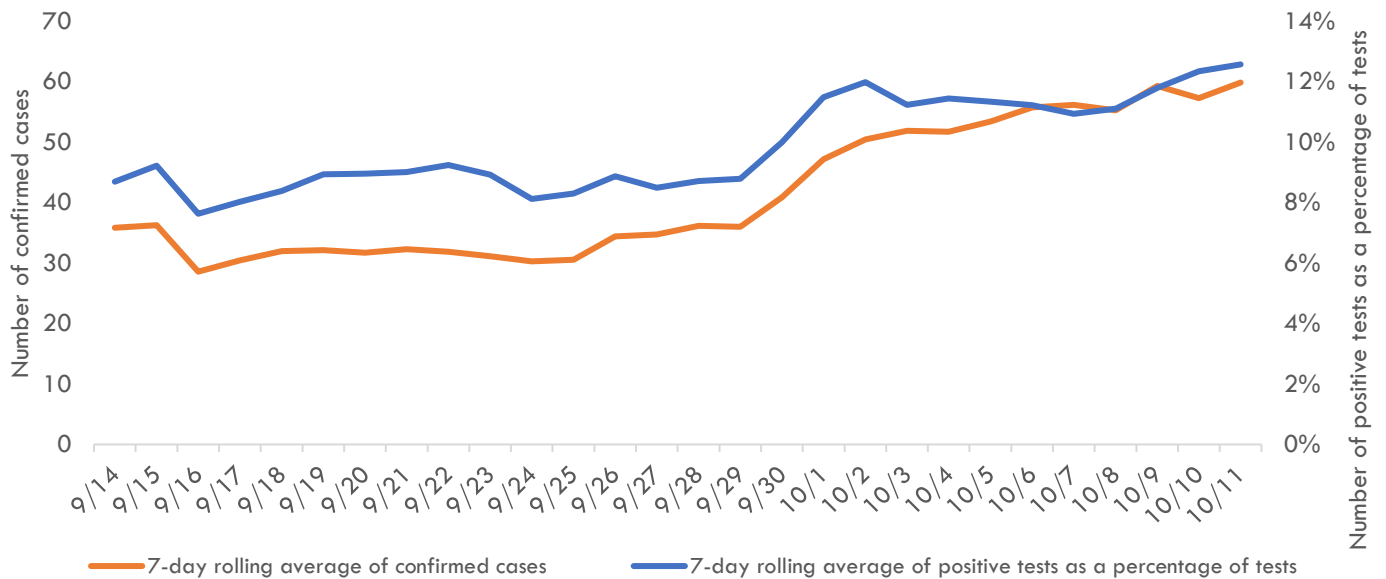
March 12–October 12, 2020

Pandemic Condition of Readiness Assessment

Triggers for PCOR - Cases, March 12–October 11, 2020



Triggers for PCOR - Cases, Previous 28 days



† Criteria for release from isolation

For persons with mild to moderate illness who are not severely immunocompromised:

For persons having symptoms: At least 3 days have passed since recovery defined as resolution of fever without the use of fever-reducing medications and improvement in respiratory symptoms (e.g., cough, shortness of breath) and any other symptoms attributed to COVID-19 AND at least 10 days have passed since symptoms first appeared—or since recurrent symptoms appeared—AND at least 10 days have passed since the date of their first (or most recent) positive COVID-19 diagnostic test.

For persons without symptoms: At least 10 days have passed since the date of their first (or most recent) positive COVID-19 diagnostic test assuming they have not subsequently developed symptoms since their positive test.

For persons with severe to critical illness or who are severely immunocompromised:

For persons having symptoms: At least 10 days have passed since symptoms first appeared, up to 20 days.

For persons without symptoms: At least 10 days have passed since the date of their first positive COVID-19 diagnostic test, up to 20 days.