



Guam COVID-19 Situation Report - 184

March 12–November 9, 2020

COVID-19 Cases
Primary Reported Residence

COVID-19 Case Count*	Total	Today	Past 7 days
COVID-19 Cases	5,473	396	659
Confirmed cases	5,375	377	624
Probable cases	98	19	35

*<https://www.cdc.gov/nndss/conditions/coronavirus-disease-2019-covid-19/case-definition/2020/08/05/> - CSTE/CDC COVID-19 case definition (August 5, 2020)

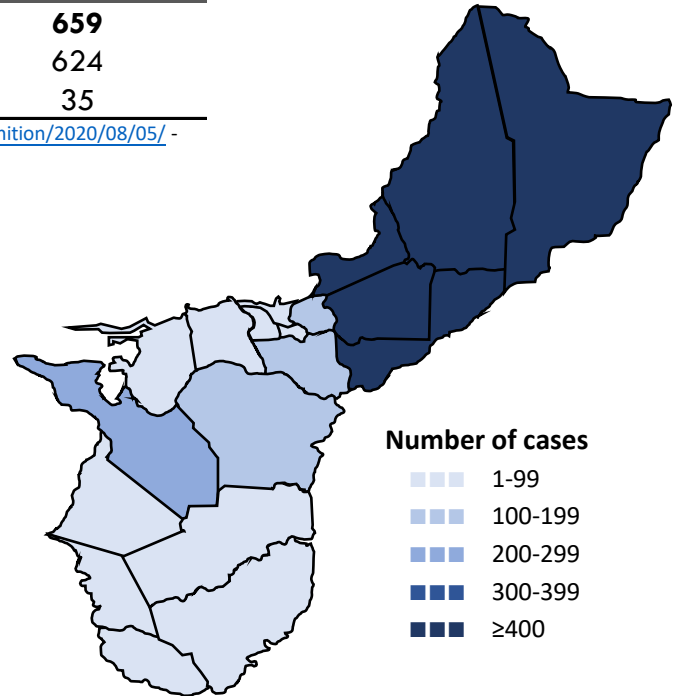
Summary

As of November 9, 2020, there have been 5,473 cases of COVID-19 reported on Guam. Three hundred and ninety-six (396) new cases of COVID-19 were reported to DPHSS from November 6-8: 377 confirmed cases and 19 probable cases. Fifty-eight (58) cases were reported on November 6, 148 on November 7, and 190 on November 8. Two COVID-19 cases were reported deceased since the last report: one on 11/7 and one on 11/9.

New confirmed cases reported today: 334 cases tested positive at GPLH, 14 tested positive at AMC, 10 tested positive at DLS, seven tested positive at GMHA, five tested positive at DoD, four tested positive at GRMC, two tested positive at Guam Radiology Consultants, and one tested positive at One Love Pediatrics.

New probable cases reported today: 19 cases tested positive by antigen testing: 16 at Central Medical Clinic, two at ExpressCare and one at IHP.

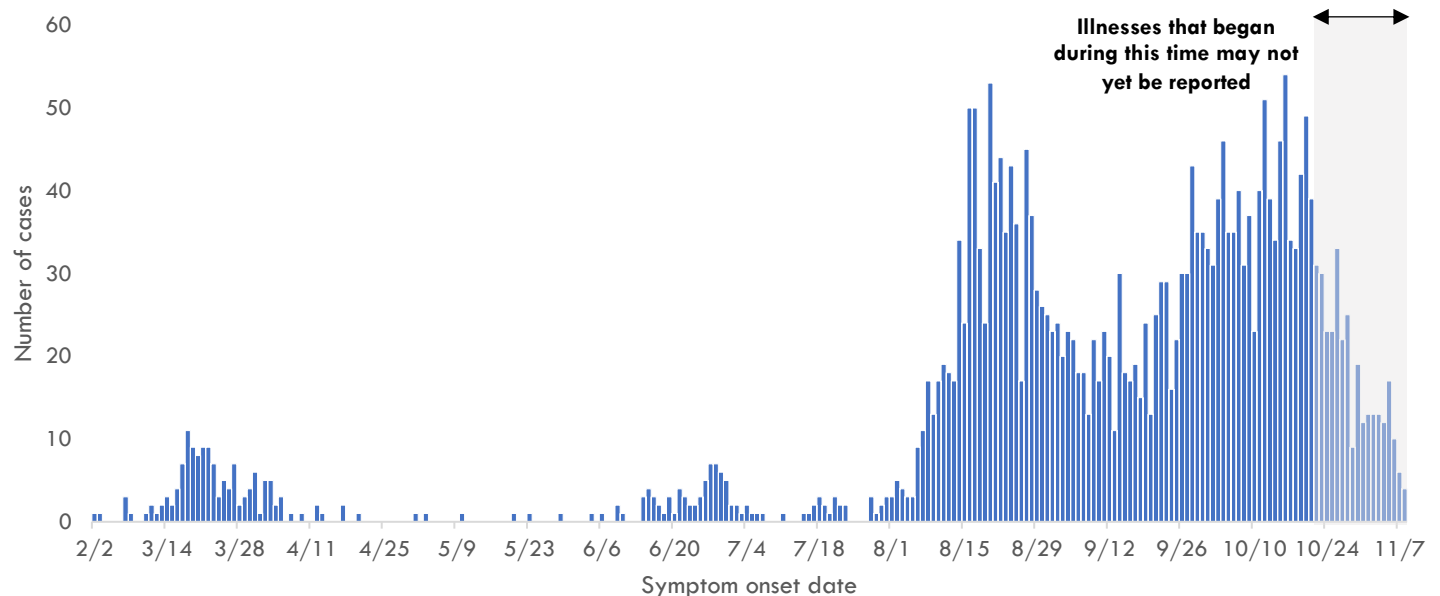
One hundred and thirty-five (135) cases were identified through contact tracing. Clusters in congregate living settings were identified. Seven cases reported recent travel from the US and were identified in quarantine. Two hundred and fifty-one (251) cases were reported released from isolation.



COVID-19 Testing on Guam**	Total	New tests reported today	Percent positive
COVID-19 Tests	73,161	1,850	7.5%
Molecular Tests	72,187	1,784	7.5%
Antigen Tests	765	66	12.8%
Serology Tests	209	0	3.3%

**See COVID-19 Testing Breakdown for all testing definitions. New tests reported reflects the number of tests reported to DPHSS since the previous report and does not necessarily indicate the number of samples run in the same time frame.

COVID-19 cases by symptom onset date, Guam





Guam COVID-19 Situation Report - 184

March 12–November 9, 2020

Case Breakdown

Status	Sex	Current isolation location
COVID-19 deaths	Female	Hospital
Cases in active isolation†	Male	Home
Cases not in isolation§	Age Group	Isolation facility
Civilian	0-9	Military
Military service member	10-19	Epi-Link to COVID-19 case**
Travel History¶	20-29	Household contact
US	30-39	Community contact
Dubai	40-49	Workplace contact
Japan	50-59	Healthcare contact
Mexico	60-69	Residence
Philippines	70-79	North
Singapore	80-89	Central
Identified in quarantine	90+	South
		Homeless
		Non-resident

Note: Data for recent cases are preliminary and are updated based on findings from case investigations. Residence under investigation for 258 cases.

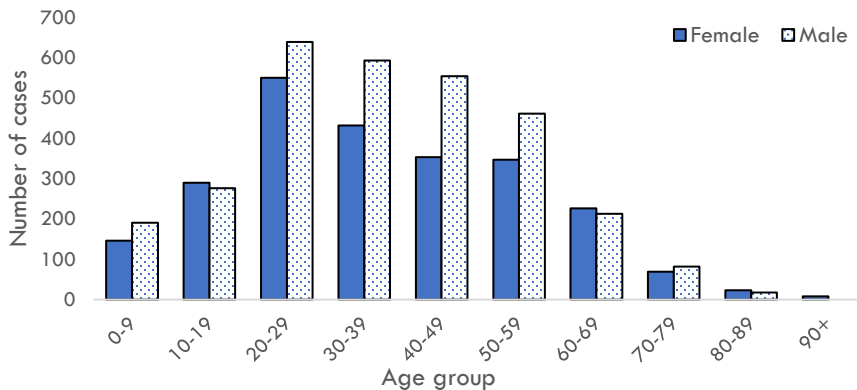
† Cases that test positive for COVID-19 through follow-up molecular testing return to active isolation.

§ Cases not in isolation indicates the number of COVID-19 cases that are no longer in active isolation based on criteria outlined on page 4. Generally, the criteria assess time since COVID-19 symptom resolution and the date of their most recent positive diagnostic test to qualify for release from isolation.

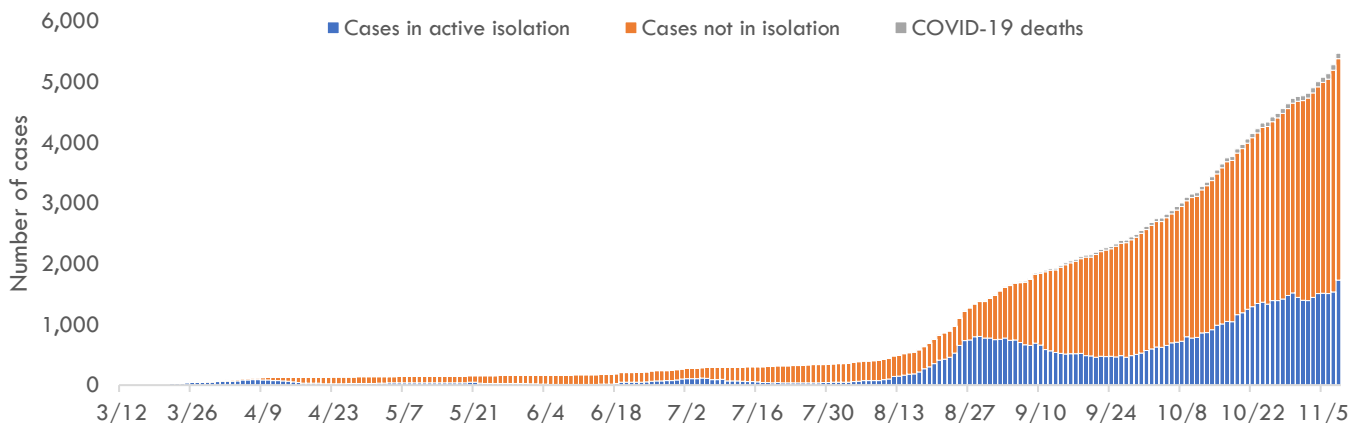
¶ In the 14 days before symptom onset. Some cases traveled to more than one country.

** Some cases have more than one link to other COVID-19 cases.

COVID-19 cases by age group and sex



Number of cases in active isolation, cases not in isolation, and COVID-19 deaths, Guam





Guam COVID-19 Situation Report - 184

March 12–November 9, 2020

COVID-19 TESTING BREAKDOWN

MOLECULAR TESTS	TOTAL	TOTAL POSITIVES*	NEW TESTS	NEW POSITIVES
Guam Public Health Laboratory	38,146	2,924	1,183	334
Diagnostic Laboratory Services	10,207	869	116	10
Department of Defense	9,014	570	139	5
Guam Memorial Hospital Authority	6,411	356	75	7
Guam Regional Medical City	4,775	273	113	4
Private Clinics**	3,617	381	158	17
Guam National Guard Laboratory	17	0	0	0

ANTIGEN TESTS	TOTAL	TOTAL POSITIVES	NEW TESTS	NEW POSITIVES
Private Clinics***	765	98	66	19

SEROLOGY TESTS	TOTAL	TOTAL POSITIVES	NEW TESTS	NEW POSITIVES
Diagnostic Laboratory Services	201	7	0	0
Department of Defense	8	0	0	0

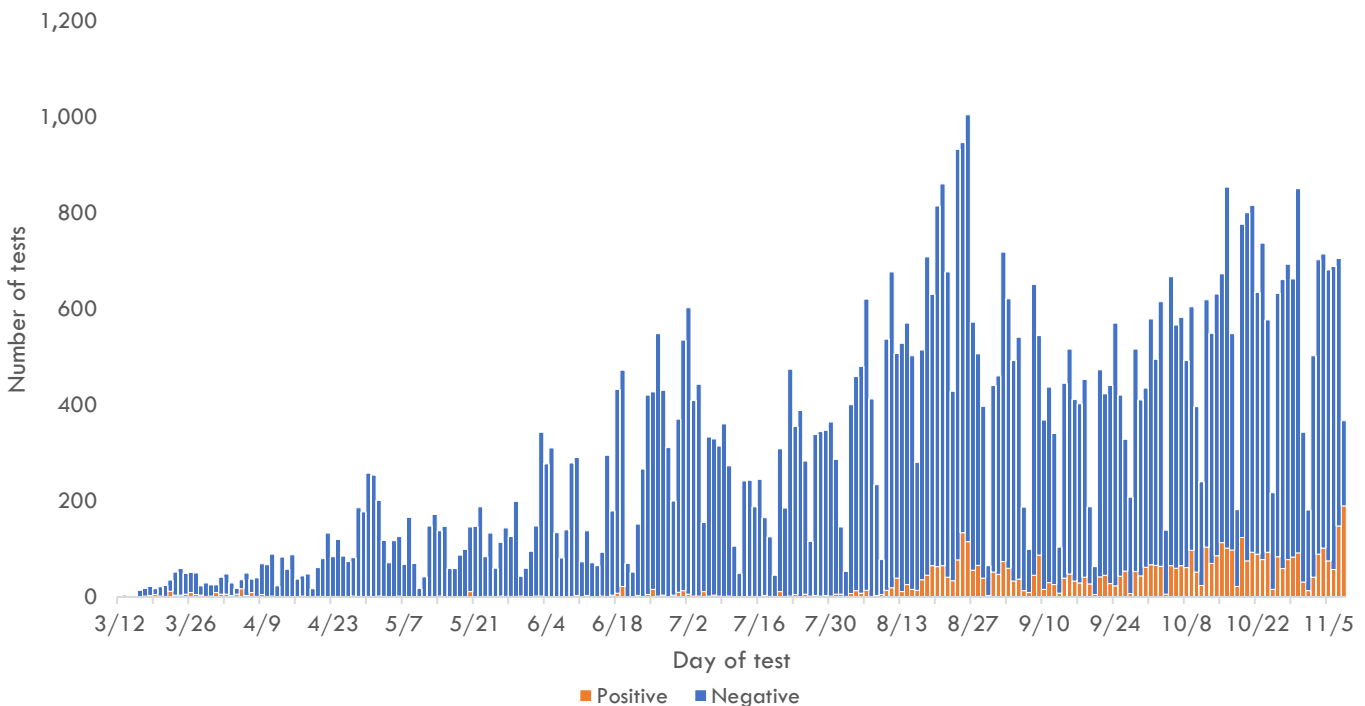
Total tests is defined as the number of tests with conclusive results not including follow-up testing for known COVID-19 cases. New tests reported today is defined as the total tests reported to DPHSS since the last Situation Report. Percent positive is defined as number of people with a positive test result, out of all people with COVID-19 testing. Total positives is defined as the number of people with a positive test result.

*Two additional confirmed cases tested positive through molecular testing at an out-of-state laboratory.

**Clinics included: American Medical Center, Guam Medical Care, Guam Radiology Consultants, and One Love Pediatrics.

***Clinics included: Central Medical Clinic, ExpressCare, IHP Medical Group and Guam Medical Care.

COVID-19 testing by day of test, Guam



CONTACT INVESTIGATIONS	TOTAL	11/8/20
Contacts identified by DPHSS	10,963	77
Contacts notified by DPHSS	5,205	24
Contacts tested by DPHSS	3,868	19
Cases identified through contact tracing	1,709	135

Note: Data for recent cases are preliminary and are updated based on findings from case investigations.

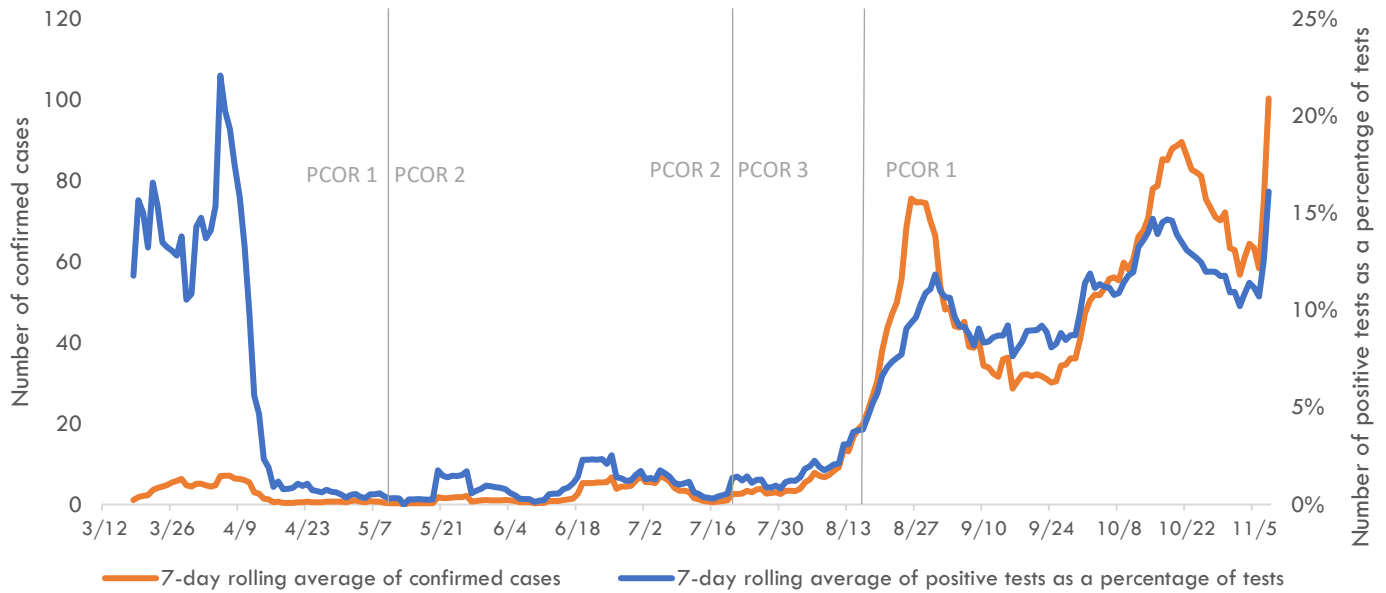


Guam COVID-19 Situation Report - 184

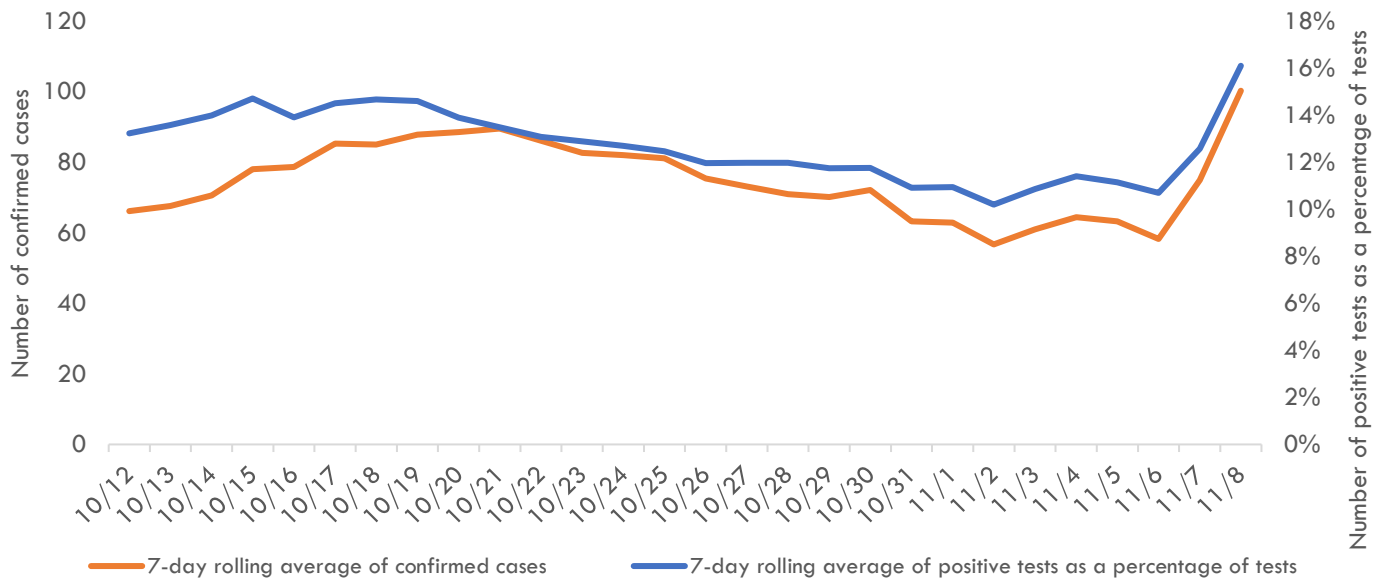
March 12–November 9, 2020

Pandemic Condition of Readiness Assessment

Triggers for PCOR - Cases, March 12–November 8, 2020



Triggers for PCOR - Cases, Previous 28 days



† Criteria for release from isolation

For persons with mild to moderate illness who are not severely immunocompromised:

For persons having symptoms: At least 3 days have passed since recovery defined as resolution of fever without the use of fever-reducing medications and improvement in respiratory symptoms (e.g., cough, shortness of breath) and any other symptoms attributed to COVID-19 AND at least 10 days have passed since symptoms first appeared—or since recurrent symptoms appeared—AND at least 10 days have passed since the date of their first (or most recent) positive COVID-19 diagnostic test.

For persons without symptoms: At least 10 days have passed since the date of their first (or most recent) positive COVID-19 diagnostic test assuming they have not subsequently developed symptoms since their positive test.

For persons with severe to critical illness or who are severely immunocompromised:

For persons having symptoms: At least 10 days have passed since symptoms first appeared, up to 20 days.

For persons without symptoms: At least 10 days have passed since the date of their first positive COVID-19 diagnostic test, up to 20 days.