



# Guam COVID-19 Situation Report - 186

## March 12–November 12, 2020

COVID-19 Cases  
Primary Reported Residence

COVID-19 Case Count*	Total	Today	Past 7 days
COVID-19 Cases	<b>5,850</b>	<b>196</b>	<b>845</b>
Confirmed cases	5,740	188	808
Probable cases	110	8	37

\*<https://www.cdc.gov/nndss/conditions/coronavirus-disease-2019-covid-19/case-definition/2020/08/05/> - CSTE/CDC COVID-19 case definition (August 5, 2020)

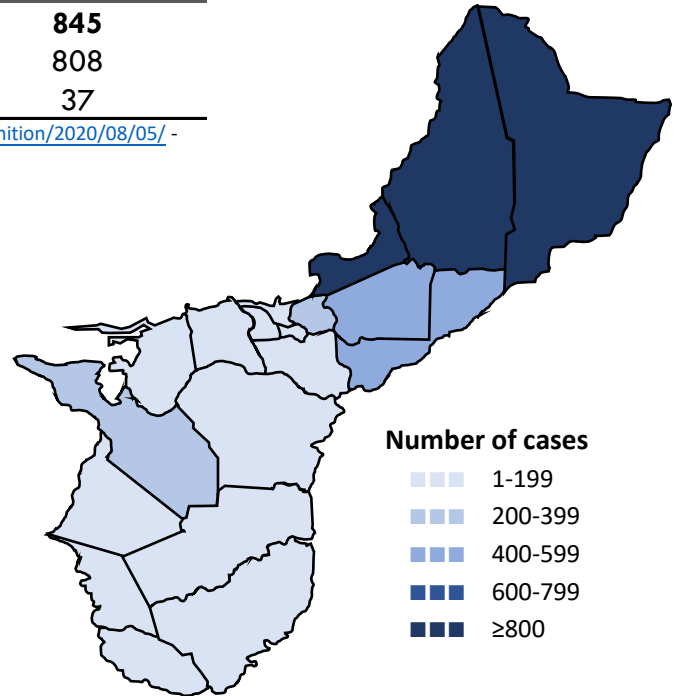
### Summary

As of November 12, 2020, there have been 5,850 cases of COVID-19 reported on Guam. One hundred and ninety-six (196) new cases of COVID-19 were reported to DPHSS from November 10-11: 188 confirmed cases and 8 probable cases. One hundred and forty (140) cases were reported on November 10 and 56 cases were reported on November 11.

New confirmed cases reported today: 134 cases tested positive at GPHL, 13 tested positive at DLS, nine tested positive at AMC, eight tested positive at Guam Medical Care, seven tested positive at GRMC, six tested positive at DoD, six tested positive at Guam Radiology Consultants, and five tested positive at GMHA.

New probable cases reported today: eight cases tested positive by antigen testing: six at IHP and two at ExpressCare.

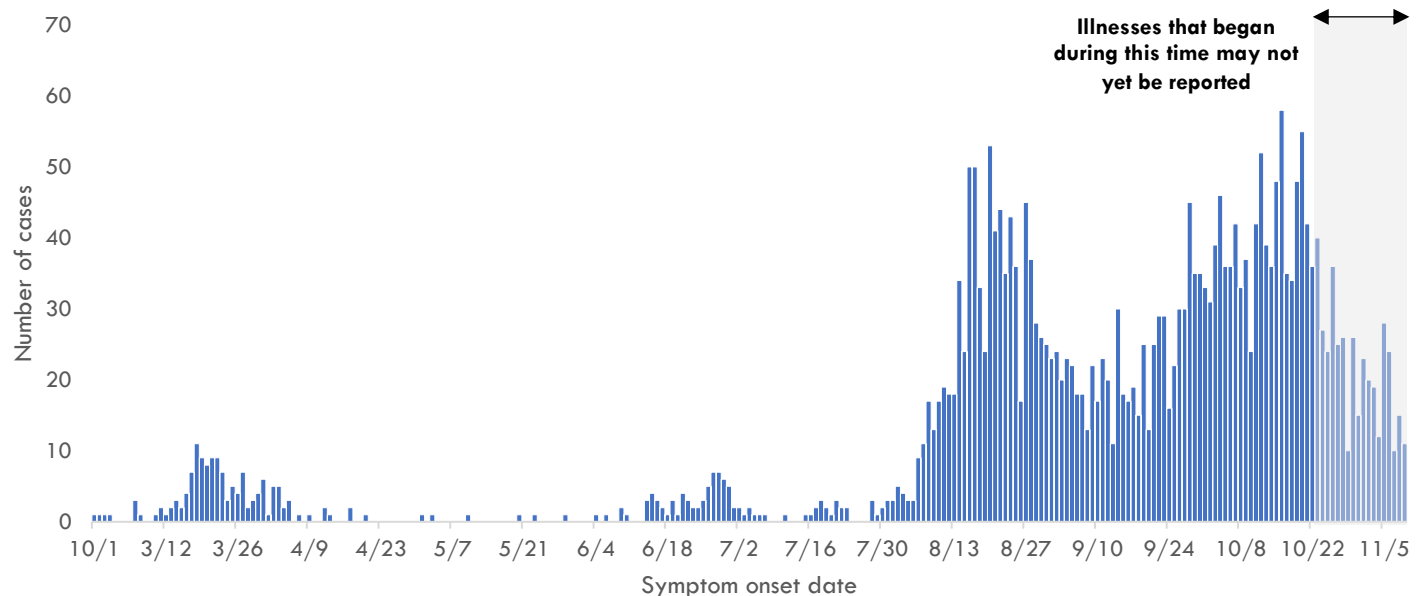
Fifty-eight (58) cases were identified through contact tracing. Five cases reported recent travel from the US and were identified in quarantine. One hundred and ninety-eight (198) cases were reported released from isolation.



COVID-19 Testing on Guam**	Total	New tests reported today	Percent positive
COVID-19 Tests	75,659	1,592	7.7%
Molecular Tests	74,583	1,544	7.7%
Antigen Tests	864	46	12.4%
Serology Tests	212	2	3.8%

\*\*See COVID-19 Testing Breakdown for all testing definitions. New tests reported reflects the number of tests reported to DPHSS since the previous report and does not necessarily indicate the number of samples run in the same time frame.

### COVID-19 cases by symptom onset date, Guam





# Guam COVID-19 Situation Report - 186

## March 12–November 12, 2020

### Case Breakdown

Status	Sex	Current isolation location
COVID-19 deaths	Female	Hospital
Cases in active isolation†	Male	Home
Cases not in isolation‡	<b>Age Group</b>	Isolation facility
Civilian	0-9	Military
Military service member	10-19	<b>Epi-Link to COVID-19 case**</b>
<b>Travel History</b> ¶	20-29	Household contact
US	30-39	Community contact
Dubai	40-49	Workplace contact
Japan	50-59	Healthcare contact
Mexico	60-69	<b>Residence</b>
Philippines	70-79	North
Singapore	80-89	Central
<b>Identified in quarantine</b>	90+	South
		Homeless
		Non-resident

Note: Data for recent cases are preliminary and are updated based on findings from case investigations. Residence under investigation for 252 cases.

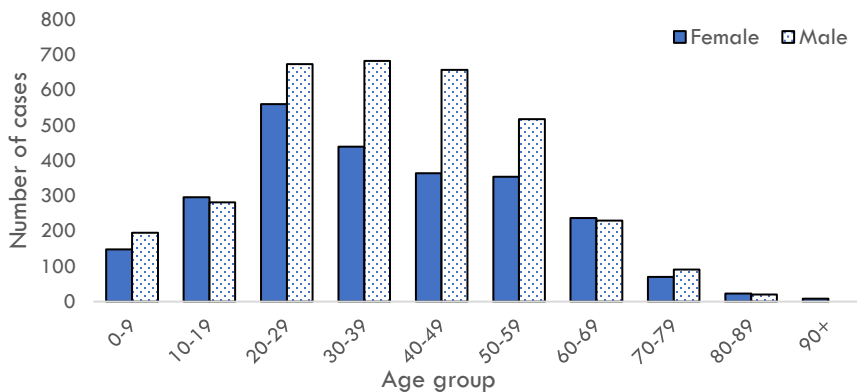
† Cases that test positive for COVID-19 through follow-up molecular testing return to active isolation.

‡ Cases not in isolation indicates the number of COVID-19 cases that are no longer in active isolation based on criteria outlined on page 4. Generally, the criteria assess time since COVID-19 symptom resolution and the date of their most recent positive diagnostic test to qualify for release from isolation.

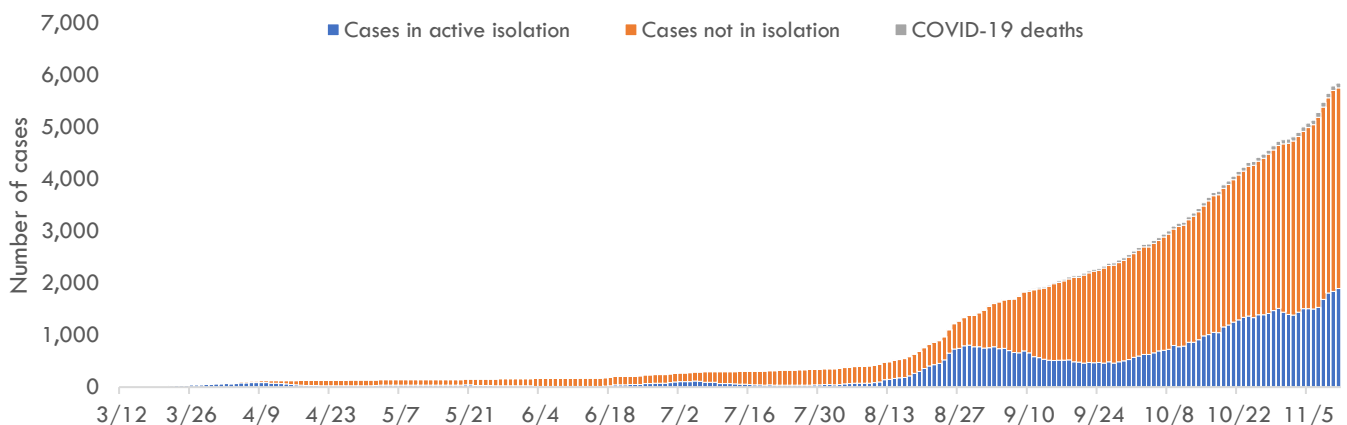
¶ In the 14 days before symptom onset. Some cases traveled to more than one country.

\*\* Some cases have more than one link to other COVID-19 cases.

### COVID-19 cases by age group and sex



### Number of cases in active isolation, cases not in isolation, and COVID-19 deaths, Guam





# Guam COVID-19 Situation Report - 186

## March 12–November 12, 2020

### COVID-19 TESTING BREAKDOWN

MOLECULAR TESTS	TOTAL	TOTAL POSITIVES*	NEW TESTS	NEW POSITIVES
<b>Guam Public Health Laboratory</b>	39,701	3,204	1,006	134
<b>Diagnostic Laboratory Services</b>	10,399	890	127	13
<b>Department of Defense</b>	9,226	577	135	6
<b>Guam Memorial Hospital Authority</b>	6,495	364	46	5
<b>Guam Regional Medical City</b>	4,906	281	105	7
<b>Private Clinics**</b>	3,839	422	125	23
<b>Guam National Guard Laboratory</b>	17	0	0	0
ANTIGEN TESTS	TOTAL	TOTAL POSITIVES	NEW TESTS	NEW POSITIVES
<b>Private Clinics***</b>	864	110	46	8
SEROLOGY TESTS	TOTAL	TOTAL POSITIVES	NEW TESTS	NEW POSITIVES
<b>Diagnostic Laboratory Services</b>	204	8	2	1
<b>Department of Defense</b>	8	0	0	0

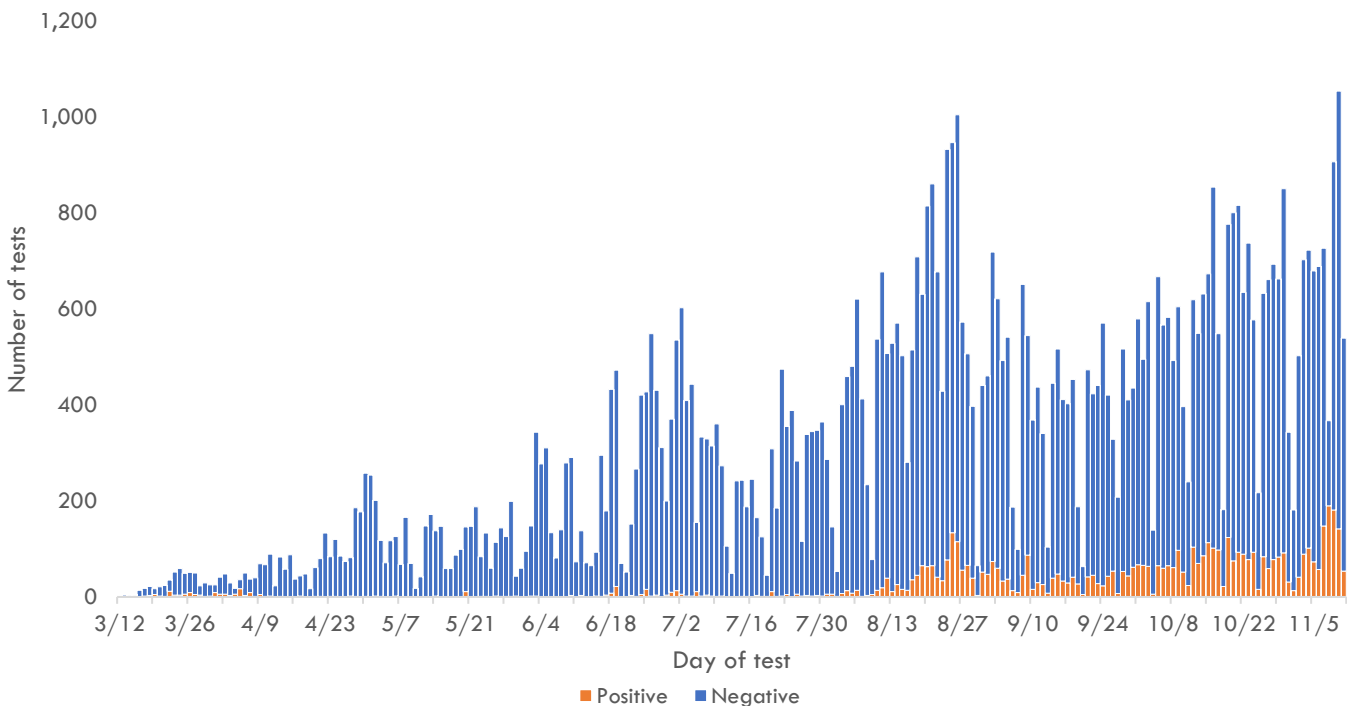
Total tests is defined as the number of tests with conclusive results not including follow-up testing for known COVID-19 cases. New tests reported today is defined as the total tests reported to DPHSS since the last Situation Report. Percent positive is defined as number of people with a positive test result, out of all people with COVID-19 testing. Total positives is defined as the number of people with a positive test result.

\*Two additional confirmed cases tested positive through molecular testing at an out-of-state laboratory.

\*\*Clinics included: American Medical Center, Guam Medical Care, Guam Radiology Consultants, and One Love Pediatrics.

\*\*\*Clinics included: Central Medical Clinic, ExpressCare, IHP Medical Group and Guam Medical Care.

### COVID-19 testing by day of test, Guam



CONTACT INVESTIGATIONS	TOTAL	11/11/20
Contacts identified by DPHSS	11,124	130
Contacts notified by DPHSS	5,239	0
Contacts tested by DPHSS	3,876	0
Cases identified through contact tracing	1,915	58

*Note: Data for recent cases are preliminary and are updated based on findings from case investigations.*

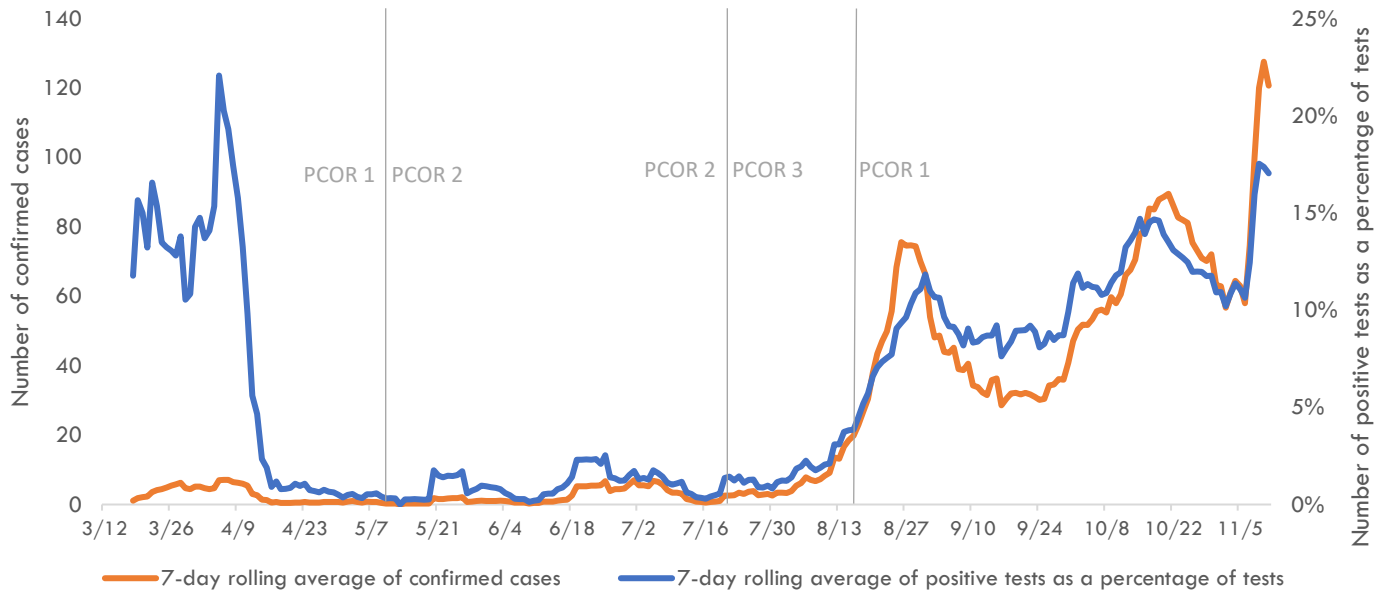


# Guam COVID-19 Situation Report - 186

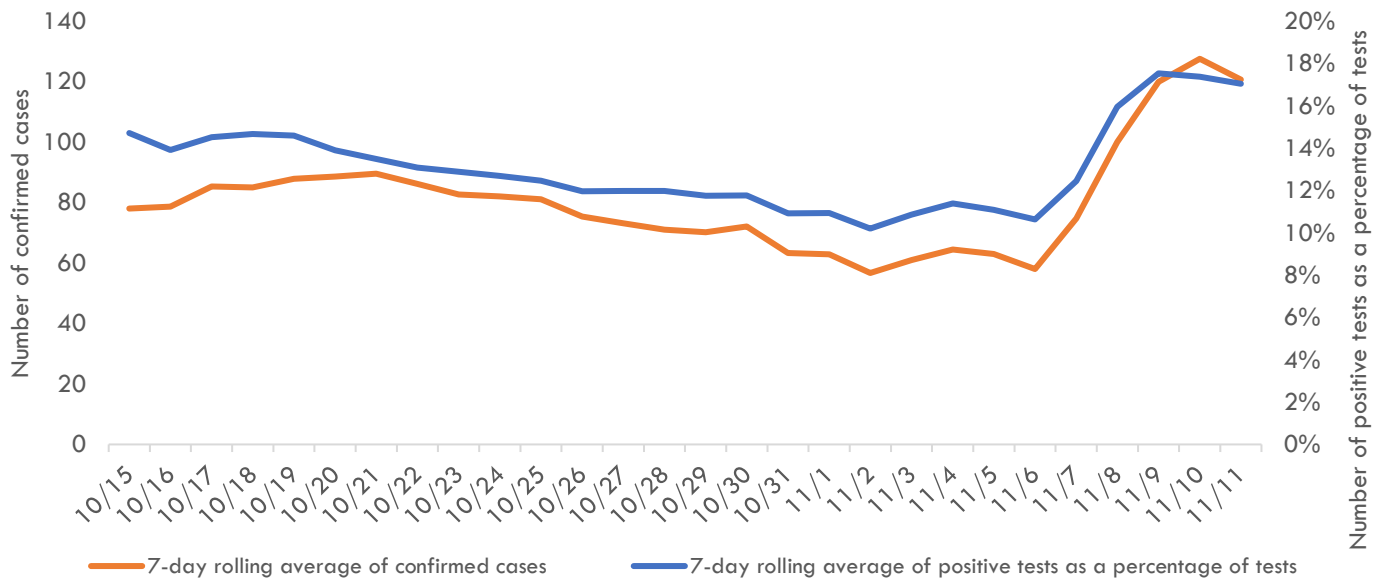
## March 12–November 12, 2020

### Pandemic Condition of Readiness Assessment

Triggers for PCOR - Cases, March 12–November 11, 2020



Triggers for PCOR - Cases, Previous 28 days



#### † Criteria for release from isolation

*For persons with mild to moderate illness who are not severely immunocompromised:*

For persons having symptoms: At least 3 days have passed since recovery defined as resolution of fever without the use of fever-reducing medications and improvement in respiratory symptoms (e.g., cough, shortness of breath) and any other symptoms attributed to COVID-19 AND at least 10 days have passed since symptoms first appeared—or since recurrent symptoms appeared—AND at least 10 days have passed since the date of their first (or most recent) positive COVID-19 diagnostic test.

For persons without symptoms: At least 10 days have passed since the date of their first (or most recent) positive COVID-19 diagnostic test assuming they have not subsequently developed symptoms since their positive test.

*For persons with severe to critical illness or who are severely immunocompromised:*

For persons having symptoms: At least 10 days have passed since symptoms first appeared, up to 20 days.

For persons without symptoms: At least 10 days have passed since the date of their first positive COVID-19 diagnostic test, up to 20 days.