



Guam COVID-19 Situation Report - 187

March 12–November 13, 2020

COVID-19 Cases
Primary Reported Residence

| COVID-19 Case Count* | Total | Today | Past 7 days |
|----------------------|--------------|-----------|-------------|
| COVID-19 Cases | 5,924 | 74 | 846 |
| Confirmed cases | 5,813 | 73 | 815 |
| Probable cases | 111 | 1 | 31 |

*<https://www.cdc.gov/nndss/conditions/coronavirus-disease-2019-covid-19/case-definition/2020/08/05/> - CSTE/CDC COVID-19 case definition (August 5, 2020)

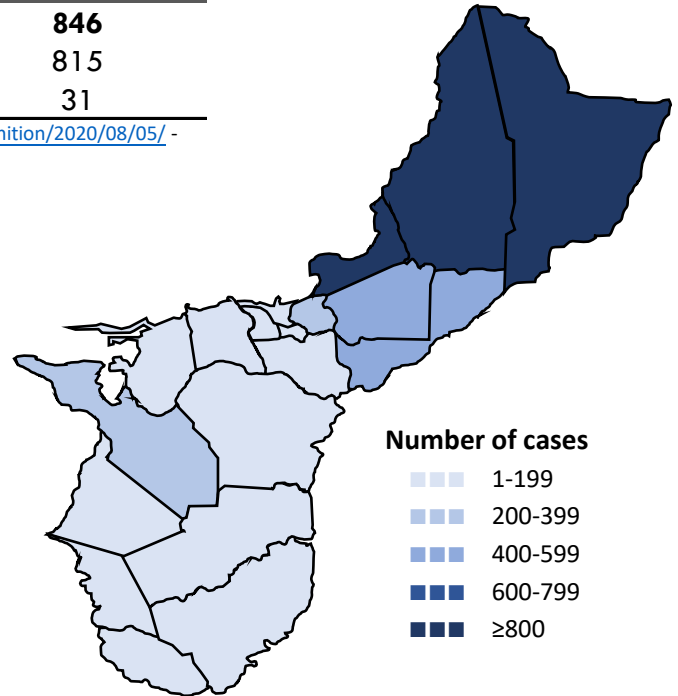
Summary

As of November 13, 2020, there have been 5,924 cases of COVID-19 reported on Guam. Seventy-four (74) new cases of COVID-19 were reported to DPHSS on November 12: 73 confirmed cases and one probable case. One COVID-19 case was reported deceased on 11/13.

New confirmed cases reported today: 44 cases tested positive at GPLH, nine tested positive at Guam Medical Care, six tested positive at DLS, five tested positive at Guam Radiology Consultants, four tested positive at GRMC, two tested positive at AMC, two tested positive at GMHA, and one tested positive at DoD.

New probable cases reported today: one case tested positive by antigen testing at ExpressCare.

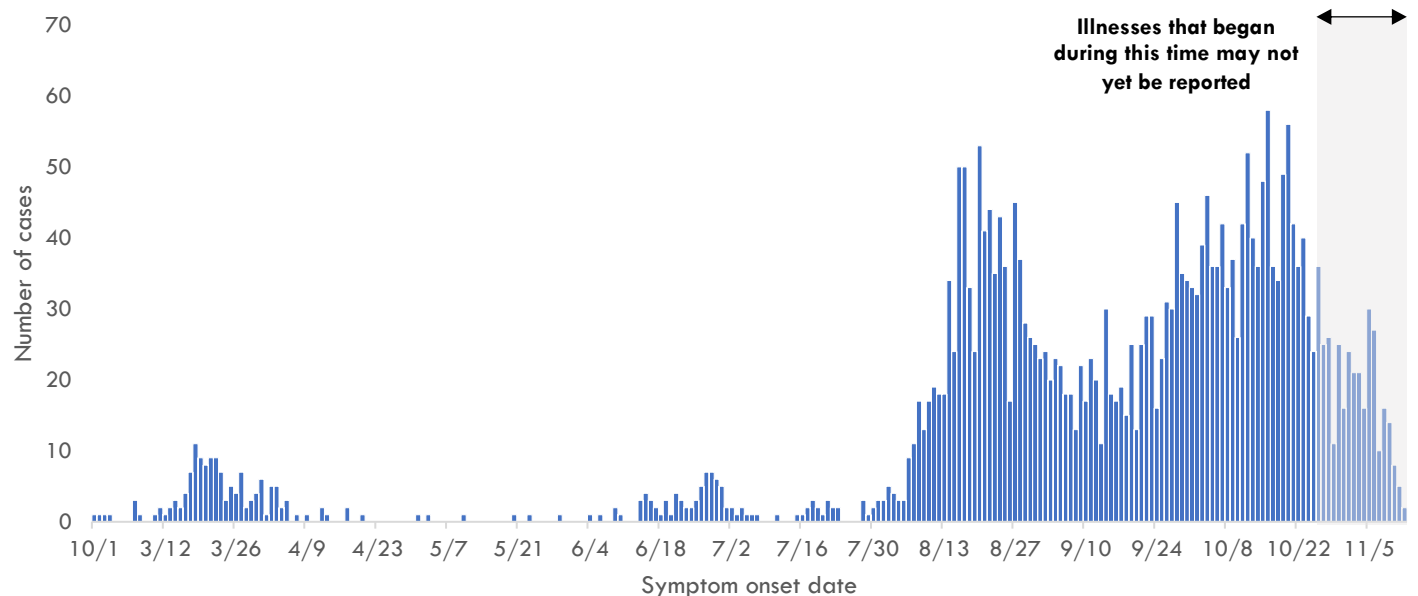
Eight cases were identified through contact tracing. Eight cases reported recent travel from the US and were identified in quarantine. Seventy-seven (77) cases were reported released from isolation.



| COVID-19 Testing on Guam** | Total | New tests reported today | Percent positive |
|----------------------------|--------|--------------------------|------------------|
| COVID-19 Tests | 76,502 | 843 | 7.8% |
| Molecular Tests | 75,406 | 823 | 7.7% |
| Antigen Tests | 884 | 20 | 12.3% |
| Serology Tests | 212 | 0 | 3.8% |

**See COVID-19 Testing Breakdown for all testing definitions. New tests reported reflects the number of tests reported to DPHSS since the previous report and does not necessarily indicate the number of samples run in the same time frame.

COVID-19 cases by symptom onset date, Guam





Guam COVID-19 Situation Report - 187

March 12–November 13, 2020

Case Breakdown

| Status | Sex | Current isolation location |
|---------------------------------|------------------|------------------------------------|
| COVID-19 deaths | Female | Hospital |
| Cases in active isolation† | Male | Home |
| Cases not in isolation‡ | Age Group | Isolation facility |
| Civilian | 0-9 | Military |
| Military service member | 10-19 | Epi-Link to COVID-19 case** |
| Travel History ¶ | 20-29 | Household contact |
| US | 30-39 | Community contact |
| Dubai | 40-49 | Workplace contact |
| Japan | 50-59 | Healthcare contact |
| Mexico | 60-69 | Residence |
| Philippines | 70-79 | North |
| Singapore | 80-89 | Central |
| Identified in quarantine | 90+ | South |
| | | Homeless |
| | | Non-resident |

Note: Data for recent cases are preliminary and are updated based on findings from case investigations. Residence under investigation for 255 cases.

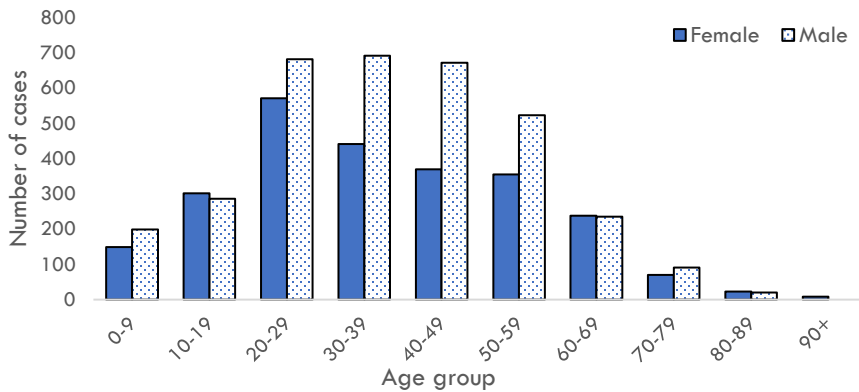
† Cases that test positive for COVID-19 through follow-up molecular testing return to active isolation.

‡ Cases not in isolation indicates the number of COVID-19 cases that are no longer in active isolation based on criteria outlined on page 4. Generally, the criteria assess time since COVID-19 symptom resolution and the date of their most recent positive diagnostic test to qualify for release from isolation.

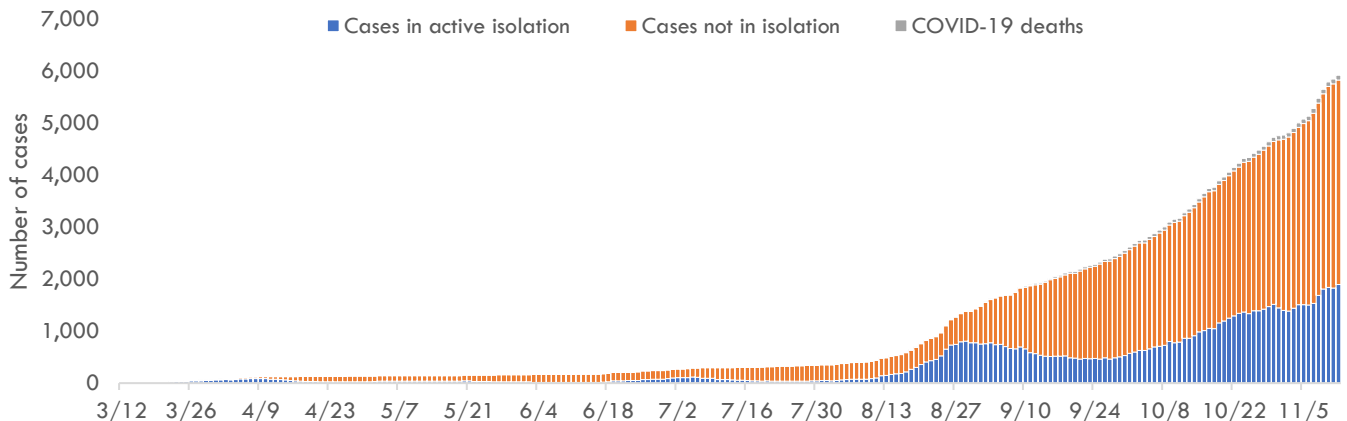
¶ In the 14 days before symptom onset. Some cases traveled to more than one country.

** Some cases have more than one link to other COVID-19 cases.

COVID-19 cases by age group and sex



Number of cases in active isolation, cases not in isolation, and COVID-19 deaths, Guam





Guam COVID-19 Situation Report - 187

March 12–November 13, 2020

COVID-19 TESTING BREAKDOWN

| MOLECULAR TESTS | TOTAL | TOTAL POSITIVES* | NEW TESTS | NEW POSITIVES |
|---|--------|------------------|-----------|---------------|
| Guam Public Health Laboratory | 40,233 | 3,248 | 532 | 44 |
| Diagnostic Laboratory Services | 10,445 | 896 | 46 | 6 |
| Department of Defense | 9,282 | 578 | 56 | 1 |
| Guam Memorial Hospital Authority | 6,530 | 366 | 35 | 2 |
| Guam Regional Medical City | 4,946 | 285 | 40 | 4 |
| Private Clinics** | 3,953 | 438 | 114 | 16 |
| Guam National Guard Laboratory | 17 | 0 | 0 | 0 |

| ANTIGEN TESTS | TOTAL | TOTAL POSITIVES | NEW TESTS | NEW POSITIVES |
|---------------------------|-------|-----------------|-----------|---------------|
| Private Clinics*** | 884 | 111 | 20 | 1 |

| SEROLOGY TESTS | TOTAL | TOTAL POSITIVES | NEW TESTS | NEW POSITIVES |
|---------------------------------------|-------|-----------------|-----------|---------------|
| Diagnostic Laboratory Services | 204 | 8 | 0 | 0 |
| Department of Defense | 8 | 0 | 0 | 0 |

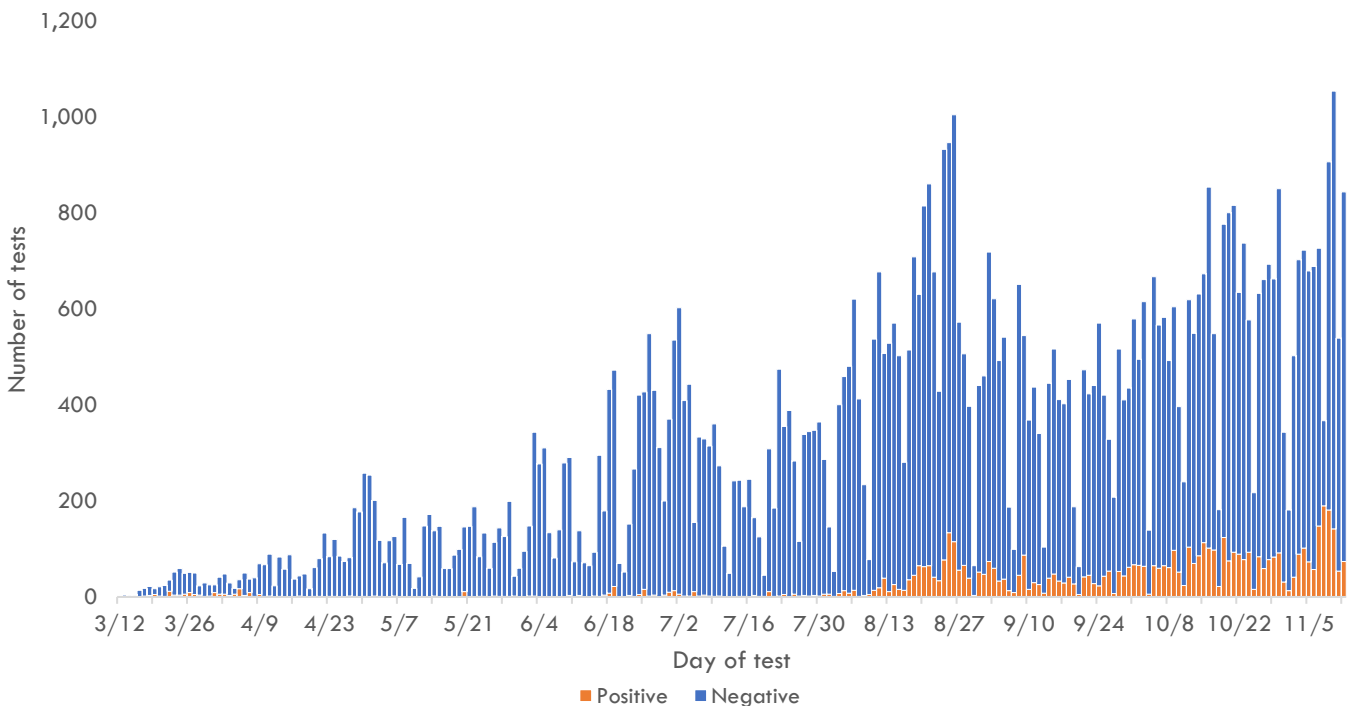
Total tests is defined as the number of tests with conclusive results not including follow-up testing for known COVID-19 cases. New tests reported today is defined as the total tests reported to DPHSS since the last Situation Report. Percent positive is defined as number of people with a positive test result, out of all people with COVID-19 testing. Total positives is defined as the number of people with a positive test result.

*Two additional confirmed cases tested positive through molecular testing at an out-of-state laboratory.

**Clinics included: American Medical Center, Guam Medical Care, Guam Radiology Consultants, and One Love Pediatrics.

***Clinics included: Central Medical Clinic, ExpressCare, IHP Medical Group and Guam Medical Care.

COVID-19 testing by day of test, Guam



| CONTACT INVESTIGATIONS | TOTAL | 11/12/20 |
|--|--------|----------|
| Contacts identified by DPHSS | 11,281 | 157 |
| Contacts notified by DPHSS | 5,310 | 71 |
| Contacts tested by DPHSS | 3,901 | 25 |
| Cases identified through contact tracing | 1,923 | 8 |

Note: Data for recent cases are preliminary and are updated based on findings from case investigations.

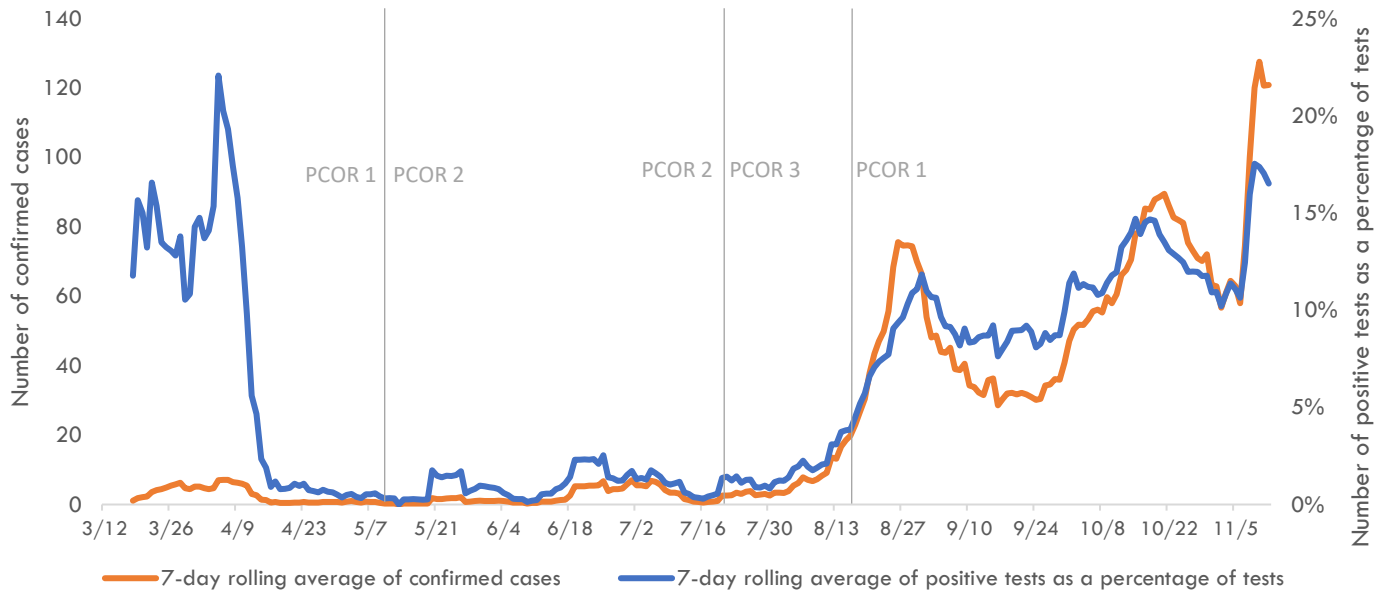


Guam COVID-19 Situation Report - 187

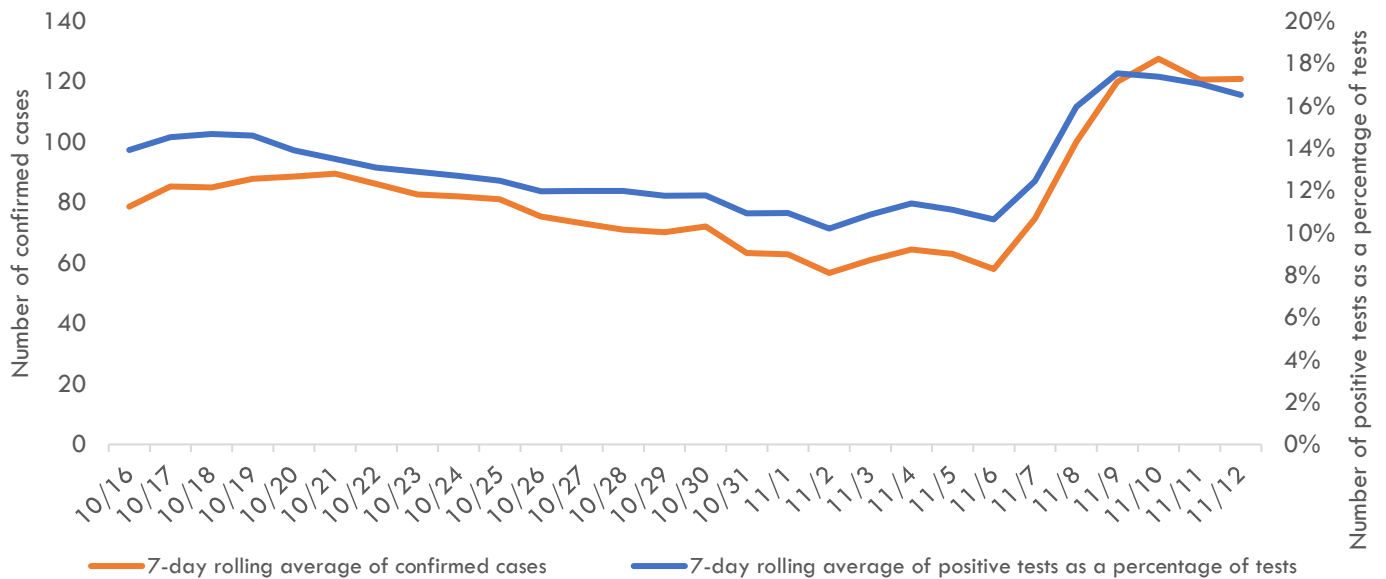
March 12–November 13, 2020

Pandemic Condition of Readiness Assessment

Triggers for PCOR - Cases, March 12–November 12, 2020



Triggers for PCOR - Cases, Previous 28 days



† Criteria for release from isolation

For persons with mild to moderate illness who are not severely immunocompromised:

For persons having symptoms: At least 3 days have passed since recovery defined as resolution of fever without the use of fever-reducing medications and improvement in respiratory symptoms (e.g., cough, shortness of breath) and any other symptoms attributed to COVID-19 AND at least 10 days have passed since symptoms first appeared—or since recurrent symptoms appeared—AND at least 10 days have passed since the date of their first (or most recent) positive COVID-19 diagnostic test.

For persons without symptoms: At least 10 days have passed since the date of their first (or most recent) positive COVID-19 diagnostic test assuming they have not subsequently developed symptoms since their positive test.

For persons with severe to critical illness or who are severely immunocompromised:

For persons having symptoms: At least 10 days have passed since symptoms first appeared, up to 20 days.

For persons without symptoms: At least 10 days have passed since the date of their first positive COVID-19 diagnostic test, up to 20 days.