



# Guam COVID-19 Situation Report - 189

## March 12–November 27, 2020

COVID-19 Cases  
Primary Reported Residence

COVID-19 Case Count*	Total	Past 7 days	% Increase
COVID-19 Cases	<b>6,768</b>	<b>316</b>	<b>4.9%</b>
Confirmed cases	6,641	310	4.9%
Probable cases	127	6	5.0%

\*<https://www.cdc.gov/nndss/conditions/coronavirus-disease-2019-covid-19/case-definition/2020/08/05/> - CSTE/CDC COVID-19 case definition (August 5, 2020)

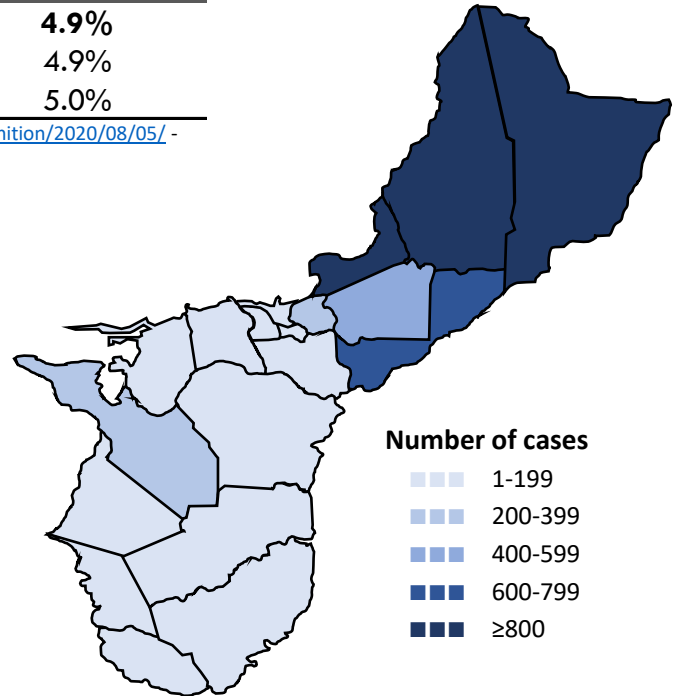
### Summary

As of November 27, 2020, there have been 6,768 cases of COVID-19 reported on Guam. Three hundred and sixteen (316) new cases of COVID-19 were reported to DPHSS from November 20–26: 310 confirmed cases and six probable cases. Nine COVID-19 cases were reported deceased since the last situation report, 112 total.

New confirmed cases reported in the past 7 days: 203 cases tested positive at GPLH, 31 tested positive at DLS, 26 tested positive at Guam Radiology Consultants, 18 tested positive at GMHA, 15 tested positive at GRMC, seven tested positive at DoD, six tested positive at AMC, two tested positive at Guam Medical Care, and two tested positive at One Love Pediatrics.

New probable cases reported in the past 7 days: 6 cases tested positive by antigen testing: 4 at ExpressCare, and 1 each at IHP and GMC.

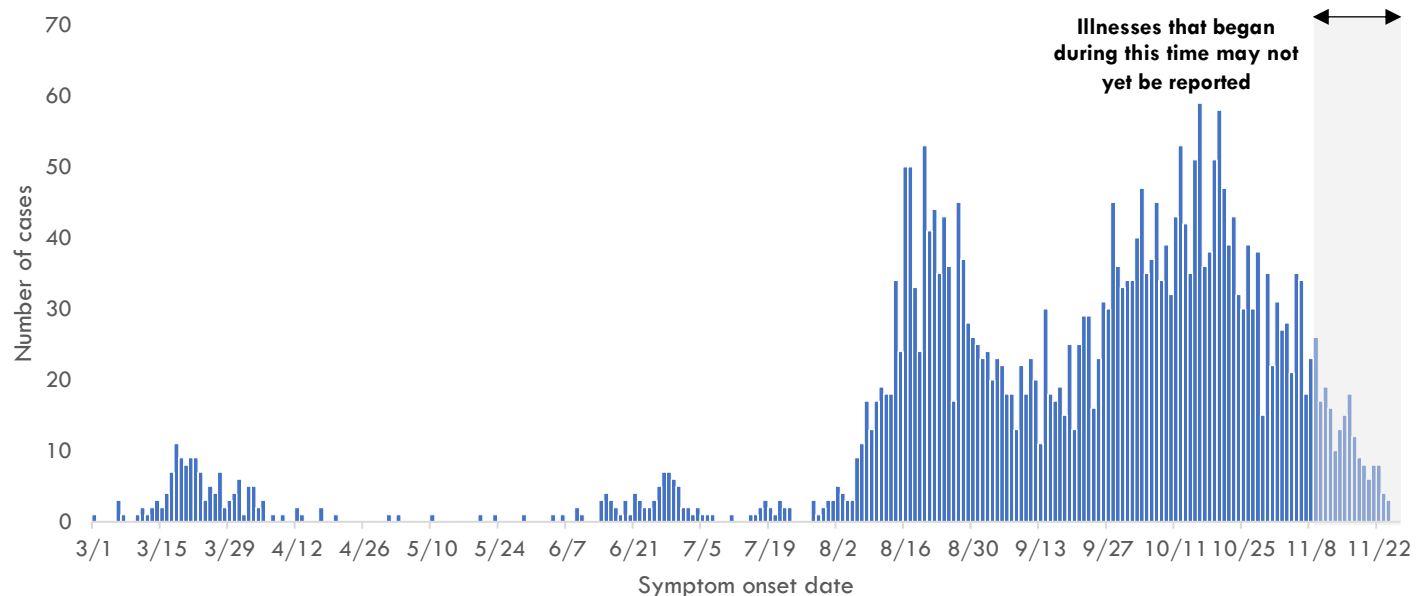
One hundred and sixty-six (166) cases were identified through contact tracing. Six cases reported recent travel from the US and were identified in quarantine. One thousand and ninety-one (1,091) cases were reported released from isolation.



COVID-19 Testing on Guam**	Total	New tests reported today	Percent positive
COVID-19 Tests	84,563	3,529	8.0%
Molecular Tests	83,074	3,407	8.0%
Antigen Tests	1,264	113	9.8%
Serology Tests	225	9	5.3%

\*\*See COVID-19 Testing Breakdown for all testing definitions. New tests reported reflects the number of tests reported to DPHSS since the previous report and does not necessarily indicate the number of samples run in the same time frame.

### COVID-19 cases by symptom onset date, Guam





# Guam COVID-19 Situation Report - 189

## March 12–November 27, 2020

### Case Breakdown

Status	Sex	Current isolation location
COVID-19 deaths	Female	Hospital
Cases in active isolation†	Male	Home
Cases not in isolation§	<b>Age Group</b>	Isolation facility
Civilian	0-9	Military
Military service member	10-19	<b>Epi-Link to COVID-19 case**</b>
<b>Travel History¶</b>	20-29	Household contact
US	30-39	Workplace contact
Dubai	40-49	Community contact
Japan	50-59	Healthcare contact
Mexico	60-69	<b>Residence</b>
Philippines	70-79	North
Singapore	80-89	Central
<b>Identified in quarantine</b>	90+	South
		Homeless
		Non-resident

Note: Data for recent cases are preliminary and are updated based on findings from case investigations. Residence unknown for 274 cases.

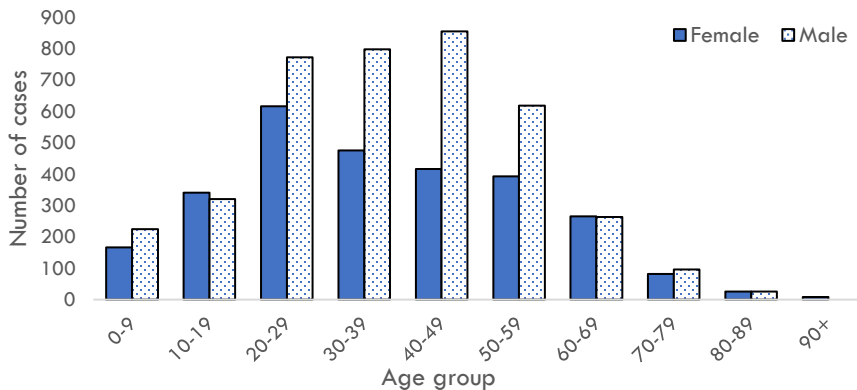
† Cases that test positive for COVID-19 through follow-up molecular testing return to active isolation.

§ Cases not in isolation indicates the number of COVID-19 cases that are no longer in active isolation based on criteria outlined on page 4. Generally, the criteria assess time since COVID-19 symptom resolution and the date of their most recent positive diagnostic test to qualify for release from isolation.

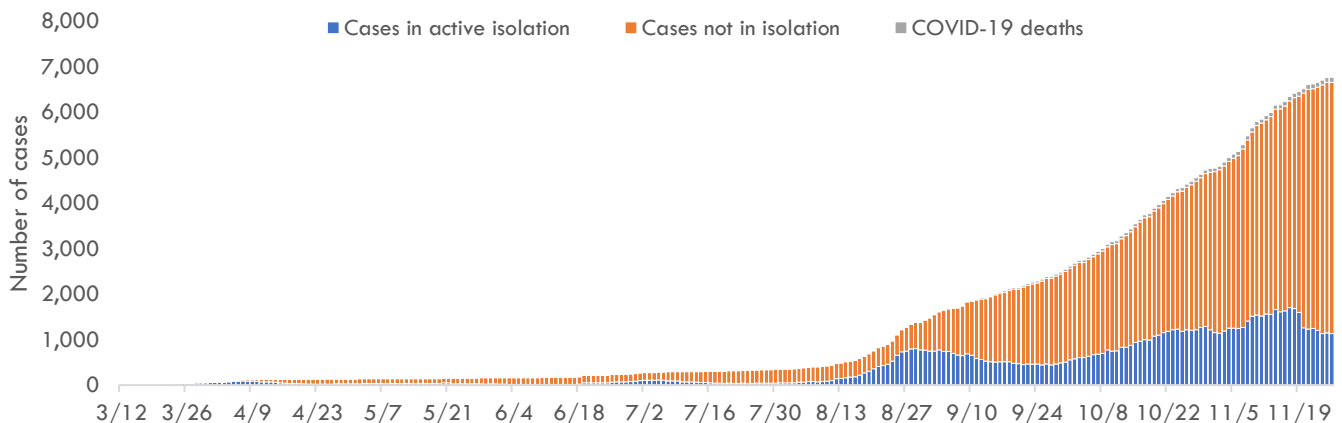
¶ In the 14 days before symptom onset. Some cases traveled to more than one country.

\*\* Some cases have more than one link to other COVID-19 cases.

### COVID-19 cases by age group and sex



### Number of cases in active isolation, cases not in isolation, and COVID-19 deaths, Guam





# Guam COVID-19 Situation Report - 189

## March 12–November 27, 2020

### COVID-19 TESTING BREAKDOWN

MOLECULAR TESTS	TOTAL	TOTAL POSITIVES*	NEW TESTS	NEW POSITIVES
<b>Guam Public Health Laboratory</b>	44,442	3,829	1,562	203
<b>Diagnostic Laboratory Services</b>	11,075	958	313	31
<b>Department of Defense</b>	9,969	599	292	7
<b>Guam Memorial Hospital Authority</b>	7,010	405	246	18
<b>Guam Regional Medical City</b>	5,598	328	524	15
<b>Private Clinics**</b>	4,963	520	470	36
<b>Guam National Guard Laboratory</b>	17	0	0	0
ANTIGEN TESTS	TOTAL	TOTAL POSITIVES	NEW TESTS	NEW POSITIVES
<b>Private Clinics***</b>	1,264	127	113	6
SEROLOGY TESTS	TOTAL	TOTAL POSITIVES	NEW TESTS	NEW POSITIVES
<b>Diagnostic Laboratory Services</b>	216	11	8	2
<b>Department of Defense</b>	9	1	1	1

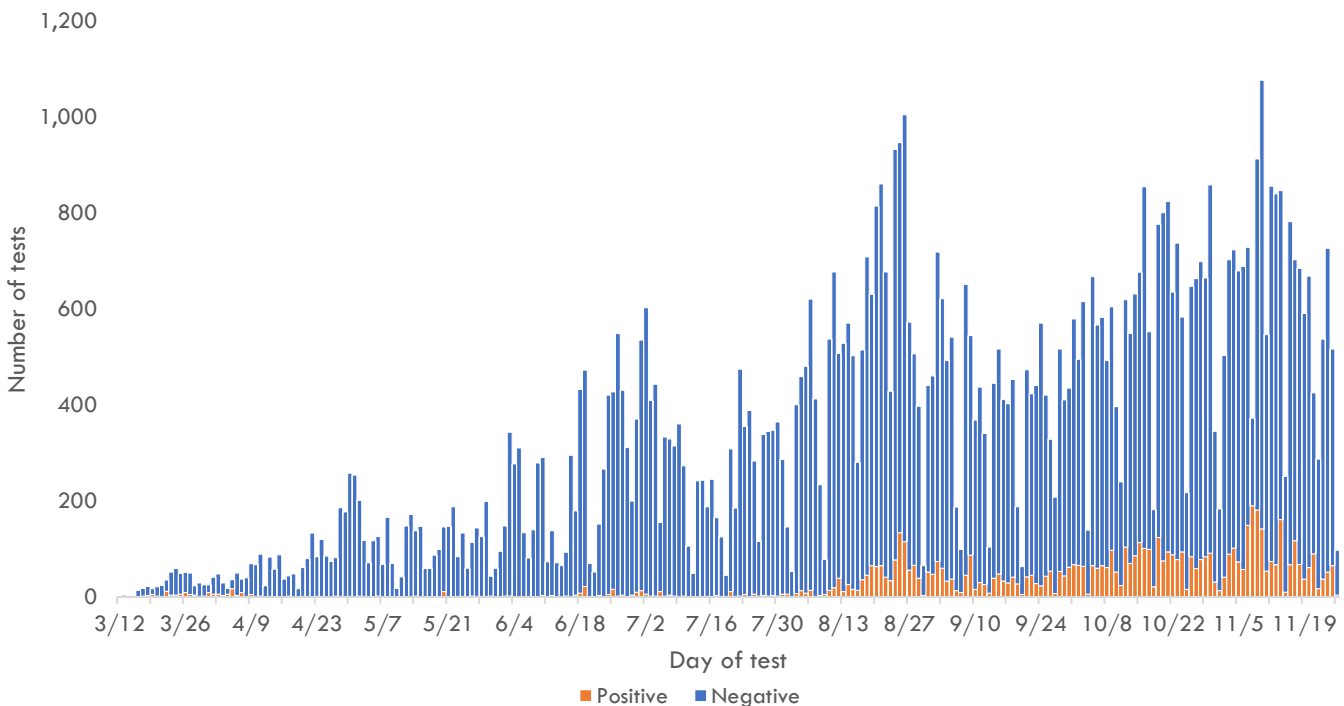
Total tests is defined as the number of tests with conclusive results not including follow-up testing for known COVID-19 cases. New tests reported today is defined as the total tests reported to DPHSS since the last Situation Report. Percent positive is defined as number of people with a positive test result, out of all people with COVID-19 testing. Total positives is defined as the number of people with a positive test result.

\*Two additional confirmed cases tested positive through molecular testing at an out-of-state laboratory.

\*\*Clinics included: American Medical Center, Guam Medical Care, Guam Radiology Consultants, and One Love Pediatrics.

\*\*\*Clinics included: Central Medical Clinic, ExpressCare, IHP Medical Group and Guam Medical Care.

### COVID-19 testing by day of test, Guam



CONTACT INVESTIGATIONS	TOTAL	PAST 7 DAYS
<b>Contacts identified by DPHSS</b>	11,866	142
<b>Contacts notified by DPHSS</b>	5,851	242
<b>Contacts tested by DPHSS</b>	4,056	35
<b>Cases identified through contact tracing</b>	2,495	166

*Note: Data for recent cases are preliminary and are updated based on findings from case investigations.*

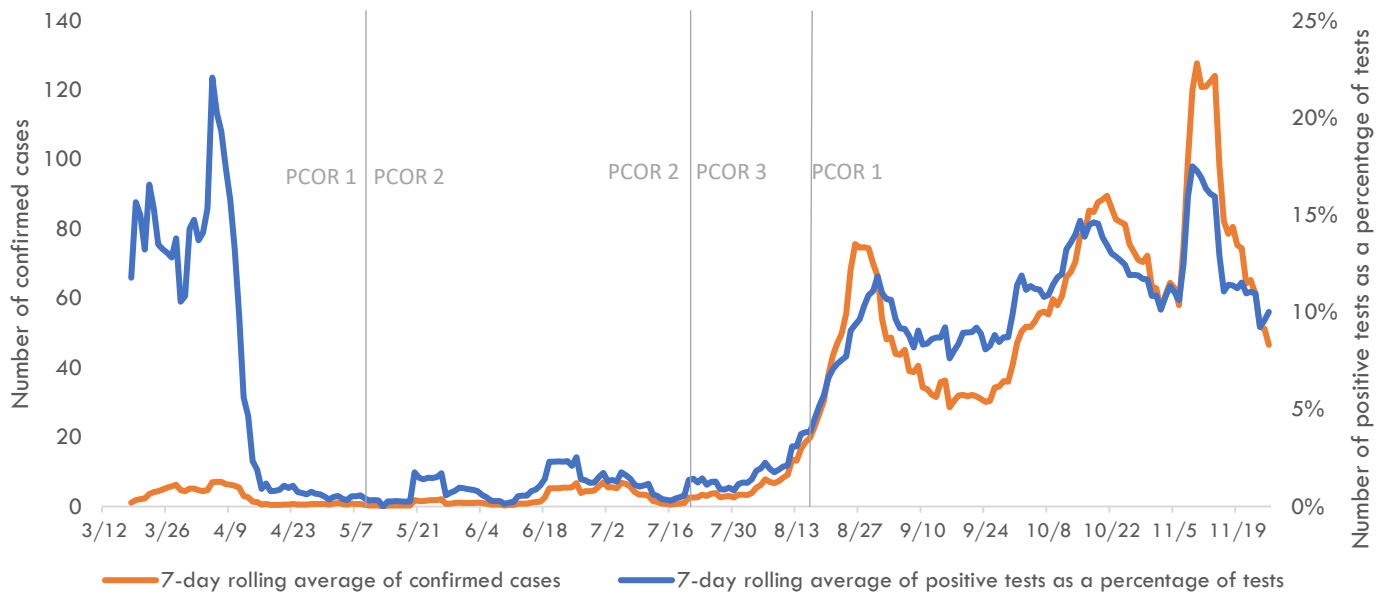


# Guam COVID-19 Situation Report - 189

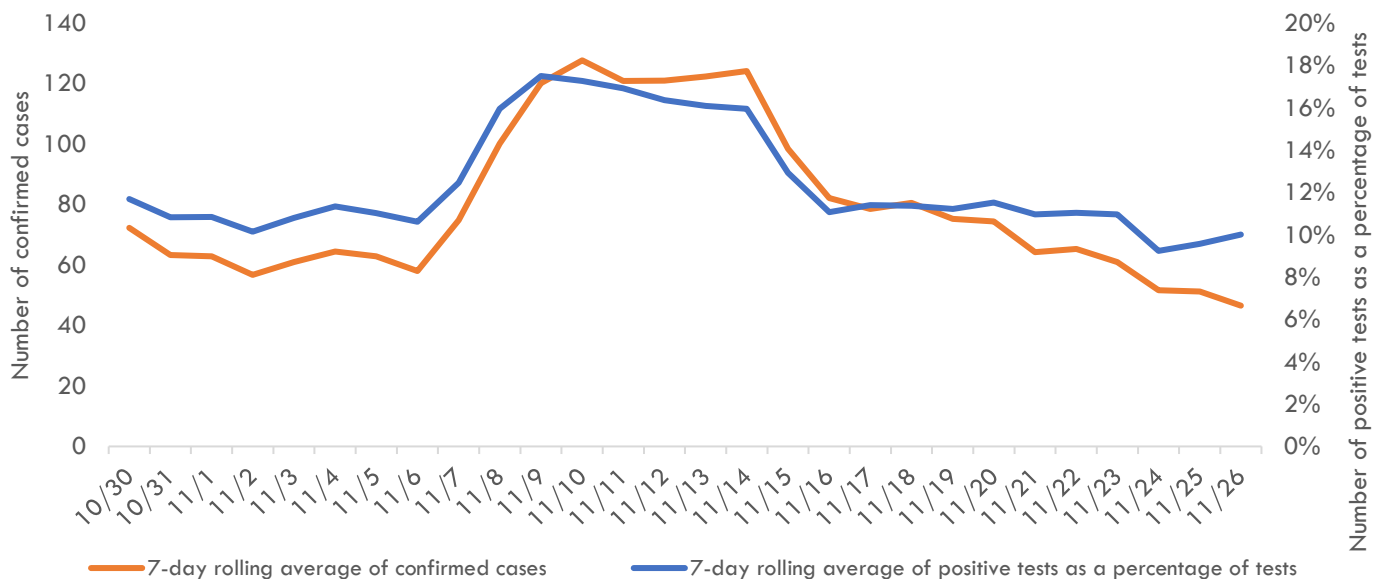
## March 12–November 27, 2020

### Pandemic Condition of Readiness Assessment

Triggers for PCOR - Cases, March 12–November 26, 2020



Triggers for PCOR - Cases, Previous 28 days



#### † Criteria for release from isolation

*For persons with mild to moderate illness who are not severely immunocompromised:*

For persons having symptoms: At least 3 days have passed since recovery defined as resolution of fever without the use of fever-reducing medications and improvement in respiratory symptoms (e.g., cough, shortness of breath) and any other symptoms attributed to COVID-19 AND at least 10 days have passed since symptoms first appeared—or since recurrent symptoms appeared—AND at least 10 days have passed since the date of their first (or most recent) positive COVID-19 diagnostic test.

For persons without symptoms: At least 10 days have passed since the date of their first (or most recent) positive COVID-19 diagnostic test assuming they have not subsequently developed symptoms since their positive test.

*For persons with severe to critical illness or who are severely immunocompromised:*

For persons having symptoms: At least 10 days have passed since symptoms first appeared, up to 20 days.

For persons without symptoms: At least 10 days have passed since the date of their first positive COVID-19 diagnostic test, up to 20 days.