

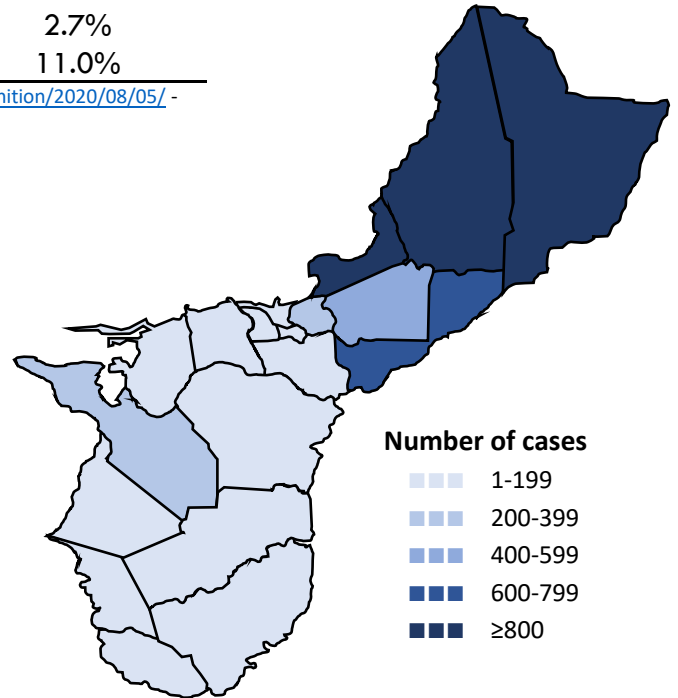


Guam COVID-19 Situation Report - 190

March 12–December 4, 2020

COVID-19 Case Count*	Total	Past 7 days	% Increase
COVID-19 Cases	6,959	191	2.8%
Confirmed cases	6,827	177	2.7%
Probable cases	132	14	11.0%

COVID-19 Cases
Primary Reported Residence



*<https://wwwn.cdc.gov/nndss/conditions/coronavirus-disease-2019-covid-19/case-definition/2020/08/05/> - CSTE/CDC COVID-19 case definition (August 5, 2020)

Summary

As of December 4, 2020, there have been 6,959 cases of COVID-19 reported on Guam. One hundred and ninety-one (191) new cases of COVID-19 were reported to DPHSS from November 27–December 3: 177 confirmed cases and 14 probable cases. Twenty-one (21) probable cases received confirmatory laboratory evidence and have been reclassified as confirmed. One COVID-19 case was reported deceased since the last situation report, 113 total.

Confirmed cases - past 7 days: 177 cases tested positive by molecular testing - 106 at GPLH (94 molecular test only, 12 confirmatory molecular test for antigen positive cases), 13 at DLS, 11 at GMHA, 11 at Guam Radiology Consultants, 11 at GRMC, nine at AMC, nine at DoD, five at Guam Medical Care, one at One Love Pediatrics and one at an off-island laboratory.

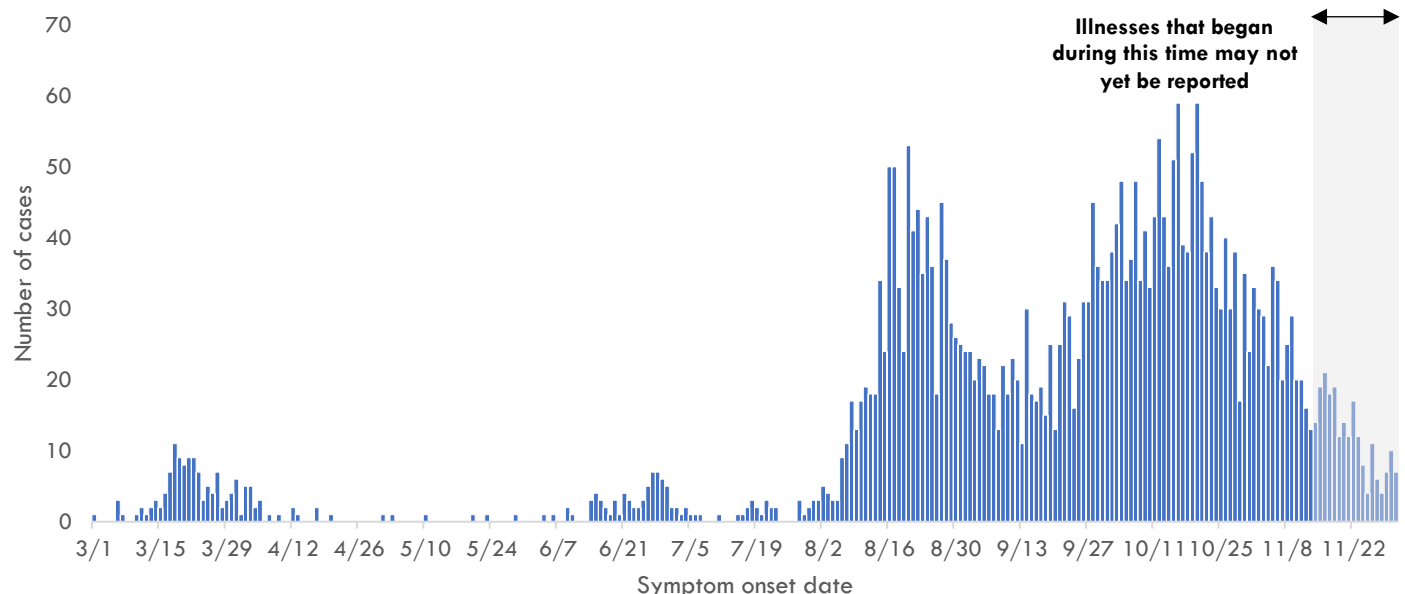
Probable cases - past 7 days: 14 cases tested positive by antigen testing - seven at ExpressCare, six at GPLH and one at AMC.

One hundred and thirty-nine (139) cases were identified through contact tracing. Twelve cases reported recent travel—nine from the US, two from the Philippines and one from Japan—and were identified in quarantine. Five hundred and thirty-five (535) cases were reported released from isolation.

COVID-19 Testing on Guam**	Total	Tests reported past 7 days	% pos. past 7 days***
COVID-19 Tests	89,216	4,653	4.1%
Molecular Tests	86,398	3,324	4.9%
Antigen Tests	2,591	1,327	2.0%
Serology Tests	227	2	0.0%

See COVID-19 Testing Breakdown for all testing definitions. New tests reported reflects the number of tests reported to DPHSS since the previous report and does not necessarily indicate the number of samples run in the same time frame. *7-day rolling average of positive tests as a percentage of tests

COVID-19 cases by symptom onset date, Guam





Guam COVID-19 Situation Report - 190

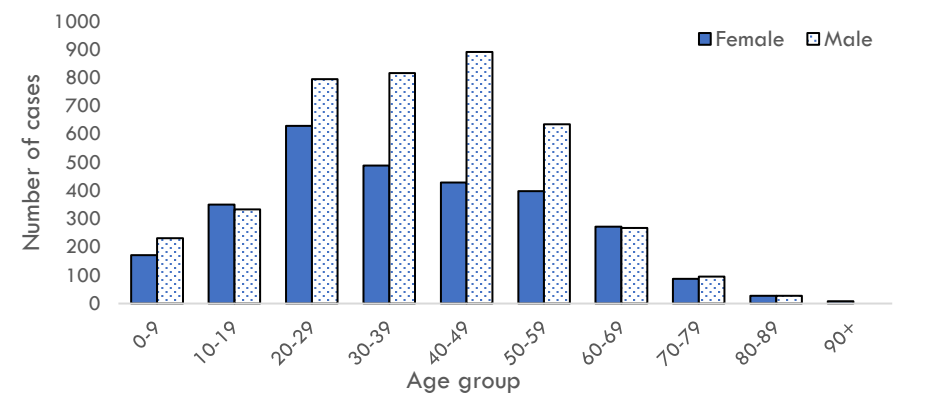
March 12–December 4, 2020

Case Breakdown

Status	Sex	Current isolation location
COVID-19 deaths	Female	Hospital
Cases in active isolation†	Male	Home
Cases not in isolation‡	Age Group	Isolation facility
Civilian	0-9	Military
Military service member	10-19	Epi-Link to COVID-19 case**
Travel History ¶	20-29	Household contact
US	30-39	Workplace contact
Dubai	40-49	Community contact
Japan	50-59	Healthcare contact
Mexico	60-69	Residence
Philippines	70-79	North
Singapore	80-89	Central
Identified in quarantine	90+	South
		Homeless
		Non-resident

Note: Data for recent cases are preliminary and are updated based on findings from case investigations. Residence unknown for 273 cases.

COVID-19 cases by age group and sex



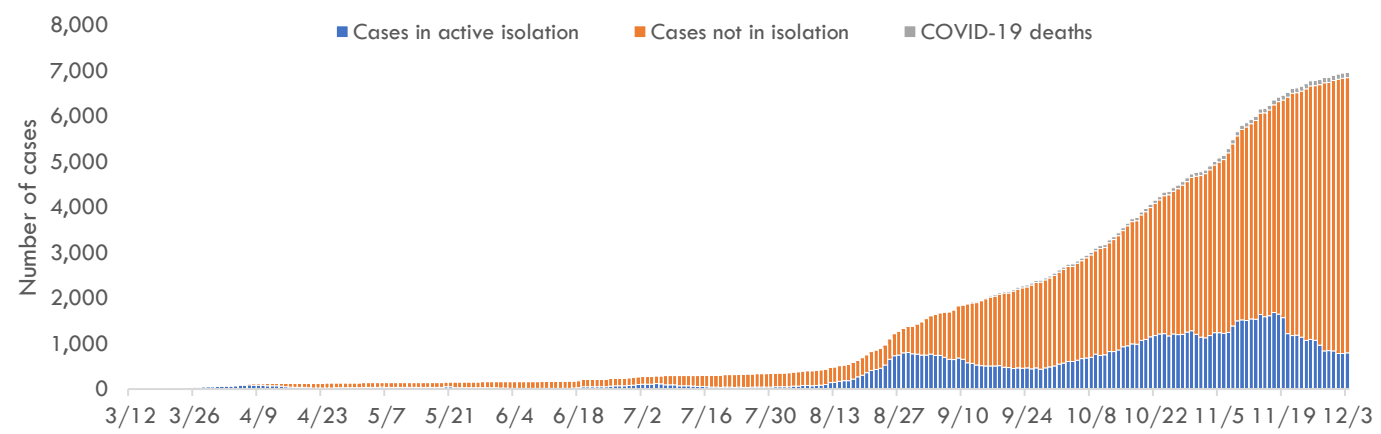
† Cases that test positive for COVID-19 through follow-up molecular testing return to active isolation.

‡ Cases not in isolation indicates the number of COVID-19 cases that are no longer in active isolation based on criteria outlined on page 4. Generally, the criteria assess time since COVID-19 symptom resolution and the date of their most recent positive diagnostic test to qualify for release from isolation.

¶ In the 14 days before symptom onset. Some cases traveled to more than one country.

** Some cases have more than one link to other COVID-19 cases.

Number of cases in active isolation, cases not in isolation, and COVID-19 deaths, Guam





Guam COVID-19 Situation Report - 190

March 12–December 4, 2020

COVID-19 TESTING BREAKDOWN

MOLECULAR TESTS	TOTAL	TOTAL POSITIVES*	NEW TESTS	NEW POSITIVES
Guam Public Health Laboratory	45,789	3,923	1,347	94
Diagnostic Laboratory Services	11,568	971	493	13
Department of Defense	10,569	608	600	9
Guam Memorial Hospital Authority	7,249	416	239	11
Guam Regional Medical City	5,910	339	312	11
Private Clinics**	5,296	546	333	26
Guam National Guard Laboratory	17	0	0	0
ANTIGEN TESTS	TOTAL	TOTAL POSITIVES	NEW TESTS	NEW POSITIVES
Private Clinics***	1,412	135	148	8
Guam Public Health Laboratory	1,179	18	1,179	18
SEROLOGY TESTS	TOTAL	TOTAL POSITIVES	NEW TESTS	NEW POSITIVES
Diagnostic Laboratory Services	218	11	2	0
Department of Defense	9	1	0	0

Total tests is defined as the number of tests with conclusive results not including follow-up testing for known COVID-19 cases. New tests reported today is defined as the total tests reported to DPHSS since the last Situation Report. Percent positive is defined as number of people with a positive test result, out of all people with COVID-19 testing.

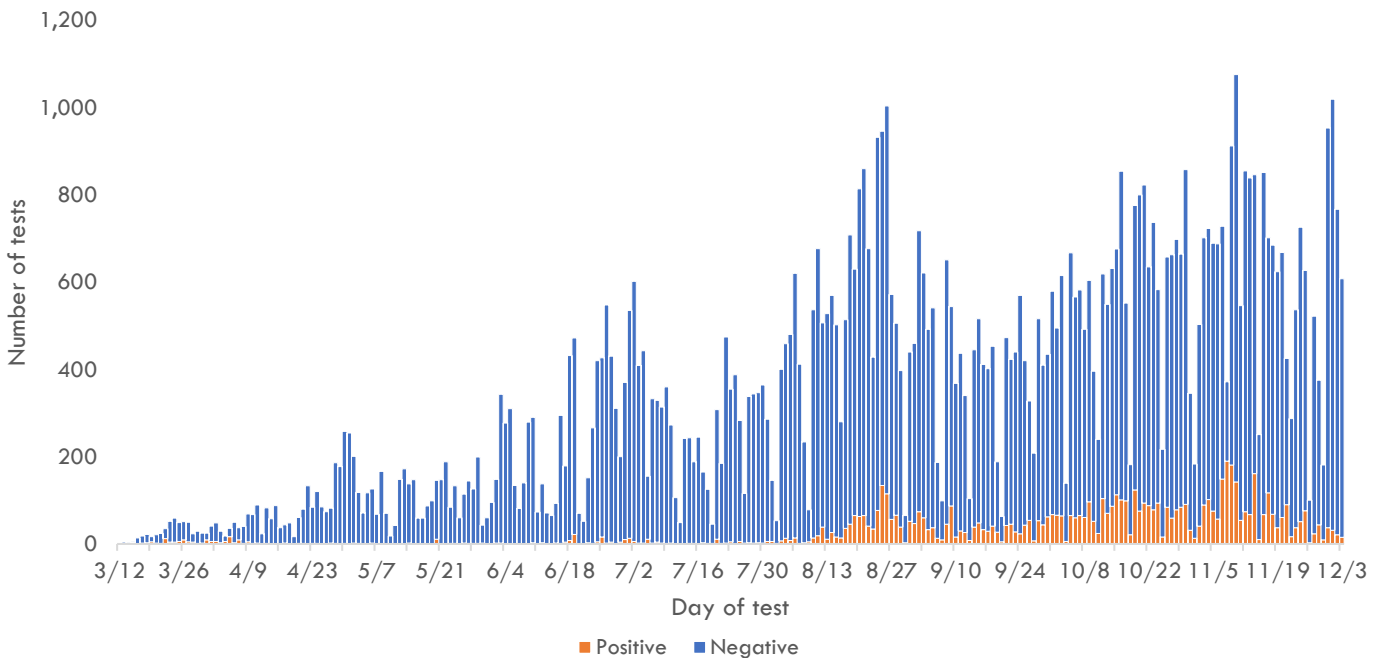
Total positives is defined as the number of people with a positive test result.

*Three additional confirmed cases tested positive through molecular testing at an out-of-state laboratory.

**Clinics included: American Medical Center, Guam Medical Care, Guam Radiology Consultants, and One Love Pediatrics.

***Clinics included: American Medical Center, Central Medical Clinic, ExpressCare, IHP Medical Group and Guam Medical Care.

COVID-19 testing by day of test, Guam



CONTACT INVESTIGATIONS	TOTAL	PAST 7 DAYS
Contacts identified by DPHSS	11,941	75
Contacts notified by DPHSS	5,979	128
Contacts tested by DPHSS	4,084	28
Cases identified through contact tracing	2,634	139

Note: Data for recent cases are preliminary and are updated based on findings from case investigations.

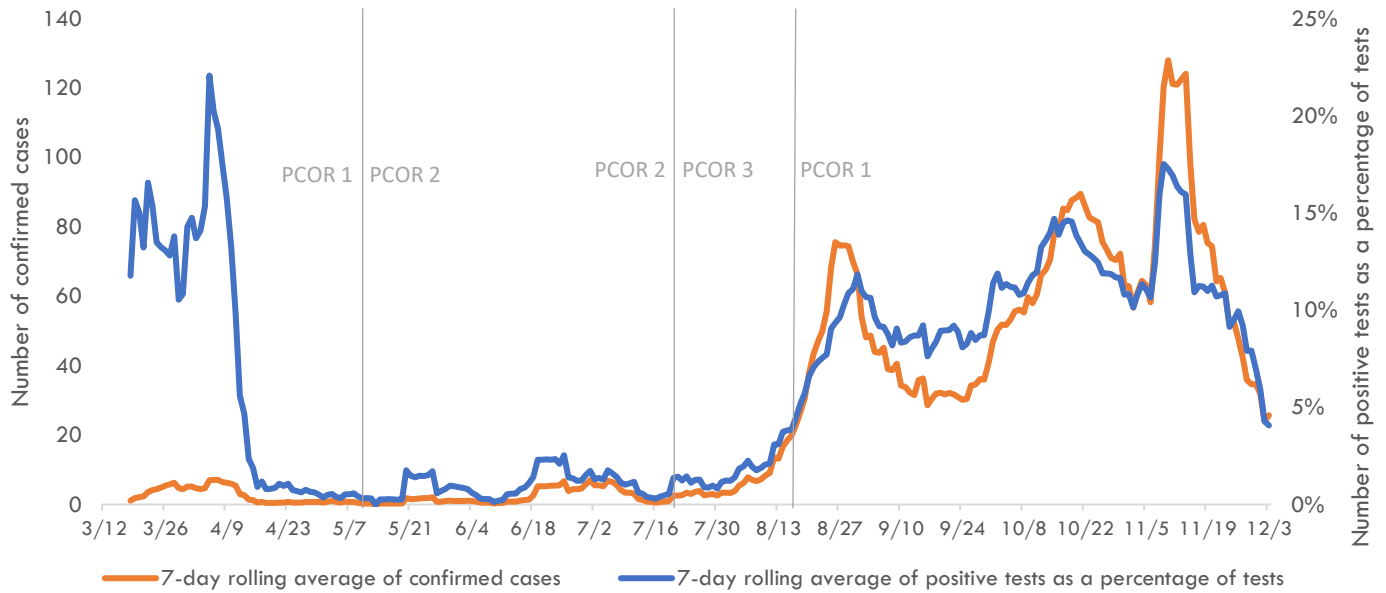


Guam COVID-19 Situation Report - 190

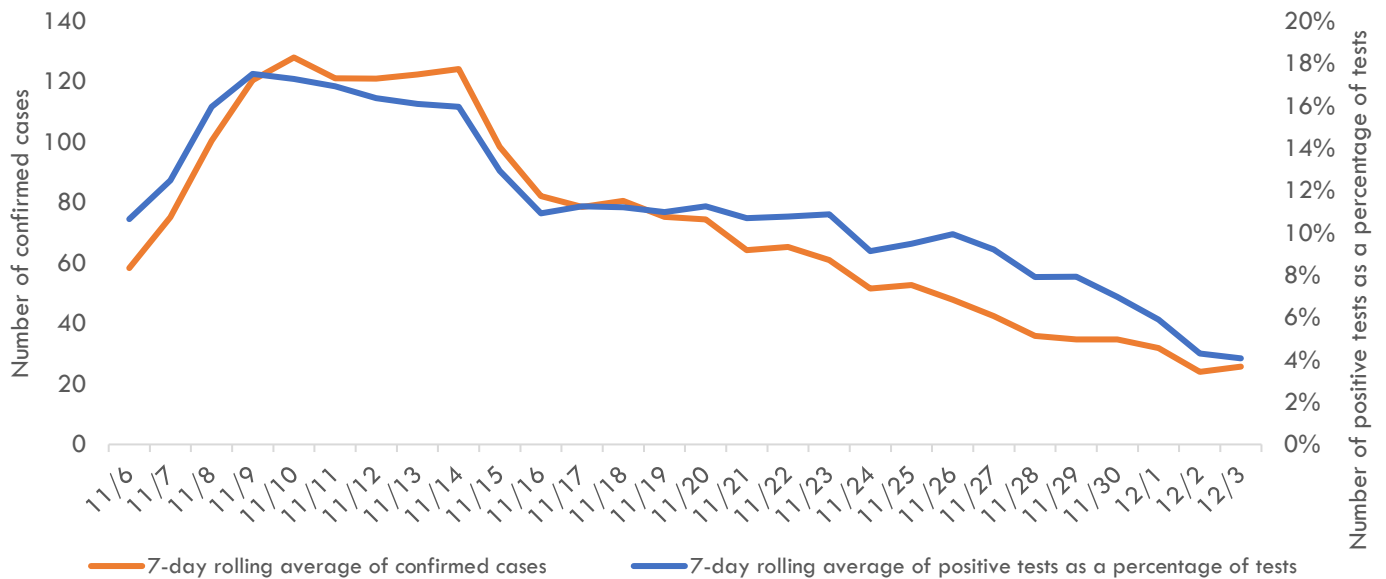
March 12–December 4, 2020

Pandemic Condition of Readiness Assessment

Triggers for PCOR - Cases, March 12–December 3, 2020



Triggers for PCOR - Cases, Previous 28 days



† Criteria for release from isolation

For persons with mild to moderate illness who are not severely immunocompromised:

For persons having symptoms: At least 3 days have passed since recovery defined as resolution of fever without the use of fever-reducing medications and improvement in respiratory symptoms (e.g., cough, shortness of breath) and any other symptoms attributed to COVID-19 AND at least 10 days have passed since symptoms first appeared—or since recurrent symptoms appeared—AND at least 10 days have passed since the date of their first (or most recent) positive COVID-19 diagnostic test.

For persons without symptoms: At least 10 days have passed since the date of their first (or most recent) positive COVID-19 diagnostic test assuming they have not subsequently developed symptoms since their positive test.

For persons with severe to critical illness or who are severely immunocompromised:

For persons having symptoms: At least 10 days have passed since symptoms first appeared, up to 20 days.

For persons without symptoms: At least 10 days have passed since the date of their first positive COVID-19 diagnostic test, up to 20 days.