

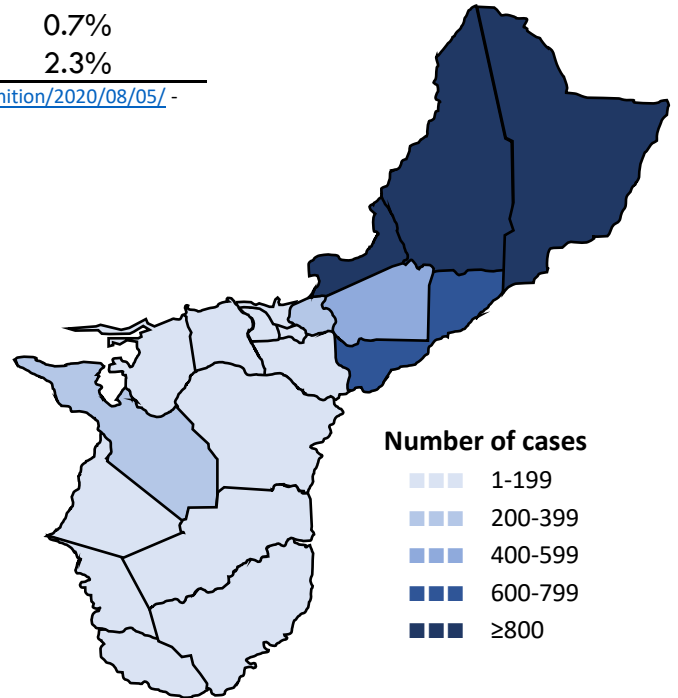


# Guam COVID-19 Situation Report - 193

## March 12–December 31, 2020

COVID-19 Case Count*	Total	Past 7 days	% Increase
COVID-19 Cases	<b>7,317</b>	<b>51</b>	<b>0.7%</b>
Confirmed cases	7,139	47	0.7%
Probable cases	178	4	2.3%

COVID-19 Cases  
Primary Reported Residence



\*<https://wwwn.cdc.gov/nndss/conditions/coronavirus-disease-2019-covid-19/case-definition/2020/08/05/> - CSTE/CDC COVID-19 case definition (August 5, 2020)

### Summary

As of December 31, 2020, there have been 7,317 cases of COVID-19 reported on Guam. Fifty-one (51) new cases of COVID-19 were reported to DPHSS from December 24 – December 30: 47 confirmed cases and four probable cases. One probable case received confirmatory testing. One COVID-19 cases were reported deceased since the last situation report, 122 deaths total.

Confirmed cases - past 7 days: 47 cases tested positive by molecular testing - 34 at GPHL, four at GMHA, three at GRMC, two at Guam Radiology Consultants, two at DoD, two at DLS.

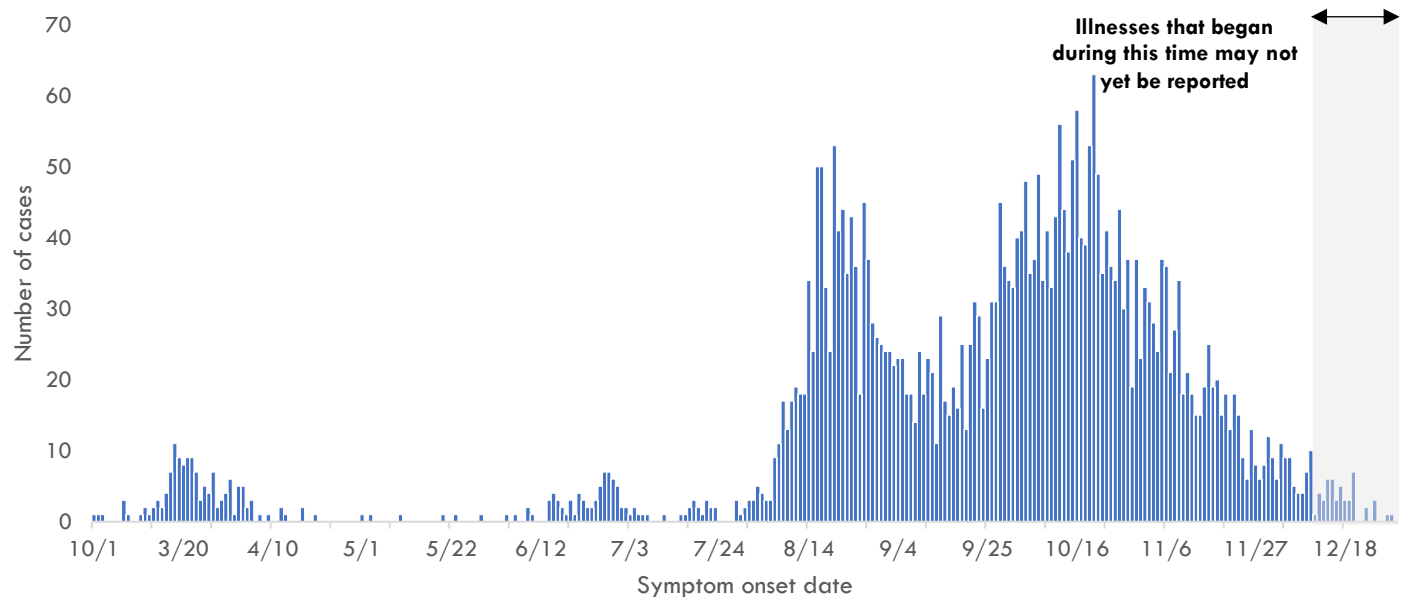
Probable cases - past 6 days: 4 cases tested positive by antigen testing - four at ExpressCare.

Forty-eight (48) cases were identified through contact tracing. Three cases reported recent travel—three from the US—and were identified in quarantine. Three-hundred four (304) cases were reported released from isolation. Happy New Years from the Surveillance Team!

COVID-19 Testing on Guam**	Total	Tests reported past 7 days	% pos. past 7 days***
COVID-19 Tests	101,979	1,746	2.6%
Molecular Tests	96,014	1,486	3.0%
Antigen Tests	5,640	257	0.4%
Serology Tests	325	3	33.0%

\*\*See COVID-19 Testing Breakdown for all testing definitions. New tests reported reflects the number of tests reported to DPHSS since the previous report and does not necessarily indicate the number of specimens run in the same time frame. \*\*\*7-day rolling average of positive tests as a percentage of tests

### COVID-19 cases by symptom onset date, Guam





# Guam COVID-19 Situation Report - 193

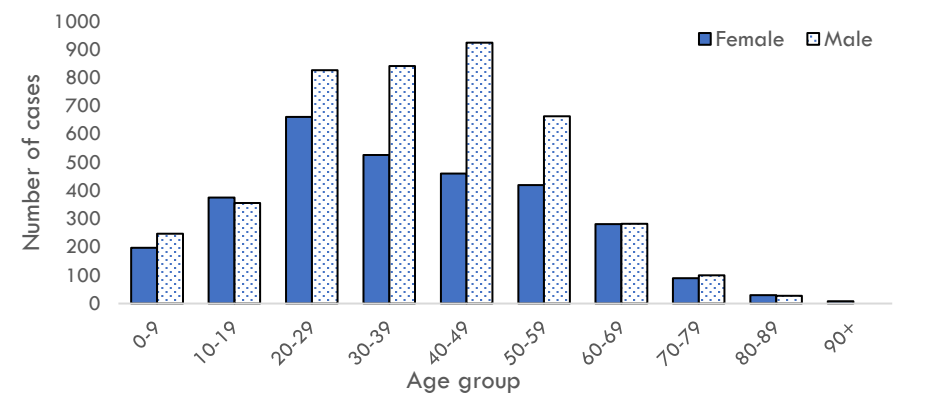
## March 12–December 31, 2020

### Case Breakdown

Status	Sex	Current isolation location
COVID-19 deaths	Female	Hospital
Cases in active isolation†	Male	Home
Cases not in isolation§	<b>Age Group</b>	Isolation facility
Civilian	0-9	Military
Military service member	10-19	<b>Epi-Link to COVID-19 case**</b>
<b>Travel History¶</b>	20-29	Household contact
US	30-39	Workplace contact
Dubai	40-49	Community contact
Japan	50-59	Healthcare contact
Mexico	60-69	<b>Residence</b>
Philippines	70-79	North
Singapore	80-89	Central
<b>Identified in quarantine</b>	90+	South
		Homeless
		Non-resident

Note: Data for recent cases are preliminary and are updated based on findings from case investigations. Residence unknown for 273 cases.

### COVID-19 cases by age group and sex



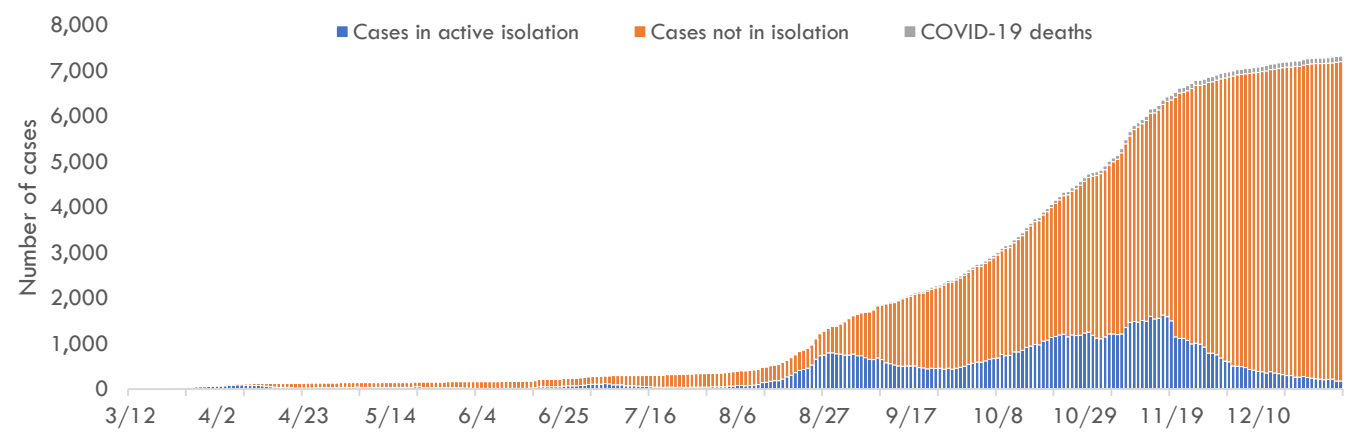
† Cases that test positive for COVID-19 through follow-up molecular testing return to active isolation.

§ Cases not in isolation indicates the number of COVID-19 cases that are no longer in active isolation based on criteria outlined on page 4. Generally, the criteria assess time since COVID-19 symptom resolution and the date of their most recent positive diagnostic test to qualify for release from isolation.

¶ In the 14 days before symptom onset. Some cases traveled to more than one country.

\*\* Some cases have more than one link to other COVID-19 cases.

### Number of cases in active isolation, cases not in isolation, and COVID-19 deaths, Guam





# Guam COVID-19 Situation Report - 193

## March 12–December 31, 2020

### COVID-19 TESTING BREAKDOWN

MOLECULAR TESTS	TOTAL	TOTAL POSITIVES*	NEW TESTS	NEW POSITIVES
<b>Guam Public Health Laboratory</b>	50,136	4,084	524	34
<b>Diagnostic Laboratory Services</b>	12,658	986	217	2
<b>Department of Defense</b>	11,815	616	168	2
<b>Guam Memorial Hospital Authority</b>	8,306	447	266	4
<b>Guam Regional Medical City</b>	6,872	360	195	3
<b>Private Clinics**</b>	6,210	576	116	2
<b>Guam National Guard Laboratory</b>	17	0	0	0
ANTIGEN TESTS	TOTAL	TOTAL POSITIVES	NEW TESTS	NEW POSITIVES
<b>Private Clinics***</b>	1,960	156	112	4
<b>Guam Public Health Laboratory</b>	3,680	87	145	0
SEROLOGY TESTS	TOTAL	TOTAL POSITIVES	NEW TESTS	NEW POSITIVES
<b>Diagnostic Laboratory Services</b>	304	16	3	0
<b>Department of Defense</b>	21	1	0	0

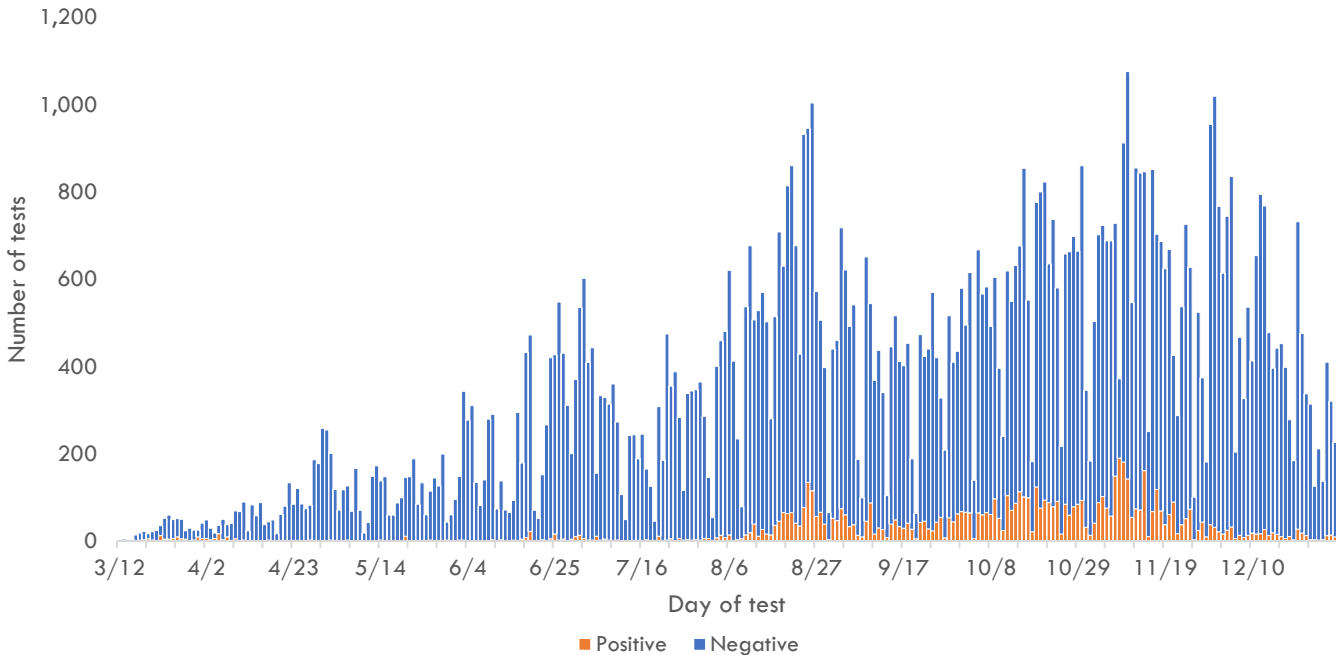
Total tests is defined as the number of specimens with conclusive results. New tests reported today is defined as the total tests reported to DPHSS since the last Situation Report. Percent positive is defined as number of positive specimens, out of all specimens tested. Total positives is defined as the number of positive specimens.

\*Five additional confirmed cases tested positive through molecular testing at an out-of-state laboratory.

\*\*Clinics included: American Medical Center, Guam Medical Care, Guam Radiology Consultants, and One Love Pediatrics.

\*\*\*Clinics included: American Medical Center, Central Medical Clinic, ExpressCare, IHP Medical Group and Guam Medical Care.

### COVID-19 testing by day of test, Guam



CONTACT INVESTIGATIONS	TOTAL	PAST 7 DAYS
<b>Contacts identified by DPHSS</b>	12,306	16
<b>Contacts notified by DPHSS</b>	6,322	30
<b>Contacts tested by DPHSS</b>	4,229	20
<b>Cases identified through contact tracing</b>	2,814	48

*Note: Data for recent cases are preliminary and are updated based on findings from case investigations.*



# Guam COVID-19 Situation Report - 193

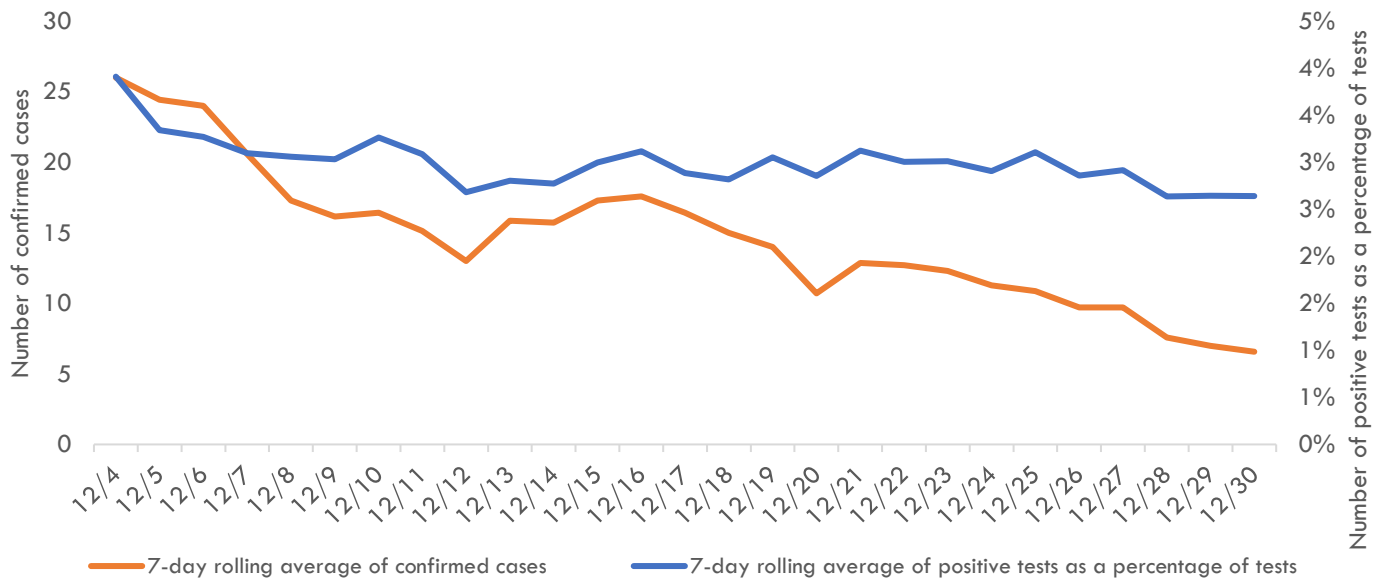
## March 12–December 31, 2020

### Pandemic Condition of Readiness Assessment

Triggers for PCOR - Cases, March 12–December 30, 2020



Triggers for PCOR - Cases, Previous 28 days



#### † Criteria for release from isolation

*For persons with mild to moderate illness who are not severely immunocompromised:*

For persons having symptoms: At least 3 days have passed since recovery defined as resolution of fever without the use of fever-reducing medications and improvement in respiratory symptoms (e.g., cough, shortness of breath) and any other symptoms attributed to COVID-19 AND at least 10 days have passed since symptoms first appeared—or since recurrent symptoms appeared—AND at least 10 days have passed since the date of their first (or most recent) positive COVID-19 diagnostic test.

For persons without symptoms: At least 10 days have passed since the date of their first (or most recent) positive COVID-19 diagnostic test assuming they have not subsequently developed symptoms since their positive test.

*For persons with severe to critical illness or who are severely immunocompromised:*

For persons having symptoms: At least 10 days have passed since symptoms first appeared, up to 20 days.

For persons without symptoms: At least 10 days have passed since the date of their first positive COVID-19 diagnostic test, up to 20 days.