

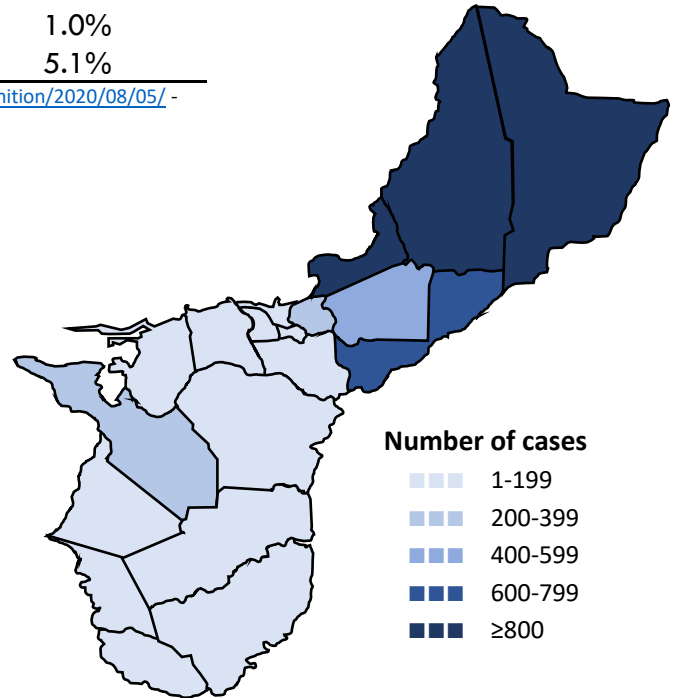


Guam COVID-19 Situation Report - 194

March 12–January 8, 2021

COVID-19 Case Count*	Total	Past 8 days	% Increase
COVID-19 Cases	7,399	82	1.1%
Confirmed cases	7,213	73	1.0%
Probable cases	186	9	5.1%

COVID-19 Cases
Primary Reported Residence



*<https://wwwn.cdc.gov/nndss/conditions/coronavirus-disease-2019-covid-19/case-definition/2020/08/05/> - CSTE/CDC COVID-19 case definition (August 5, 2020)

Summary

As of January 8, 2021, there have been 7,399 cases of COVID-19 reported on Guam. Eighty-two (82) new cases of COVID-19 were reported to DPHSS from December 31 – January 7: 73 confirmed cases and nine probable cases. One probable case received confirmatory testing. Two COVID-19 cases were reported deceased since the last situation report, 124 deaths total.

Confirmed cases - past 8 days: 73 cases tested positive by molecular testing - 46 at GPHL, 11 at GRMC, seven at DLS, three at DoD, three at Guam Radiology Consultants, two at American Medical Center, and one at GMHA.

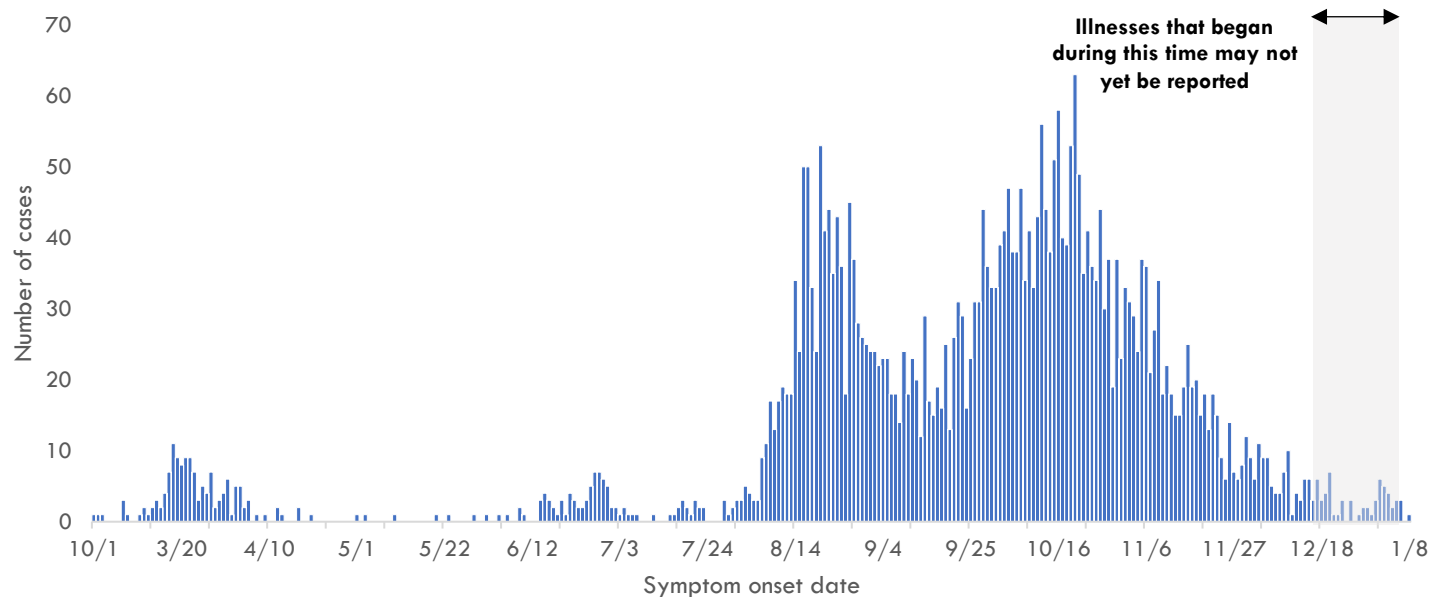
Probable cases - past 8 days: nine cases tested positive by antigen testing - five at ExpressCare, three at GPHL, and one at Evergreen Health Center.

Thirty-two (32) cases were identified through contact tracing. 14 cases reported recent travel—13 from the US and one from the Philippines—and were identified in quarantine. Ninety-nine (99) cases were reported released from isolation.

COVID-19 Testing on Guam**	Total	Tests reported past 7 days	% pos. past 7 days***
COVID-19 Tests	104,800	2,500	2.8%
Molecular Tests	98,320	2,044	4.1%
Antigen Tests	6,149	450	1.8%
Serology Tests	331	6	66.7%

See COVID-19 Testing Breakdown for all testing definitions. New tests reported reflects the number of tests reported to DPHSS since the previous report and does not necessarily indicate the number of specimens run in the same time frame. *7-day rolling average of positive tests as a percentage of tests

COVID-19 cases by symptom onset date, Guam





Guam COVID-19 Situation Report - 194

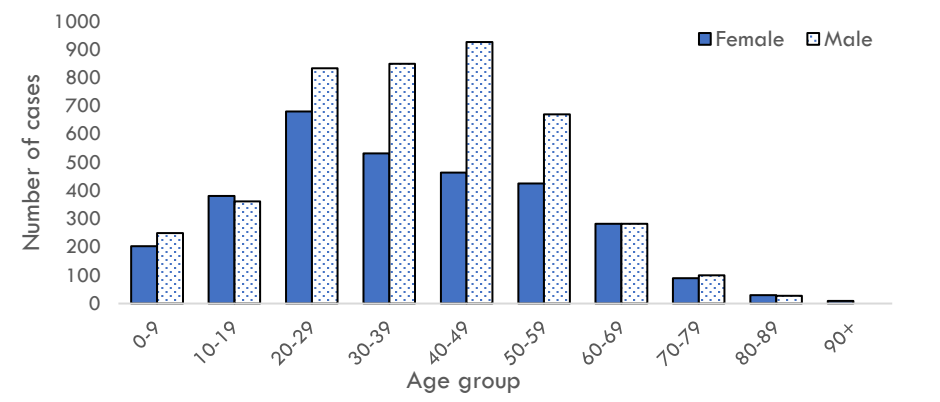
March 12–January 8, 2021

Case Breakdown

Status	Sex	Current isolation location
COVID-19 deaths	Female	Hospital
Cases in active isolation†	Male	Home
Cases not in isolation‡	Age Group	Isolation facility
Civilian	0-9	Military
Military service member	10-19	Epi-Link to COVID-19 case**
Travel History¶	20-29	Household contact
US	30-39	Workplace contact
Dubai	40-49	Community contact
Japan	50-59	Healthcare contact
Mexico	60-69	Residence
Philippines	70-79	North
Singapore	80-89	Central
Identified in quarantine	90+	South
		Homeless
		Non-resident

Note: Data for recent cases are preliminary and are updated based on findings from case investigations. Residence unknown for 273 cases.

COVID-19 cases by age group and sex



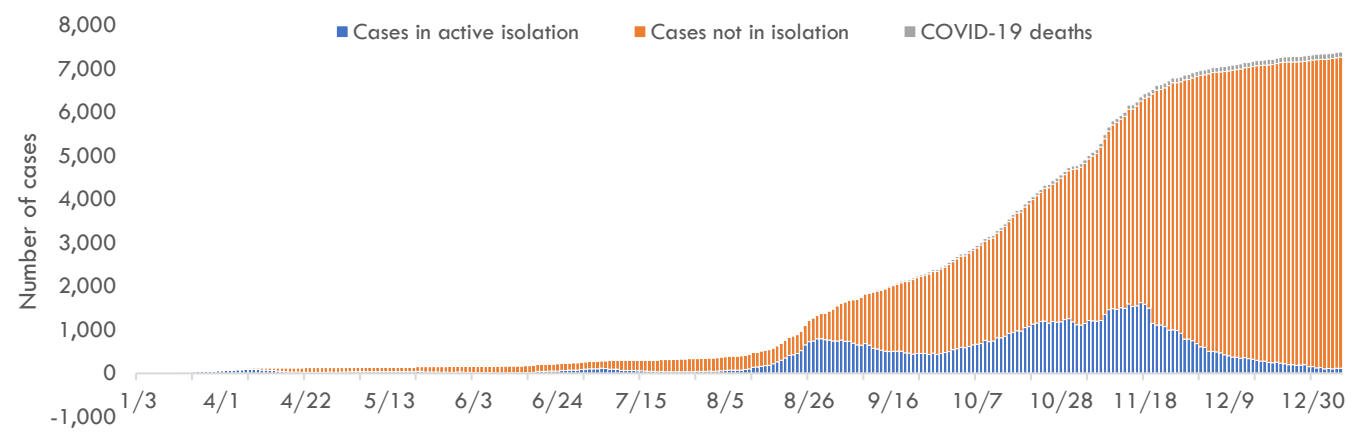
† Cases that test positive for COVID-19 through follow-up molecular testing return to active isolation.

‡ Cases not in isolation indicates the number of COVID-19 cases that are no longer in active isolation based on criteria outlined on page 4. Generally, the criteria assess time since COVID-19 symptom resolution and the date of their most recent positive diagnostic test to qualify for release from isolation.

¶ In the 14 days before symptom onset. Some cases traveled to more than one country.

** Some cases have more than one link to other COVID-19 cases.

Number of cases in active isolation, cases not in isolation, and COVID-19 deaths, Guam





Guam COVID-19 Situation Report - 194

March 12–January 8, 2021

COVID-19 TESTING BREAKDOWN

MOLECULAR TESTS	TOTAL	TOTAL POSITIVES*	NEW TESTS	NEW POSITIVES
Guam Public Health Laboratory	51,062	4,128	778	46
Diagnostic Laboratory Services	12,807	993	129	7
Department of Defense	12,310	619	476	3
Guam Memorial Hospital Authority	8,556	448	250	1
Guam Regional Medical City	7,181	371	252	11
Private Clinics**	6,387	581	159	5
Guam National Guard Laboratory	17	0	0	0
ANTIGEN TESTS	TOTAL	TOTAL POSITIVES	NEW TESTS	NEW POSITIVES
Private Clinics***	2,089	161	70	6
Guam Public Health Laboratory	4,060	92	380	3
SEROLOGY TESTS	TOTAL	TOTAL POSITIVES	NEW TESTS	NEW POSITIVES
Diagnostic Laboratory Services	308	17	4	1
Department of Defense	23	2	2	1

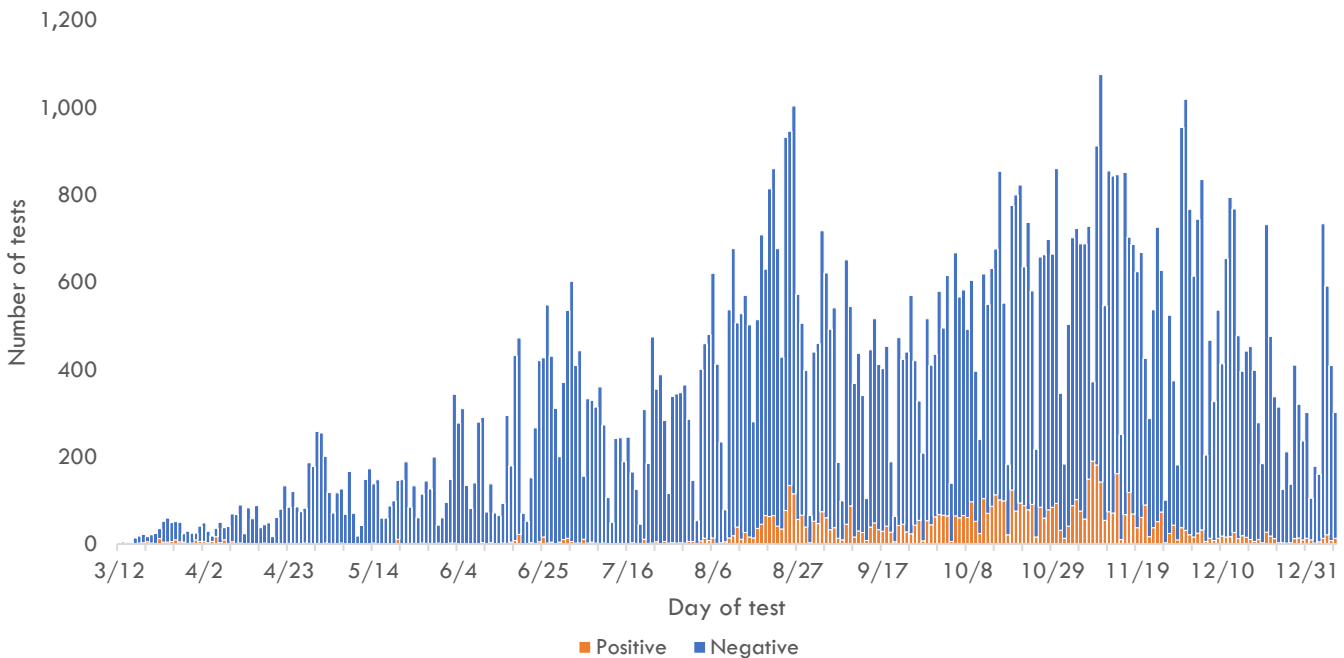
Total tests is defined as the number of specimens with conclusive results. New tests reported today is defined as the total tests reported to DPHSS since the last Situation Report. Percent positive is defined as number of positive specimens, out of all specimens tested. Total positives is defined as the number of positive specimens.

*Five additional confirmed cases tested positive through molecular testing at an out-of-state laboratory.

**Clinics included: American Medical Center, Guam Medical Care, Guam Radiology Consultants, Dr. Sheih's Clinic, and One Love Pediatrics.

***Clinics included: American Medical Center, Central Medical Clinic, ExpressCare, IHP Medical Group, Evergreen Health Center, Cancer Center of Guam, and Guam Medical Care.

COVID-19 testing by day of test, Guam



CONTACT INVESTIGATIONS	TOTAL	PAST 7 DAYS
Contacts identified by DPHSS	12,400	94
Contacts notified by DPHSS	6,384	62
Contacts tested by DPHSS	4,282	53
Cases identified through contact tracing	2,846	32

Note: Data for recent cases are preliminary and are updated based on findings from case investigations.

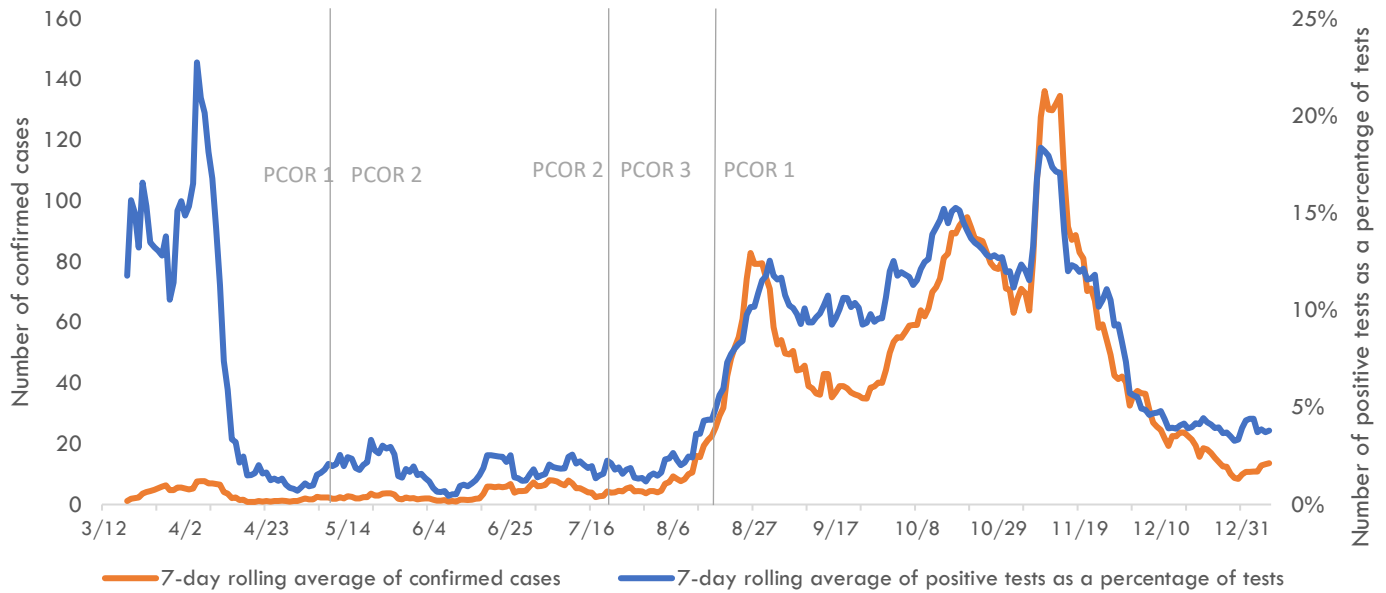


Guam COVID-19 Situation Report - 194

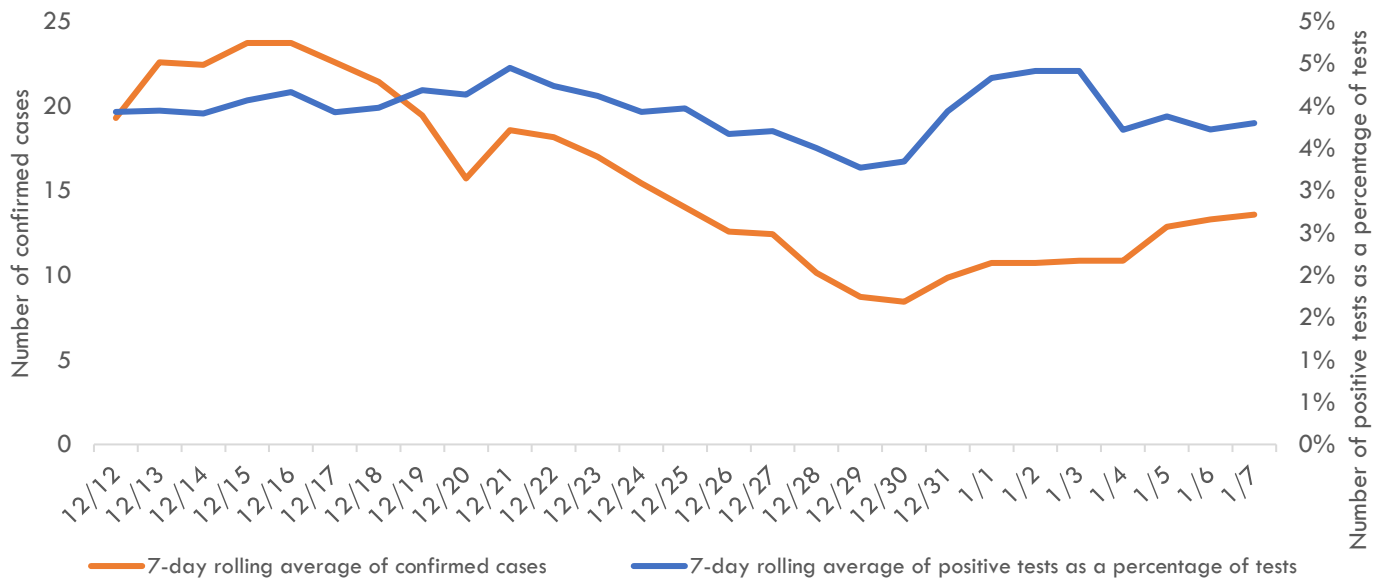
March 12–January 8, 2021

Pandemic Condition of Readiness Assessment

Triggers for PCOR - Cases, March 12–January 7, 2021



Triggers for PCOR - Cases, Previous 28 days



† Criteria for release from isolation

For persons with mild to moderate illness who are not severely immunocompromised:

For persons having symptoms: At least 3 days have passed since recovery defined as resolution of fever without the use of fever-reducing medications and improvement in respiratory symptoms (e.g., cough, shortness of breath) and any other symptoms attributed to COVID-19 AND at least 10 days have passed since symptoms first appeared—or since recurrent symptoms appeared—AND at least 10 days have passed since the date of their first (or most recent) positive COVID-19 diagnostic test.

For persons without symptoms: At least 10 days have passed since the date of their first (or most recent) positive COVID-19 diagnostic test assuming they have not subsequently developed symptoms since their positive test.

For persons with severe to critical illness or who are severely immunocompromised:

For persons having symptoms: At least 10 days have passed since symptoms first appeared, up to 20 days.

For persons without symptoms: At least 10 days have passed since the date of their first positive COVID-19 diagnostic test, up to 20 days.