

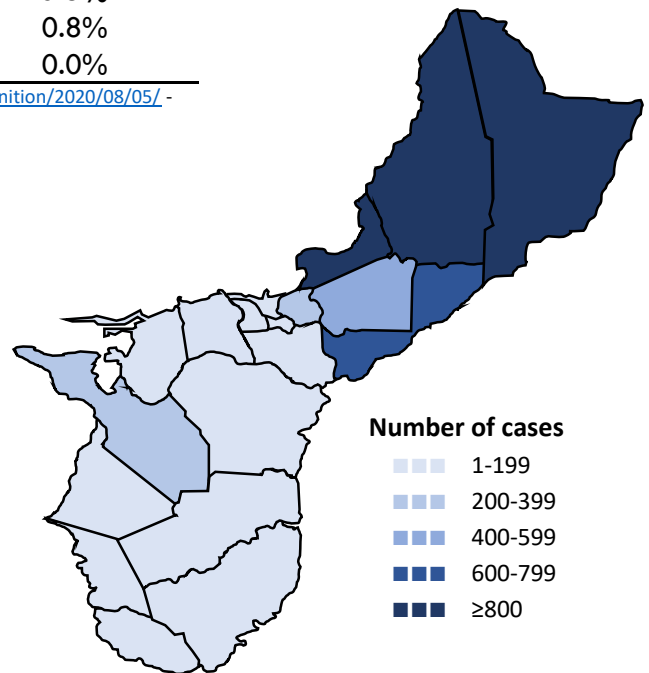


Guam COVID-19 Situation Report - 198

March 12, 2020 – February 5, 2021

COVID-19 Case Count*	Total	Past 7 days	% Increase
COVID-19 Cases	7,636	57	0.8%
Confirmed cases	7,429	57	0.8%
Probable cases	207	0	0.0%

**COVID-19 Cases
Primary Reported Residence**



*<https://wwwn.cdc.gov/nndss/conditions/coronavirus-disease-2019-covid-19/case-definition/2020/08/05/> - CSTE/CDC COVID-19 case definition (August 5, 2020)

Summary

As of February 5, 2021, there have been 7,636 cases of COVID-19 reported on Guam. Fifty-seven (57) new cases of COVID-19 were reported to DPHSS from January 29 – February 4: all 57 confirmed cases. No COVID-19 case was reported deceased since the last situation report, 129 deaths total.

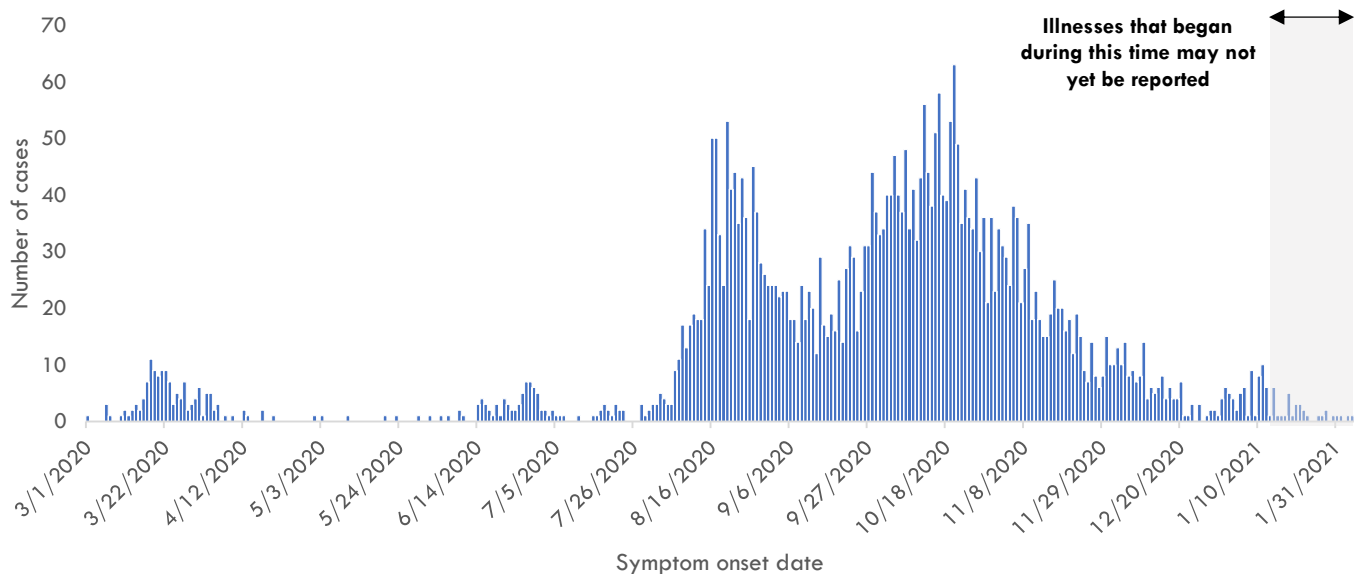
Confirmed cases - past 7 days: 57 cases tested positive by molecular testing - 24 at GPHL, 15 at DoD, six at GMHA, five at GRMC, three at Guam Radiology Consultants, two at DLS, one at American Medical Center, and one at an off-island clinic.

Eleven (11) cases were identified through contact tracing. 33 cases reported recent travel—27 from the US, 5 from Philippines, and 1 from Japan—and were identified in quarantine. Sixty-one (61) cases were reported released from isolation.

COVID-19 Testing on Guam**	Total	Tests reported past 7 days	% pos. past 7 days***
COVID-19 Tests	117,716	3,220	1.7%
Molecular Tests	108,981	2,929	1.8%
Antigen Tests	8,392	289	0.0%
Serology Tests	343	2	50.0%

See COVID-19 Testing Breakdown for all testing definitions. New tests reported reflects the number of tests reported to DPHSS since the previous report and does not necessarily indicate the number of specimens run in the same time frame. *7-day rolling average of positive tests as a percentage of tests

COVID-19 cases by symptom onset date, Guam





Guam COVID-19 Situation Report - 198

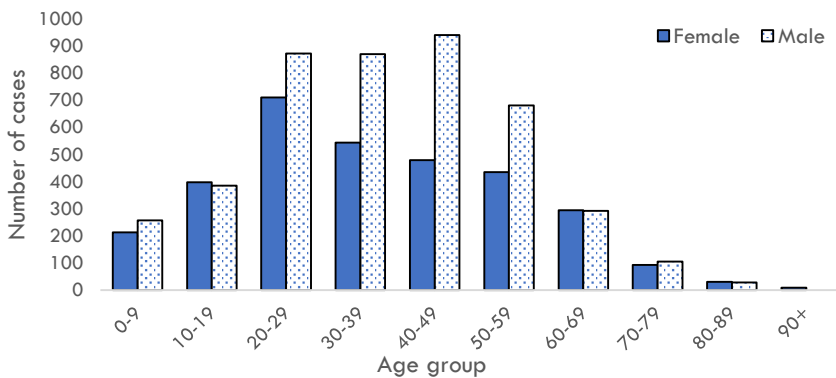
March 12, 2020 – February 5, 2021

Case Breakdown

Status	Sex	Current isolation location
COVID-19 deaths	Female	Hospital
Cases in active isolation†	Male	Home
Cases not in isolation§	Age Group	Isolation facility
Civilian	0-9	Military
Military service member	10-19	Epi-Link to COVID-19 case**
Travel History¶	20-29	Household contact
US	30-39	Workplace contact
Dubai	40-49	Community contact
Japan	50-59	Healthcare contact
Mexico	60-69	Residence
Philippines	70-79	North
Singapore	80-89	Central
Identified in quarantine	90+	South
		Homeless
		Non-resident

Note: Data for recent cases are preliminary and are updated based on findings from case investigations. Residence unknown for 273 cases.

COVID-19 cases by age group and sex



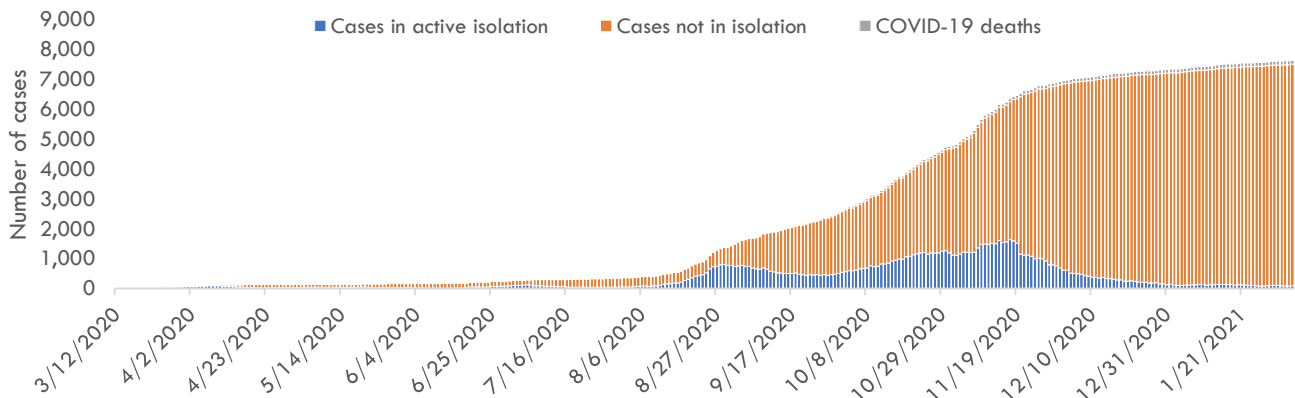
† Cases that test positive for COVID-19 through follow-up molecular testing return to active isolation.

§ Cases not in isolation indicates the number of COVID-19 cases that are no longer in active isolation based on criteria outlined on page 4. Generally, the criteria assess time since COVID-19 symptom resolution and the date of their most recent positive diagnostic test to qualify for release from isolation.

¶ In the 14 days before symptom onset. Some cases traveled to more than one country.

** Some cases have more than one link to other COVID-19 cases.

Number of cases in active isolation, cases not in isolation, and COVID-19 deaths, Guam





Guam COVID-19 Situation Report - 197

March 12, 2020 – February 5, 2021

COVID-19 TESTING BREAKDOWN

MOLECULAR TESTS	TOTAL	TOTAL POSITIVES*	NEW TESTS	NEW POSITIVES
Guam Public Health Laboratory	54,524	4,217	1,044	24
Department of Defense	15,446	675	950	15
Diagnostic Laboratory Services	13,685	1,013	191	2
Guam Memorial Hospital Authority	9,677	465	272	6
Guam Regional Medical City	8,142	383	200	5
Private Clinics**	7,490	599	272	5
Guam National Guard Laboratory	17	0	0	0
ANTIGEN TESTS	TOTAL	TOTAL POSITIVES	NEW TESTS	NEW POSITIVES
Guam Public Health Laboratory	5,928	98	266	0
Private Clinics***	2,464	148	23	0
SEROLOGY TESTS	TOTAL	TOTAL POSITIVES	NEW TESTS	NEW POSITIVES
Diagnostic Laboratory Services	320	21	2	1
Department of Defense	23	2	0	0

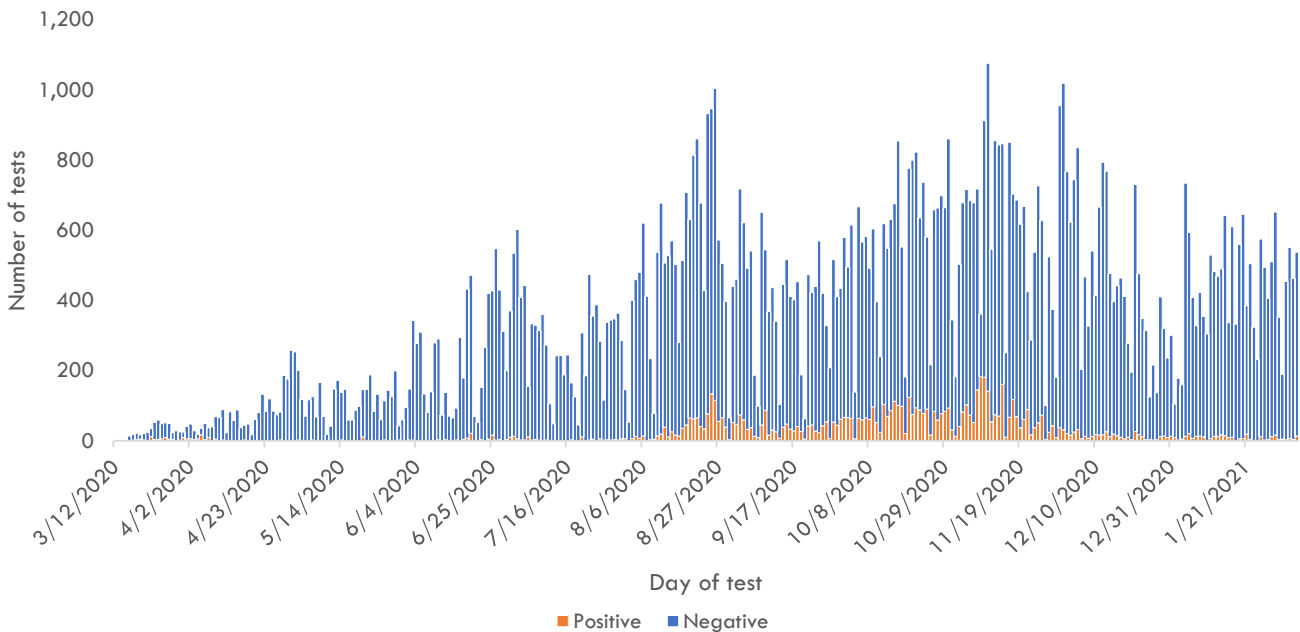
Total tests is defined as the number of specimens with conclusive results. New tests reported today is defined as the total tests reported to DPHSS since the last Situation Report. Percent positive is defined as number of positive specimens, out of all specimens tested. Total positives is defined as the number of positive specimens.

*Five additional confirmed cases tested positive through molecular testing at an out-of-state laboratory.

**Clinics included: American Medical Center, Guam Medical Care, Guam Radiology Consultants, Dr. Sheih's Clinic, US Marshalls Service, One Love Pediatrics, and Off-Island Clinics.

***Clinics included: American Medical Center, Central Medical Clinic, ExpressCare, IHP Medical Group, Evergreen Health Center, Cancer Center of Guam, Department of Corrections, Health Services of the Pacific, Tumon Medical Office, and Guam Medical Care.

COVID-19 testing by day of test, Guam



CONTACT INVESTIGATIONS	TOTAL	PAST 7 DAYS
Contacts identified by DPHSS	12,766	46
Contacts notified by DPHSS	6,748	123
Contacts tested by DPHSS	4,490	71
Cases identified through contact tracing	2,917	11

Note: Data for recent cases are preliminary and are updated based on findings from case investigations.

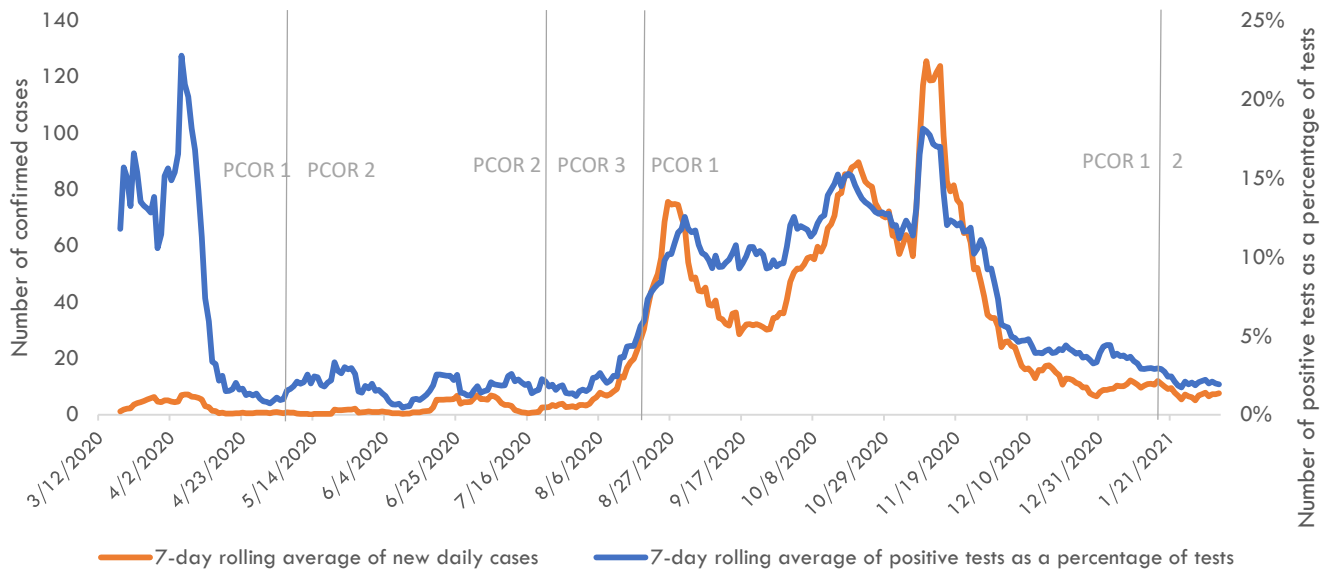


Guam COVID-19 Situation Report - 198

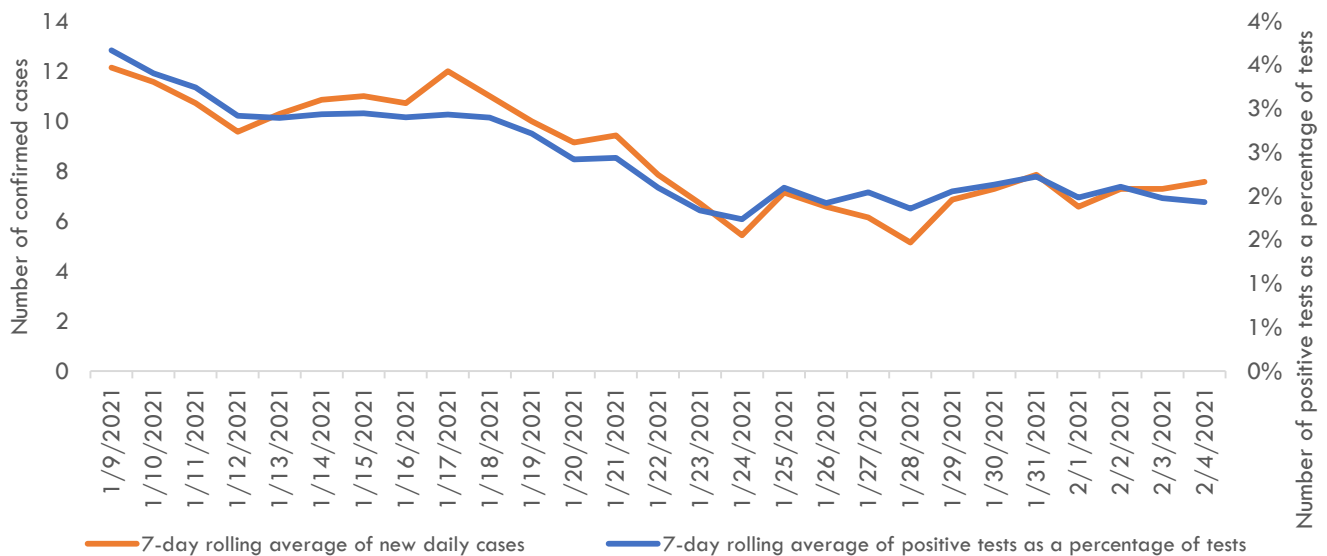
March 12, 2020 – February 5, 2021

Pandemic Condition of Readiness Assessment

Triggers for PCOR - Cases, March 12, 2020–February 4, 2021



Triggers for PCOR - Cases, Previous 28 days



† Criteria for release from isolation

For persons with mild to moderate illness who are not severely immunocompromised:

For persons having symptoms: At least 3 days have passed since recovery defined as resolution of fever without the use of fever-reducing medications and improvement in respiratory symptoms (e.g., cough, shortness of breath) and any other symptoms attributed to COVID-19 AND at least 10 days have passed since symptoms first appeared—or since recurrent symptoms appeared—AND at least 10 days have passed since the date of their first (or most recent) positive COVID-19 diagnostic test.

For persons without symptoms: At least 10 days have passed since the date of their first (or most recent) positive COVID-19 diagnostic test assuming they have not subsequently developed symptoms since their positive test.

For persons with severe to critical illness or who are severely immunocompromised:

For persons having symptoms: At least 10 days have passed since symptoms first appeared, up to 20 days.

For persons without symptoms: At least 10 days have passed since the date of their first positive COVID-19 diagnostic test, up to 20 days.