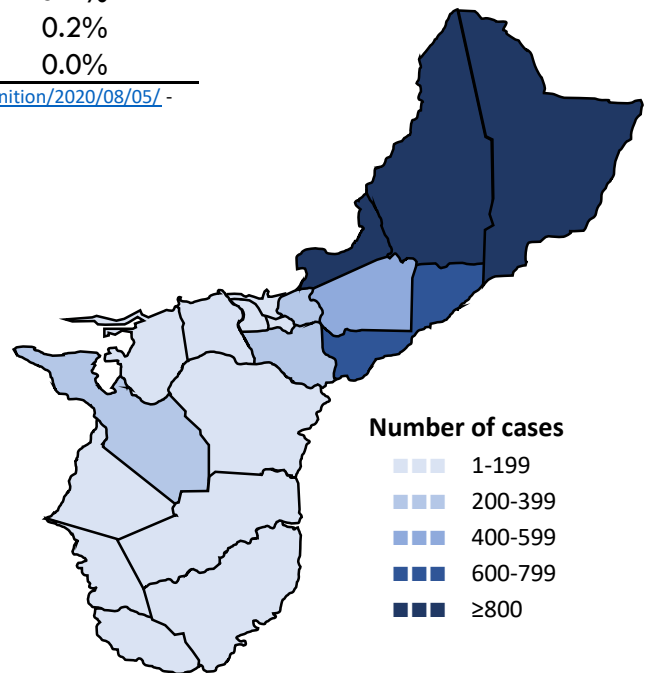




## Guam COVID-19 Situation Report - 202 March 12, 2020 – March 5, 2021

COVID-19 Case Count*	Total	Past 7 days	% Increase
COVID-19 Cases	<b>7,748</b>	<b>14</b>	<b>0.2%</b>
Confirmed cases	7,539	14	0.2%
Probable cases	209	0	0.0%

COVID-19 Cases  
Primary Reported Residence



\*<https://www.cdc.gov/nndss/conditions/coronavirus-disease-2019-covid-19/case-definition/2020/08/05/> - CSTE/CDC COVID-19 case definition (August 5, 2020)

### Summary

As of March 5, 2021, there have been 7,748 cases of COVID-19 reported on Guam. Fourteen (14) new cases of COVID-19 were reported to DPHSS from February 26 - March 4: 14 confirmed cases.

During the past two weeks, the DPHSS Medical Director and Territorial Epidemiologist, in conjunction with the Acting Chief Medical Examiner, have been conducting a review of all possible COVID-19 related deaths. This coordinated COVID-19 death review process has resulted in two additional COVID-19 related deaths, and there are an additional 4 that are under review. Therefore the current COVID-19 related death count is 133.

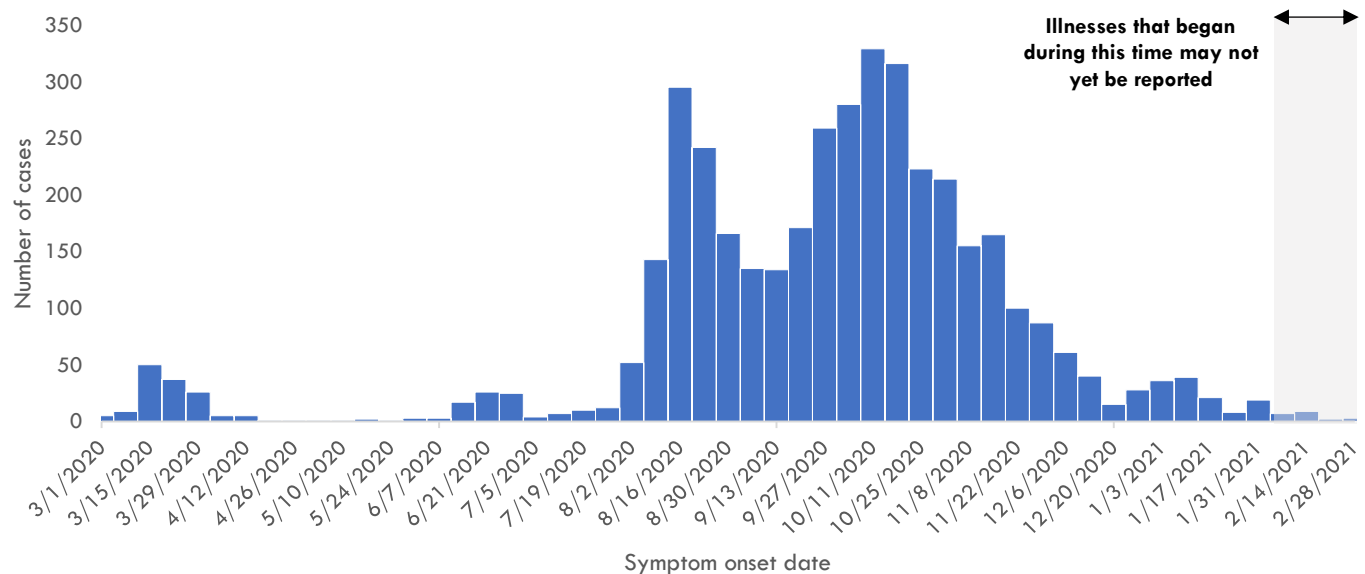
Confirmed cases - past 7 days: 14 cases tested positive by molecular testing - seven at GPHL, three at GRMC, two at GMHA, one at DoD, and one at GRC.

One (1) case was identified through contact tracing. Eight cases reported recent travel—Six from the US, two from Philippines, and one from India — where seven were identified in quarantine. Twenty-six (26) cases were reported released from isolation.

COVID-19 Testing on Guam**	Total	Tests reported past 7 days	% pos. past 7 days***
COVID-19 Tests	130,083	3,112	0.6%
Molecular Tests	120,426	3,006	0.5%
Antigen Tests	9,299	100	0.0%
Serology Tests	358	6	50.0%

\*\*See COVID-19 Testing Breakdown for all testing definitions. New tests reported reflects the number of tests reported to DPHSS since the previous report and does not necessarily indicate the number of specimens run in the same time frame. \*\*\*7-day rolling average of positive tests as a percentage of tests

### COVID-19 cases by symptom onset date, Guam





# Guam COVID-19 Situation Report - 202

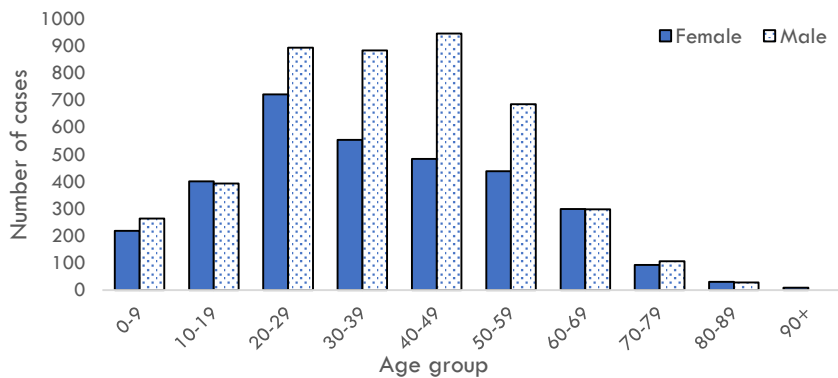
## March 12, 2020 – March 5, 2021

### Case Breakdown

Status	Sex	Current isolation location
COVID-19 deaths	Female	Hospital
Cases in active isolation†	Male	Home
Cases not in isolation§	<b>Age Group</b>	Isolation facility
Civilian	0-9	Military
Military service member	10-19	<b>Epi-Link to COVID-19 case**</b>
<b>Travel History¶</b>	20-29	Household contact
US	30-39	Workplace contact
Dubai	40-49	Community contact
Japan	50-59	Healthcare contact
Mexico	60-69	<b>Residence</b>
Philippines	70-79	North
Other	80-89	Central
<b>Identified in quarantine</b>	90+	South
		Homeless
		Non-resident

Note: Data for recent cases are preliminary and are updated based on findings from case investigations. Residence unknown for 273 cases.

### COVID-19 cases by age group and sex



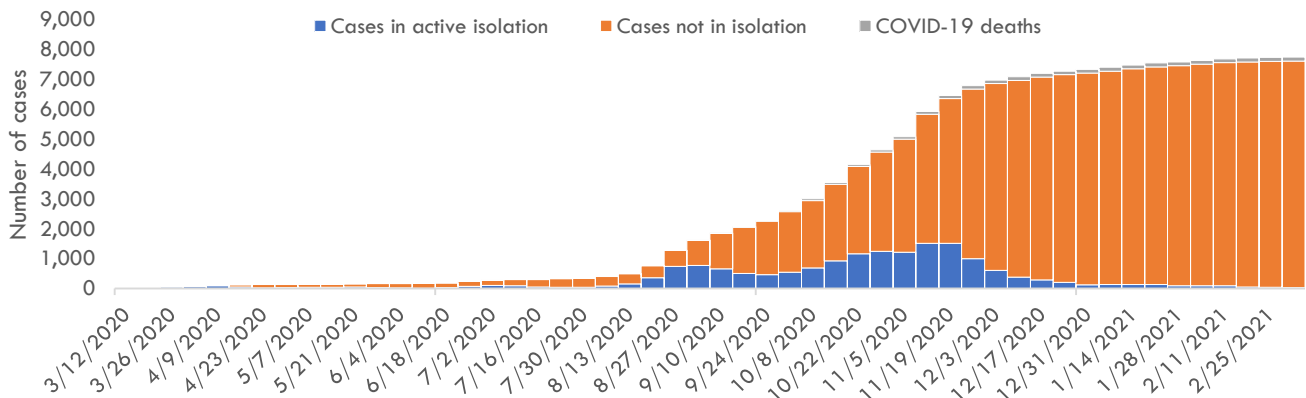
† Cases that test positive for COVID-19 through follow-up molecular testing return to active isolation.

§ Cases not in isolation indicates the number of COVID-19 cases that are no longer in active isolation based on criteria outlined on page 4. Generally, the criteria assess time since COVID-19 symptom resolution and the date of their most recent positive diagnostic test to qualify for release from isolation.

¶ In the 14 days before symptom onset. Some cases traveled to more than one country.

\*\* Some cases have more than one link to other COVID-19 cases.

### Number of cases in active isolation, cases not in isolation, and COVID-19 deaths, Guam





## Guam COVID-19 Situation Report - 202 March 12, 2020 – March 5, 2021

### COVID-19 TESTING BREAKDOWN

MOLECULAR TESTS	TOTAL	TOTAL POSITIVES*	NEW TESTS	NEW POSITIVES
<b>Guam Public Health Laboratory</b>	58,808	4,268	1,052	7
<b>Department of Defense</b>	18,717	692	1,065	1
<b>Diagnostic Laboratory Services</b>	14,706	1,031	279	0
<b>Guam Memorial Hospital Authority</b>	10,816	473	288	2
<b>Guam Regional Medical City</b>	9,026	395	235	3
<b>Private Clinics**</b>	8,336	603	87	1
<b>Guam National Guard Laboratory</b>	17	0	0	0
ANTIGEN TESTS	TOTAL	TOTAL POSITIVES	NEW TESTS	NEW POSITIVES
<b>Guam Public Health Laboratory</b>	6,124	99	3	0
<b>Private Clinics***</b>	3,175	149	97	0
SEROLOGY TESTS	TOTAL	TOTAL POSITIVES	NEW TESTS	NEW POSITIVES
<b>Diagnostic Laboratory Services</b>	332	25	3	3
<b>Department of Defense</b>	26	2	3	0

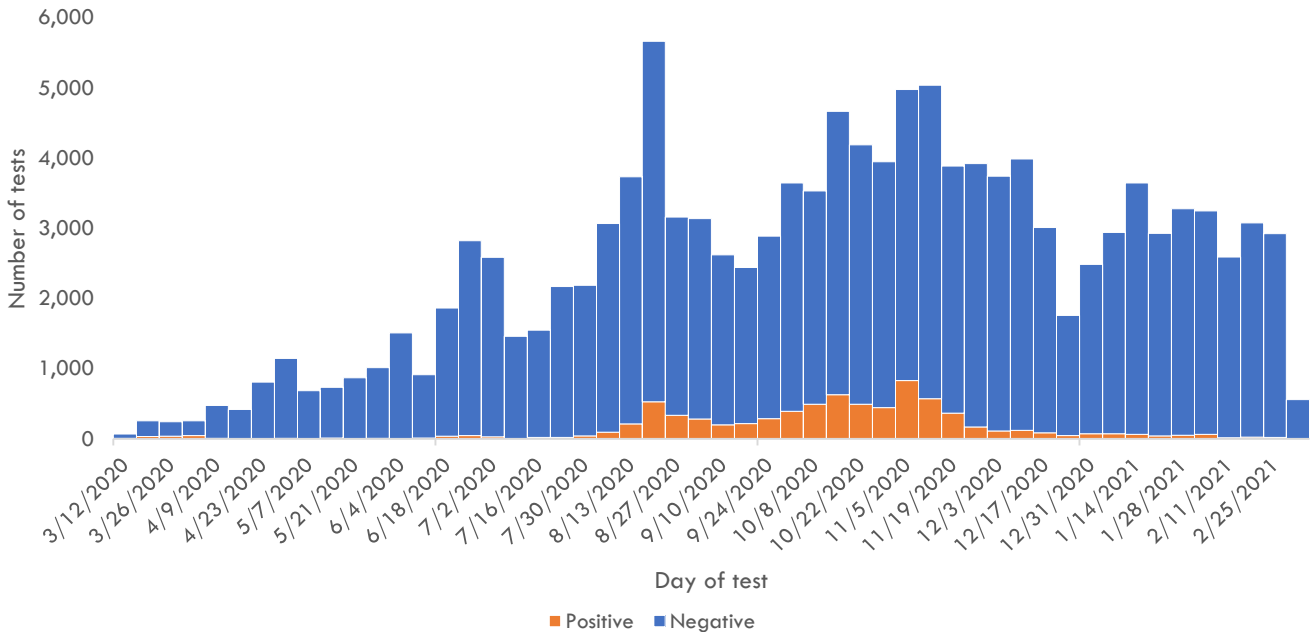
Total tests is defined as the number of specimens with conclusive results. New tests reported today is defined as the total tests reported to DPHSS since the last Situation Report. Percent positive is defined as number of positive specimens, out of all specimens tested. Total positives is defined as the number of positive specimens.

\*Five additional confirmed cases tested positive through molecular testing at an out-of-state laboratory.

\*\*Clinics included: American Medical Center, Guam Medical Care, Guam Radiology Consultants, Dr. Sheih's Clinic, US Marshalls Service, One Love Pediatrics, and Off-Island Clinics.

\*\*\*Clinics included: American Medical Center, Central Medical Clinic, ExpressCare, IHP Medical Group, Evergreen Health Center, Cancer Center of Guam, Department of Corrections, Health Services of the Pacific, Tumon Medical Office, and Guam Medical Care.

### COVID-19 testing by day of test, Guam



CONTACT INVESTIGATIONS	TOTAL	PAST 7 DAYS
<b>Contacts identified by DPHSS</b>	12,997	90
<b>Contacts notified by DPHSS</b>	7,027	45
<b>Contacts tested by DPHSS</b>	4,565	17
<b>Cases identified through contact tracing</b>	2,942	1

Note: Data for recent cases are preliminary and are updated based on findings from case investigations.

Source: Epidemiology and Laboratory Capacity Program and Office of Epidemiology and Research, Guam Department of Public Health and Social Services

Compiled by the Guam DPHSS COVID-19 Response Surveillance Team

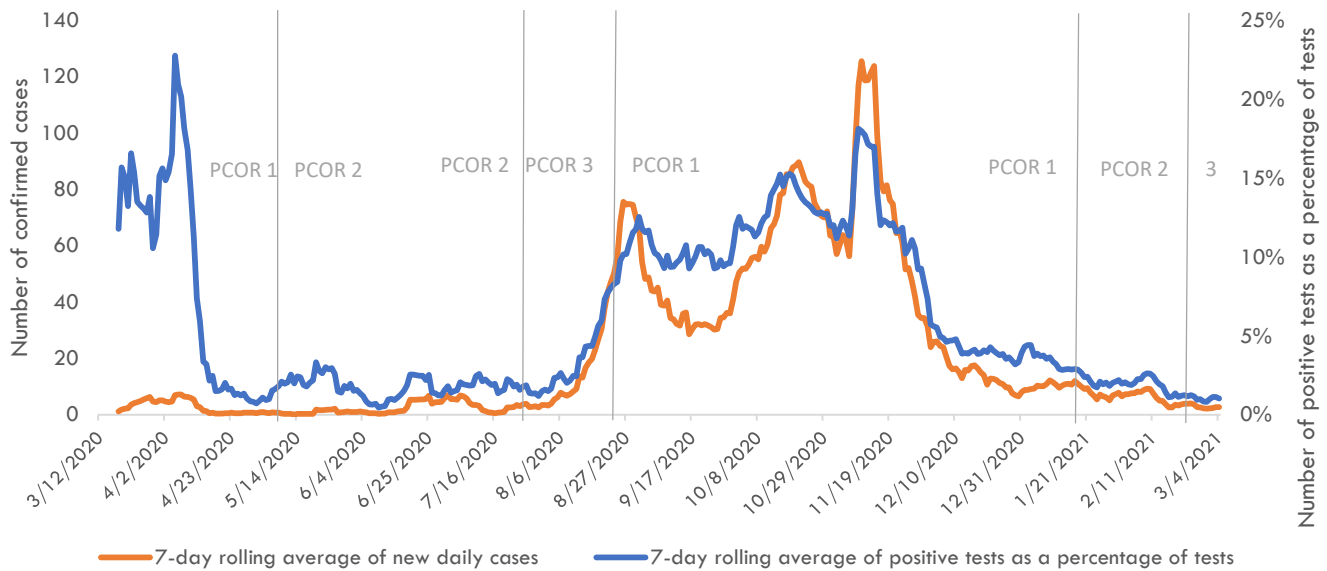


# Guam COVID-19 Situation Report - 202

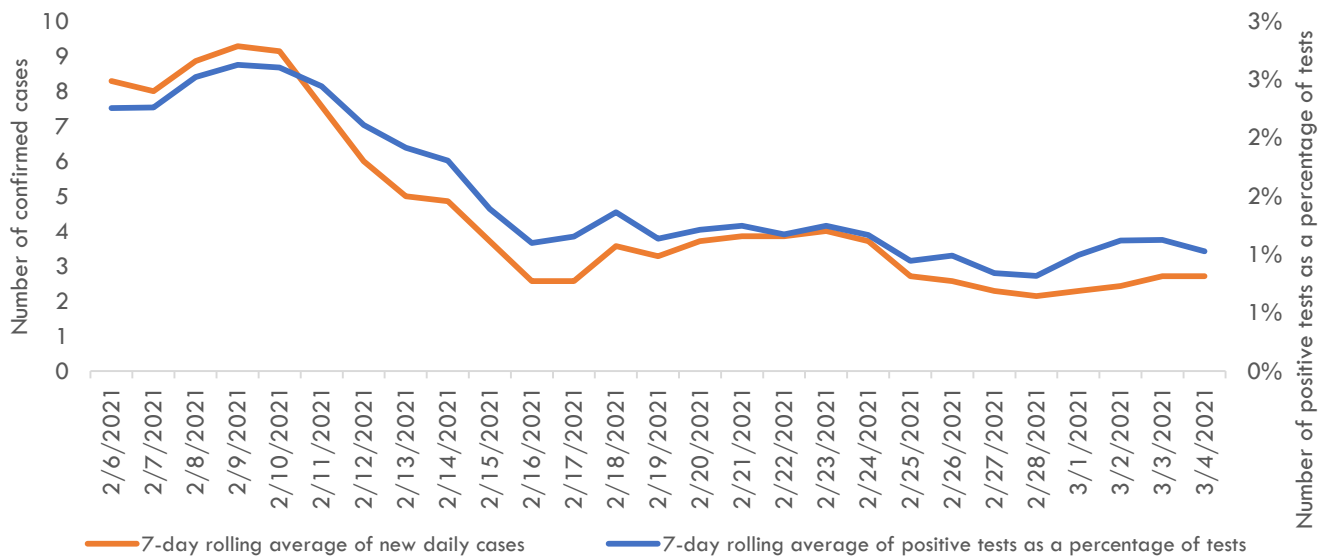
## March 12, 2020 – March 5, 2021

### Pandemic Condition of Readiness Assessment

Triggers for PCOR - Cases, March 12, 2020–March 4, 2021



Triggers for PCOR - Cases, Previous 28 days



#### † Criteria for release from isolation

*For persons with mild to moderate illness who are not severely immunocompromised:*

For persons having symptoms: At least 3 days have passed since recovery defined as resolution of fever without the use of fever-reducing medications and improvement in respiratory symptoms (e.g., cough, shortness of breath) and any other symptoms attributed to COVID-19 AND at least 10 days have passed since symptoms first appeared—or since recurrent symptoms appeared—AND at least 10 days have passed since the date of their first (or most recent) positive COVID-19 diagnostic test.

For persons without symptoms: At least 10 days have passed since the date of their first (or most recent) positive COVID-19 diagnostic test assuming they have not subsequently developed symptoms since their positive test.

*For persons with severe to critical illness or who are severely immunocompromised:*

For persons having symptoms: At least 10 days have passed since symptoms first appeared, up to 20 days.

For persons without symptoms: At least 10 days have passed since the date of their first positive COVID-19 diagnostic test, up to 20 days.