

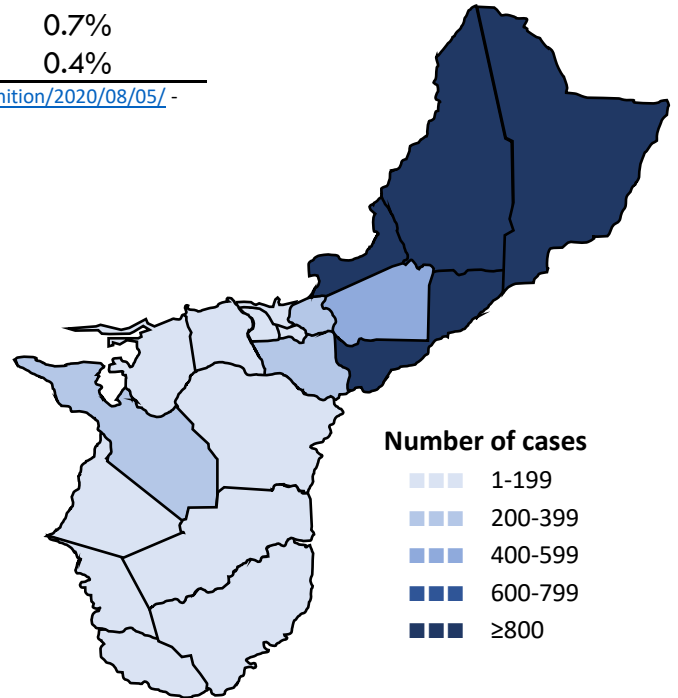


Guam COVID-19 Situation Report - 213

March 12, 2020 – May 21, 2021

COVID-19 Case Count*	Total	Past 7 days	% Increase
COVID-19 Cases	8,131	52	0.6%
Confirmed cases	7,895	51	0.7%
Probable cases	236	1	0.4%

COVID-19 Cases
Primary Reported Residence



*<https://wwwn.cdc.gov/nndss/conditions/coronavirus-disease-2019-covid-19/case-definition/2020/08/05/> - CSTE/CDC COVID-19 case definition (August 5, 2020)

Summary

As of May 21, 2021, there have been 8,131 cases of COVID-19 reported on Guam. Fifty-two (52) new cases of COVID-19 were reported to DPHSS from May 14 - May 20: 51 confirmed cases and one probable case. No COVID-19 case was reported deceased since the last situation report.

Confirmed cases - past 7 days: 51 cases tested positive by molecular testing - 29 at GPHL, nine at DoD, eight at GMHA, three at AMC, one at GRMC, and one at GRC.

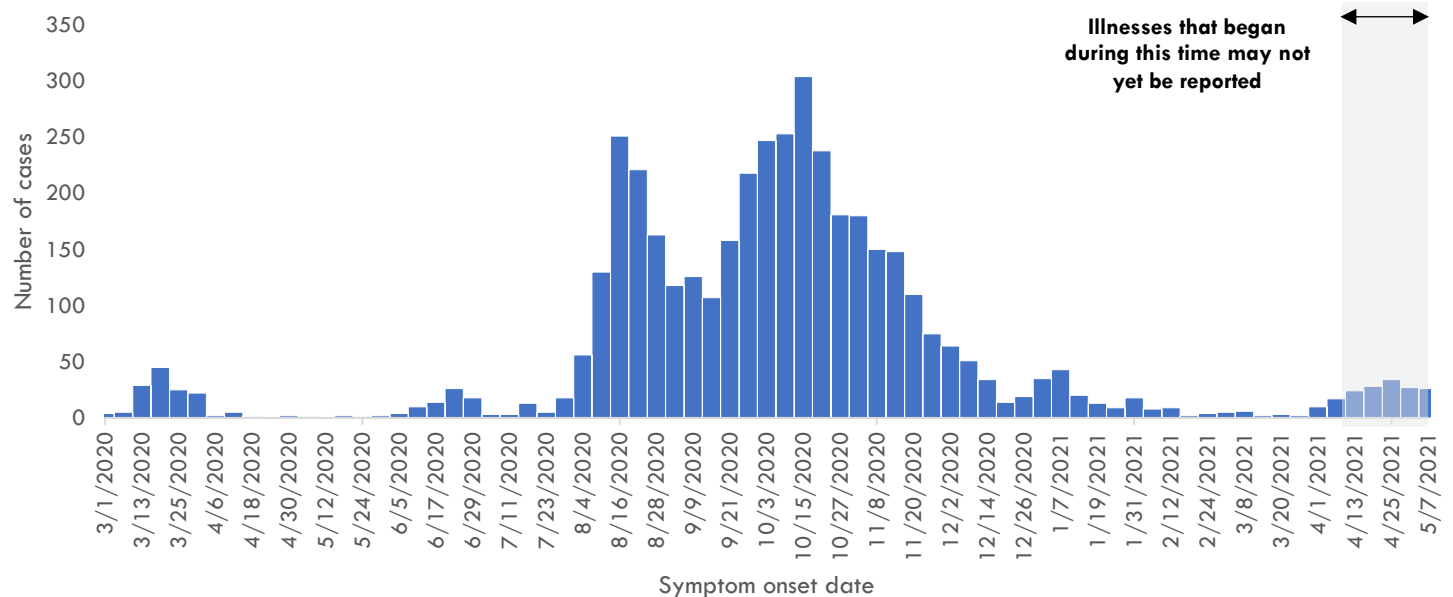
Probable cases - past 7 days: one case tested positive by antigen testing - at AMC.

17 new cases were identified through contact tracing. Three (3) cases reported recent travel— one from the U.S., one from Philippines, and one from Japan — and were identified in quarantine.

COVID-19 Testing on Guam**	Total	Tests reported past 7 days	% pos. past 7 days***
COVID-19 Tests	162,965	2,578	2.5%
Molecular Tests	150,897	2,353	2.6%
Antigen Tests	11,687	222	0.5%
Serology Tests	381	3	0.0%

See COVID-19 Testing Breakdown for all testing definitions. New tests reported reflects the number of tests reported to DPHSS since the previous report and does not necessarily indicate the number of specimens run in the same time frame. *7-day rolling average of positive tests as a percentage of tests

COVID-19 cases by symptom onset date, Guam





Guam COVID-19 Situation Report - 213

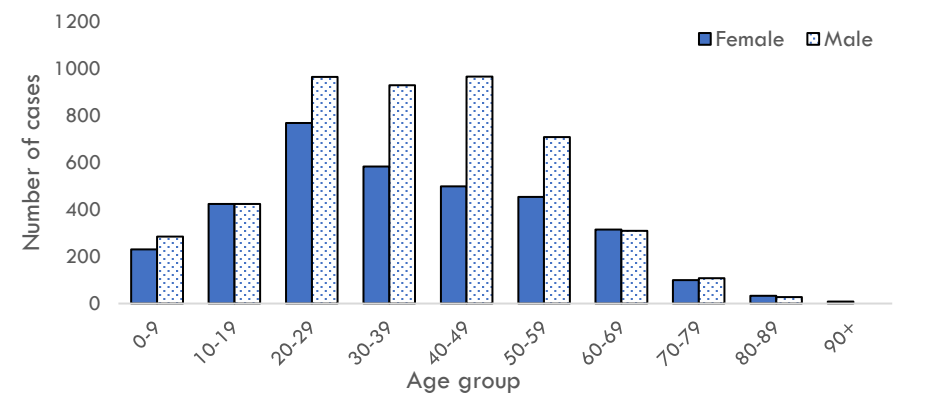
March 12, 2020 – May 21, 2021

Case Breakdown

Status	Sex	Current isolation location
COVID-19 deaths	Female	Hospital
Cases in active isolation†	Male	Home
Cases not in isolation‡	Age Group	Isolation facility
Civilian	0-9	Military
Military service member	10-19	Epi-Link to COVID-19 case**
Travel History¶	20-29	Household contact
US	30-39	Workplace contact
Dubai	40-49	Community contact
Japan	50-59	Healthcare contact
Mexico	60-69	Residence
Philippines	70-79	North
Other	80-89	Central
Identified in quarantine	90+	South
		Homeless
		Non-resident

Note: Data for recent cases are preliminary and are updated based on findings from case investigations. Residence unknown for 273 cases.

COVID-19 cases by age group and sex



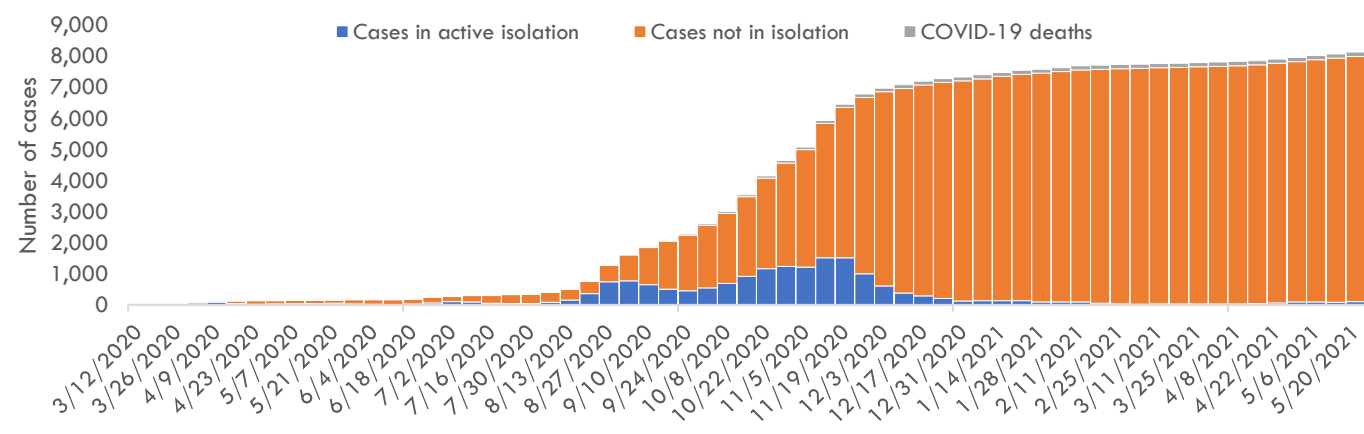
† Cases that test positive for COVID-19 through follow-up molecular testing return to active isolation.

‡ Cases not in isolation indicates the number of COVID-19 cases that are no longer in active isolation based on criteria outlined on page 4. Generally, the criteria assess time since COVID-19 symptom resolution and the date of their most recent positive diagnostic test to qualify for release from isolation.

¶ In the 14 days before symptom onset. Some cases traveled to more than one country.

** Some cases have more than one link to other COVID-19 cases.

Number of cases in active isolation, cases not in isolation, and COVID-19 deaths, Guam





Guam COVID-19 Situation Report - 213

March 12, 2020 – May 21, 2021

COVID-19 TESTING BREAKDOWN

MOLECULAR TESTS	TOTAL	TOTAL POSITIVES*	NEW TESTS	NEW POSITIVES
Guam Public Health Laboratory	73,474	4,450	1,106	29
Department of Defense	24,105	761	354	9
Diagnostic Laboratory Services	17,484	1,051	226	0
Guam Memorial Hospital Authority	14,019	519	269	8
Guam Regional Medical City	11,960	415	261	1
Private Clinics**	9,838	623	137	4
Guam National Guard Laboratory	17	0	0	0
ANTIGEN TESTS	TOTAL	TOTAL POSITIVES	NEW TESTS	NEW POSITIVES
Guam Public Health Laboratory	7,663	116	128	0
Private Clinics***	4,024	171	94	1
SEROLOGY TESTS	TOTAL	TOTAL POSITIVES	NEW TESTS	NEW POSITIVES
Diagnostic Laboratory Services	355	30	3	0
Department of Defense	26	2	0	0

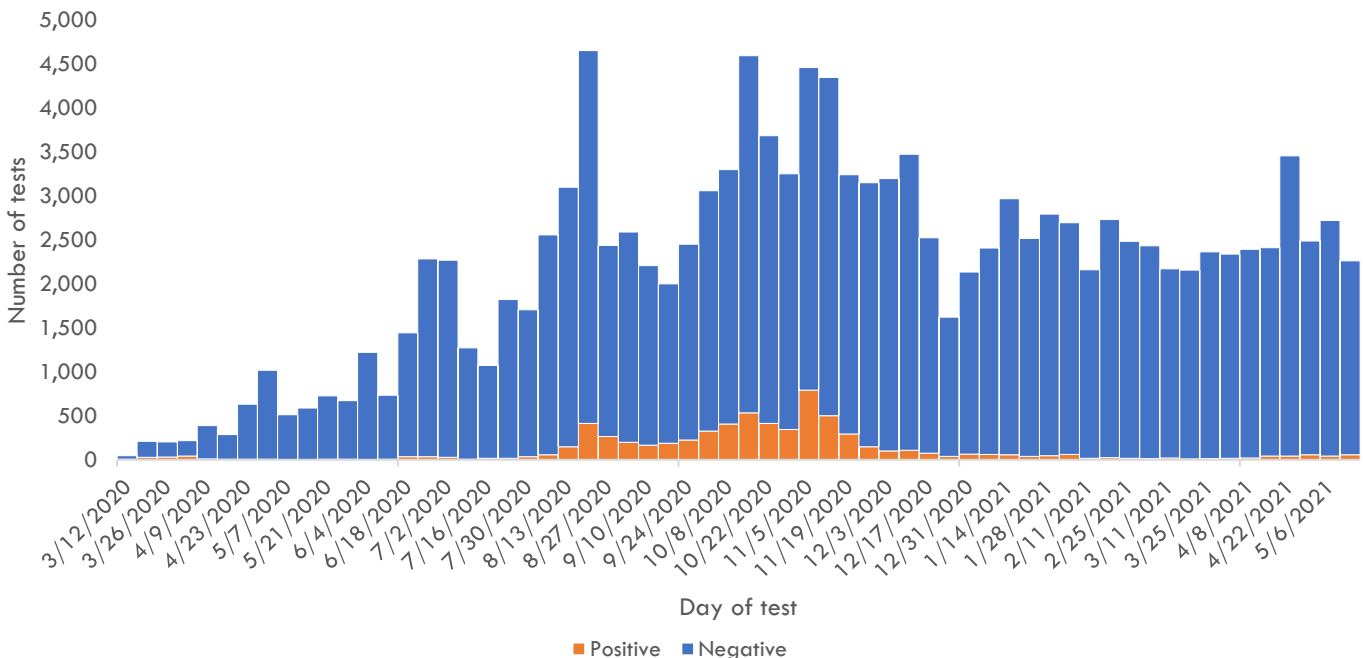
Total tests is defined as the number of specimens with conclusive results. New tests reported today is defined as the total tests reported to DPHSS since the last Situation Report. Percent positive is defined as number of positive specimens, out of all specimens tested. Total positives is defined as the number of positive specimens.

*Five additional confirmed cases tested positive through molecular testing at an out-of-state laboratory.

**Clinics included: American Medical Center, Guam Medical Care, Guam Radiology Consultants, Dr. Sheith's Clinic, US Marshalls Service, One Love Pediatrics, and Off-Island Clinics.

***Clinics included: American Medical Center, Central Medical Clinic, ExpressCare, IHP Medical Group, Evergreen Health Center, Cancer Center of Guam, Department of Corrections, Health Services of the Pacific, Tumon Medical Office, and Guam Medical Care.

COVID-19 testing by day of test, Guam



CONTACT INVESTIGATIONS	TOTAL	PAST 7 DAYS
Contacts identified by DPHSS	13,977	414
Contacts notified by DPHSS	7,520	80
Contacts tested by DPHSS	4,758	45
Cases identified through contact tracing	3,045	17

Note: Data for recent cases are preliminary and are updated based on findings from case investigations.

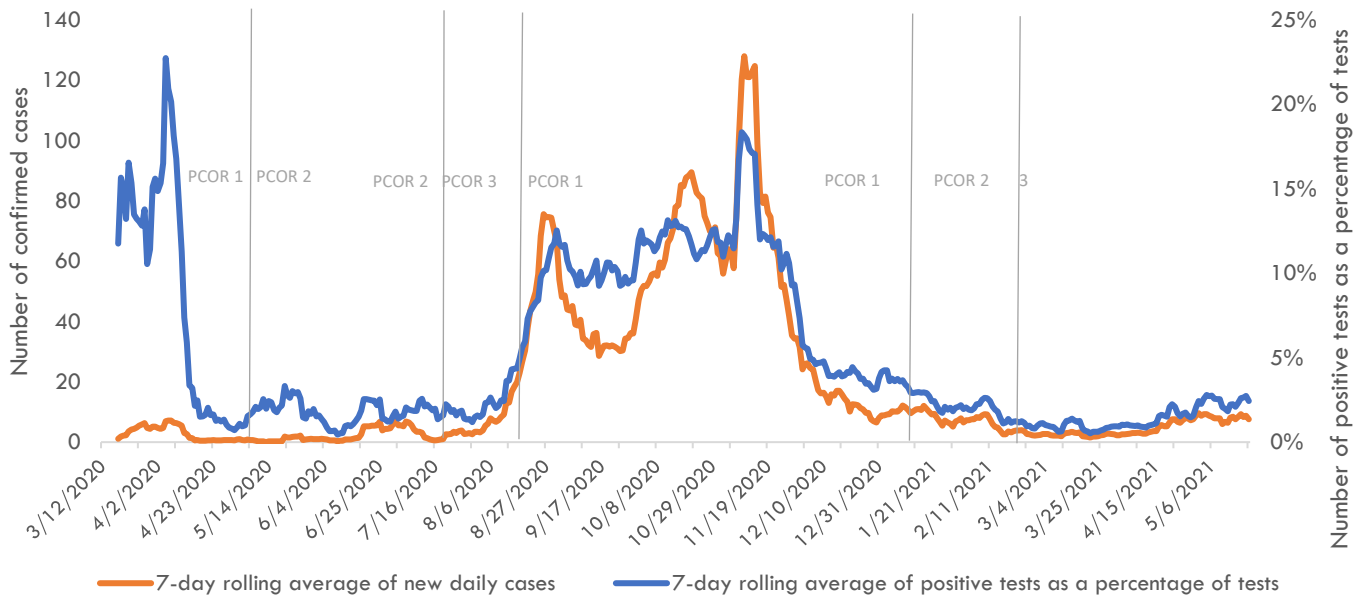


Guam COVID-19 Situation Report - 213

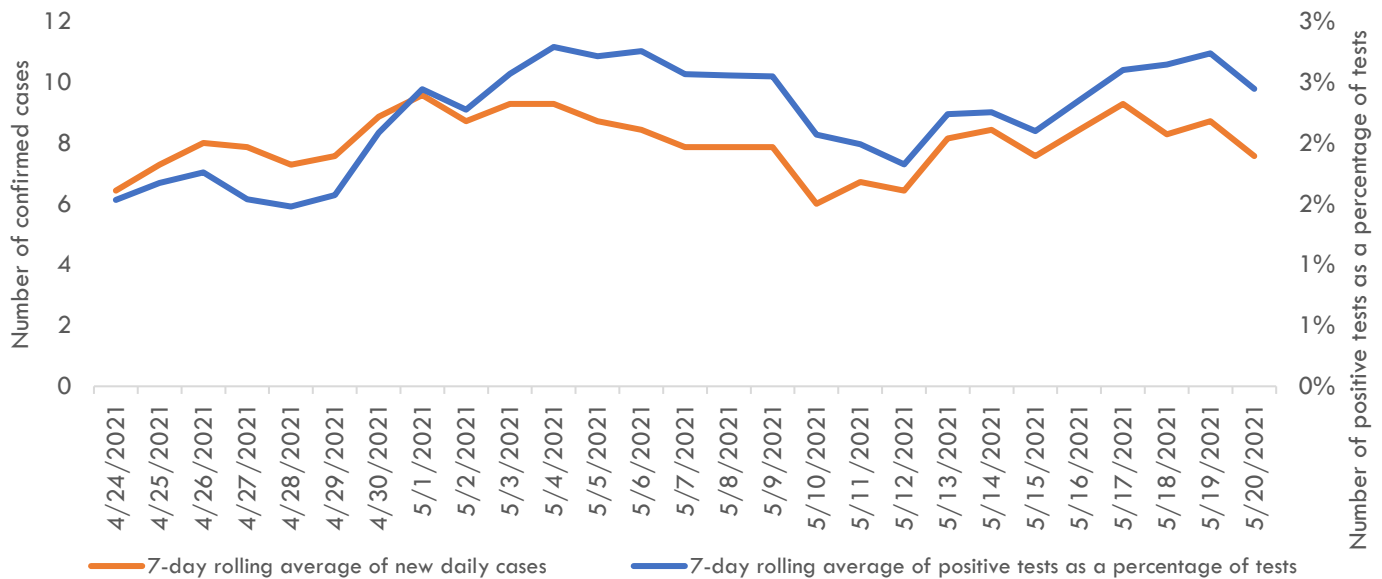
March 12, 2020 – May 21, 2021

Pandemic Condition of Readiness Assessment

Triggers for PCOR - Cases, March 12, 2020–May 20, 2021



Triggers for PCOR - Cases, Previous 28 days



† Criteria for release from isolation

For persons with mild to moderate illness who are not severely immunocompromised:

For persons having symptoms: At least 3 days have passed since recovery defined as resolution of fever without the use of fever-reducing medications and improvement in respiratory symptoms (e.g., cough, shortness of breath) and any other symptoms attributed to COVID-19 AND at least 10 days have passed since symptoms first appeared—or since recurrent symptoms appeared—AND at least 10 days have passed since the date of their first (or most recent) positive COVID-19 diagnostic test.

For persons without symptoms: At least 10 days have passed since the date of their first (or most recent) positive COVID-19 diagnostic test assuming they have not subsequently developed symptoms since their positive test.

For persons with severe to critical illness or who are severely immunocompromised:

For persons having symptoms: At least 10 days have passed since symptoms first appeared, up to 20 days.

For persons without symptoms: At least 10 days have passed since the date of their first positive COVID-19 diagnostic test, up to 20 days.