

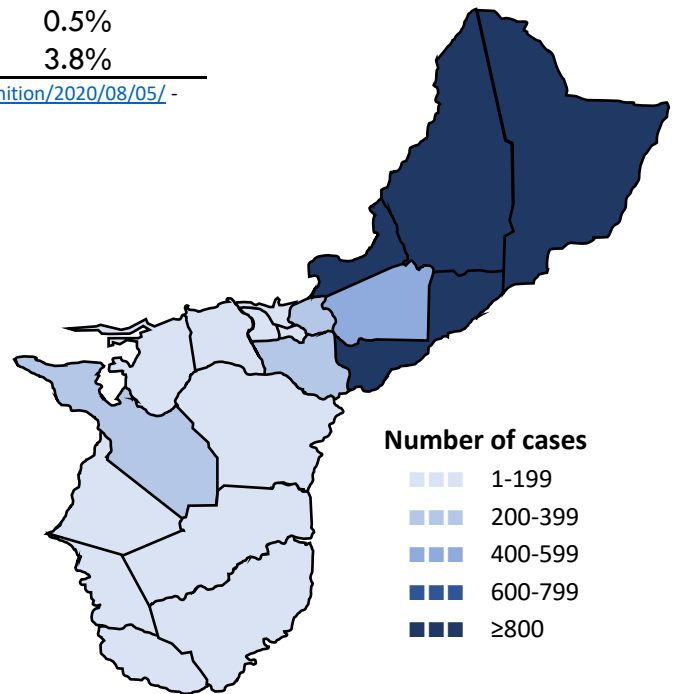


Guam COVID-19 Situation Report - 215

March 12, 2020 – June 4, 2021

COVID-19 Case Count*	Total	Past 7 days	% Increase
COVID-19 Cases	8,204	48	0.6%
Confirmed cases	7,957	39	0.5%
Probable cases	247	9	3.8%

COVID-19 Cases
Primary Reported Residence



*<https://www.cdc.gov/nndss/conditions/coronavirus-disease-2019-covid-19/case-definition/2020/08/05/> - CSTE/CDC COVID-19 case definition (August 5, 2020)

Summary

As of June 4, 2021, there have been 8,204 cases of COVID-19 reported on Guam. Forty-eight (48) new cases of COVID-19 were reported to DPHSS from May 28 - June 3: 39 confirmed cases and nine probable cases. No COVID-19 case was reported deceased since the last situation report.

Confirmed cases - past 7 days: 39 cases tested positive by molecular testing - 23 at GPHL, five at DoD, three at DLS, three at GRMC, two at GMHA, two at GRC, and one at an out-of-state laboratory.

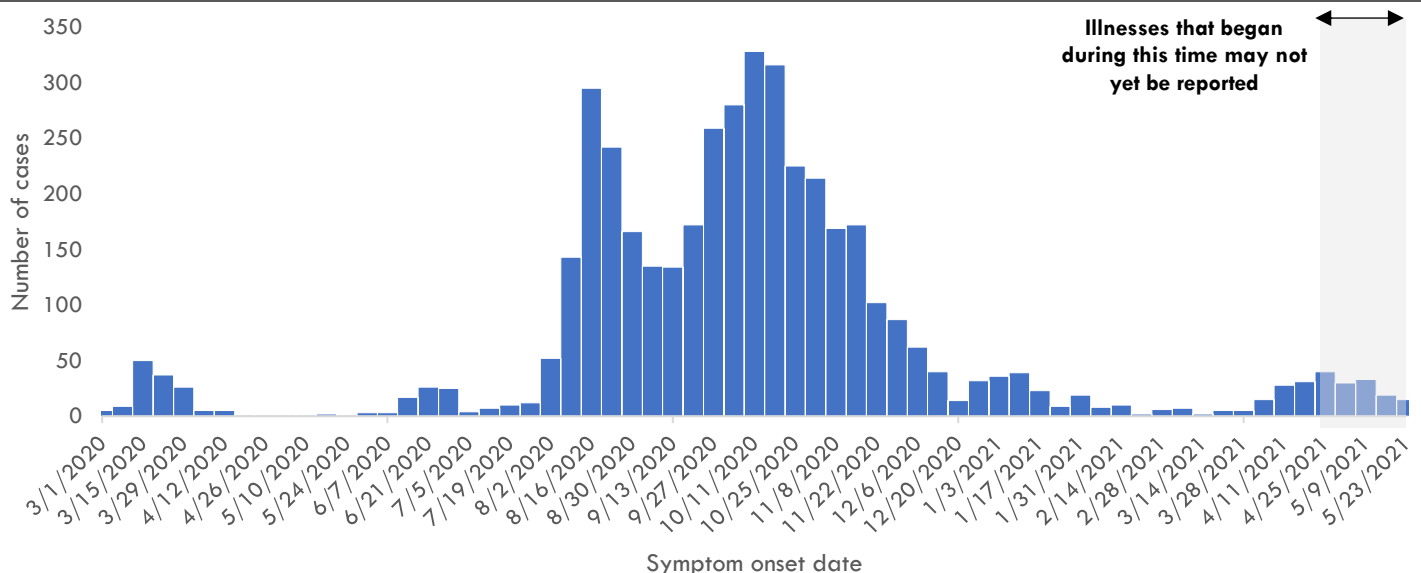
Probable cases - past 7 days: 9 cases tested positive by antigen testing - nine at GPHL.

21 new cases were identified through contact tracing. Five cases reported recent travel— four from the U.S. and one from Singapore — where four were identified in quarantine. 38 cases were reported released from isolation.

COVID-19 Testing on Guam**	Total	Tests reported past 7 days	% pos. past 7 days***
COVID-19 Tests	167,895	2,652	1.8%
Molecular Tests	155,343	2,452	1.5%
Antigen Tests	12,167	196	4.6%
Serology Tests	385	4	0.0%

See COVID-19 Testing Breakdown for all testing definitions. New tests reported reflects the number of tests reported to DPHSS since the previous report and does not necessarily indicate the number of specimens run in the same time frame. *7-day rolling average of positive tests as a percentage of tests

COVID-19 cases by symptom onset date, Guam





Guam COVID-19 Situation Report - 215

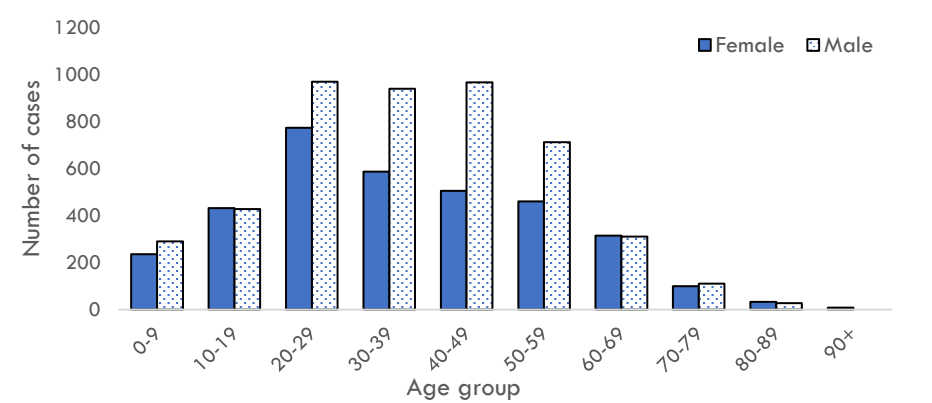
March 12, 2020 – June 4, 2021

Case Breakdown

Status	Sex	Current isolation location
COVID-19 deaths	Female	Hospital
Cases in active isolation†	Male	Home
Cases not in isolation‡	Age Group	Isolation facility
Civilian	0-9	Military
Military service member	10-19	Epi-Link to COVID-19 case**
Travel History¶	20-29	Household contact
US	30-39	Workplace contact
Dubai	40-49	Community contact
Japan	50-59	Healthcare contact
Mexico	60-69	Residence
Philippines	70-79	North
Other	80-89	Central
Identified in quarantine	90+	South
		Homeless
		Non-resident

Note: Data for recent cases are preliminary and are updated based on findings from case investigations. Residence unknown for 273 cases.

COVID-19 cases by age group and sex



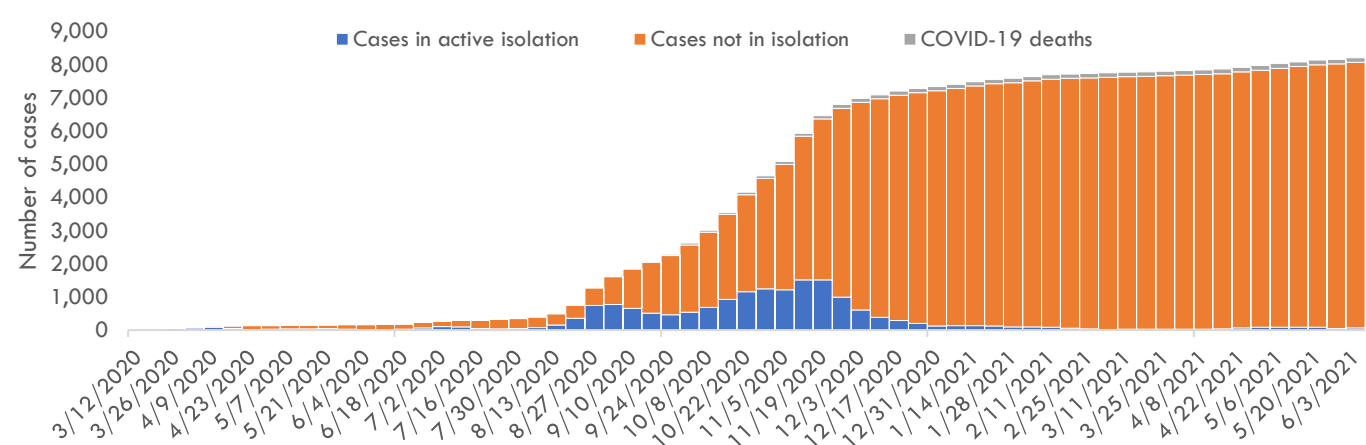
† Cases that test positive for COVID-19 through follow-up molecular testing return to active isolation.

‡ Cases not in isolation indicates the number of COVID-19 cases that are no longer in active isolation based on criteria outlined on page 4. Generally, the criteria assess time since COVID-19 symptom resolution and the date of their most recent positive diagnostic test to qualify for release from isolation.

¶ In the 14 days before symptom onset. Some cases traveled to more than one country.

** Some cases have more than one link to other COVID-19 cases.

Number of cases in active isolation, cases not in isolation, and COVID-19 deaths, Guam





Guam COVID-19 Situation Report - 215

March 12, 2020 – June 4, 2021

COVID-19 TESTING BREAKDOWN

MOLECULAR TESTS	TOTAL	TOTAL POSITIVES*	NEW TESTS	NEW POSITIVES
Guam Public Health Laboratory	75,382	4,485	1,207	23
Department of Defense	24,708	766	280	5
Diagnostic Laboratory Services	18,110	1,062	342	3
Guam Memorial Hospital Authority	14,542	522	253	2
Guam Regional Medical City	12,466	420	234	3
Private Clinics**	10,118	626	136	3
Guam National Guard Laboratory	17	0	0	0

ANTIGEN TESTS	TOTAL	TOTAL POSITIVES	NEW TESTS	NEW POSITIVES
Guam Public Health Laboratory	8,002	127	172	9
Private Clinics***	4,165	170	24	0

SEROLOGY TESTS	TOTAL	TOTAL POSITIVES	NEW TESTS	NEW POSITIVES
Diagnostic Laboratory Services	359	30	4	0
Department of Defense	26	2	0	0

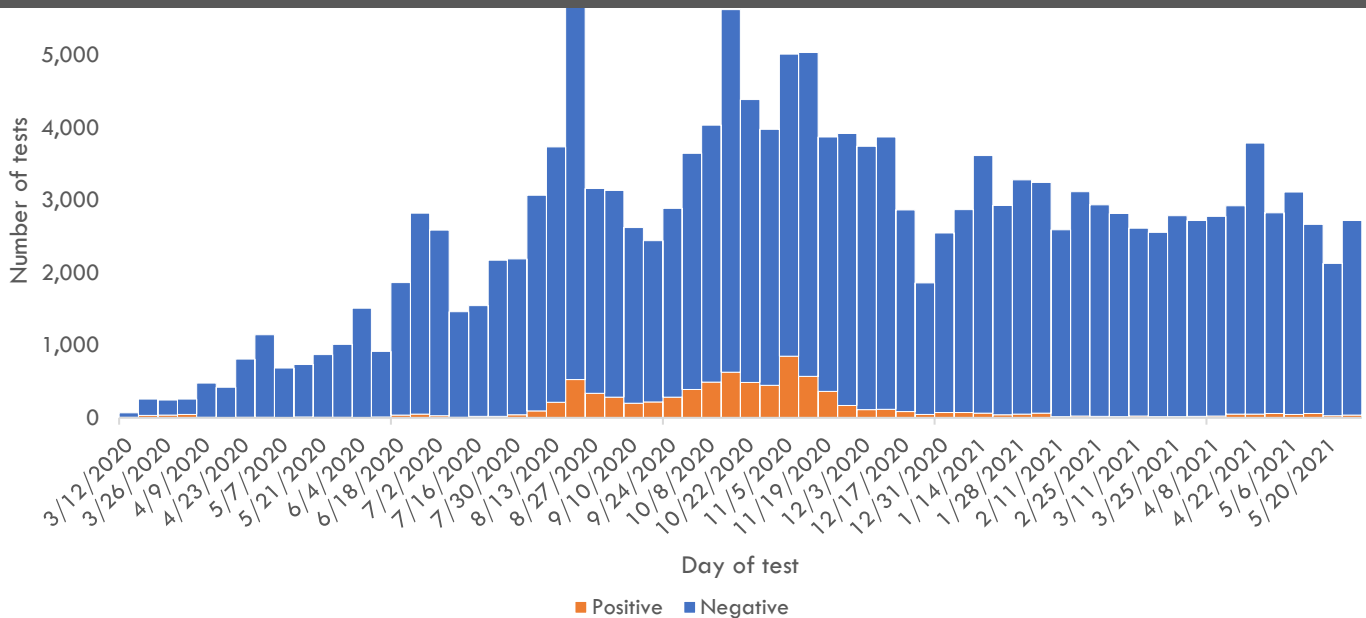
Total tests is defined as the number of specimens with conclusive results. New tests reported today is defined as the total tests reported to DPHSS since the last Situation Report. Percent positive is defined as number of positive specimens, out of all specimens tested. Total positives is defined as the number of positive specimens.

*Six additional confirmed cases tested positive through molecular testing at an out-of-state laboratory.

**Clinics included: American Medical Center, Guam Medical Care, Guam Radiology Consultants, Dr. Sheih's Clinic, US Marshalls Service, One Love Pediatrics, and Off-Island Clinics.

***Clinics included: American Medical Center, Central Medical Clinic, ExpressCare, IHP Medical Group, Evergreen Health Center, Cancer Center of Guam, Department of Corrections, Health Services of the Pacific, Tumon Medical Office, and Guam Medical Care.

COVID-19 testing by day of test, Guam



CONTACT INVESTIGATIONS	TOTAL	PAST 7 DAYS
Contacts identified by DPHSS	14,217	134
Contacts notified by DPHSS	7,706	94
Contacts tested by DPHSS	4,819	39
Cases identified through contact tracing	3,074	21

Note: Data for recent cases are preliminary and are updated based on findings from case investigations.

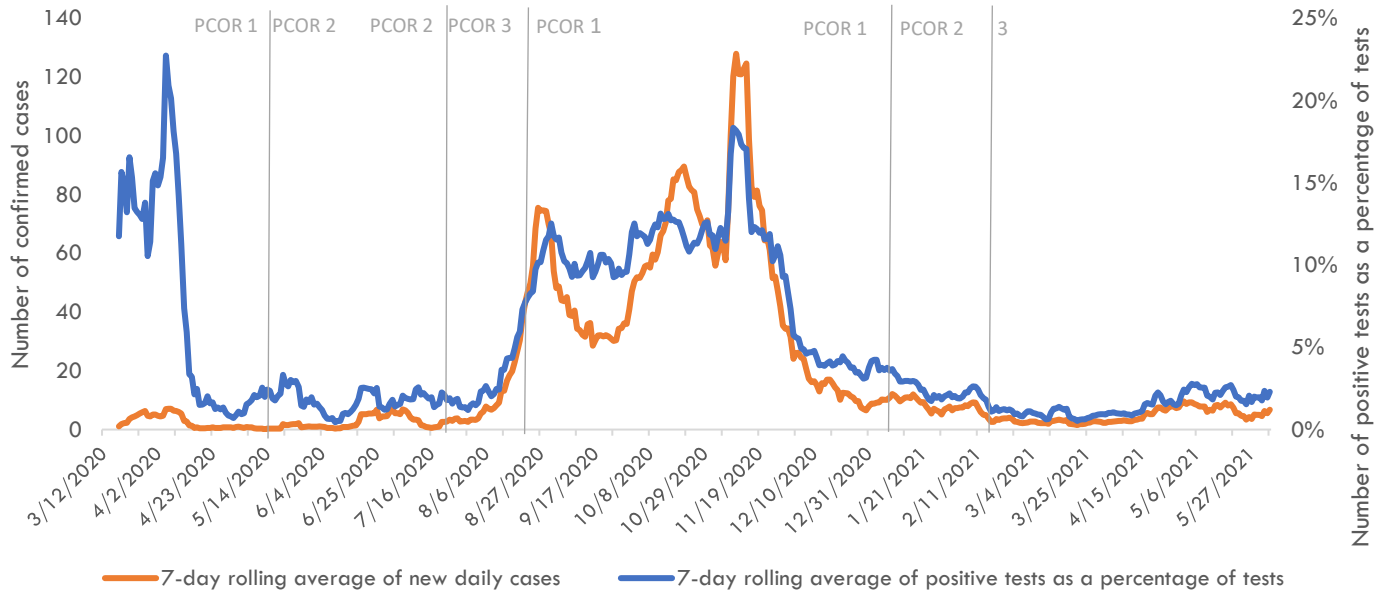


Guam COVID-19 Situation Report - 215

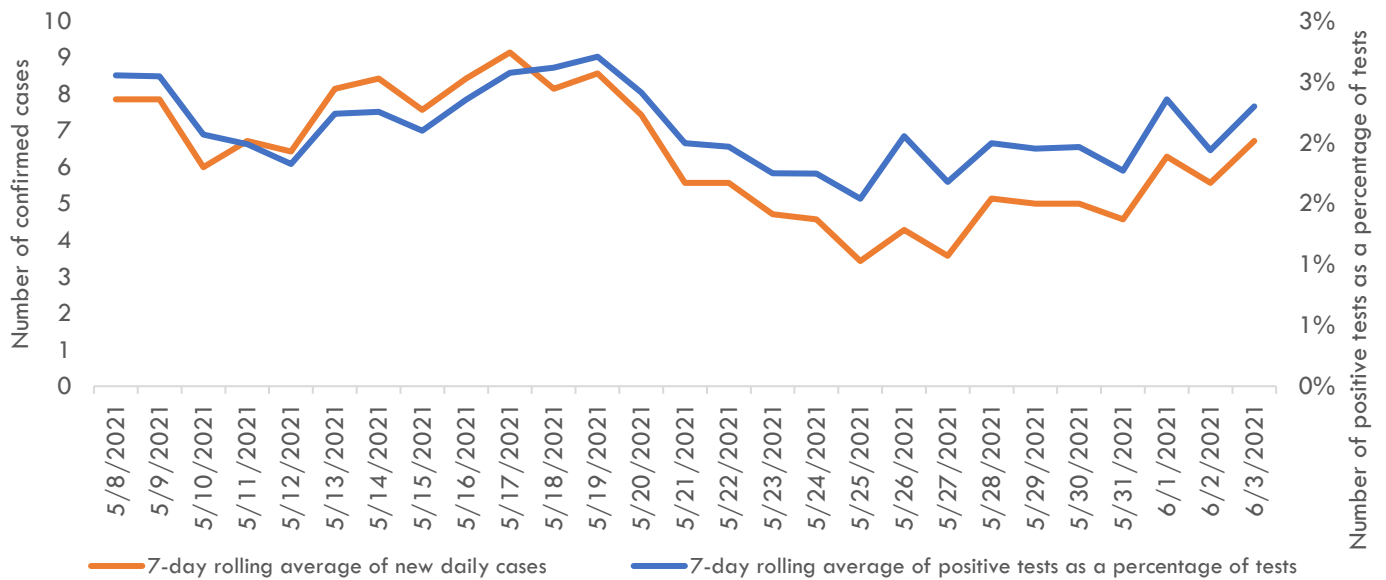
March 12, 2020 – June 4, 2021

Pandemic Condition of Readiness Assessment

Triggers for PCOR - Cases, March 12, 2020–June 3, 2021



Triggers for PCOR - Cases, Previous 28 days



† Criteria for release from isolation

For persons with mild to moderate illness who are not severely immunocompromised:

For persons having symptoms: At least 3 days have passed since recovery defined as resolution of fever without the use of fever-reducing medications and improvement in respiratory symptoms (e.g., cough, shortness of breath) and any other symptoms attributed to COVID-19 AND at least 10 days have passed since symptoms first appeared—or since recurrent symptoms appeared—AND at least 10 days have passed since the date of their first (or most recent) positive COVID-19 diagnostic test.

For persons without symptoms: At least 10 days have passed since the date of their first (or most recent) positive COVID-19 diagnostic test assuming they have not subsequently developed symptoms since their positive test.

For persons with severe to critical illness or who are severely immunocompromised:

For persons having symptoms: At least 10 days have passed since symptoms first appeared, up to 20 days.

For persons without symptoms: At least 10 days have passed since the date of their first positive COVID-19 diagnostic test, up to 20 days.