

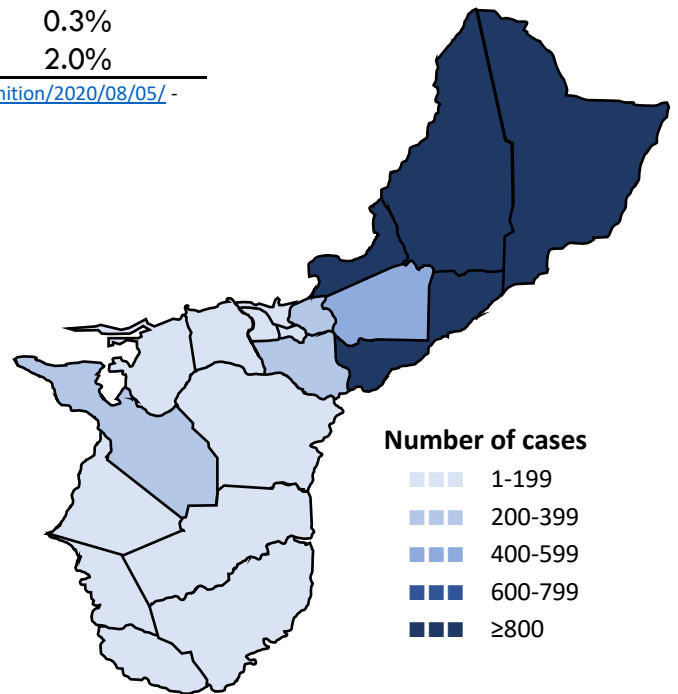


# Guam COVID-19 Situation Report - 216

## March 12, 2020 – June 11, 2021

COVID-19 Case Count*	Total	Past 7 days	% Increase
COVID-19 Cases	<b>8,236</b>	<b>32</b>	<b>0.4%</b>
Confirmed cases	7,984	27	0.3%
Probable cases	252	5	2.0%

COVID-19 Cases  
Primary Reported Residence



\*<https://www.cdc.gov/nndss/conditions/coronavirus-disease-2019-covid-19/case-definition/2020/08/05/> - CSTE/CDC COVID-19 case definition (August 5, 2020)

### Summary

As of June 11, 2021, there have been 8,236 cases of COVID-19 reported on Guam. Thirty-two (32) new cases of COVID-19 were reported to DPHSS from June 4 - June 10: 27 confirmed cases and five probable cases. No COVID-19 case was reported deceased since the last situation report.

Confirmed cases - past 7 days: 32 cases tested positive by molecular testing - 15 at GPLH, three at DLS, three at GMHA, two at GRMC, two at GRC, and two at DoD.

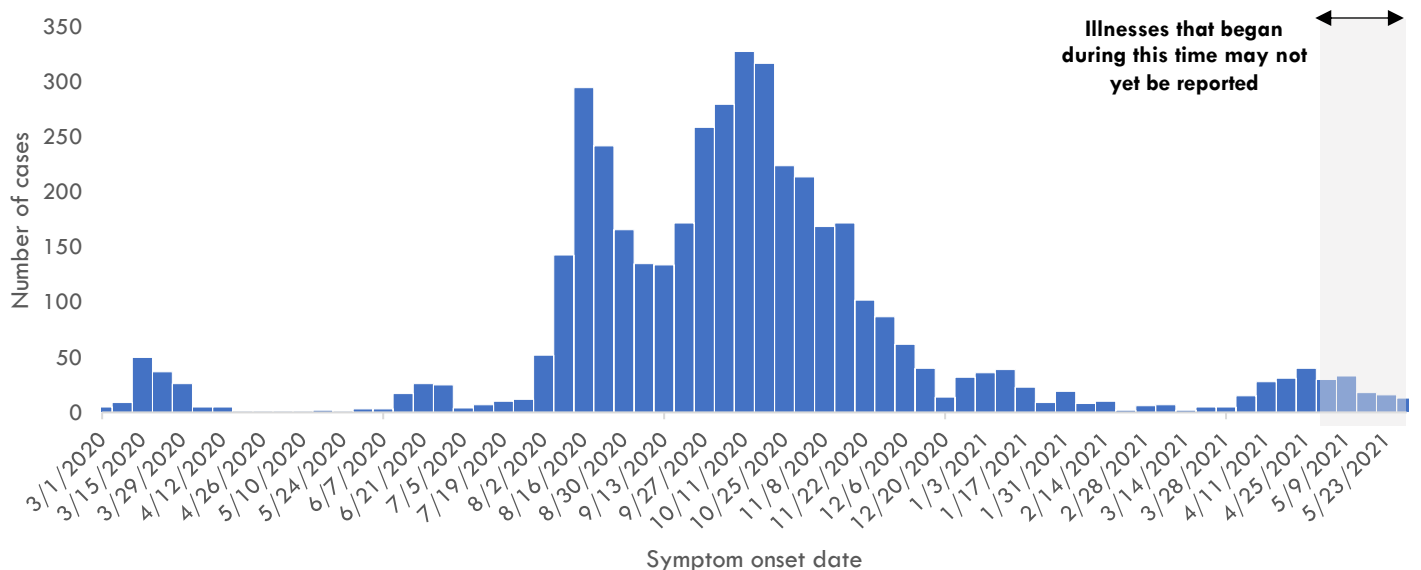
Probable cases - past 7 days: Five cases tested positive by antigen testing - four at GPLH and one at CCOG.

11 new cases were identified through contact tracing. Four cases reported recent travel— two from the U.S, one from India, and one from Afghanistan — where three were identified in quarantine. 30 cases were reported released from isolation.

COVID-19 Testing on Guam**	Total	Tests reported past 7 days	% pos. past 7 days***
COVID-19 Tests	171,504	2,818	1.5%
Molecular Tests	158,580	2,501	1.5%
Antigen Tests	12,537	315	1.6%
Serology Tests	387	2	0.0%

\*\*See COVID-19 Testing Breakdown for all testing definitions. New tests reported reflects the number of tests reported to DPHSS since the previous report and does not necessarily indicate the number of specimens run in the same time frame. \*\*\*7-day rolling average of positive tests as a percentage of tests

### COVID-19 cases by symptom onset date, Guam





# Guam COVID-19 Situation Report - 216

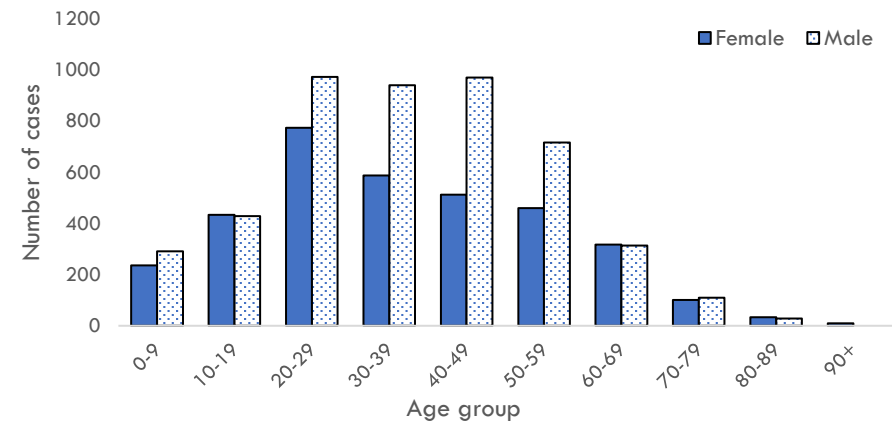
## March 12, 2020 – June 11, 2021

### Case Breakdown

Status	Sex	Current isolation location
COVID-19 deaths	Female	Hospital
Cases in active isolation†	Male	Home
Cases not in isolation‡	<b>Age Group</b>	Isolation facility
Civilian	0-9	Military
Military service member	10-19	<b>Epi-Link to COVID-19 case**</b>
<b>Travel History¶</b>	20-29	Household contact
US	30-39	Workplace contact
Dubai	40-49	Community contact
Japan	50-59	Healthcare contact
Mexico	60-69	<b>Residence</b>
Philippines	70-79	North
Other	80-89	Central
<b>Identified in quarantine</b>	90+	South
		Homeless
		Non-resident

Note: Data for recent cases are preliminary and are updated based on findings from case investigations. Residence unknown for 273 cases.

### COVID-19 cases by age group and sex



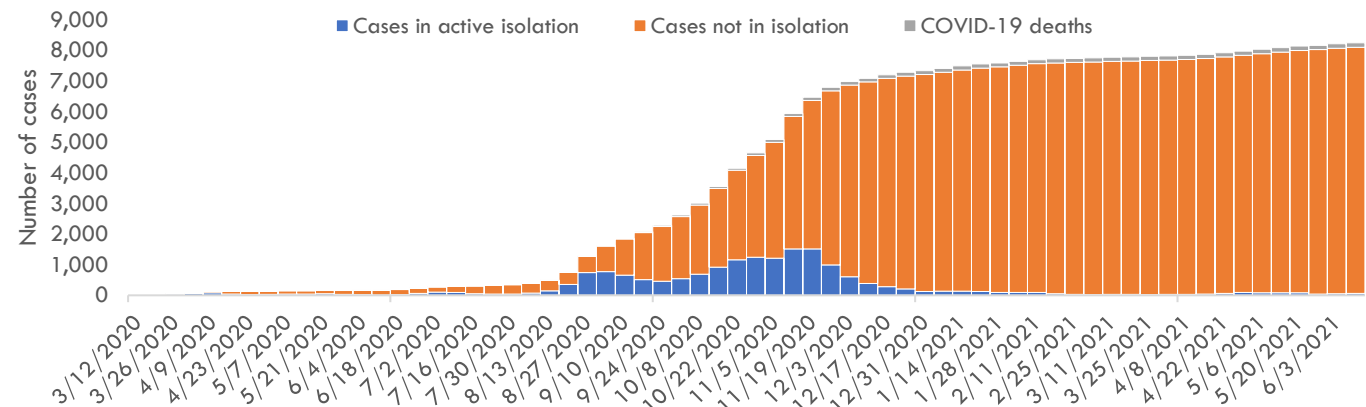
† Cases that test positive for COVID-19 through follow-up molecular testing return to active isolation.

‡ Cases not in isolation indicates the number of COVID-19 cases that are no longer in active isolation based on criteria outlined on page 4. Generally, the criteria assess time since COVID-19 symptom resolution and the date of their most recent positive diagnostic test to qualify for release from isolation.

¶ In the 14 days before symptom onset. Some cases traveled to more than one country.

\*\* Some cases have more than one link to other COVID-19 cases.

### Number of cases in active isolation, cases not in isolation, and COVID-19 deaths, Guam





# Guam COVID-19 Situation Report - 216

## March 12, 2020 – June 11, 2021

### COVID-19 TESTING BREAKDOWN

MOLECULAR TESTS	TOTAL	TOTAL POSITIVES*	NEW TESTS	NEW POSITIVES
<b>Guam Public Health Laboratory</b>	77,276	4,499	1,163	15
<b>Department of Defense</b>	25,139	769	431	2
<b>Diagnostic Laboratory Services</b>	18,398	1,065	288	3
<b>Guam Memorial Hospital Authority</b>	14,837	525	295	3
<b>Guam Regional Medical City</b>	12,693	422	227	2
<b>Private Clinics**</b>	10,220	629	97	2
<b>Guam National Guard Laboratory</b>	17	0	0	0
ANTIGEN TESTS	TOTAL	TOTAL POSITIVES	NEW TESTS	NEW POSITIVES
<b>Guam Public Health Laboratory</b>	8,228	131	226	4
<b>Private Clinics***</b>	4,309	172	89	1
SEROLOGY TESTS	TOTAL	TOTAL POSITIVES	NEW TESTS	NEW POSITIVES
<b>Diagnostic Laboratory Services</b>	361	30	2	0
<b>Department of Defense</b>	26	2	0	0

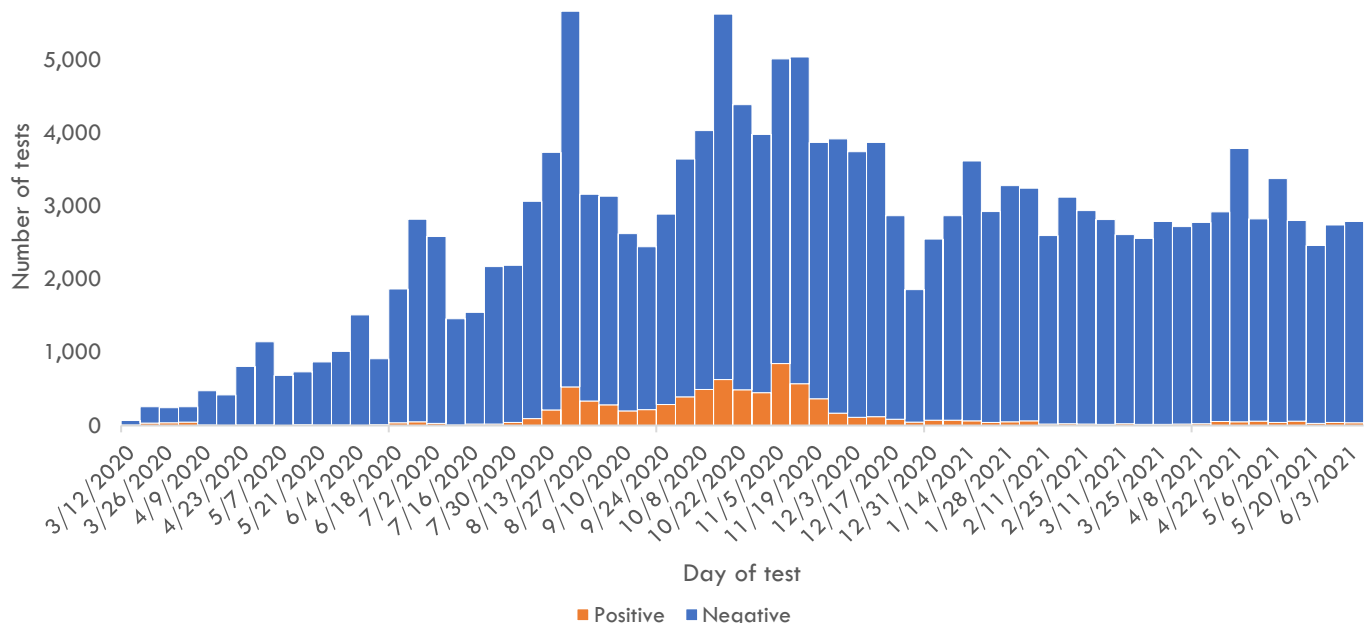
Total tests is defined as the number of specimens with conclusive results. New tests reported today is defined as the total tests reported to DPHSS since the last Situation Report. Percent positive is defined as number of positive specimens, out of all specimens tested. Total positives is defined as the number of positive specimens.

\*Six additional confirmed cases tested positive through molecular testing at an out-of-state laboratory.

\*\*Clinics included: American Medical Center, Guam Medical Care, Guam Radiology Consultants, Dr. Sheih's Clinic, US Marshalls Service, One Love Pediatrics, and Off-Island Clinics.

\*\*\*Clinics included: American Medical Center, Central Medical Clinic, ExpressCare, IHP Medical Group, Evergreen Health Center, Cancer Center of Guam, Department of Corrections, Health Services of the Pacific, Tumon Medical Office, and Guam Medical Care.

### COVID-19 testing by day of test, Guam



CONTACT INVESTIGATIONS	TOTAL	PAST 7 DAYS
<b>Contacts identified by DPHSS</b>	14,354	137
<b>Contacts notified by DPHSS</b>	7,757	51
<b>Contacts tested by DPHSS</b>	4,846	27
<b>Cases identified through contact tracing</b>	3,084	11

Note: Data for recent cases are preliminary and are updated based on findings from case investigations.

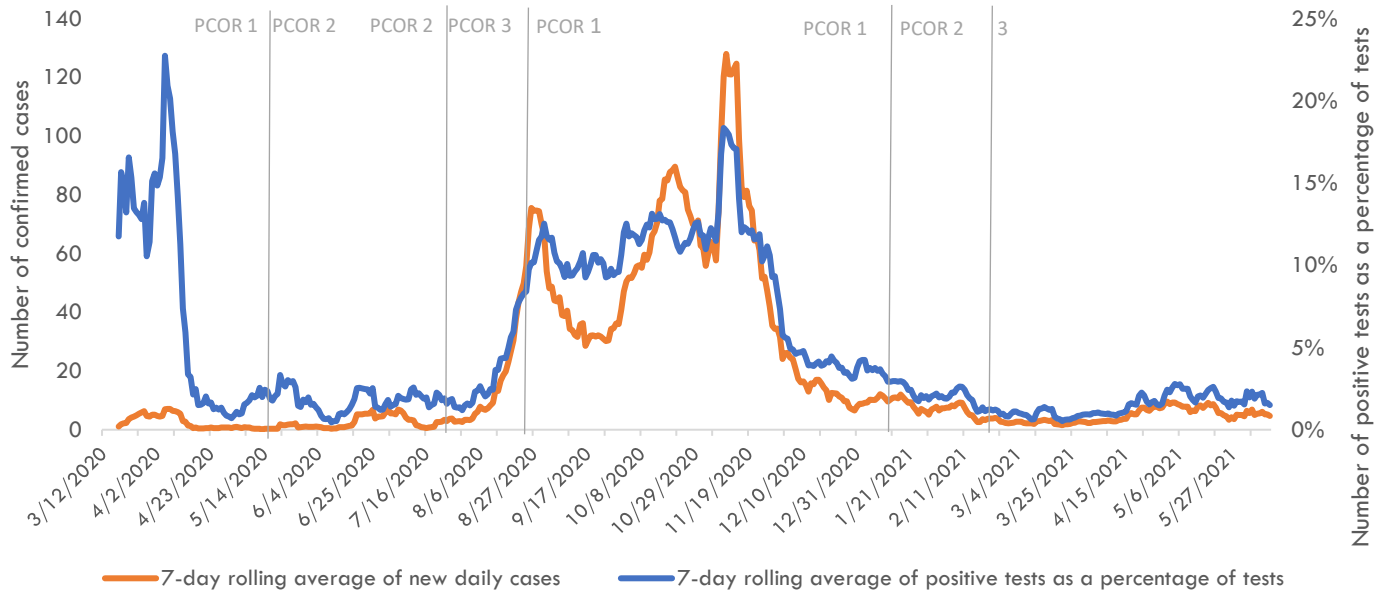


# Guam COVID-19 Situation Report - 216

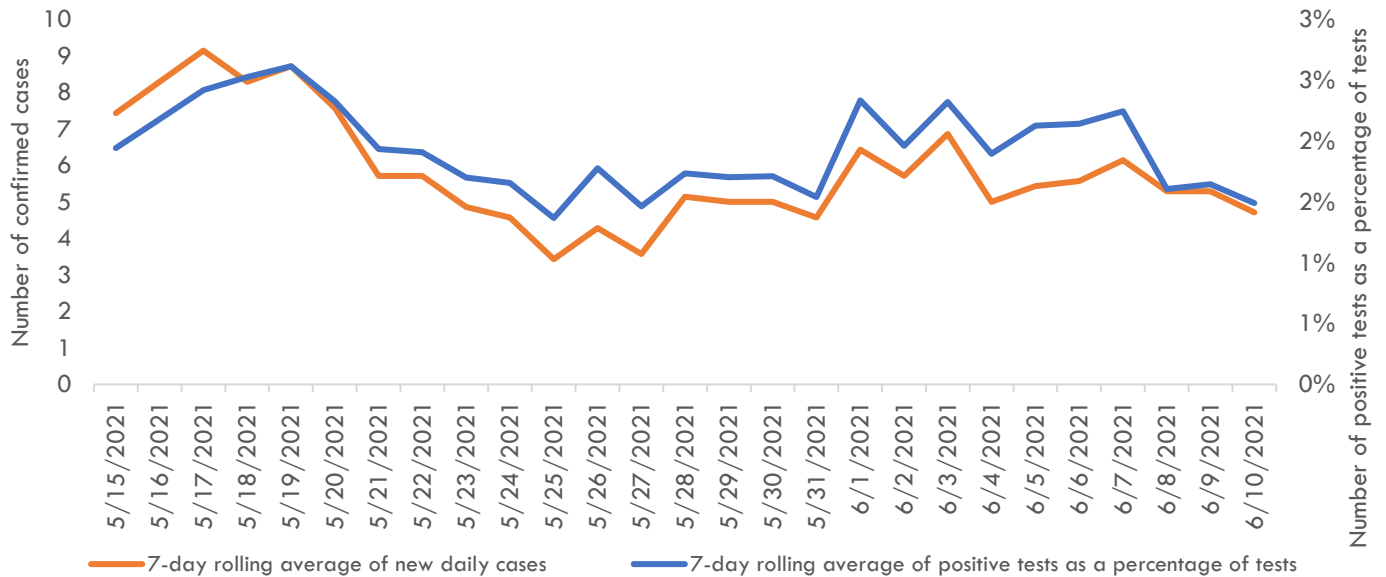
## March 12, 2020 – June 11, 2021

### Pandemic Condition of Readiness Assessment

Triggers for PCOR - Cases, March 12, 2020–June 10, 2021



Triggers for PCOR - Cases, Previous 28 days



**† Criteria for release from isolation**

*For persons with mild to moderate illness who are not severely immunocompromised:*

For persons having symptoms: At least 3 days have passed since recovery defined as resolution of fever without the use of fever-reducing medications and improvement in respiratory symptoms (e.g., cough, shortness of breath) and any other symptoms attributed to COVID-19 AND at least 10 days have passed since symptoms first appeared—or since recurrent symptoms appeared—AND at least 10 days have passed since the date of their first (or most recent) positive COVID-19 diagnostic test.

For persons without symptoms: At least 10 days have passed since the date of their first (or most recent) positive COVID-19 diagnostic test assuming they have not subsequently developed symptoms since their positive test.

*For persons with severe to critical illness or who are severely immunocompromised:*

For persons having symptoms: At least 10 days have passed since symptoms first appeared, up to 20 days.

For persons without symptoms: At least 10 days have passed since the date of their first positive COVID-19 diagnostic test, up to 20 days.