

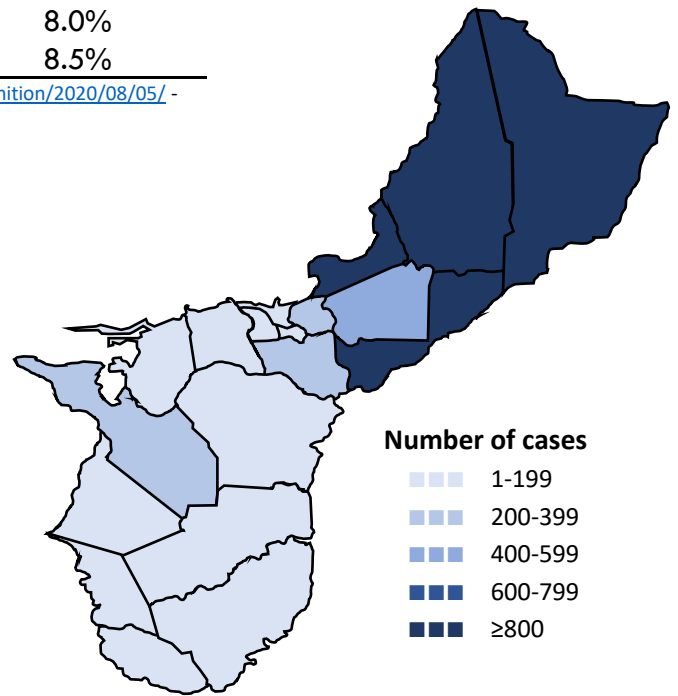


Guam COVID-19 Situation Report - 227

March 12, 2020 – August 27, 2021

COVID-19 Case Count*	Total	Past 7 days	% Increase
COVID-19 Cases	10,046	748	8.0%
Confirmed cases	9,676	719	8.0%
Probable cases	370	29	8.5%

COVID-19 Cases
Primary Reported Residence



*<https://www.cdc.gov/nndss/conditions/coronavirus-disease-2019-covid-19/case-definition/2020/08/05/> - CSTE/CDC COVID-19 case definition (August 5, 2020)

Summary

As of August 27, 2021, there have been 10,046 cases of COVID-19 reported on Guam. Seven-hundred forty-eight (748) new cases of COVID-19 were reported to DPHSS from August 20 - August 26: 719 confirmed cases and 29 probable cases. One COVID-19 case was reported deceased since the last situation report; total 145 deaths.

Confirmed cases - past 7 days: 719 cases tested positive by molecular testing - 463 at GPHL, 73 at DoD, 50 at AMC, 43 at GRC, 38 at DLS, 30 at GRMC, 20 at GMHA, and two at ECC.

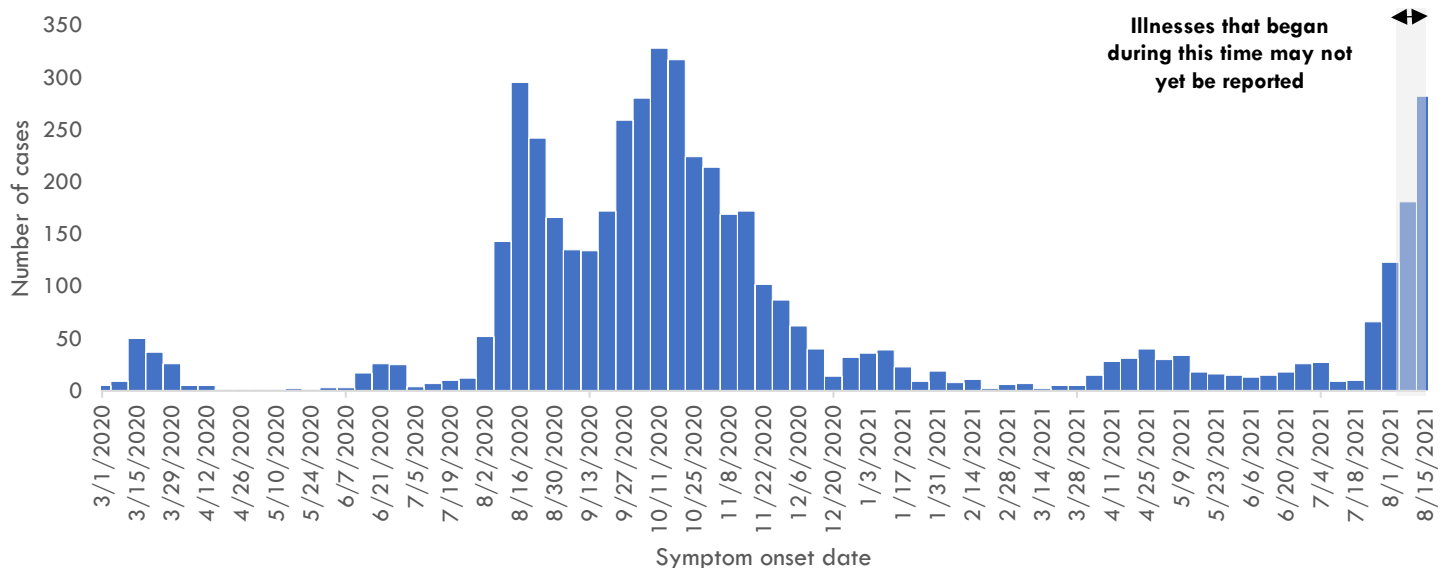
Probable cases - past 7 days: 29 cases tested positive by antigen testing - 15 at ECC, five at IHP, three at ISC, two at TMO, two at JOG, one at MPG, and one at GFD.

328 new cases were identified through contact tracing. 14 cases reported recent travel— Seven from the US, three from the Philippines, one from India, one from Japan, one from Italy, and one from Palau — where one was identified in quarantine. 246 cases were reported released from isolation.

COVID-19 Testing on Guam**	Total	Tests reported past 7 days	% pos. past 7 days***
COVID-19 Tests	212,182	8,184	9.8%
Molecular Tests	196,225	7,965	9.7%
Antigen Tests	15,558	215	14.9%
Serology Tests	399	4	50.0%

See COVID-19 Testing Breakdown for all testing definitions. New tests reported reflects the number of tests reported to DPHSS since the previous report and does not necessarily indicate the number of specimens run in the same time frame. *7-day rolling average of positive tests as a percentage of tests

COVID-19 cases by symptom onset date, Guam





Guam COVID-19 Situation Report - 227

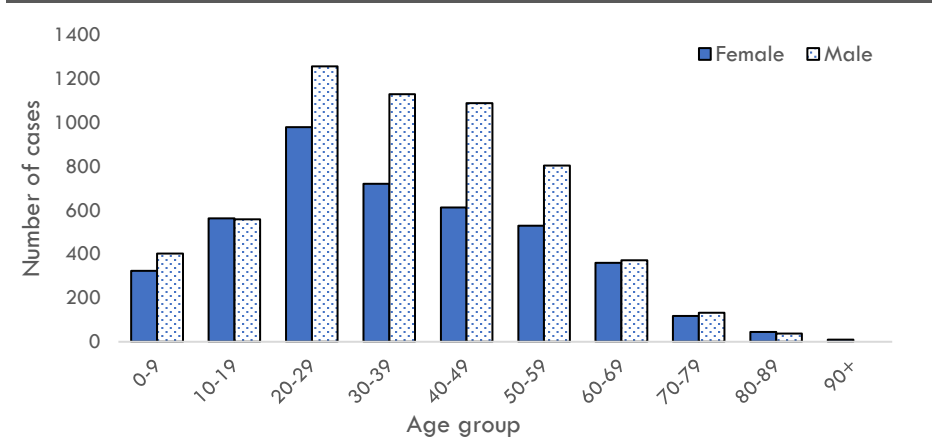
March 12, 2020 – August 27, 2021

Case Breakdown

Status	Sex	Current isolation location
COVID-19 deaths	Female	Hospital
Cases in active isolation†	Male	Home
Cases not in isolation‡	Age Group	Isolation facility
Civilian	0-9	Military
Military service member	10-19	Epi-Link to COVID-19 case**
Travel History¶	20-29	Household contact
US	30-39	Workplace contact
Dubai	40-49	Community contact
Japan	50-59	Healthcare contact
Mexico	60-69	Residence
Philippines	70-79	North
Other	80-89	Central
Identified in quarantine	90+	South
		Homeless
		Non-resident

Note: Data for recent cases are preliminary and are updated based on findings from case investigations. Residence unknown for 273 cases.

COVID-19 cases by age group and sex



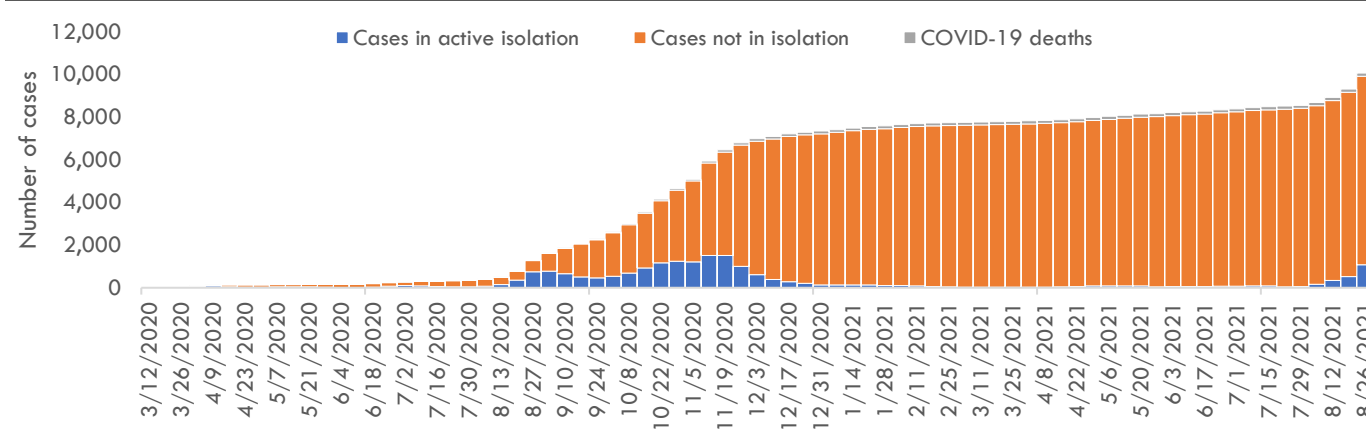
† Cases that test positive for COVID-19 through follow-up molecular testing return to active isolation.

‡ Cases not in isolation indicates the number of COVID-19 cases that are no longer in active isolation based on criteria outlined on page 4. Generally, the criteria assess time since COVID-19 symptom resolution and the date of their most recent positive diagnostic test to qualify for release from isolation.

¶ In the 14 days before symptom onset. Some cases traveled to more than one country.

** Some cases have more than one link to other COVID-19 cases.

Number of cases in active isolation, cases not in isolation, and COVID-19 deaths, Guam





Guam COVID-19 Situation Report - 227

March 12, 2020 – August 27, 2021

COVID-19 TESTING BREAKDOWN

MOLECULAR TESTS	TOTAL	TOTAL POSITIVES*	NEW TESTS	NEW POSITIVES
Guam Public Health Laboratory	94,384	5,470	4,897	463
Department of Defense	33,859	1,067	1,184	73
Diagnostic Laboratory Services	23,395	1,190	659	38
Guam Memorial Hospital Authority	16,330	558	138	20
Guam Regional Medical City	14,962	498	197	30
Private Clinics**	13,278	823	890	95
Guam National Guard Laboratory	17	0	0	0

ANTIGEN TESTS	TOTAL	TOTAL POSITIVES	NEW TESTS	NEW POSITIVES
Guam Public Health Laboratory	10,399	180	5	0
Private Clinics***	5,159	246	210	29

SEROLOGY TESTS	TOTAL	TOTAL POSITIVES	NEW TESTS	NEW POSITIVES
Diagnostic Laboratory Services	373	35	4	2
Department of Defense	26	2	0	0

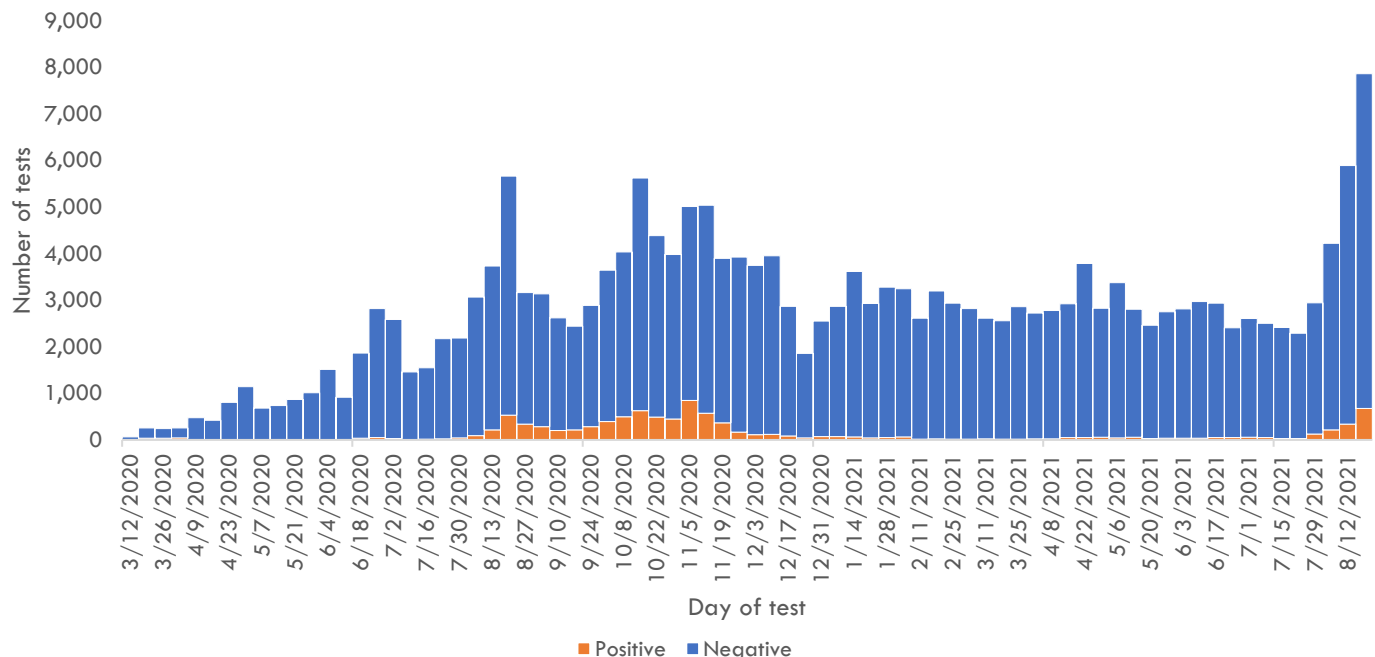
Total tests is defined as the number of specimens with conclusive results. New tests reported today is defined as the total tests reported to DPHSS since the last Situation Report. Percent positive is defined as number of positive specimens, out of all specimens tested. Total positives is defined as the number of positive specimens.

*Six additional confirmed cases tested positive through molecular testing at an out-of-state laboratory.

**Clinics included: American Medical Center, Guam Medical Care, Guam Radiology Consultants, Dr. Sheih's Clinic, US Marshalls Service, One Love Pediatrics, and Off-Island Clinics.

***Clinics included: American Medical Center, Central Medical Clinic, ExpressCare, IHP Medical Group, Evergreen Health Center, Cancer Center of Guam, Department of Corrections, Health Services of the Pacific, Tumon Medical Office, and Guam Medical Care.

COVID-19 testing by day of test, Guam



CONTACT INVESTIGATIONS	TOTAL	PAST 7 DAYS
Contacts identified by DPHSS	17,327	684
Contacts notified by DPHSS	8,556	107
Contacts tested by DPHSS	5,738	272
Cases identified through contact tracing	3,524	328

Note: Data for recent cases are preliminary and are updated based on findings from case investigations.

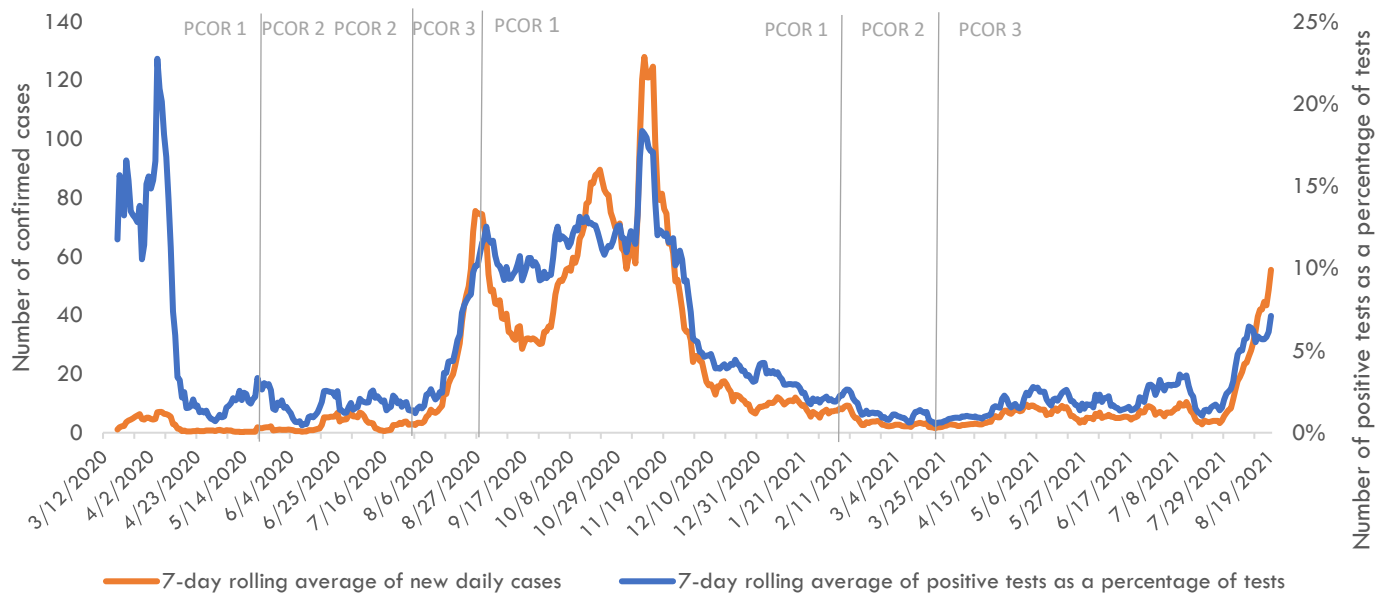


Guam COVID-19 Situation Report - 227

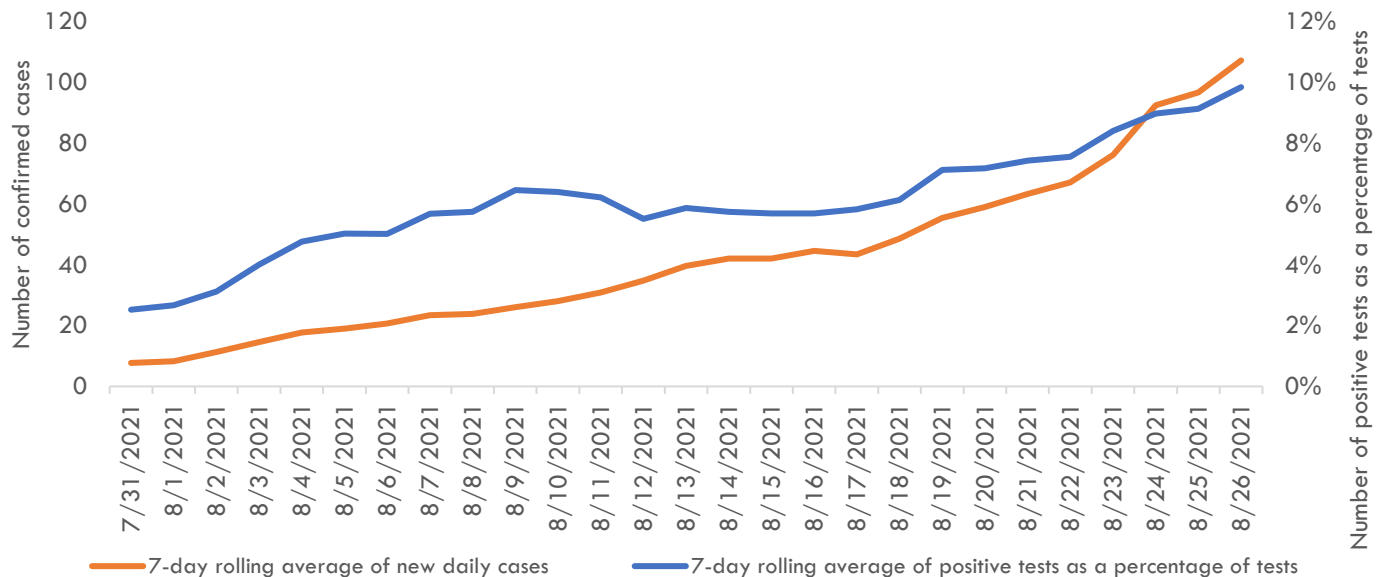
March 12, 2020 – August 27, 2021

Pandemic Condition of Readiness Assessment

Triggers for PCOR - Cases, March 12, 2020–August 26, 2021



Triggers for PCOR - Cases, Previous 28 days



† Criteria for release from isolation

For persons with mild to moderate illness who are not severely immunocompromised:

For persons having symptoms: At least 3 days have passed since recovery defined as resolution of fever without the use of fever-reducing medications and improvement in respiratory symptoms (e.g., cough, shortness of breath) and any other symptoms attributed to COVID-19 AND at least 10 days have passed since symptoms first appeared—or since recurrent symptoms appeared—AND at least 10 days have passed since the date of their first (or most recent) positive COVID-19 diagnostic test.

For persons without symptoms: At least 10 days have passed since the date of their first (or most recent) positive COVID-19 diagnostic test assuming they have not subsequently developed symptoms since their positive test.

For persons with severe to critical illness or who are severely immunocompromised:

For persons having symptoms: At least 10 days have passed since symptoms first appeared, up to 20 days.

For persons without symptoms: At least 10 days have passed since the date of their first positive COVID-19 diagnostic test, up to 20 days.