

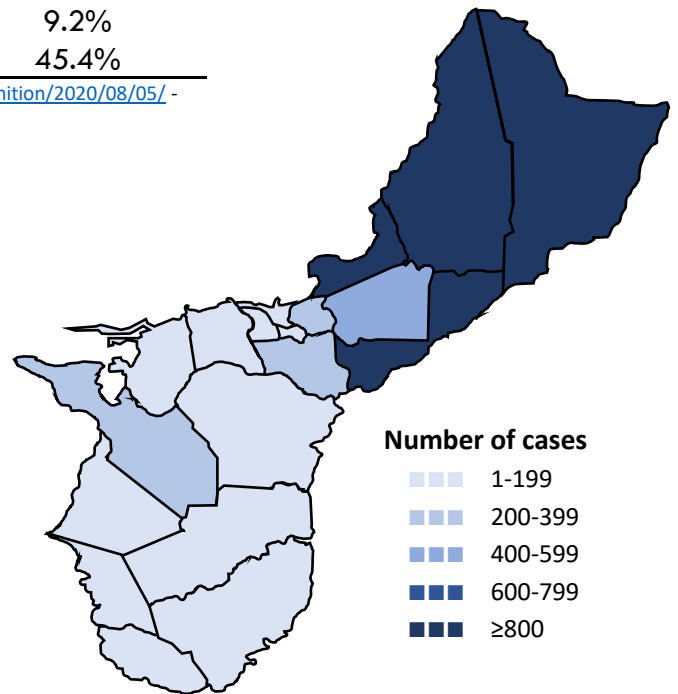


Guam COVID-19 Situation Report - 228

March 12, 2020 – September 3, 2021

COVID-19 Case Count*	Total	Past 7 days	% Increase
COVID-19 Cases	11,106	1,060	10.6%
Confirmed cases	10,566	892	9.2%
Probable cases	540	168	45.4%

COVID-19 Cases
Primary Reported Residence



*<https://www.cdc.gov/nndss/conditions/coronavirus-disease-2019-covid-19/case-definition/2020/08/05/> - CSTE/CDC COVID-19 case definition (August 5, 2020)

Summary

As of September 3, 2021, there have been 11,106 cases of COVID-19 reported on Guam. One-thousand sixty (1,060) new cases of COVID-19 were reported to DPHSS from August 27 - September 2: 892 confirmed cases and 168 probable cases. Four COVID-19 cases were reported deceased since the last situation report and a review of all death certificates for 2020 has also revealed two additional COVID-19 related deaths which were not reported to DPHSS; totaling 151 deaths.

Confirmed cases - past 7 days: 892 cases tested positive by molecular testing - 580 at GPHL, 89 at DoD, 67 at DLS, 65 at AMC, 59 at GRMC, 26 at GMHA, three at GMC, one at GFD, one at JOG, and one at GRC.

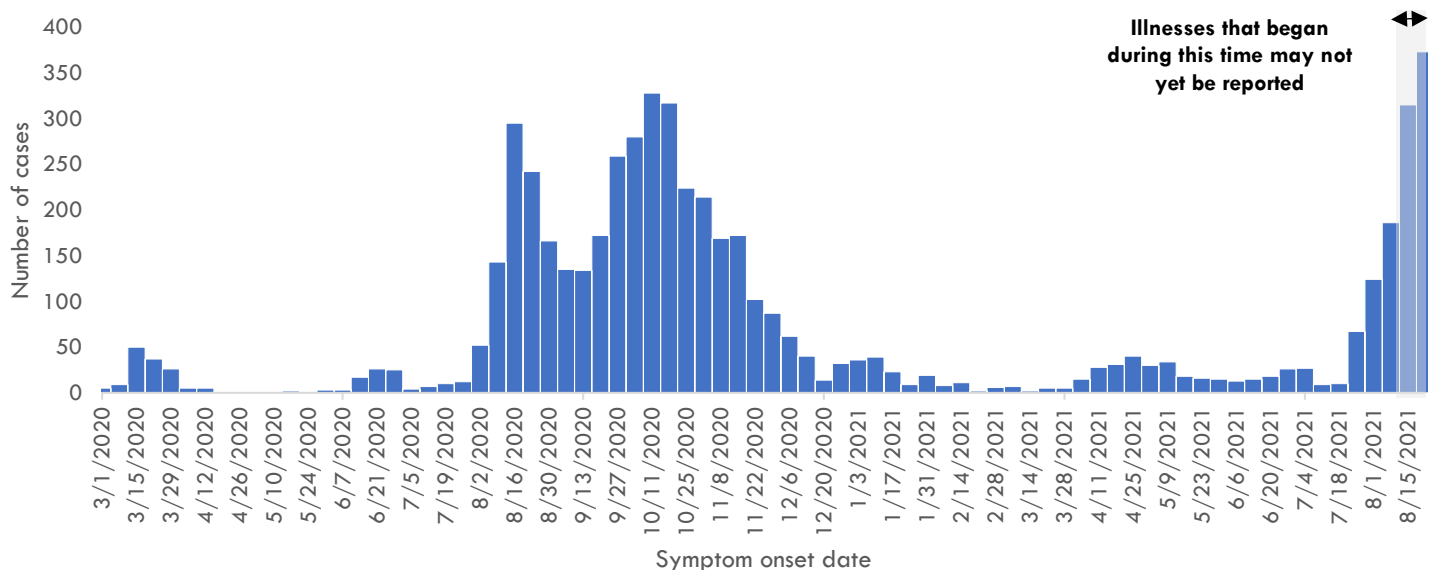
Probable cases - past 7 days: 168 cases tested positive by antigen testing - 112 at GRC, 17 at GPHL, 13 at FDMS, 12 at ECC, six at GFD, six at IHP, one at JOG, and one at DOC.

451 new cases were identified through contact tracing. 4 cases reported recent travel— all from the US. 302 cases were reported released from isolation.

COVID-19 Testing on Guam**	Total	Tests reported past 7 days	% pos. past 7 days***
COVID-19 Tests	221,709	9,348	12.3%
Molecular Tests	203,573	7,341	13.2%
Antigen Tests	17,736	2,006	8.8%
Serology Tests	400	1	100.0%

See COVID-19 Testing Breakdown for all testing definitions. New tests reported reflects the number of tests reported to DPHSS since the previous report and does not necessarily indicate the number of specimens run in the same time frame. *7-day rolling average of positive tests as a percentage of tests

COVID-19 cases by symptom onset date, Guam





Guam COVID-19 Situation Report - 228

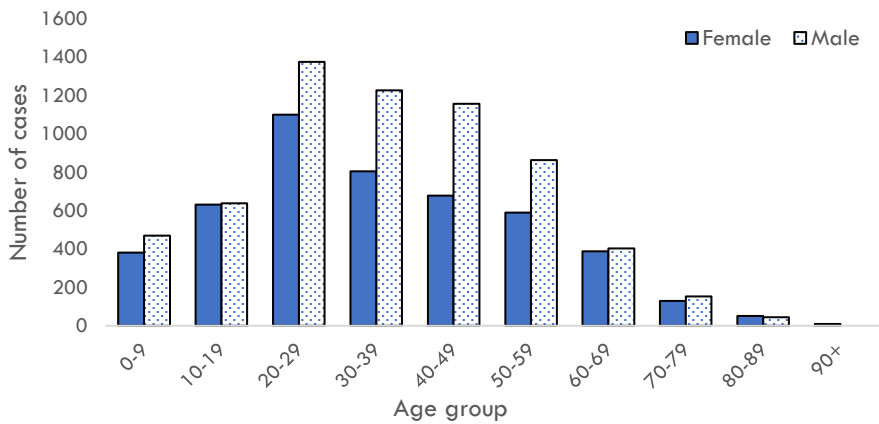
March 12, 2020 – September 3, 2021

Case Breakdown

Status	Sex	Current isolation location
COVID-19 deaths	Female	Hospital
Cases in active isolation†	Male	Home
Cases not in isolation‡	Age Group	Isolation facility
Civilian	0-9	Military
Military service member	10-19	Epi-Link to COVID-19 case**
Travel History¶	20-29	Household contact
US	30-39	Workplace contact
Dubai	40-49	Community contact
Japan	50-59	Healthcare contact
Mexico	60-69	Residence
Philippines	70-79	North
Other	80-89	Central
Identified in quarantine	90+	South
		Homeless
		Non-resident

Note: Data for recent cases are preliminary and are updated based on findings from case investigations. Residence unknown for 273 cases.

COVID-19 cases by age group and sex



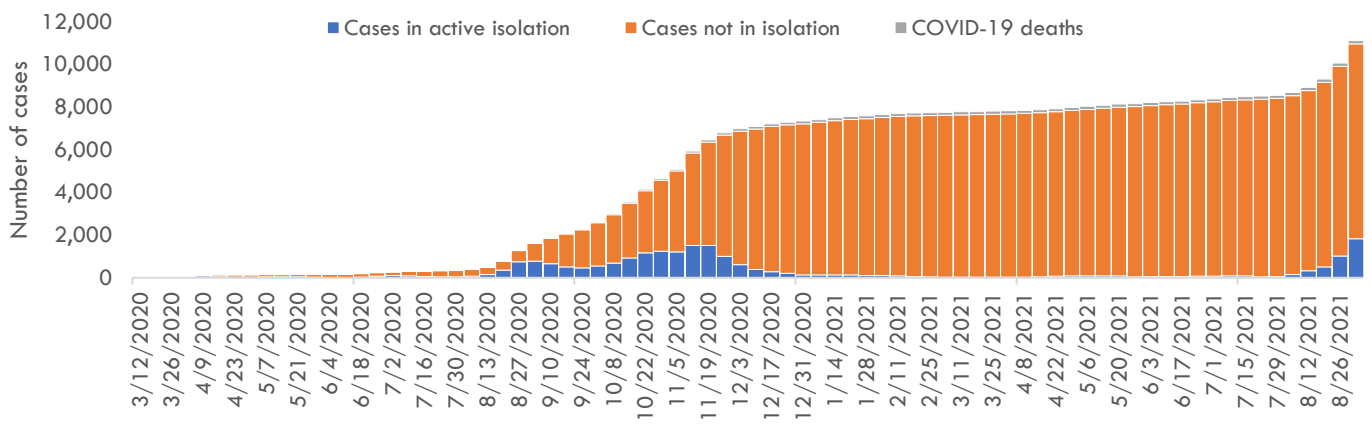
† Cases that test positive for COVID-19 through follow-up molecular testing return to active isolation.

‡ Cases not in isolation indicates the number of COVID-19 cases that are no longer in active isolation based on criteria outlined on page 4. Generally, the criteria assess time since COVID-19 symptom resolution and the date of their most recent positive diagnostic test to qualify for release from isolation.

¶ In the 14 days before symptom onset. Some cases traveled to more than one country.

** Some cases have more than one link to other COVID-19 cases.

Number of cases in active isolation, cases not in isolation, and COVID-19 deaths, Guam





Guam COVID-19 Situation Report - 228

March 12, 2020 – September 3, 2021

COVID-19 TESTING BREAKDOWN

MOLECULAR TESTS	TOTAL	TOTAL POSITIVES*	NEW TESTS	NEW POSITIVES
Guam Public Health Laboratory	99,329	6,050	4,945	580
Department of Defense	34,705	1,156	846	89
Diagnostic Laboratory Services	24,042	1,257	647	67
Guam Memorial Hospital Authority	16,500	584	170	26
Guam Regional Medical City	15,263	557	301	59
Private Clinics**	13,717	893	432	71
Guam National Guard Laboratory	17	0	0	0
ANTIGEN TESTS	TOTAL	TOTAL POSITIVES	NEW TESTS	NEW POSITIVES
Guam Public Health Laboratory	10,945	197	546	17
Private Clinics***	6,791	400	1,460	151
SEROLOGY TESTS	TOTAL	TOTAL POSITIVES	NEW TESTS	NEW POSITIVES
Diagnostic Laboratory Services	374	36	1	1
Department of Defense	26	2	0	0

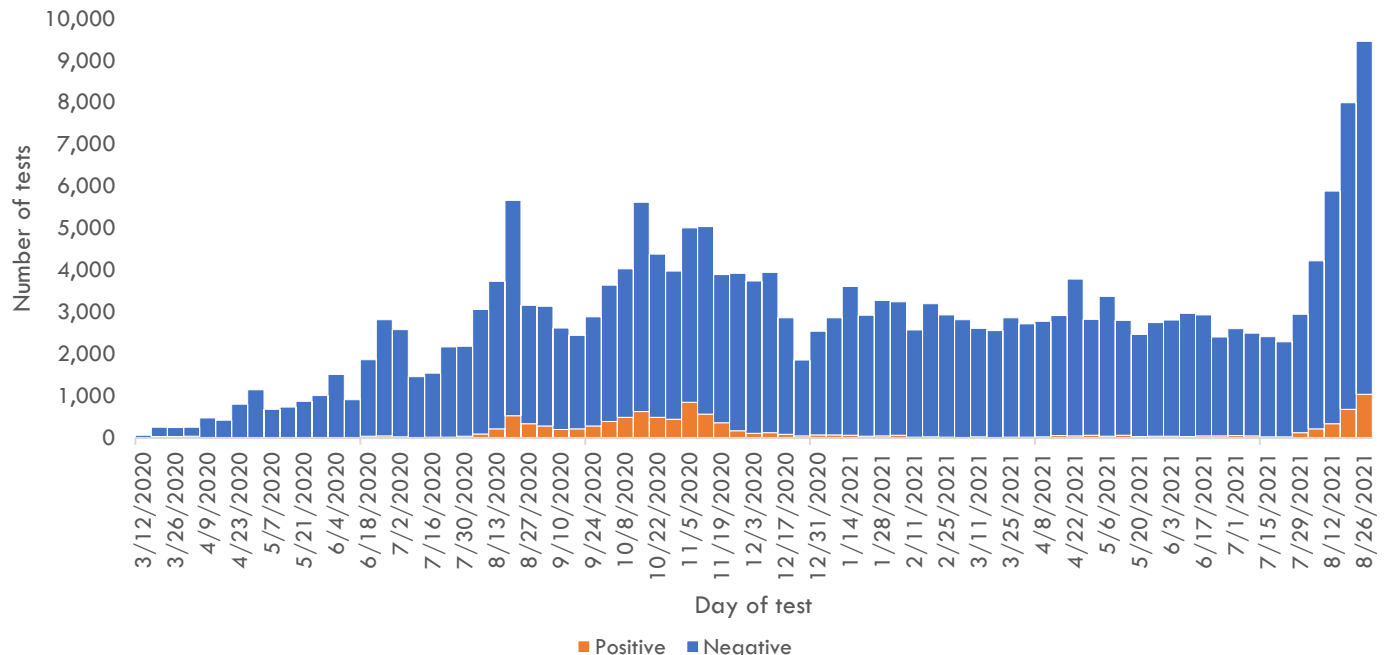
Total tests is defined as the number of specimens with conclusive results. New tests reported today is defined as the total tests reported to DPHSS since the last Situation Report. Percent positive is defined as number of positive specimens, out of all specimens tested. Total positives is defined as the number of positive specimens.

*Six additional confirmed cases tested positive through molecular testing at an out-of-state laboratory.

**Clinics included: American Medical Center, Guam Medical Care, Guam Radiology Consultants, Dr. Sheih's Clinic, US Marshalls Service, One Love Pediatrics, and Off-Island Clinics.

***Clinics included: American Medical Center, Central Medical Clinic, ExpressCare, IHP Medical Group, Evergreen Health Center, Cancer Center of Guam, Department of Corrections, Health Services of the Pacific, Tumon Medical Office, and Guam Medical Care.

COVID-19 testing by day of test, Guam



CONTACT INVESTIGATIONS	TOTAL	PAST 7 DAYS
Contacts identified by DPHSS	17,999	672
Contacts notified by DPHSS	8,641	85
Contacts tested by DPHSS	6,148	461
Cases identified through contact tracing	3,625	451

Note: Data for recent cases are preliminary and are updated based on findings from case investigations.

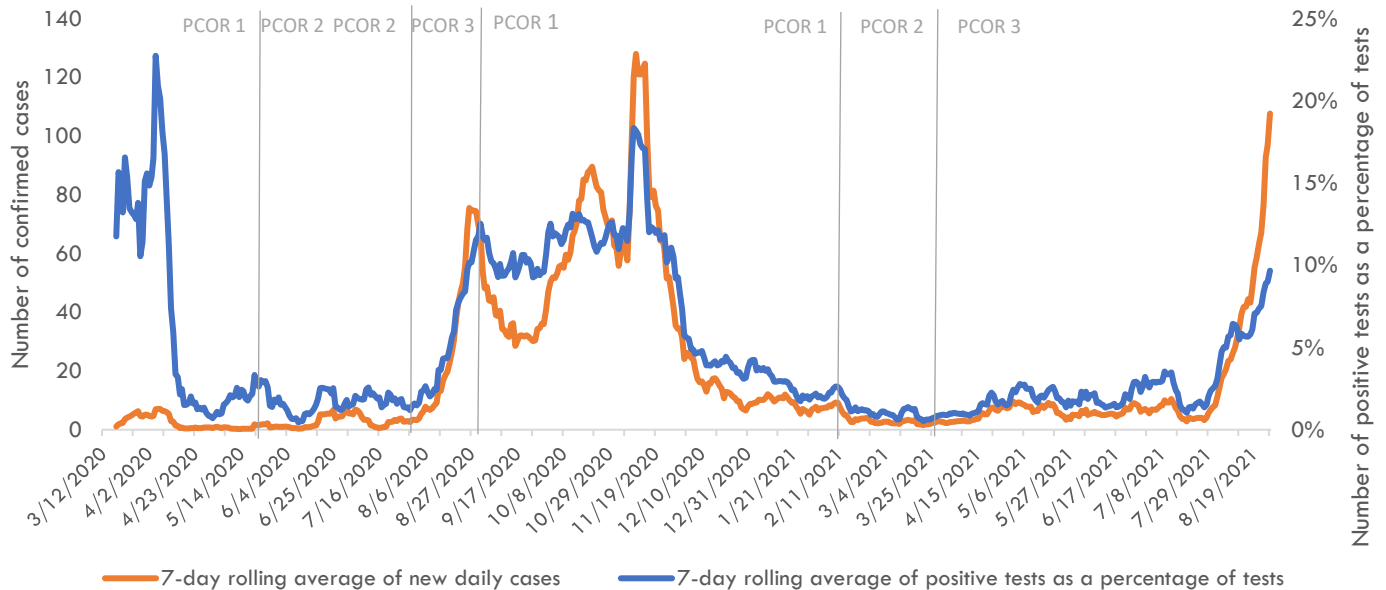


Guam COVID-19 Situation Report - 228

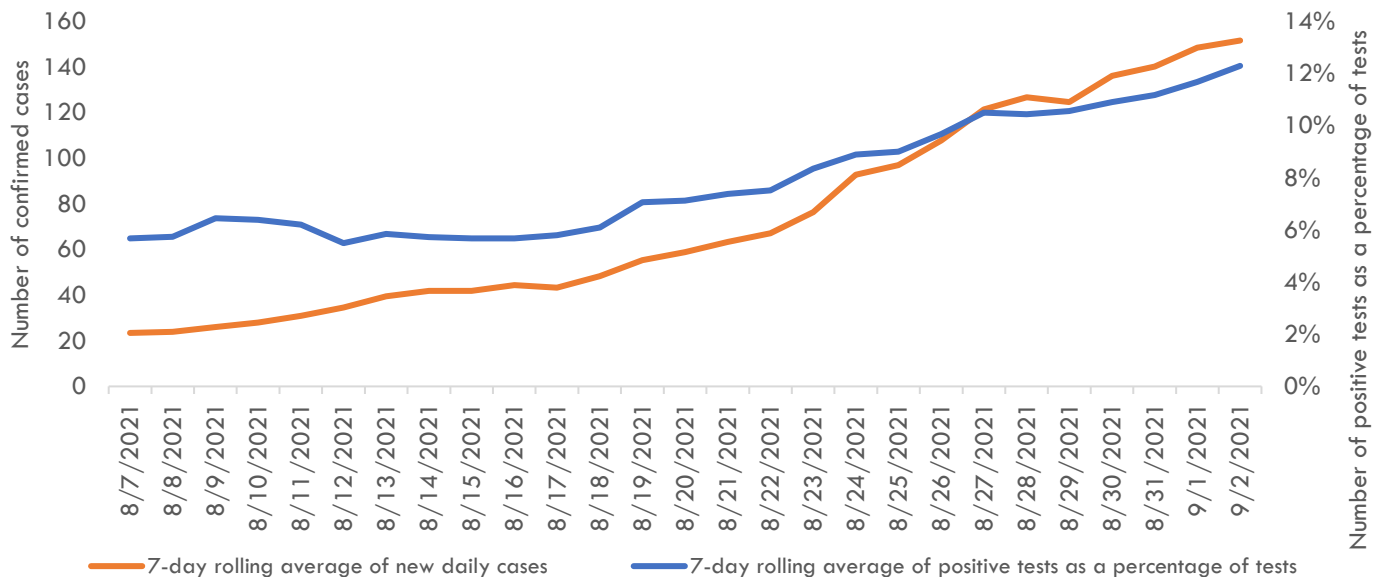
March 12, 2020 – September 3, 2021

Pandemic Condition of Readiness Assessment

Triggers for PCOR - Cases, March 12, 2020 – September 3, 2021



Triggers for PCOR - Cases, Previous 28 days



† Criteria for release from isolation

For persons with mild to moderate illness who are not severely immunocompromised:

For persons having symptoms: At least 3 days have passed since recovery defined as resolution of fever without the use of fever-reducing medications and improvement in respiratory symptoms (e.g., cough, shortness of breath) and any other symptoms attributed to COVID-19 AND at least 10 days have passed since symptoms first appeared—or since recurrent symptoms appeared—AND at least 10 days have passed since the date of their first (or most recent) positive COVID-19 diagnostic test.

For persons without symptoms: At least 10 days have passed since the date of their first (or most recent) positive COVID-19 diagnostic test assuming they have not subsequently developed symptoms since their positive test.

For persons with severe to critical illness or who are severely immunocompromised:

For persons having symptoms: At least 10 days have passed since symptoms first appeared, up to 20 days.

For persons without symptoms: At least 10 days have passed since the date of their first positive COVID-19 diagnostic test, up to 20 days.