

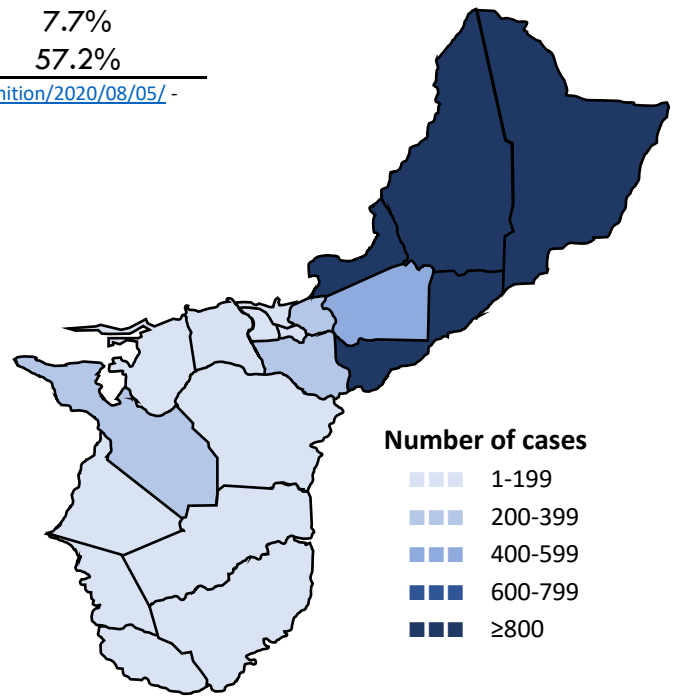


Guam COVID-19 Situation Report - 229

March 12, 2020 – September 10, 2021

COVID-19 Case Count*	Total	Past 7 days	% Increase
COVID-19 Cases	12,227	1,121	10.1%
Confirmed cases	11,378	812	7.7%
Probable cases	849	309	57.2%

COVID-19 Cases
Primary Reported Residence



*<https://www.cdc.gov/nndss/conditions/coronavirus-disease-2019-covid-19/case-definition/2020/08/05/> - CSTE/CDC COVID-19 case definition (August 5, 2020)

Summary

As of September 10, 2021, there have been 12,227 cases of COVID-19 reported on Guam. One-thousand one-hundred twenty-one (1,121) new cases of COVID-19 were reported to DPHSS from September 3 - September 9: 812 confirmed cases and 309 probable cases. Eight COVID-19 cases were reported deceased since the last situation report; totaling 159 deaths.

Confirmed cases - past 7 days: 812 cases tested positive by molecular testing - 443 at GPLH, 80 at AMC, 78 at DoD, 77 at DLS, 75 at GRMC, 50 at GMHA, four at GRC, two at GFD, two at GPD, and one at GMC.

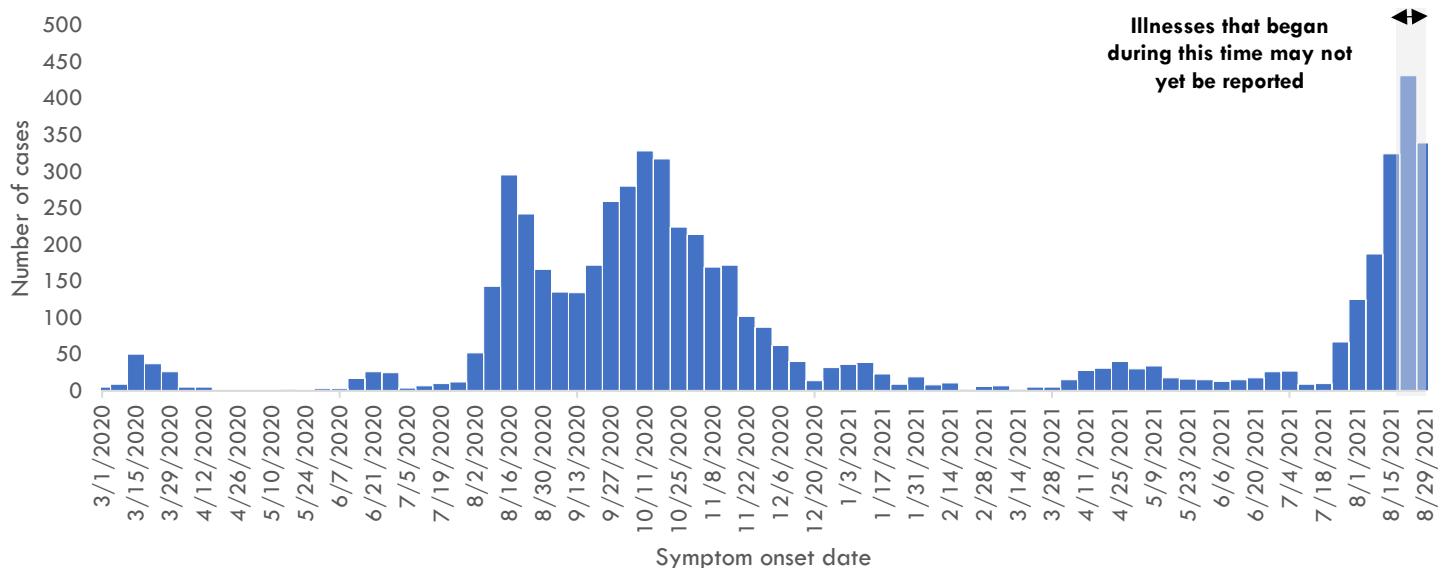
Probable cases - past 7 days: 309 cases tested positive by antigen testing - 122 at GPLH, 121 at GRC, 17 at ECC, 16 at FDMS, 11 at IHP, eight at GFD, eight at DOC, two at TMO, one at JOG, one at ISC, one at SACS, and one at EHC.

497 new cases were identified through contact tracing. 2 cases reported recent travel — one from the US and one from Philippines — where one was identified in quarantine. 319 cases were reported released from isolation.

COVID-19 Testing on Guam**	Total	Tests reported past 7 days	% pos. past 7 days***
COVID-19 Tests	230,391	8,647	14.5%
Molecular Tests	209,355	5,767	16.1%
Antigen Tests	20,633	2,877	11.2%
Serology Tests	403	3	33.3%

See COVID-19 Testing Breakdown for all testing definitions. New tests reported reflects the number of tests reported to DPHSS since the previous report and does not necessarily indicate the number of specimens run in the same time frame. *7-day rolling average of positive tests as a percentage of tests

COVID-19 cases by symptom onset date, Guam





Guam COVID-19 Situation Report - 229

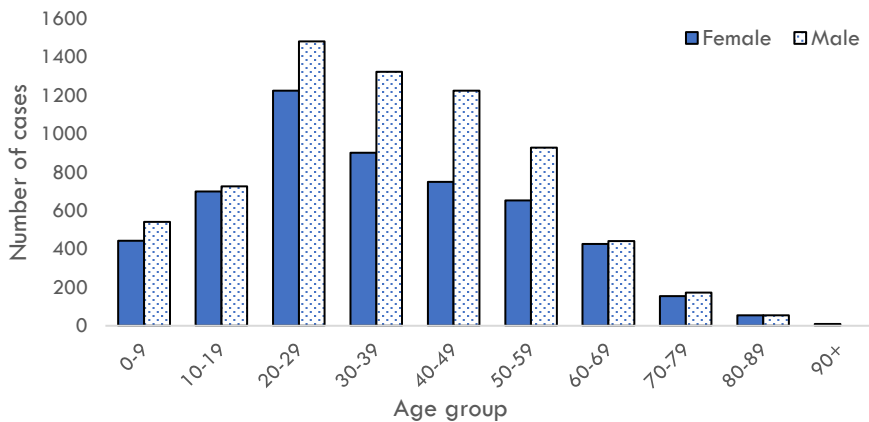
March 12, 2020 – September 10, 2021

Case Breakdown

Status	Sex	Current isolation location
COVID-19 deaths	Female	Hospital
Cases in active isolation†	Male	Home
Cases not in isolation‡	Age Group	Isolation facility
Civilian	0-9	Military
Military service member	10-19	Epi-Link to COVID-19 case**
Travel History¶	20-29	Household contact
US	30-39	Workplace contact
Dubai	40-49	Community contact
Japan	50-59	Healthcare contact
Mexico	60-69	Residence
Philippines	70-79	North
Other	80-89	Central
Identified in quarantine	90+	South
		Homeless
		Non-resident

Note: Data for recent cases are preliminary and are updated based on findings from case investigations. Residence unknown for 273 cases.

COVID-19 cases by age group and sex



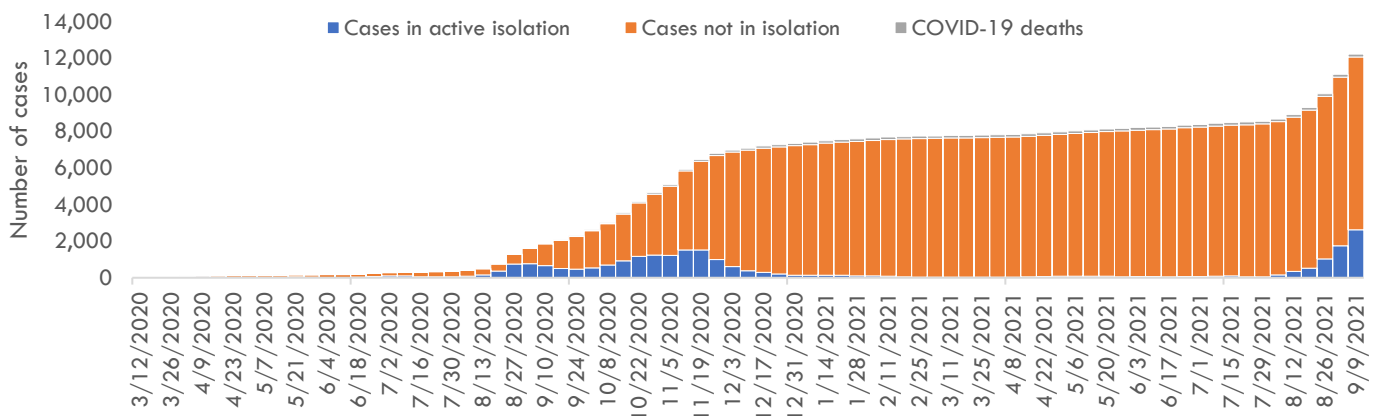
† Cases that test positive for COVID-19 through follow-up molecular testing return to active isolation.

‡ Cases not in isolation indicates the number of COVID-19 cases that are no longer in active isolation based on criteria outlined on page 4. Generally, the criteria assess time since COVID-19 symptom resolution and the date of their most recent positive diagnostic test to qualify for release from isolation.

¶ In the 14 days before symptom onset. Some cases traveled to more than one country.

** Some cases have more than one link to other COVID-19 cases.

Number of cases in active isolation, cases not in isolation, and COVID-19 deaths, Guam





Guam COVID-19 Situation Report - 229

March 12, 2020 – September 10, 2021

COVID-19 TESTING BREAKDOWN

MOLECULAR TESTS	TOTAL	TOTAL POSITIVES*	NEW TESTS	NEW POSITIVES
Guam Public Health Laboratory	102,443	6,493	3,114	443
Department of Defense	35,655	1,234	950	78
Diagnostic Laboratory Services	24,620	1,334	578	77
Guam Memorial Hospital Authority	16,710	634	210	50
Guam Regional Medical City	15,785	632	522	75
Private Clinics**	14,125	983	393	89
Guam National Guard Laboratory	17	0	0	0

ANTIGEN TESTS	TOTAL	TOTAL POSITIVES	NEW TESTS	NEW POSITIVES
Guam Public Health Laboratory	11,892	319	947	122
Private Clinics***	8,741	588	1,930	187

SEROLOGY TESTS	TOTAL	TOTAL POSITIVES	NEW TESTS	NEW POSITIVES
Diagnostic Laboratory Services	377	37	3	1
Department of Defense	26	2	0	0

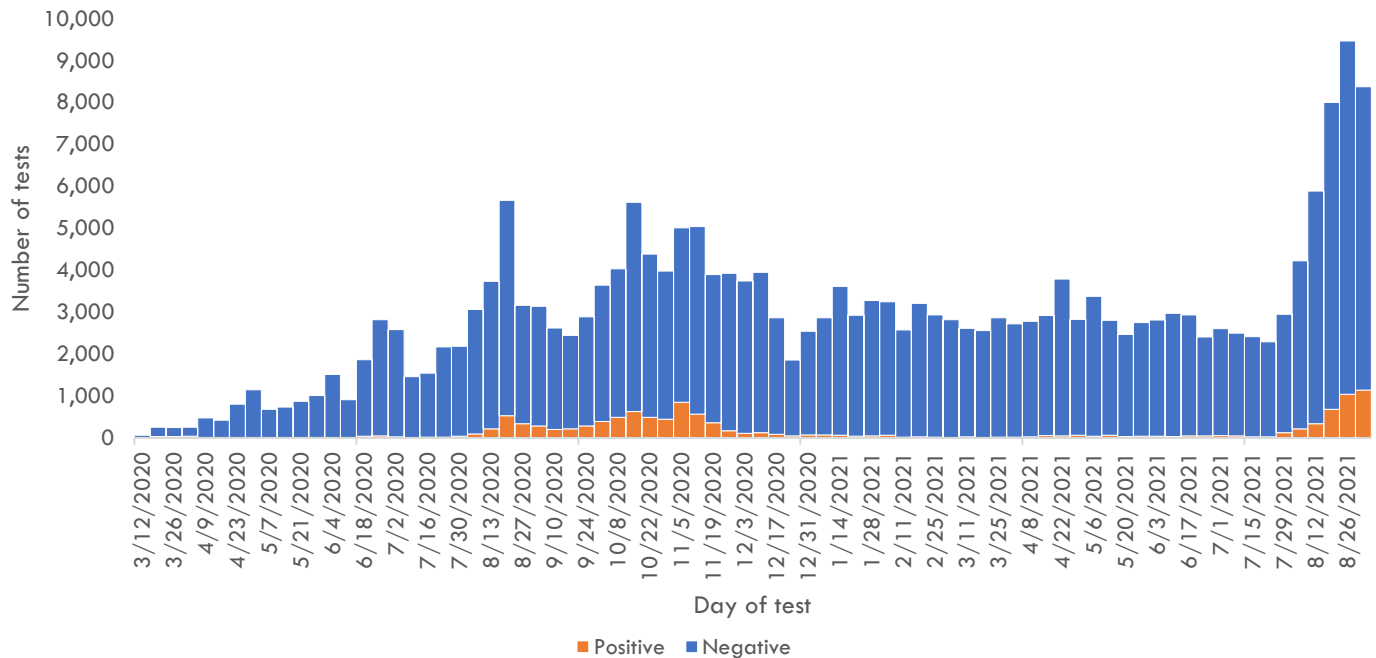
Total tests is defined as the number of specimens with conclusive results. New tests reported today is defined as the total tests reported to DPHSS since the last Situation Report. Percent positive is defined as number of positive specimens, out of all specimens tested. Total positives is defined as the number of positive specimens.

*Six additional confirmed cases tested positive through molecular testing at an out-of-state laboratory.

**Clinics included: American Medical Center, Guam Medical Care, Guam Radiology Consultants, Dr. Sheih's Clinic, US Marshalls Service, One Love Pediatrics, and Off-Island Clinics.

***Clinics included: American Medical Center, Central Medical Clinic, ExpressCare, IHP Medical Group, Evergreen Health Center, Cancer Center of Guam, Department of Corrections, Health Services of the Pacific, Tumon Medical Office, and Guam Medical Care.

COVID-19 testing by day of test, Guam



CONTACT INVESTIGATIONS	TOTAL	PAST 7 DAYS
Contacts identified by DPHSS	18,413	414
Contacts notified by DPHSS	8,663	22
Contacts tested by DPHSS	6,451	354
Cases identified through contact tracing	3,860	497

Note: Data for recent cases are preliminary and are updated based on findings from case investigations.

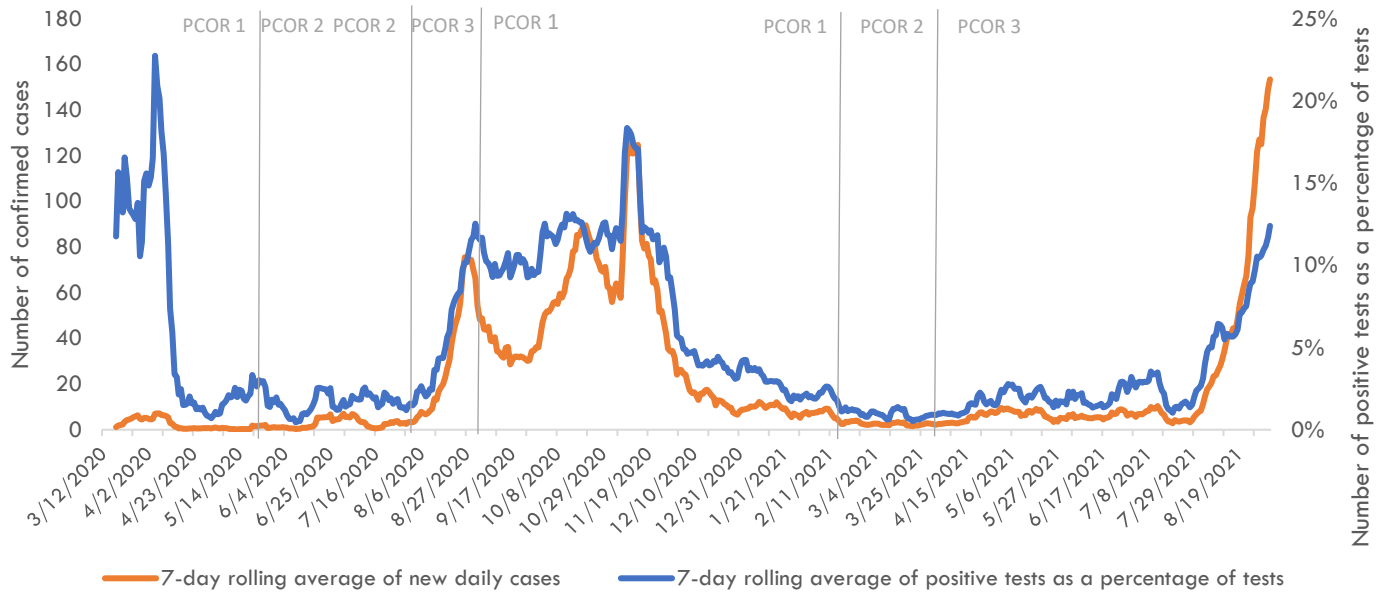


Guam COVID-19 Situation Report - 229

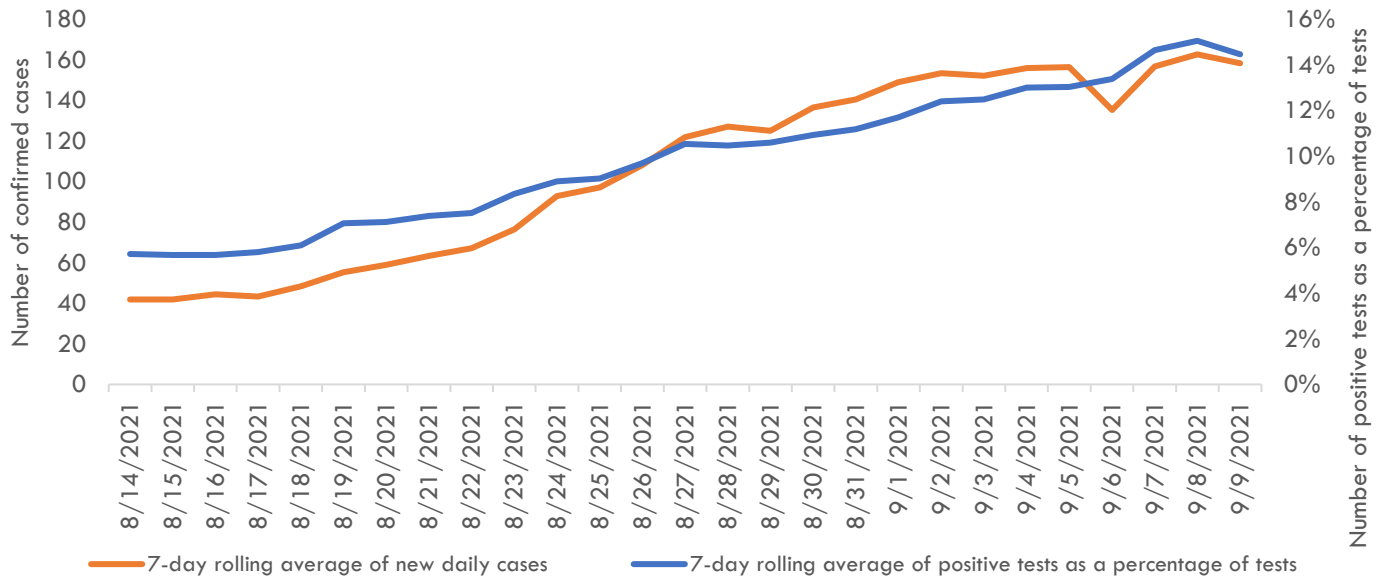
March 12, 2020 – September 10, 2021

Pandemic Condition of Readiness Assessment

Triggers for PCOR - Cases, March 12, 2020 – September 9, 2021



Triggers for PCOR - Cases, Previous 28 days



† Criteria for release from isolation

For persons with mild to moderate illness who are not severely immunocompromised:

For persons having symptoms: At least 3 days have passed since recovery defined as resolution of fever without the use of fever-reducing medications and improvement in respiratory symptoms (e.g., cough, shortness of breath) and any other symptoms attributed to COVID-19 AND at least 10 days have passed since symptoms first appeared—or since recurrent symptoms appeared—AND at least 10 days have passed since the date of their first (or most recent) positive COVID-19 diagnostic test.

For persons without symptoms: At least 10 days have passed since the date of their first (or most recent) positive COVID-19 diagnostic test assuming they have not subsequently developed symptoms since their positive test.

For persons with severe to critical illness or who are severely immunocompromised:

For persons having symptoms: At least 10 days have passed since symptoms first appeared, up to 20 days.

For persons without symptoms: At least 10 days have passed since the date of their first positive COVID-19 diagnostic test, up to 20 days.