

TEAM KENTUCKY



COVID-19 Hotline (800) 722-5725

The COVID-19 hotline is a service operated by the healthcare professionals at the KY Poison Control Center who can provide advice and answer questions.

For General Inquiries

Please send an email to KYcovid19@ky.gov

Healthcare Provider Guidance

Kentucky's Healthcare Guidance for Healthcare Providers, Labs and Facilities

[LEARN MORE](#)

If you are a lab providing COVID-19 services, please [complete this form](#).

[Labs providing COVID-19 services in KY](#)

Complete the following form to have your COVID-19 testing site/information provided to the public. [Submit a Location](#)
If you are a facility and need your information on the map updated, please [submit a map update](#).

Kentucky Coronavirus Monitoring

Current as of September 26, 2020

Total Positive

66,036

Probable: 7,908- Confirmed: 58,128

Deaths

1,154

Probable: 9 - Confirmed: 1,144

Total Tested

1,354,927

PCR: 1,274,688- Serology: 55,724- Antigen: 24,514

Positivity Rate*

4.42

Recovered

11,750

Daily Reports

[KY COVID-19 Daily Report](#)

[Long Term Care and other Congregate Facilities Update](#)

[K-12 School Public Health Report](#)

[College and University Public Health Report](#)

*Based on a 7-day rolling average. Timing of reporting overall lab results versus positives, repeat testing of individuals, duplicate entries and lack of reporting by some labs, make the data imprecise and more appropriate or useful for trending.

[Learn more about how KDPH determines the positivity rate.](#)

Note: Data includes cases of COVID-19 reported to KDPH.

[KY COVID-19 Case Classification](#)

[COVID-19 Daily Reports](#)



COVID-19 Current Incidence Rate in Kentucky

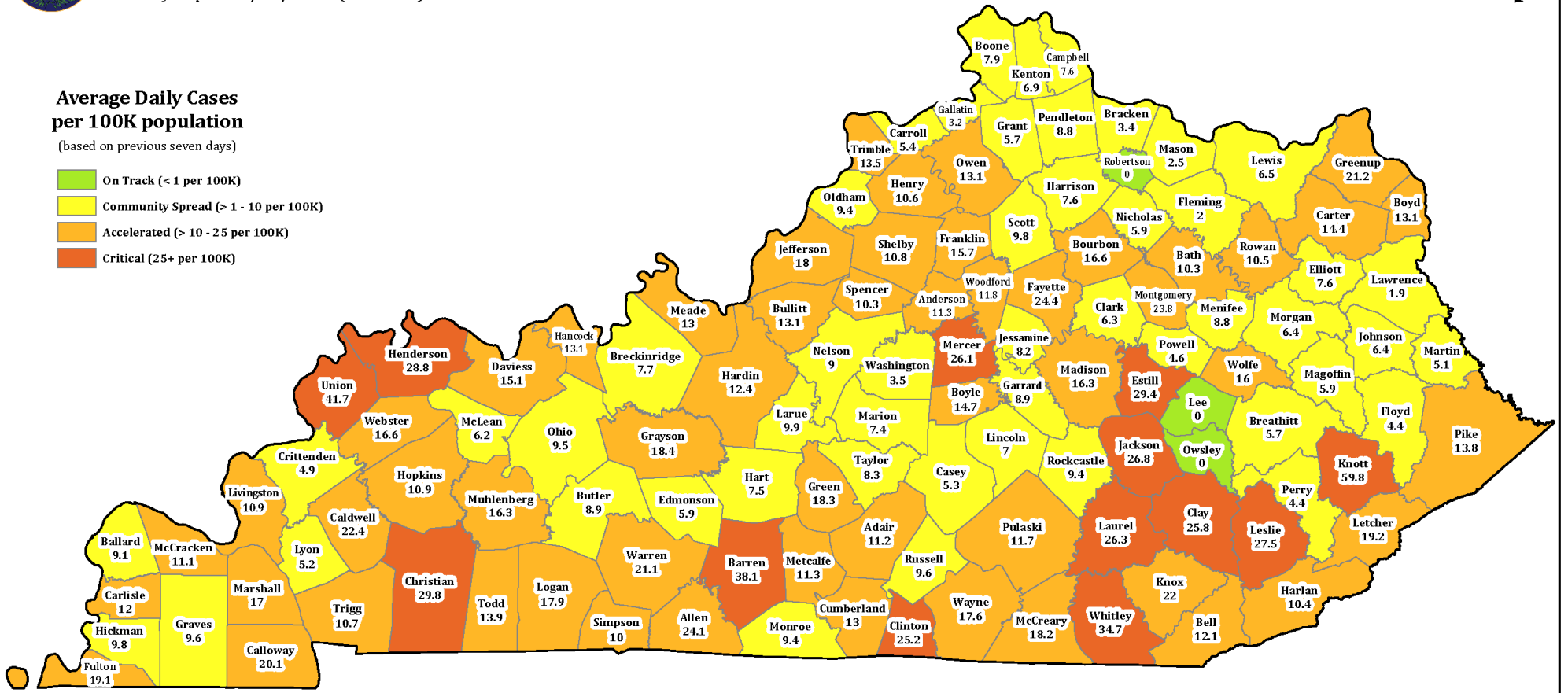
Date of Report: 9/26/2020 (4:38 PM)



Average Daily Cases per 100K population

(based on previous seven days)

- On Track (< 1 per 100K)
- Community Spread (> 1 - 10 per 100K)
- Accelerated (> 10 - 25 per 100K)
- Critical (25+ per 100K)



Population values from the 2019 US Census Bureau Estimates

Total number of cases used in the calculations: 66,036 Cases

Data Source: Kentucky Department for Public Health

Interactive Maps

View Confirmed Cases, Cases by County, Cases by Sex, Cases by Age Group, Confirmed Deaths, Deaths by Sex and Deaths by Age Group.

[Desktop Dashboard](#)

[Mobile Dashboard](#)

In the event of a discrepancy between case confirmations, please note kycovid19.ky.gov is reporting confirmed cases by the Kentucky Department of Public Health (KDPH). We are working diligently to confirm cases as they are reported to KDPH.

[COVID-19 Daily Case Incidence Rate Maps](#)

White House Coronavirus Task Force Reports for Kentucky

[September 20, 2020](#) [September 14, 2020](#) [September 6, 2020](#) [August 30, 2020](#) [August 23, 2020](#) [August 16, 2020](#)
[August 9, 2020](#) [August 2, 2020](#) [July 26, 2020](#)

Travel Advisory

[Learn More](#)

On July 20, 2020 the Kentucky Department for Public Health issued a travel advisory with the recommendation of a **14-day self-quarantine** for travelers who went to any of the states reporting positive testing rate equal to or greater than 15 percent-of COVID-19 testing.

It is recommended to use extra precaution traveling to states reporting positive testing rate equal to or greater than 10 percent-of COVID-19 testing.

South Dakota	23.78%
Idaho	19.43%
Wisconsin	17.55%
Iowa	16.27%
Kansas	15.53%

Data provided by [Johns Hopkins](#).

Healthy at School

Resources

- [Guidance on Safety Expectations and Best Practices for Kentucky K-12 Schools - KDE/DPH Flagship Document](#)
- [K-12 Schools COVID-19 Reporting Regulation](#)
- [K-12 Schools COVID-19 Reporting Instructions](#)
- [K-12 Schools COVID-19 Mode of Instruction Metrics](#)
- [Kentucky College and University COVID-19 Dashboards](#)
- [COVID-19 Daily Case Incidence Rate Maps](#)
- [COVID Daily Reports](#)
- **COMING SOON** K-12 COVID-19 Dashboard

Healthy at Work

Our phased approach to reopen Kentucky's economy

[LEARN MORE](#)

COVID-19 Related Actions taken by Gov. Andy Beshear

Daily actions and executive orders taken by the Governor

[Learn More](#)

Team Kentucky Fund

Governor Andy Beshear invites all Kentuckians to make a tax deductible donation to the Team Kentucky Fund. This fund provides assistance to Kentuckians who have been severely financially impacted by the COVID-19 emergency.

[DONATE](#)

TeleHealth

Promoting, advocating and supporting telehealth adoption across the Commonwealth

[Learn More](#)

KYSAFER

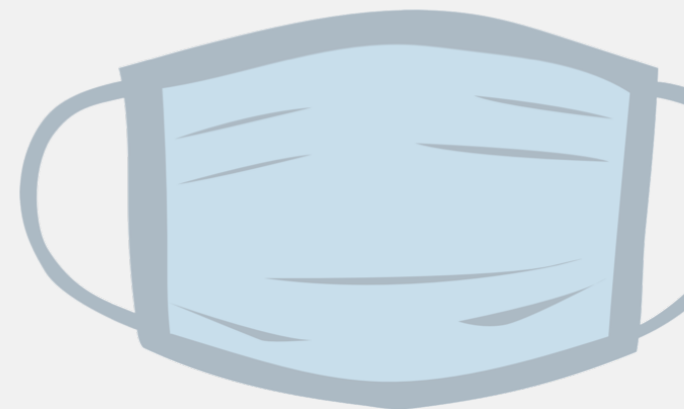
Report observations of non-compliance with rules that keep our fellow Kentuckians safe. 1-833-KYSAFER

The Team Kentucky Fund is overseen by the Public Protection Cabinet. The program will be administered through a partnership with the Community Action Kentucky, Inc.

[Apply Here](#)

Face Coverings FAQs

View a list of frequently asked questions about Governor Beshear's Executive Order related to face coverings.



[Learn More](#)

Price Gouging

Information regarding possible price gouging, contact the Office of the Attorney General Consumer Protection Branch.

[Report Online](#)

[888-432-9257](tel:888-432-9257)

Eviction Relief Fund

Healthy at Home Eviction Relief Fund has been created to prevent evictions of Kentucky tenants to keep them housed during the COVID-19 pandemic and allow landlords to get substantial payments for back rent.

[Get Started](#)

The Kentucky Department for Public Health (KDPH) is responding actively to the COVID-19 situation. Our State Health Operations Center is operating at Level 1, its highest activation level. This respiratory disease was first detected in a Kentucky resident on March 6, 2020.

Contact Tracing

A Confidential Public Health Resource

[Presumptive Eligibility One Pager](#)

[Education Talking Points](#)

[Contact Tracing: Myth vs. Fact](#)

[Contact Tracing: Your Action Matters](#) [Spanish](#) - [Burmese](#) - [Somali](#) - [Chinese](#)

[Contact Tracing: How It Works](#) [Spanish](#) - [Burmese](#) - [Somali](#) - [Chinese](#)

[Contact Tracing One Pager](#) [Spanish](#) - [Burmese](#) - [Somali](#) - [Chinese](#)

[What is Contact Tracing](#) [Spanish](#) - [Burmese](#) - [Somali](#) - [Chinese](#)

[Contact Tracing Postcard](#) [Spanish](#) - [Burmese](#) - [Somali](#) - [Chinese](#)

[Contact Tracing Infographic](#) [Spanish](#) - [Burmese](#) - [Somali](#) - [Chinese](#)

[Frequently Asked Questions](#) [Spanish](#) - [Burmese](#) - [Somali](#) - [Chinese](#)

[Contact Tracing Public Service Announcement Toolkit](#) [Spanish](#) - [Burmese](#) - [Somali](#) - [Chinese](#)

When printing the above materials, please print the “Presumptive Eligibility One Pager” as well.

Contact Tracing Jobs

Team Kentucky is hiring for COVID-19 Contact Tracing related jobs. Team Kentucky has partnered with vendors across the state.

[Learn More](#)

Resources

Kentucky's Response to COVID-19



KDPH Guidance for Businesses



COVID-19 Graphics



Guidance by Topic



Newest KDPH Guidance



[COVID-19 Childcare Center FAQ's](#) **New**

[Guidance for Release from Isolation/Return to Work](#) **Updated**

[CDC Face Cover Tutorial](#)

[CDC Face Covering/ Mask Guidance](#)

Mental Health and Relieving Anxiety



Services



Healthcare Providers



All healthcare guidance can now be found [here](#).

COVID-19 Resources for Children



Other Resources

[Wear masks properly sign](#)

[Wear masks properly sign - Spanish](#)

[Masks are required sign](#)

[Masks are required sign - Spanish](#)

[COVID-19 Survivor Support Information](#)

[Healthy at Work sign](#)

[Healthy at Work sign - Spanish](#)

[Healthy at Work sign - French](#)

[Do not enter if sick sign](#)

[Do not enter if sick sign - Spanish](#)

[Grocery Store Signage for Customers](#)

[Grocery Store Social Distancing Signage](#)

[Grocery Store Signage for Staff](#)

[FDA: Food Safety and the Coronavirus Disease 2019](#)

Kentucky State Agencies Respond to COVID-19

[Kentucky Department of Education](#)

[Finance and Administration Cabinet](#)

[Kentucky Labor Cabinet](#)

[Governor's Office of Agricultural Policy](#)

[Kentucky Commission on the Deaf and Hard of Hearing \(KCDHH\)](#)

[KCDHH COVID-19 Updates](#)

[KDPH Food Safety Branch](#)

For COVID-19 information in multiple languages, visit [Resources in 150+ Languages \(Source: Endangered Language Project\)](#)

Updated on September 26th, 2020 04:42PM

[Cabinet for Health and Family Services](#)

[Policies](#) [Security](#) [Disclaimer](#) [Accessibility](#)