

TEAM KENTUCKY



COVID-19 Hotline (800) 722-5725

The COVID-19 hotline is a service operated by the healthcare professionals at the KY Poison Control Center who can provide advice and answer questions.

For General Inquiries

Please send an email to KYcovid19@ky.gov

Healthcare Provider Guidance

Kentucky's Healthcare Guidance for Healthcare Providers, Labs and Facilities

[LEARN MORE](#)

If you are a lab providing COVID-19 services, please [complete this form](#).

[Labs providing COVID-19 services in KY](#)

Complete the following form to have your COVID-19 testing site/information provided to the public. [Submit a Location](#)
If you are a facility and need your information on the map updated, please [submit a map update](#).

Kentucky Coronavirus Monitoring

Current as of October 14, 2020

Total Positive

83,013

Probable: 11,954- Confirmed: 71,059

Deaths

1,276

Probable: 14- Confirmed: 1,262

Total Tested

1,718,612

PCR: 1,601,887- Serology: 79,394- Antigen:37,340

Positivity Rate*

4.72

Recovered

16,756

Daily Reports

[KY COVID-19 Daily Report](#)

[Long Term Care and other Congregate Facilities Update](#)

[K-12 School Public Health Report](#)

[College and University Public Health Report](#)

[K-12 COVID-19 Dashboard](#)

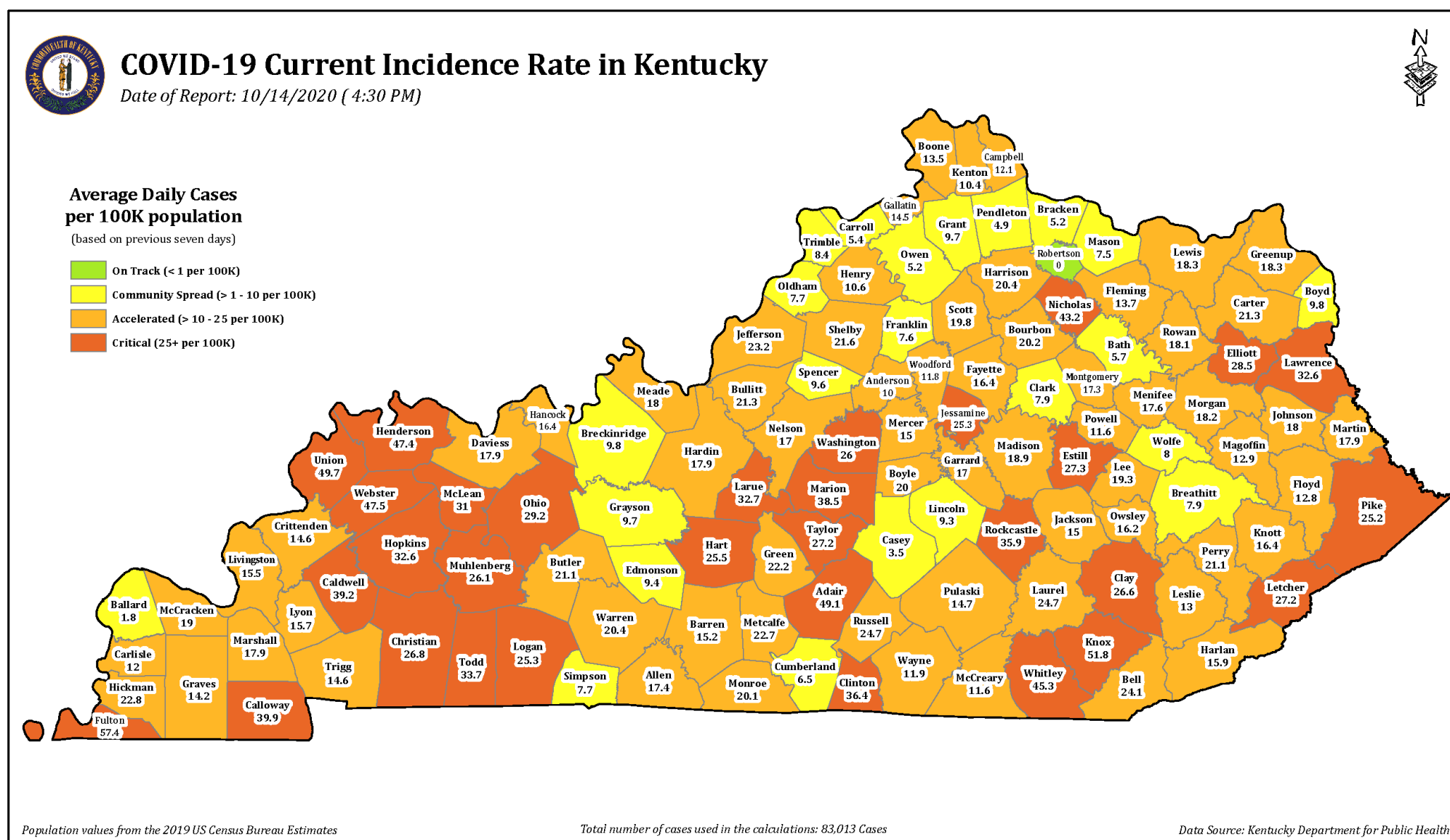
*Based on a 7-day rolling average. Timing of reporting overall lab results versus positives, repeat testing of individuals, duplicate entries and lack of reporting by some labs, make the data imprecise and more appropriate or useful for trending.

[Learn more about how KDPH determines the positivity rate.](#)

Note: Data includes cases of COVID-19 reported to KDPH.

[KY COVID-19 Case Classification](#)

[COVID-19 Daily Reports](#)



The 7-Day incidence is calculated by taking the total number of unique cases in each county over the past 7 days, divided by 7 to get a daily average, divided by the U.S. census bureau county population, and multiplied by 100,000 to get the incidence per 100,000 people. The cases counted each day are based on the date an investigation was opened in NEDSS (i.e., National Electronic Disease Surveillance System). Duplicate cases are removed before the calculation, so each positive case is only included once. NOTE: State and local health department data will vary for a variety of reasons including data entry timing, communication processes, and 7-day averaging.

Interactive Maps

View Confirmed Cases, Cases by County, Cases by Sex, Cases by Age Group, Confirmed Deaths, Deaths by Sex and Deaths by Age Group.

Desktop Dashboard

Mobile Dashboard

In the event of a discrepancy between case confirmations, please note kycovid19.ky.gov is reporting confirmed cases by the Kentucky Department of Public Health (KDPH). We are working diligently to confirm cases as they are reported to KDPH.

[COVID-19 Daily Case Incidence Rate Maps](#)

White House Coronavirus Task Force Reports for Kentucky

[October 11, 2020](#) [October 4, 2020](#) [September 27, 2020](#) [September 20, 2020](#) [September 14, 2020](#) [September 6, 2020](#)
[August 30, 2020](#) [August 23, 2020](#) [August 16, 2020](#) [August 9, 2020](#) [August 2, 2020](#) [July 26, 2020](#)

Travel Advisory

[Learn More](#)

On July 20, 2020 the Kentucky Department for Public Health issued a travel advisory with the recommendation of a **14-day self-quarantine** for travelers who went to any of the states reporting positive testing rate equal to or greater than 15 percent-of COVID-19 testing.

It is recommended to use extra precaution traveling to states reporting positive testing rate equal to or greater than 10 percent-of COVID-19 testing.

South Dakota	23.58%
Idaho	23.49%
Wisconsin	21.11%
Iowa	18.82%
Wyoming	16.67%
Kansas	16.64%
Nevada	15.71%
Indiana	15.56%
Florida	11.65%*

*Due to the removal of public health restrictions, there is a higher risk of contracting COVID-19 in Florida, therefore a 14- day self-quarantine is recommended after travel to Florida.

Data provided by [Johns Hopkins](#).

Celebrate Halloween Safely

The following guidance is designed to help curb the spread of COVID-19.

It will be reassessed and updated as the situation evolves and we learn more in the weeks leading up to Halloween.

[KDPH Halloween Guidance](#)

[Halloween One Pager](#)

[KDPH Halloween Guidance - Spanish](#)

[Halloween One Pager - Spanish](#)

Resources

- [Guidance on Safety Expectations and Best Practices for Kentucky K-12 Schools - KDE/DPH Flagship Document](#)
- [K-12 Schools COVID-19 Reporting Regulation](#)
- [K-12 Schools COVID-19 Reporting Instructions](#)
- [K-12 Schools COVID-19 Mode of Instruction Metrics](#)
- [Kentucky College and University COVID-19 Dashboards](#)
- [COVID-19 Daily Case Incidence Rate Maps](#)
- [COVID Daily Reports](#)
- [K-12 COVID-19 Dashboard](#)

Healthy at Work

Our phased approach to reopen Kentucky's economy

[LEARN MORE](#)

COVID-19 Related Actions taken by Gov. Andy Beshear

Daily actions and executive orders taken by the Governor

[Learn More](#)

Team Kentucky Fund

Governor Andy Beshear invites all Kentuckians to make a tax deductible donation to the Team Kentucky Fund. This fund provides assistance to Kentuckians who have been severely financially impacted by the COVID-19 emergency.

[DONATE](#)

TeleHealth

Promoting, advocating and supporting telehealth adoption across the Commonwealth

[Learn More](#)

KYSAFER

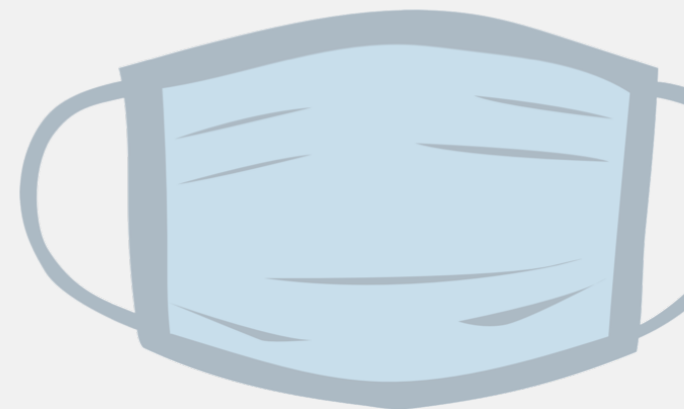
Report observations of non-compliance with rules that keep our fellow Kentuckians safe. 1-833-KYSAFER

The Team Kentucky Fund is overseen by the Public Protection Cabinet. The program will be administered through a partnership with the Community Action Kentucky, Inc.

[Apply Here](#)

Face Coverings FAQs

View a list of frequently asked questions about Governor Beshear's Executive Order related to face coverings.



[Learn More](#)

Price Gouging

Information regarding possible price gouging, contact the Office of the Attorney General Consumer Protection Branch.

[Report Online](#)

[888-432-9257](tel:888-432-9257)

Eviction Relief Fund

Healthy at Home Eviction Relief Fund has been created to prevent evictions of Kentucky tenants to keep them housed during the COVID-19 pandemic and allow landlords to get substantial payments for back rent.

[Get Started](#)

The Kentucky Department for Public Health (KDPH) is responding actively to the COVID-19 situation. Our State Health Operations Center is operating at Level 1, its highest activation level. This respiratory disease was first detected in a Kentucky resident on March 6, 2020.

Contact Tracing

A Confidential Public Health Resource

[Presumptive Eligibility One Pager](#)

[Education Talking Points](#)

[Contact Tracing: Myth vs. Fact](#)

[Contact Tracing: Your Action Matters](#) [Spanish](#) - [Burmese](#) - [Somali](#) - [Chinese](#)

[Contact Tracing: How It Works](#) [Spanish](#) - [Burmese](#) - [Somali](#) - [Chinese](#)

[Contact Tracing One Pager](#) [Spanish](#) - [Burmese](#) - [Somali](#) - [Chinese](#)

[What is Contact Tracing](#) [Spanish](#) - [Burmese](#) - [Somali](#) - [Chinese](#)

[Contact Tracing Postcard](#) [Spanish](#) - [Burmese](#) - [Somali](#) - [Chinese](#)

[Contact Tracing Infographic](#) [Spanish](#) - [Burmese](#) - [Somali](#) - [Chinese](#)

[Frequently Asked Questions](#) [Spanish](#) - [Burmese](#) - [Somali](#) - [Chinese](#)

[Contact Tracing Public Service Announcement Toolkit](#) [Spanish](#) - [Burmese](#) - [Somali](#) - [Chinese](#)

When printing the above materials, please print the “Presumptive Eligibility One Pager” as well.

Contact Tracing Jobs

Team Kentucky is hiring for COVID-19 Contact Tracing related jobs. Team Kentucky has partnered with vendors across the state.

[Learn More](#)

Resources

Kentucky's Response to COVID-19



KDPH Guidance for Businesses



COVID-19 Graphics



Guidance by Topic



Newest KDPH Guidance



[COVID-19 Childcare Center FAQ's](#) **New**

[Guidance for Release from Isolation/Return to Work](#) **Updated**

[CDC Face Cover Tutorial](#)

[CDC Face Covering/ Mask Guidance](#)

Mental Health and Relieving Anxiety



Services



Healthcare Providers



All healthcare guidance can now be found [here](#).

COVID-19 Resources for Children



Other Resources

[Wear masks properly sign](#)

[Wear masks properly sign - Spanish](#)

[Masks are required sign](#)

[Masks are required sign - Spanish](#)

[COVID-19 Survivor Support Information](#)

[Healthy at Work sign](#)

[Healthy at Work sign - Spanish](#)

[Healthy at Work sign - French](#)

[Do not enter if sick sign](#)

[Do not enter if sick sign - Spanish](#)

[Grocery Store Signage for Customers](#)

[Grocery Store Social Distancing Signage](#)

[Grocery Store Signage for Staff](#)

[FDA: Food Safety and the Coronavirus Disease 2019](#)

Kentucky State Agencies Respond to COVID-19

[Kentucky Department of Education](#)

[Finance and Administration Cabinet](#)

[Kentucky Labor Cabinet](#)

[Governor's Office of Agricultural Policy](#)

[Kentucky Commission on the Deaf and Hard of Hearing \(KCDHH\)](#)

[KCDHH COVID-19 Updates](#)

[KDPH Food Safety Branch](#)

For COVID-19 information in multiple languages, visit [Resources in 150+ Languages \(Source: Endangered Language Project\)](#)

Updated on October 14th, 2020 04:25PM

[Cabinet for Health and Family Services](#)

[Policies](#) [Security](#) [Disclaimer](#) [Accessibility](#)