



MENU

[View Vaccine Phases - English](#) [Spanish](#)

COVID-19 Vaccine

The COVID-19 Hotline (800) 722-5725 can answer general COVID-19 vaccine questions.

The Kentucky Department for Public Health (KDPH) supports Governor Andy Beshear's prioritization of health care as a basic human right and believes every Kentucky family deserves to see a doctor and receive treatment.

Recognizing that COVID-19-related deaths currently rank third among causes of death in Kentucky, KDPH is planning for the equitable distribution of a safe and effective COVID-19 vaccine that will advance Governor Beshear's healthcare priority. Vaccine distribution details, including the number of doses and allocation plan, are expected to change frequently. **Please visit this page for regular updates.**

When Can I Get Vaccinated?

Find out which phase of the vaccination campaign you fall in.
If you need assistance completing this tool, please call [855-598-2246](tel:855-598-2246)



Get
Started

Where Can I Get Vaccinated?

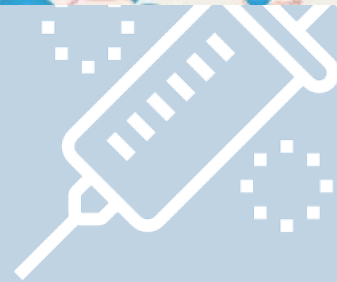
Find a location near you that is administering the vaccine.

LEARN
MORE

Vaccine Provider Guidance

Kentucky's guidance and resources for vaccine providers.

[Learn More](#)



Kentucky COVID-19 Vaccine Monitoring

Current as of February 2, 2021

TOTAL COVID-19 VACCINE DOSES ADMINISTERED in KY

430,825

State Program

Doses Received in KY

345,800

Doses Administered Statewide

370,020

Long Term Care Facilities (LTCF) Program

Doses Received by the LTCF Program

120,900

Doses Administered by the LTCF Program

60,805

Kentucky Draft COVID-19 Vaccine Distribution Plan

[Read Our Plan](#)

[12.28.2020 Dr. Stack Press Conference Slides- Phase 1b Update](#)

[01.04.2021 Vaccine Phases Update](#)

Phases

Phase	Description
1A	Long term care facilities, assisted living facilities, health care personnel
1B	First responders, anyone age 70 or older, K-12 school personnel
1C	Anyone age 60 or older, anyone age 16 or older with CDC highest risk C19 risk conditions, all essential workers
2	Anyone age 40 or older.
3	Anyone age 16 or older.
4	Children under the age of 16 if the vaccine is approved for this age group (est. 18% of KY population)

GOAL

Administer **90% of all vaccine** received in state
within 7 days of arrival.

PHASE 1 - A, B, C: REFERENCE

Frontline Essential Workers

- Healthcare Personnel
- First Responders (Firefighters, Police)
- Corrections
- Education (teachers, support staff, daycare)
- Food & Agriculture
- Manufacturing
- U.S. Postal service workers
- Public transit workers
- Grocery store workers

Other Essential Workers

- Transportation and logistics
- Food Service Shelter & Housing (construction)
- Finance
- IT & Communication
- Energy
- Media
- Legal
- Public Safety (Engineers)
- Water & Wastewater

Per CDC, adults of any age with the following conditions are at increase risk of severe illness from the virus that causes COVID-19:

- Cancer
- Chronic kidney disease
- COPD (chronic obstructive pulmonary disease)
- Down Syndrome
- Heart conditions, such as heart failure, coronary artery disease, or cardiomyopathies
- Immunocompromised state (weakened immune system) from solid organ transplant
- Obesity (body mass index [BMI] of 30 kg/m² or higher but less than 40 kg/m²)

General COVID-19 Vaccine Information

[When Vaccine is Limited, Who Gets Vaccinated First?](#)

[How CDC Is Making COVID-19 Vaccine Recommendations](#)

[V-Safe Information](#)

[Vaccine Safety Monitoring](#)

[COVID-19 Vaccine Manufacture Information](#)

[Billing, Costs and Reimbursement](#)

Weekly Reports

Jan 11, 2021 - [View Report](#) - [View Slides](#)

Jan 22, 2021 - [View Report](#) - [View Slides](#)

Frequently Asked Questions

[COVID-19 Vaccine- Frequently Asked Questions](#) Updated

Information for Kentuckians

The two-dose COVID-19 vaccination will be an important step to helping Kentucky get back to normal. It will also help set the course for a reimagined commonwealth where Wages, Health Care, Education, Retirement, and Leading by Example are prioritized. Our goal is to help keep Kentuckians healthy, safe, working, and back in classrooms. As we await the delivery of large quantities of the vaccine, we want to continue to be transparent and share information as it becomes known.

Plans are being developed to make sure those who are most at-risk get the vaccine first. Also, plans will help make sure that vaccines are distributed in a fair, ethical and transparent way.

More vaccines will be available over the next few weeks and months. We will continue to provide updates about vaccine distribution when more vaccine doses become available.

Cost of the Vaccine

As the CDC playbook states, the expectation is that vaccine will be administered free of charge. Providers who enroll in [KDPH's COVID-19 vaccination program](#) will receive vaccine at no cost and must agree to provide vaccine regardless of a patient's availability to pay. Providers will have the opportunity to bill insurers for administration costs and to file a reimbursement claim to a fund set up by the Health Resources and Services Administration for vaccination of uninsured individuals.

CDC Vaccine Toolkit – For You and Your Family

The CDC has a number of COVID-19 vaccine resources to help you and your family understand the COVID-19 vaccine.

- [CDC COVID-19 Vaccine Information](#)
- [Benefits of Getting Vaccinated](#)
- [Ensuring the Safety of Vaccines](#)
- [How COVID-19 Vaccines Work](#)
- [Myths and Misconceptions about COVID-19 Vaccines](#)
- [CDC COVID-19 Vaccine Frequently Asked Questions](#)
- [What to Expect at Your Appointment to Get Vaccinated for COVID-19](#)
- [What to Expect after Getting a COVID-19 Vaccine](#)
- [V-safe After Vaccination Health Checker](#)

Resources

[Centers for Disease Control and Prevention](#)

[Emergency Use Authorizations](#)

[Immunization Action Coalition](#)

Media Questions

[Information for the media](#)

Centers for Disease Control and Prevention

**Visit
CDC.gov**

[Cabinet for Health and Family Services](#)

[Policies](#) [Security](#) [Disclaimer](#) [Accessibility](#)