



MENU

View Vaccine Phases - [English](#) [Spanish](#) Vaccine Frequently Asked Questions - [Learn More](#)

When Can I Get Vaccinated?

Find out which phase of the vaccination campaign you fall in.
If you need assistance completing this tool, please call [855-598-2246](tel:855-598-2246)

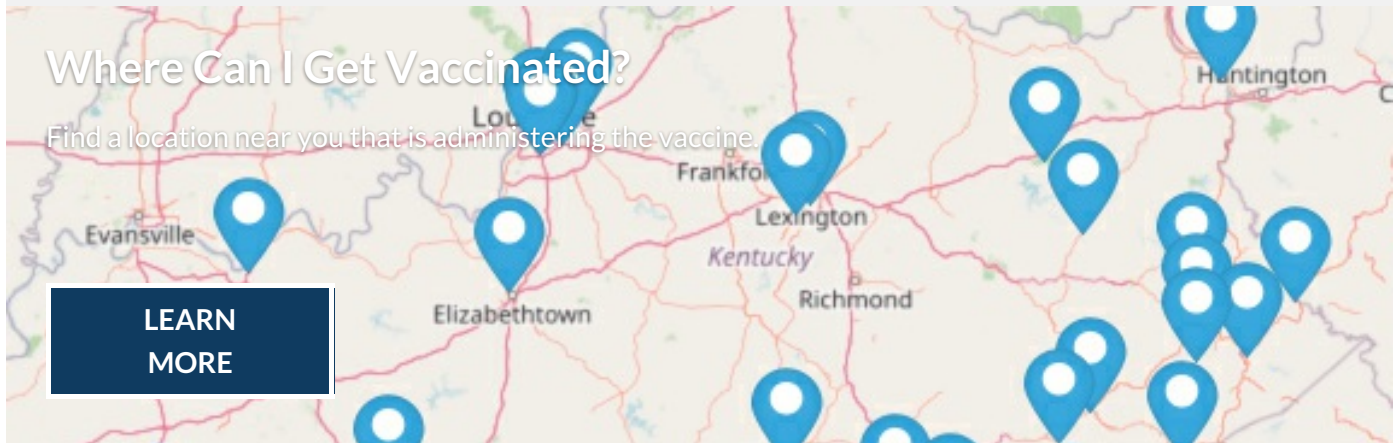


Get Started

Where Can I Get Vaccinated?

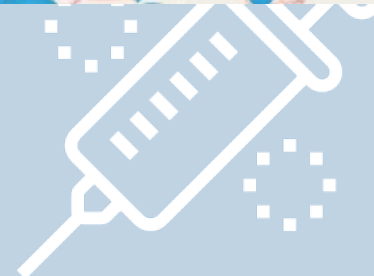
Find a location near you that is administering the vaccine.

LEARN MORE



Vaccine Provider Guidance

Kentucky's guidance and resources for vaccine providers.



[Learn More](#)

COVID-19 Vaccine

The COVID-19 Hotline (800) 722-5725 can answer general COVID-19 vaccine questions.

The Kentucky Department for Public Health (KDPH) supports Governor Andy Beshear’s prioritization of health care as a basic human right and believes every Kentucky family deserves to see a doctor and receive treatment.

Recognizing that COVID-19-related deaths currently rank third among causes of death in Kentucky, KDPH is planning for the equitable distribution of a safe and effective COVID-19 vaccine that will advance Governor Beshear’s healthcare priority. Vaccine distribution details, including the number of doses and allocation plan, are expected to change frequently. **Please visit this page for regular updates.**

Kentucky COVID-19 Vaccine Monitoring

Current as of February 23, 2021

COVID-19 Vaccination Program-to-Date Performance

	Total First Dose Allocated to KY *Updated on Tuesday for receipt of weekly Federal Allocation	Total Number of Unique Persons Vaccinated in KY *Updated Daily
State Program	639,435	481,987
LTCF Program	76,050	83,007
Federal Direct Program	Direct Federal Allocation	21,527
Federal Pharmacy Program	Direct Federal Allocation	7,859
Total	715,485	594,380

Unique Persons Vaccinated and Weekly Percent Vaccine Allocation Utilization (Tues-Mon)

< Swipe Left/Right >

Week#	Week Beginning	New Persons Vaccinated	1st Dose Allocation	7 Day % Utilization
1	Dec 15	10,213	38,025	27%
2	Dec 22	26,962	104,000	26%
3	Dec 29	37,616	60,625	62%
4	Jan 5	63,871	53,700	119%
5	Jan 12	76,721	53,800	143%
6	Jan 19	82,578	56,175	147%
7	Jan 26	74,794	56,175	133%
8	Feb 2	79,777	64,975	123%
9	Feb 9	70,627	68,475	103%
10	Feb 16	41,835	6,825	613%
11	Feb 23		152,710	
Total		564,994	715,485	79%

[Kentucky COVID-19 Vaccine Demographics](#) *This information will be updated weekly. [Archived COVID-19 Weekly Vaccine Demographics Reports](#)

Kentucky Draft COVID-19 Vaccine Distribution Plan

Read Our Plan

12.28.2020 Dr. Stack Press Conference Slides- Phase 1b Update

01.04.2021 Vaccine Phases Update

Phases

Phase	Description
1A	Long term care facilities, assisted living facilities, health care personnel
1B	Anyone age 70 or older, First responders, Kentucky K-12 school personnel, Kentucky child care workers
1C	Anyone age 60 or older, anyone age 16 or older with CDC highest risk C19 risk conditions, all essential workers
2	Anyone age 40 or older.
3	Anyone age 16 or older.
4	Children under the age of 16 if the vaccine is approved for this age group (est. 18% of KY population)

GOAL

Administer **90% of all vaccine** received in state **within 7 days of arrival.**

PHASE 1 - A, B, C: REFERENCE

Frontline Essential Workers

- Healthcare Personnel
- First Responders (Firefighters, Police)
- Corrections
- Education (teachers, support staff, daycare)

- Food & Agriculture
- Manufacturing
- U.S. Postal service workers
- Public transit workers
- Grocery store workers

Other Essential Workers

- Transportation and logistics
- Food Service Shelter & Housing (construction)
- Finance
- IT & Communication
- Energy
- Media
- Legal
- Public Safety (Engineers)
- Water & Wastewater
- Clergy

Per CDC, adults of any age with the following conditions are at increased risk of severe illness from the virus that causes COVID-19:

- Cancer
- Chronic kidney disease
- COPD (chronic obstructive pulmonary disease)
- Down Syndrome
- Heart conditions, such as heart failure, coronary artery disease, or cardiomyopathies
- Immunocompromised state (weakened immune system) from solid organ transplant
- Obesity (body mass index [BMI] of 30 kg/m² or higher but less than 40 kg/m²)
- Severe Obesity (body mass index [BMI] equal to or greater than 40 kg/m²)
- Pregnancy
- Sickle cell disease
- Type 2 diabetes mellitus

General COVID-19 Vaccine Information

[When Vaccine is Limited, Who Gets Vaccinated First?](#)

[How CDC Is Making COVID-19 Vaccine Recommendations](#)

[V-Safe Information](#)

[Vaccine Safety Monitoring](#)

[COVID-19 Vaccine Manufacture Information](#)

[Billing, Costs and Reimbursement](#)

[COVID-19 Vaccine Information for Specific Groups](#)

Weekly Reports

Jan 11, 2021 - [View Report](#) - [View Slides](#)

Jan 22, 2021 - [View Report](#) - [View Slides](#)

Jan 29, 2021 - [View Report](#) - [View Slides](#)

Feb 5, 2021 - [View Report](#) - [View Slides](#)

Frequently Asked Questions

[COVID-19 Vaccine- Frequently Asked Questions](#)

The Kentucky Department for Public Health is providing hardship assistance for persons who received their first dose of COVID-19 vaccine more than 100 miles outside the Kentucky border and it is not possible to return to that location for substantial reasons largely outside their control. Persons who received a first dose at a Kentucky regional or local site must return to the provider/site who administered their first dose.

Assistance is requested by completing the “COVID-19 Vaccine Unsupported Second Dose Assistance” form at [COVID-19 Unsupported Second Dose Assistance Survey](#). Applicants are required to upload a picture of their photo ID and COVID-19 Vaccination Record Card. General public inquiries and questions may contact the Vaccine Management Call Center at **(855) 598-2246**.

Information for Kentuckians

The two-dose COVID-19 vaccination will be an important step to helping Kentucky get back to normal. It will also help set the course for a reimagined commonwealth where Wages, Health Care, Education, Retirement, and Leading by Example are prioritized. Our goal is to help keep Kentuckians healthy, safe, working, and back in classrooms. As we await the delivery of large quantities of the vaccine, we want to continue to be transparent and share information as it becomes known.

Plans are being developed to make sure those who are most at-risk get the vaccine first. Also, plans will help make sure that vaccines are distributed in a fair, ethical and transparent way.

More vaccines will be available over the next few weeks and months. We will continue to provide updates about vaccine distribution when more vaccine doses become available.

Cost of the Vaccine

As the CDC playbook states, the expectation is that vaccine will be administered free of charge. Providers who enroll in [KDPH's COVID-19 vaccination program](#) will receive vaccine at no cost and must agree to provide vaccine regardless of a patient's availability to pay. Providers will have the opportunity to bill insurers for administration costs and to file a reimbursement claim to a fund set up by the Health Resources and Services Administration for vaccination of uninsured individuals.

CDC Vaccine Toolkit – For You and Your Family

The CDC has a number of COVID-19 vaccine resources to help you and your family understand the COVID-19 vaccine.

- [CDC COVID-19 Vaccine Information](#)
- [Benefits of Getting Vaccinated](#)
- [Ensuring the Safety of Vaccines](#)
- [How COVID-19 Vaccines Work](#)
- [Myths and Misconceptions about COVID-19 Vaccines](#)
- [CDC COVID-19 Vaccine Frequently Asked Questions](#)
- [What to Expect at Your Appointment to Get Vaccinated for COVID-19](#)
- [What to Expect after Getting a COVID-19 Vaccine](#)
- [V-safe After Vaccination Health Checker](#)

Resources

[Centers for Disease Control and Prevention](#)

[Emergency Use Authorizations](#)

[Immunization Action Coalition](#)

Media Questions

[Information for the media](#)

Centers for Disease Control and Prevention

**Visit
CDC.gov**

[Cabinet for Health and Family Services](#)

[Policies](#) [Security](#) [Disclaimer](#) [Accessibility](#)