



MENU

[View Vaccine Phases - English](#) [Spanish](#) [Vaccine Frequently Asked Questions - Learn More](#)

When Can I Get Vaccinated?

Find out which phase of the vaccination campaign you fall in.
If you need assistance completing this tool, please call [855-598-2246](tel:855-598-2246)

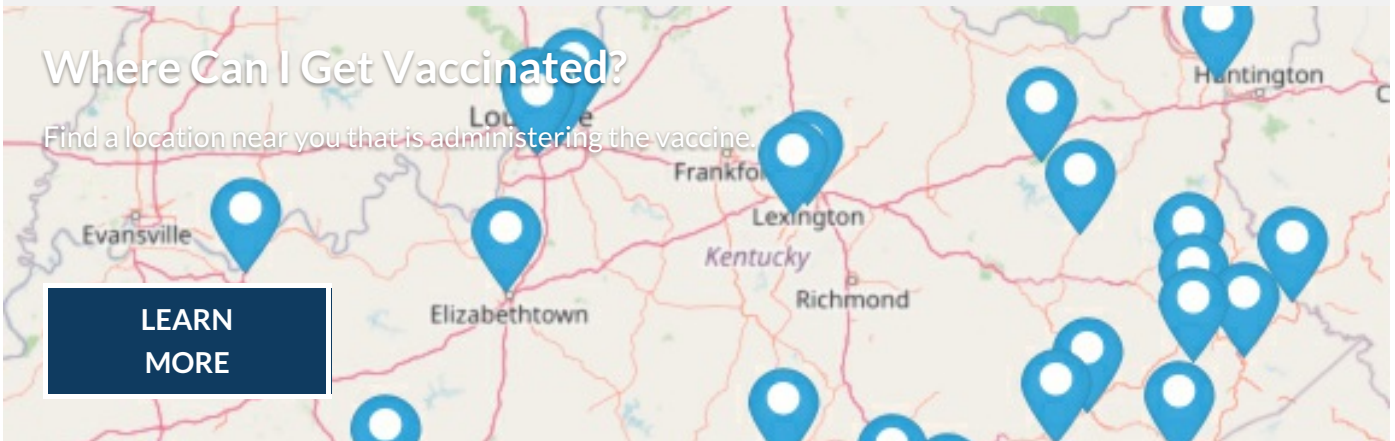
Get Started



Where Can I Get Vaccinated?

Find a location near you that is administering the vaccine.

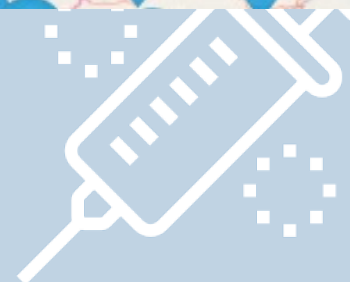
LEARN MORE



Vaccine Provider Guidance

Kentucky's guidance and resources for vaccine providers.

[Learn More](#)



Need help with transportation to a COVID-19 vaccine appointment?

[Learn More](#)

COVID-19 Vaccine

The COVID-19 Hotline (800) 722-5725 can answer general COVID-19 vaccine questions.

The Kentucky Department for Public Health (KDPH) supports Governor Andy Beshear's prioritization of health care as a basic human right and believes every Kentucky family deserves to see a doctor and receive treatment.

Recognizing that COVID-19-related deaths currently rank third among causes of death in Kentucky, KDPH is planning for the equitable distribution of a safe and effective COVID-19 vaccine that will advance Governor Beshear's healthcare priority. Vaccine distribution details, including the number of doses and allocation plan, are expected to change frequently. **Please visit this page for regular updates.**

[Guidance for COVID-19 Quarantine for Vaccinated Persons](#) New

Kentucky COVID-19 Vaccine Monitoring

Current as of March 22, 2021

COVID-19 Vaccination Program-to-Date Performance

	Total First Dose Allocated to KY *Updated on Tuesday for receipt of weekly Federal Allocation	Total Number of Unique Persons Vaccinated in KY *Updated Daily
Federal Direct Program	Direct Federal Allocation	31,720
LTCF Program *Program concluded 02/17/2021	76,050	78,084
All Other State and Federal Programs	1,155,915	1,064,570
Total	1,231,965	1,174,374

Unique Persons Vaccinated and Weekly Percent Vaccine Allocation Utilization (Tues-Mon)

< Swipe Left/Right >

Week#	Week Beginning	New Persons Vaccinated	1st Dose Allocation	7 Day % Utilization
1	Dec 15	10,213	38,025	27%
2	Dec 22	26,962	104,000	26%
3	Dec 29	37,616	60,625	62%
4	Jan 5	63,871	53,700	119%
5	Jan 12	76,721	53,800	143%
6	Jan 19	82,578	56,175	147%
7	Jan 26	74,794	56,175	133%
8	Feb 2	79,777	64,975	123%
9	Feb 9	70,627	68,475	103%
10	Feb 16	41,835	6,825	613%
11	Feb 23	112,428	152,710	73.6%
12	Mar 2	127,110	130,210	97.6%
13	Mar 9	165,217	98,390	168%
14	Mar 16*	172,905	287,880	60.1%
Total		1,142,654	1,231,965	92.8%

*One lump sum was added to March 16th of the Federal Rx program. Going forward, data will reflect a combined total from all other State and Federal Programs.

Frequently Asked Questions

[Download Full FAQ's English](#)



Kentucky Draft COVID-19 Vaccine Distribution Plan

[Read Our Plan](#)

[Dr. Stack Press Conference Slides](#)

[Vaccine Phases Update](#)

Phases

Phase	Description
1A	Long term care facilities, assisted living facilities, health care personnel
1B	Anyone age 70 or older, First responders, Kentucky K-12 school personnel, Kentucky child care workers
1C	Anyone age 60 or older, anyone age 16 or older with medical or behavioral health conditions per the CDC that "are" or "might be" at increased risk of severe COVID-19 disease, all essential workers
2	Anyone age 40 or older
3	Anyone age 16 or older
4	Children under the age of 16 if the vaccine is approved for this age group (est. 18% of KY population)

GOAL

Administer **90% of all vaccine** received in state **within 7 days of arrival.**

PHASE 1 - A, B, C: REFERENCE

Frontline Essential Workers

- Healthcare Personnel
- First Responders (Firefighters, Police)
- Corrections
- Education (teachers, support staff, daycare)
- Food & Agriculture
- Manufacturing
- U.S. Postal service workers
- Public transit workers
- Grocery store workers

Other Essential Workers

- Transportation and logistics
- Food Service Shelter & Housing (construction)
- Finance
- IT & Communication
- Energy
- Media
- Legal
- Public Safety (Engineers)
- Water & Wastewater
- Clergy

Adults of any age with medical or behavioral health conditions per the CDC that “are” or “might be” at increased risk of severe COVID-19 disease:

- Cancer
- Chronic kidney disease
- COPD (chronic obstructive pulmonary disease)
- Down Syndrome
- Heart conditions, such as heart failure, coronary artery disease, or cardiomyopathies
- Immunocompromised state (weakened immune system) from solid organ transplant
- Obesity (body mass index [BMI] of 30 kg/m² or higher but less than 40 kg/m²)
- Severe Obesity (body mass index [BMI] equal to or greater than 40 kg/m²)
- Pregnancy
- Sickle cell disease
- Type 2 diabetes mellitus
- Asthma (moderate-to-severe)
- Cerebrovascular disease (affects blood vessels and blood supply to the brain)
- Cystic fibrosis
- Hypertension of high blood pressure
- Immunocompromised state (weakened immune system) from blood, bone marrow, or organ transplant; HIV; use of corticosteroids; or use of other immune weakening medicines
- Neurologic conditions, such as dementia
- Liver disease
- Overweight (BMI higher than 25 kg/m², but less than 30 kg/m²)

- Pulmonary fibrosis (having damaged or scarred lung tissues)
- Thalassemia (a type of blood disorder)
- Type 1 diabetes mellitus

Weekly Reports

Jan 11, 2021 - [View Report](#) - [View Slides](#)

Jan 22, 2021 - [View Report](#) - [View Slides](#)

Jan 29, 2021 - [View Report](#) - [View Slides](#)

Feb 5, 2021 - [View Report](#) - [View Slides](#)

General COVID-19 Vaccine Information

[When Vaccine is Limited, Who Gets Vaccinated First?](#)

[How CDC Is Making COVID-19 Vaccine Recommendations](#)

[V-Safe Information](#)

[Vaccine Safety Monitoring](#)

[COVID-19 Vaccine Manufacture Information](#)

[Billing, Costs and Reimbursement](#)

[COVID-19 Vaccine Information for Specific Groups](#)

CDC Vaccine Toolkit – For You and Your Family

The CDC has a number of COVID-19 vaccine resources to help you and your family understand the COVID-19 vaccine.

- [CDC COVID-19 Vaccine Information](#)
- [Benefits of Getting Vaccinated](#)
- [Ensuring the Safety of Vaccines](#)
- [How COVID-19 Vaccines Work](#)
- [Myths and Misconceptions about COVID-19 Vaccines](#)
- [CDC COVID-19 Vaccine Frequently Asked Questions](#)
- [What to Expect at Your Appointment to Get Vaccinated for COVID-19](#)
- [What to Expect after Getting a COVID-19 Vaccine](#)
- [V-safe After Vaccination Health Checker](#)

Resources

[Centers for Disease Control and Prevention](#)

[Emergency Use Authorizations](#)

[Immunization Action Coalition](#)

Media Questions

[Information for the media](#)

Centers for Disease Control and Prevention

Visit
[CDC.gov](https://www.cdc.gov)

[Cabinet for Health and Family Services](#)

[Policies](#) [Security](#) [Disclaimer](#) [Accessibility](#)