



Browsers that can not handle javascript will not be able to access some features of this site.



OFFICIAL WEBSITE OF MICHIGAN.GOV

# Coronavirus



## Questions About COVID-19?

Visit our [Frequently Asked Questions](#) page

Our most commonly answered questions can be found there, and are updated often.

Call the COVID-19 Hotline at 888-535-6136.

Email [COVID19@michigan.gov](mailto:COVID19@michigan.gov).

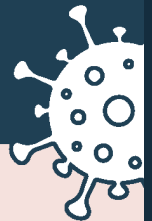
**NEW: MDHHS EPIDEMIC ORDERS**

## LEARN ABOUT THE NOVEMBER 18 EPIDEMIC ORDER



COVID-19

# PAUSE TO SAVE LIVES



### Open



Two-household gathering (high precautions)\*



Small outdoor gatherings (25 people)



Retail



Preschool through 8th grade (local district choice)



Childcare



Manufacturing, construction, other work that is impossible to do remotely



Public transit



Hair salons, barber shops, other personal services



Gyms and pools (for individual exercise)



Restaurants and bars (outdoor dining, takeout, and delivery)



Professional sports\*\* (without spectators)



Parks and outdoor recreation



Funerals (25 people)



Health care

\*See Social Gathering Guidance.

\*\*Includes a limited number of NCAA sports.

### Not open



High schools (in-person learning)



Theaters, movie theaters, stadiums, arenas



Colleges and universities (in-person learning)



Bowling centers, ice skating rinks, indoor water parks



Workplaces, when work can be done from home



Bingo halls, casinos, arcades



Restaurants and bars (indoor dining)



Group fitness classes



Organized sports, except professional sports

For more information about the order, visit [Michigan.gov/Coronavirus](https://Michigan.gov/Coronavirus). Questions or concerns can be emailed to [COVID19@michigan.gov](mailto:COVID19@michigan.gov).



Protect yourself and your community



## MI COVID ALERT

Protect yourself and your community by stopping the spread of COVID-19. Download the app and get notifications if you may have been exposed to the virus.

[GET THE APP](#)

[DON'T BRING COVID HOME. GET TESTED.](#)

[FIND A TEST SITE](#)

## SPREAD HOPE, NOT COVID

Learn how masks reduce the spread and can help safely reopen Michigan.

[MORE INFORMATION](#)



## MI SAFE START

All Regions of Michigan are in Mi Safe Start Reopening Phase 4

The MI Safe Start Plan outlines how we are re-engaging the economy while keeping our communities safe.

[MI SAFE SCHOOLS ROADMAP 🇺🇸](#)

[MI SAFE START SITE](#)

[MI SAFE START PUBLIC GUIDANCE](#)

[MI SAFE START MAP DASHBOARD](#)

## FREQUENTLY ASKED COVID-19 QUESTIONS

[About COVID-19, Symptoms & Testing](#)

[Employees](#)

[Employers](#)

[Executive Orders & Executive Directives](#)

[Outdoor Recreation](#)

[Schools & Universities](#)

## OTHER COMMONLY ASKED COVID-19 QUESTIONS



---

### LATEST MICHIGAN NEWS

[New Neighborhood Testing Site to begin offering COVID-19 testing in Warren on December 3](#)

[Statement from MDHHS Director Robert Gordon on latest favorable court ruling in Michigan Restaurant & Lodging Association lawsuit](#)

[UIA releases report on potential fraud exposure](#)

### MORE CORONAVIRUS NEWS

## WHERE WE STAND WITH COVID-19

The State of Michigan is working around the clock to test and treat COVID-19 patients. Below is the most recent data healthcare experts across the state have compiled. It is updated Monday - Saturday.

Total Confirmed Cases

**380,343**

Total COVID-19 Deaths

**9,580**

Daily Confirmed Cases

**7,146**

Daily COVID-19 Deaths

**175\***

\*The deaths announced today includes 112 deaths identified during a Vital Records review. See cumulative data page for more information.

12/03/2020

[SEE CUMULATIVE DATA](#)

## RESOURCES AND ASSISTANCE

### [Emergency Assistance](#)

Apply for energy, health insurance, food & other assistance through MIBridges

## Unemployment Assistance

Apply for unemployment assistance through the Michigan Unemployment Insurance Agency

## Business Assistance

Find COVID-19 Workplace Safety Guidance

## GET THE LATEST FROM THE CDC

The United States Center for Disease Control and Prevention has more information at a federal level about COVID-19 and our current pandemic. Click the link below to access the federal government's information and resources.

[VISIT CDC.GOV](https://www.cdc.gov)



[MICHIGAN.GOV HOME](#)

[ADA](#)

[MICHIGAN NEWS](#)

[POLICIES](#)

COPYRIGHT 2020 STATE OF MICHIGAN