



## Coronavirus Disease 2019 (COVID-19)

*Updated March 10, 2021*

Mississippi COVID-19 Hotline (7 days a week, 7 a.m.–7 p.m.): **877-978-6453**

**Guidance for adults 65 and over, or 16 and older with medical conditions:** All Mississippi residents aged 65 or older, or 16 and older with serious chronic medical conditions, should avoid all social gatherings outside of the household or any in-person mass gathering, including religious ceremonies, or sporting events, until fully protected by an approved COVID-19 vaccine. [Details »](#)

---

## General Information

- ▶ [COVID-19 vaccinations and Mississippi vaccination summary](#)
- ▶ [COVID-19 overview, questions and answers, and other resources](#)
- ▶ [COVID-19 and You: Video Q & A with State Health Officer Dr. Thomas Dobbs](#)
- ▶ [ASL, Spanish and Vietnamese materials](#)

## Healthcare Professionals

Guidance and more →

- ▶ [Healthcare guidance](#)

- ▶ [Electronic reporting](#)
- ▶ [Vaccine providers](#)
- ▶ [Specimens](#)
- ▶ [Lab dropoff](#)
- ▶ [Facilities guidance](#)
- ▶ [MS-HAN Alerts](#)

---

## [ALL HEALTHCARE](#)

### Current Cases and Statistics

County and state data →

- ▶ [Today's update](#)
- ▶ [State data and reports](#)
- ▶ [County data](#)
- ▶ [Charts and maps](#)
- ▶ [Hospitalizations](#)
- ▶ [Lab testing](#)
- ▶ [Recoveries](#)

---

## [ALL STATISTICS](#)

### Prevention, Testing and Guidance

Personal and community →

- ▶ [Getting tested](#)
- ▶ [Personal protection](#)
- ▶ [Gatherings and events](#)
- ▶ [Business and community](#)
- ▶ [School guidelines](#)
- ▶ [State agencies](#)
- ▶ [Vaccinations](#)

---

## [ALL GUIDANCE](#)

---

## COVID-19 in Mississippi

New Cases and Deaths as of March 9

**NEW CASES**

437

New COVID-19 positive test results reported to MSDH as of 3 p.m. yesterday.

TOTAL MISSISSIPPI CASES

298,445

▶ [Totals by county](#)

NEW DEATHS

11

New COVID-19 related deaths reported to MSDH as of 3 p.m. yesterday.

Eight deaths occurred between February 27 and March 8 in the counties below:

▶ [County list](#)

Three deaths occurred between February 12 and February 27, identified from death certificate reports.

▶ [County list](#)

TOTAL MISSISSIPPI DEATHS

6,845

▶ [Totals by county](#)

LTC OUTBREAKS

50

Current outbreaks in long-term care (LTC) facilities only. (See [LTC facility outbreak definition](#).)

▶ [Cases by county](#)

**About our case counts:** We currently update our case totals each day based on test results from the previous day. Outside laboratories also report positive test results to us, which are included in our totals. Multiple positive tests for the same individual are counted only once. County case numbers and deaths may change as investigation finds new or additional information.

# Statewide COVID-19 Data and Reports

## ▶ [K-12 School Reports](#)

Weekly COVID-19 cases, outbreaks and exposure reported by Mississippi schools

## ▶ [Long-Term Care Facility and Residential Care Facility COVID-19 Reports](#)

Data reported directly to MSDH by the facility; cases and deaths in these reports may not yet be included in our totals of lab-reported cases.

## ▶ [Ongoing Outbreaks in Nursing Homes](#)

A wide variety of data from the Centers for Medicare and Medicaid (CMS)

## ▶ [Deaths from COVID-19 and Other Causes](#) PDF

Provisional counts by week of deaths from COVID-19, pneumonia/influenza, and heart disease

## ▶ [Laboratory Testing](#)

Number and type of COVID-19 tests performed

## ▶ [Mississippi COVID-19 Vaccination Report](#) PDF

Vaccinations distributed and administered as reported to MSDH by vaccination providers

## ▶ [Statewide data charts](#)

## County COVID-19 Data

### Race and Ethnicity

#### ▶ [Total COVID-19 cases and deaths by county, race and ethnicity](#) PDF

Current and past data tables, updated daily

### Data Snapshots for Individual Counties

#### ▶ [Weekly COVID-19 snapshots for each Mississippi county](#)

### High Cases and Incidence

#### ▶ [Map of Mississippi counties by 7-day incidence](#)

#### ▶ [Table of counties ranked by weekly cases and incidence](#)

### Cumulative Cases and Deaths by County

Totals of all reported COVID-19 cases, including those in long-term care (LTC) facilities.

**The numbers in this table are provisional.** County case numbers and deaths may change as investigation finds new or additional information. The data provided below is the most current available.

County	Total Cases	Total Deaths	Total LTC Facility Cases	Total LTC Facility Deaths
<a href="#">Adams</a>	2366	79	78	15
<a href="#">Alcorn</a>	2929	63	130	20
<a href="#">Amite</a>	1132	37	55	9
<a href="#">Attala</a>	2106	71	175	36
<a href="#">Benton</a>	941	24	45	10
<b>Total</b>	<b>298,445</b>	<b>6,845</b>	<b>10,406</b>	<b>1,963</b>

County	Total Cases	Total Deaths	Total LTC Facility Cases	Total LTC Facility Deaths
Bolivar	4641	125	232	31
Calhoun	1592	29	36	5
Carroll	1197	25	51	10
Chickasaw	2020	54	60	15
Choctaw	704	17	1	0
Claiborne	993	30	45	9
Clarke	1714	74	123	31
Clay	1795	53	38	5
Coahoma	2838	69	129	11
Copiah	2806	59	81	11
Covington	2511	80	136	39
De Soto	19868	233	113	24
Forrest	7320	139	226	51
Franklin	769	20	40	4
George	2329	45	59	7
Greene	1284	33	52	6
Grenada	2494	79	155	32
Hancock	3562	78	69	14
Harrison	16962	290	485	68
Hinds	19021	397	805	131
Holmes	1836	70	104	20
Humphreys	936	29	34	8
Issaquena	167	6	0	0
Itawamba	2910	75	134	23
Jackson	12784	234	240	35
Jasper	2157	45	43	2
Jefferson	631	27	40	7
Jefferson Davis	1029	31	8	1
Jones	8066	149	219	41
Kemper	919	23	44	9
Lafayette	5779	114	187	55
Lamar	5956	82	53	13
Lauderdale	6903	229	443	100
<b>Total</b>	<b>298,445</b>	<b>6,845</b>	<b>10,406</b>	<b>1,963</b>

County	Total Cases	Total Deaths	Total LTC Facility Cases	Total LTC Facility Deaths
Lawrence	1218	21	27	2
Leake	2554	72	88	15
Lee	9736	163	222	41
Leflore	3414	123	236	52
Lincoln	3680	104	186	39
Lowndes	6068	141	256	62
Madison	9569	204	366	69
Marion	2594	78	158	24
Marshall	4075	96	64	15
Monroe	3999	129	190	55
Montgomery	1235	40	54	9
Neshoba	3865	172	203	59
Newton	2343	53	87	15
Noxubee	1236	31	35	6
Oktibbeha	4444	96	222	36
Panola	4351	99	103	14
Pearl River	4232	132	188	36
Perry	1236	36	21	8
Pike	3047	97	133	35
Pontotoc	4118	71	86	12
Prentiss	2714	58	99	15
Quitman	777	15	0	0
Rankin	12877	266	392	61
Scott	2973	71	115	18
Sharkey	492	17	43	8
Simpson	2791	81	157	20
Smith	1546	34	66	8
Stone	1738	29	84	14
Sunflower	3222	87	121	20
Tallahatchie	1720	39	50	7
Tate	3103	76	80	19
Tippah	2810	66	119	13
Tishomingo	2134	66	102	27
<b>Total</b>	<b>298,445</b>	<b>6,845</b>	<b>10,406</b>	<b>1,963</b>

County	Total Cases	Total Deaths	Total LTC Facility Cases	Total LTC Facility Deaths
Tunica	1009	24	18	2
Union	3974	74	131	23
Walthall	1260	41	69	13
Warren	4148	115	170	37
Washington	5236	130	191	39
Wayne	2563	41	69	11
Webster	1112	32	61	12
Wilkinson	628	27	25	5
Winston	2226	79	130	39
Yalobusha	1468	36	82	22
Yazoo	2943	66	139	18
<b>Total</b>	<b>298,445</b>	<b>6,845</b>	<b>10,406</b>	<b>1,963</b>

## Case Classifications

Mississippi investigates and reports both probable and confirmed cases and deaths according to the [CSTE case definition](#).

	Confirmed	Probable	Total
Cases	184,616	113,829	<b>298,445</b>
Deaths	4,759	2,086	<b>6,845</b>

Confirmed cases and deaths are generally determined by positive PCR tests, which detect the presence of ongoing coronavirus infection.

Probable cases are those who test positive by other testing methods such as antibody or antigen, and have recent symptoms consistent with COVID-19, indicating a recent infection.

Probable deaths are those individuals with a designation of COVID-19 as a cause of death on the death certificate, but where no confirmatory testing was performed.

---

## Mississippi COVID-19 Data Charts and Maps

All data reports below are updated as they become available.

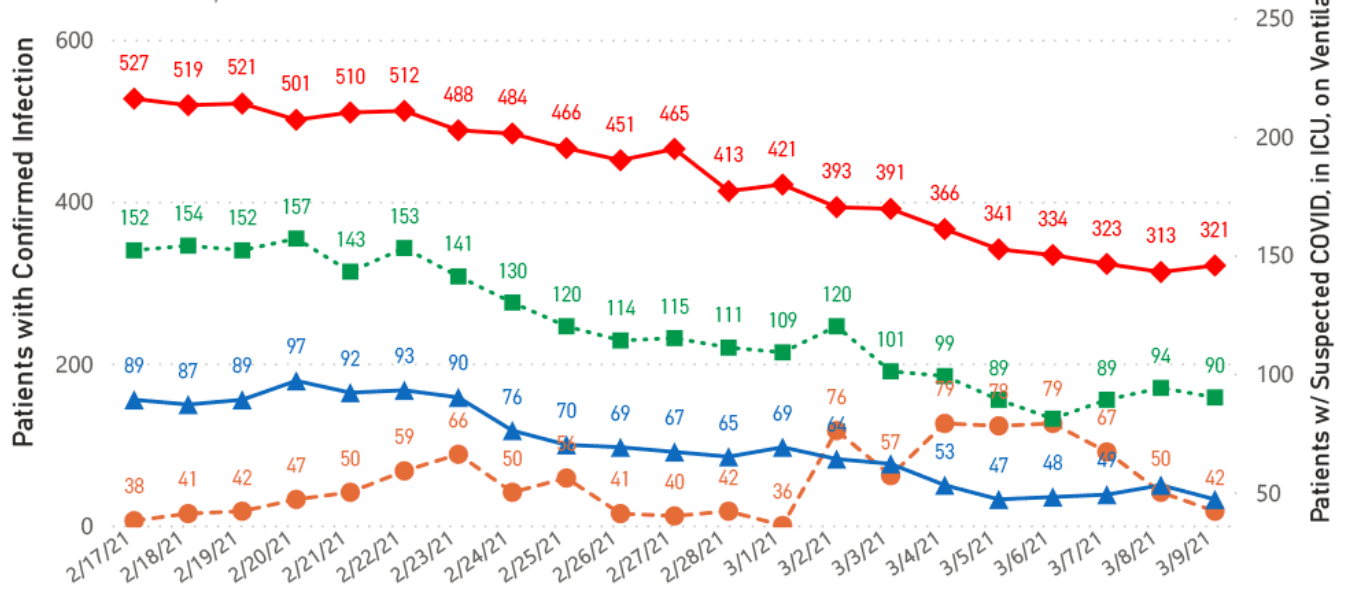
## Hospitalizations and Bed Availability

▶ [View interactive hospitalization charts](#)

## COVID-19 Hospitalizations Reported by MS Hospitals, 2/17/21-3/9/21 \*\*,\*

◆ Patients with Confirmed Infection ● Patients with Suspected Infection ■ Patients in an ICU ▲ Patients on Ventilators

\* Patients in ICU and on ventilators are COVID-19 confirmed.  
 \*\* Data are provisional.



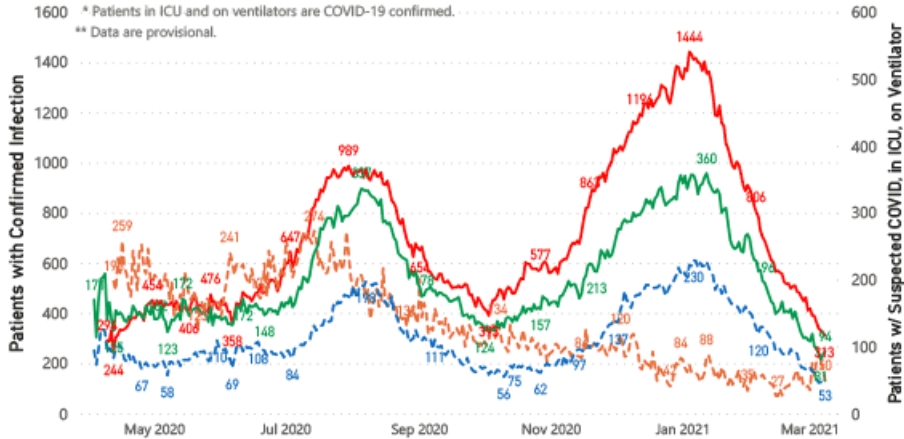
## Hospitalization and ICU Use to Date

Updated weekly

## COVID-19 Hospitalizations Trends, Reported by MS Hospitals as of 3/8/21 \*\*,\*

— Patients with Confirmed Infection — Patients with Suspected Infection — Patients in an ICU — Patients on Ventilators

\* Patients in ICU and on ventilators are COVID-19 confirmed.  
 \*\* Data are provisional.



## Daily Case Maps

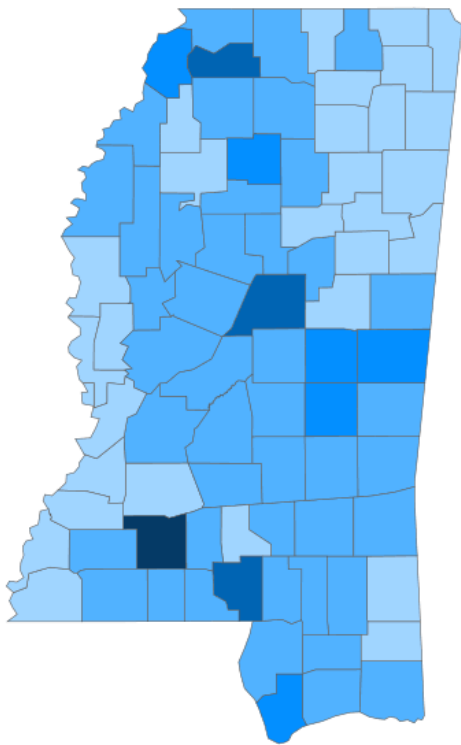
▶ [View all interactive maps](#)

## Recent COVID-19 Activity

The chart below shows counties according to COVID-19 incidence (cases by population) over the last 7 days. Also see [weekly county incidence tables](#)



Mississippi COVID-19 Cases Incidence Rate \*  
as of March 9, 2021



● <10.0 ● 10.0 to 20.0 ● 20.0 to 30.0 ● 30.0 to 40.0 ● >40.0

\* Based on average daily new cases of past 7 days per 100,000 population.

## Mississippi

7 Day Average  
New Cases

**395.7**

Cumulative Cases

**298,445**

7 Day Average  
Incidence Rate \*

**13.3**

2019 Estimated Population

**2,976,148**

County	Incidence Rate	New Cases (7-Day Avg)	2019 Est. Population	Mask Mandate Status	Mask Mandate Started	Mask Mandate Ended
Lincoln	53.5	18.3	34,153	Active	11/24/20	
Marion	39.0	9.6	24,573	None		
Tate	36.3	10.3	28,321	Active	11/16/20	
Attala	31.4	5.7	18,174	Active	11/24/20	
Newton	23.8	5.0	21,018	None		
Tunica	23.7	2.3	9,632	None		
Neshoba	23.5	6.9	29,118	Active	11/24/20	
Kemper	23.5	2.3	9,742	None		
Hancock	21.9	10.4	47,632	None		
Yalobusha	21.2	2.6	12,108	Active	11/10/20	

### Cumulative COVID-19 Cases

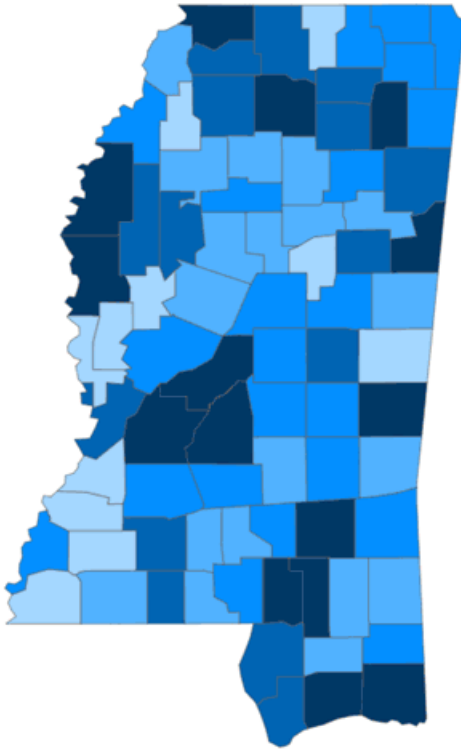
Total cases and deaths by county since the start of the pandemic. Also see [weekly estimate of recoveries](#)

Mississippi COVID-19  
Cases and Deaths by Race with Ethnicity  
as of 3 pm CT, March 9, 2021

# Mississippi

Total Cases

298,445



	American Indian or Alaska Native	Asian	Black	White	Other	Unknown
Non Hispanic	1,216	1,088	80,636	114,683	2,939	2,465
Hispanic	58	35	409	1,912	3,442	688
Unknown Ethnicity	1,006	336	17,477	26,697	7,136	36,222

Total Deaths

6,845

	American Indian or Alaska Native	Asian	Black	White	Other	Unknown
Non Hispanic	89	12	2,335	3,140	39	15
Hispanic	1	1	7	29	20	2
Unknown Ethnicity	25	7	352	550	64	157

● 1 to 1000 ● 1001 to 2000 ● 2001 to 3000 ● 3001 to 4500 ● >4500

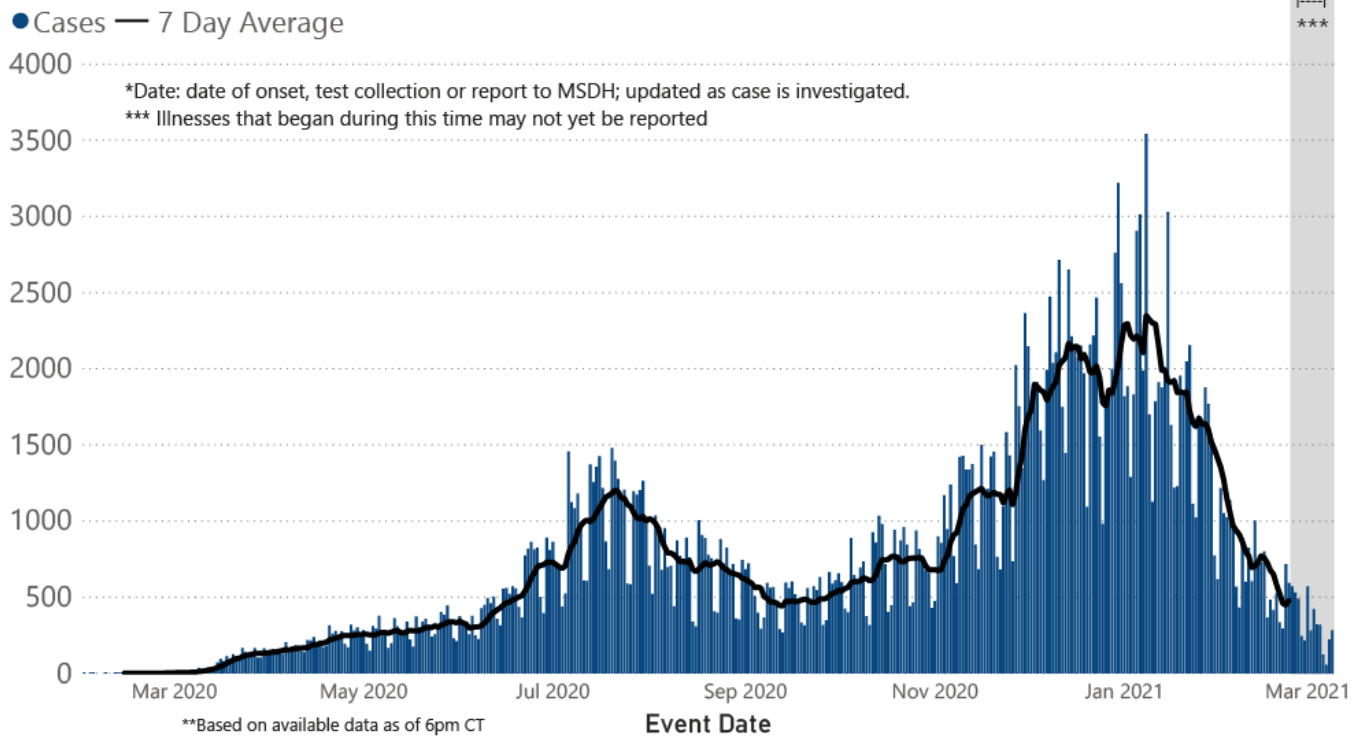
## Daily Statewide Data Charts

Our state case map and other data charts are also available in interactive form.

▶ [View interactive epidemiological and surveillance charts](#)

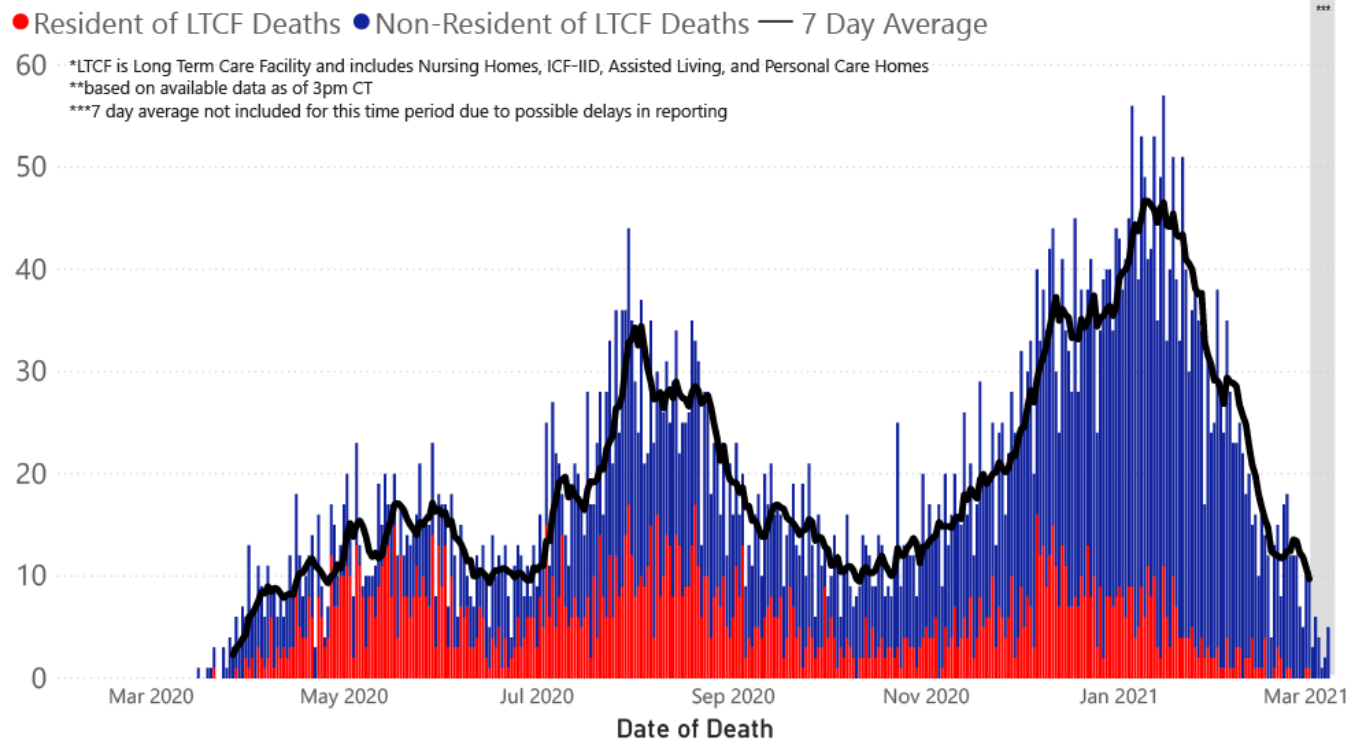
The charts below are based on available data at the time of publication. Charts do **not** include cases where insufficient details of the case are known.

## COVID-19 Cases by Date\* through March 9, 2021\*\*, Mississippi



**Note:** Values up to two weeks in the past on the chart of Cases by Date above can change as we update it with new information from disease investigation.

## COVID-19 LTCF\* and Non-LTCF Deaths by Date of Death through March 9, 2021\*\*, Mississippi



## Weekly Statewide Data Charts

Includes:

- Cases, deaths and hospitalizations, analyzed by age, race/ethnicity, gender and other factors

- MIS-C cases and deaths
- Counties with high COVID-19 cases and incidence
- Syndromic surveillance

▶ [All weekly charts](#)

## Estimated Recoveries

Presumed COVID-19 cases recovered, estimated weekly (does not include cases still under investigation).

### COVID-19 Presumed Recovered Cases through March 8, 2021, Mississippi

283,953

Presumed Recovered\*

\*Reflects Provisional Estimates. Presumed Recovered if:

- 1) It has been 14 days or more since the case tested positive, if they were not hospitalized
- 2) It has been 21 days or more since the case tested positive, if they were hospitalized or hospitalization was unknown.

All deaths excluded. Presumed recovered counts will be updated weekly.

## U.S. and World Cases

- ▶ [COVID-19 cases in the United States \(CDC\)](#)
- ▶ [U.S. COVID-19 Tracker \(CDC\)](#)
- ▶ [COVID-19 Global Case Map \(Johns Hopkins University\)](#)

## COVID-19 Testing

### Statewide Combined Testing as of March 7.

COVID-19 testing providers around the state include commercial laboratories, hospital labs and the MSDH Public Health Laboratory results from all these sources are combined in the table below. (Updated weekly)

**PCR** testing detects current, active COVID-19 infection in an individual.

**Antibody** (serology) testing identifies individuals with past COVID-19 infection based on antibodies they develop one to

three weeks after infection.

**Antigen** testing is another way to identify current COVID-19 infection.

PCR tests	1,666,853
Serology (antibody) tests	83,470
Antigen tests	772,353
<b>Total tests</b>	<b>2,522,676</b>

▶ [Getting tested for COVID-19](#)

---

## Prevention and Guidance for Individuals and the Community

▶ [Preventive steps to take, recommendations, guidance and general information on COVID-19](#)

Get COVID-19 e-mail updates daily with our free newsletter:



Last reviewed on Mar 5,  
2020

[error on this](#)

[email page](#)

[print](#)

### *Related resources*

- ▶ [IT IS REAL: COVID-19 as Told by Survivors](#)
- ▶ [Free COVID-19 Testing and Local Testing Providers](#)
- ▶ [COVID-19 Guidance and Prevention for Individuals and the Community](#)  
Updated March 2, 2021

### *More topics*

- ▶ [\[ Espanol, Tieng Viet, ASL \]](#)
- ▶ [County Data](#)
- ▶ [Diagnostic Testing EUA](#)
- ▶ [Handouts and Posters](#)
- ▶ [Healthcare Professionals](#)
- ▶ [Interactive Maps and Charts](#)
- ▶ [Prevention and Safety Guidance](#)
- ▶ [School Cases and Outbreaks](#)
- ▶ [Statewide COVID-19 Data](#)
- ▶ [Testing for COVID-19](#)
- ▶ [Vaccination Against COVID-19](#)

# Free COVID-19 Rapid Testing

Free drive-through testing open to the public

Available in all counties

No symptoms required for college students and others

[Check our weekly schedule of free testing locations statewide](#)

[FULL INFORMATION](#)

## **AGENCY**

[About Us](#)

[Administration](#)

[Board of Health](#)

[County Offices](#)

[Institutional Review](#)

[Jobs](#)

[Locations](#)

[Public Health Laboratory](#)

[RFPs/Grants](#)

[More »](#)

---

[Intranet](#)

[OHIT+ER Service Center](#)

[Webmail](#)

## **INFORMATION**

[Apps](#)

[Calendar of Events](#)

[Contact Us](#)

[Meetings](#)

[Health Resources](#)

[Hotlines](#)

[Locations](#)

[News](#)

[Newsletter](#)

[Phone Numbers](#)

[Español](#)

## **I NEED A ...**

[Birth Certificate](#)

[Certificate of Need](#)

[Children's Health Insurance](#)

[Complaint Form](#)

Criminal History Check  
Death Certificate  
Divorce Record  
Food Permit  
Immunization Record  
J-1 Visa  
License Verification  
Marriage Record  
Professional License  
Public Records Request  
Wastewater Application

#### **PUBLICATIONS**

Annual Report  
CON Weekly Reports  
Health Facilities Directory  
Mississippi Morbidity Reports  
Public Health Report  
State Health Plan  
Strategic Plan  
*More »*

Mississippi State Department of Health • 570 East Woodrow Wilson Dr • Jackson, MS 39216 • 866-HLTHY4U • Contact and information

