

**Sheila Hogan, Director**

**Children/Families**

**Disabilities**

**Seniors**

**Health**

[Home](#) » [Public Health & Safety](#) » [Communicable Disease Epidemiology](#) » [Diseases A to Z](#) » [Coronavirus](#) » [Demographics](#)

## Coronavirus Disease 2019 (COVID-19)

[Analysis of COVID-19 Cases in Montana as of 9/18/2020](#)

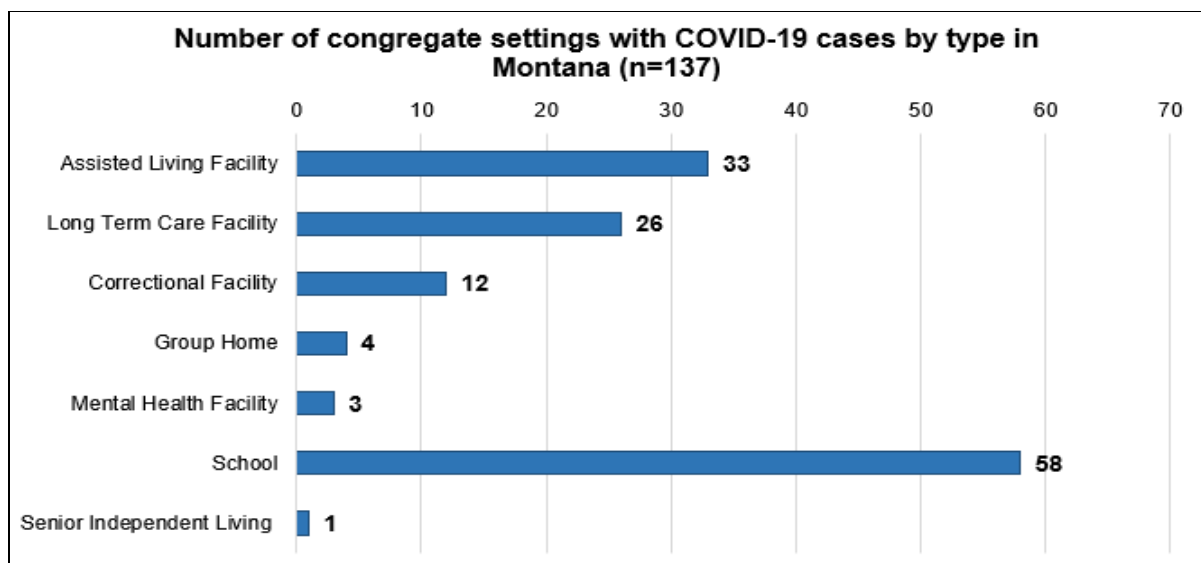
[Archive of COVID-19 Montana Analyses](#)



### Demographic Information for Confirmed Cases

COVID-19 Cases in Montana	
Total Number of Cases	11,242
- Number of Deaths	165

*\* Tables and charts are updated by 10 am every morning.*



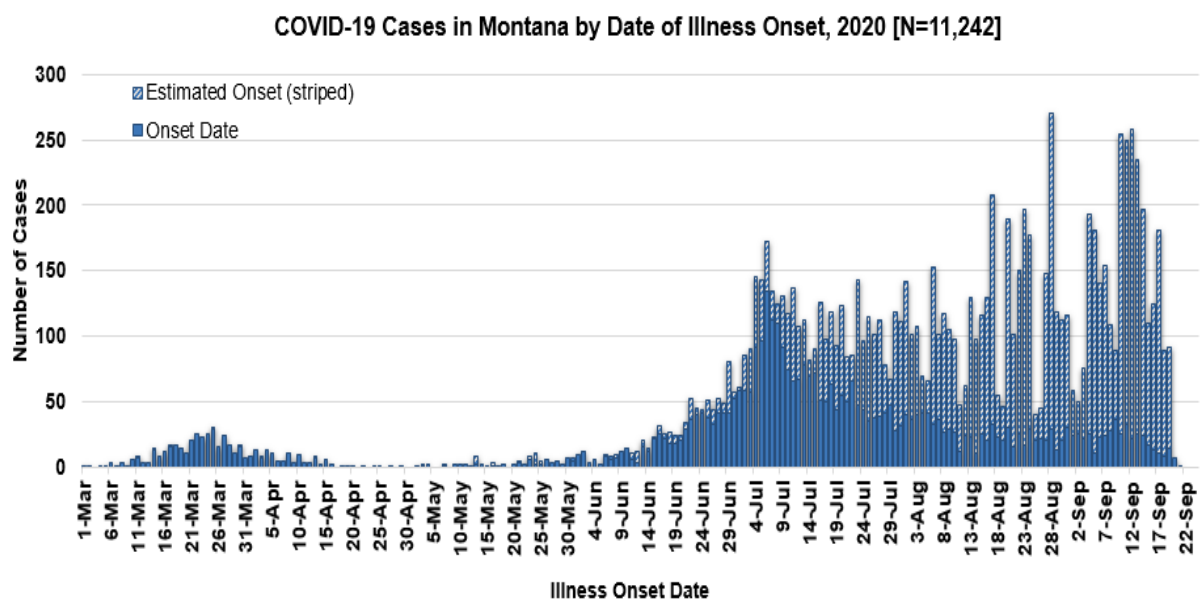
[Additional information on COVID-19 in Montana Long Term Care and Assisted Living Facilities](#)

[Additional information on COVID-19 in Montana schools](#)

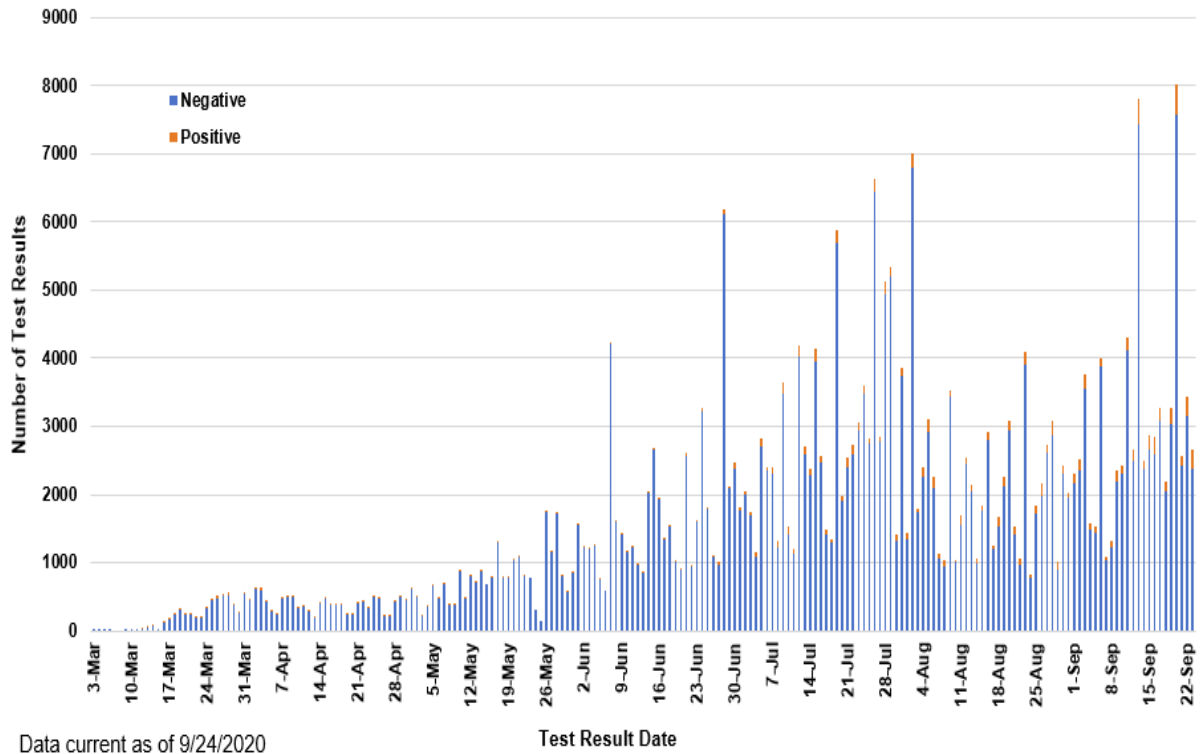
<b>County of Residence</b>	<b>Number of Cases</b>	<b>Number of Deaths</b>	<b>Community Transmission*</b>
Beaverhead	81	1	Yes
Big Horn	873	22	Yes
Blaine	21		
Broadwater	17		
Carbon	115		
Carter	3		
Cascade	643	5	Yes
Chouteau	28		
Custer	111	2	
Daniels	5		
Dawson	76	1	
Deer Lodge	114		
Fallon	5		
Fergus	63	1	
Flathead	934	16	Yes
Gallatin	1282	4	Yes
Garfield	17		
Glacier	227	1	Yes
Golden Valley	3		
Granite	22		
Hill	146	3	
Jefferson	68		
Judith Basin	6		
Lake	265	1	
Lewis and Clark	241	3	Yes
Liberty	18		
Lincoln	107	3	
Madison	101	1	Yes
McCone	19		
Meagher	25	2	
Mineral	2		
Missoula	628	3	Yes
Musselshell	35	1	
Park	93		
Phillips	119		
Pondera	23		
Powder River	7		

County of Residence	Number of Cases	Number of Deaths	Community Transmission*
Powell	12		
Prairie	1		
Ravalli	132	2	Yes
Richland	78	2	
Roosevelt	269	1	
Rosebud	630	18	Yes
Sanders	46	1	
Sheridan	13		
Silver Bow	242		Yes
Stillwater	56	2	
Sweet Grass	42	1	
Teton	21		
Toole	74	6	
Treasure	3		
Valley	70		
Wheatland	11		
Wibaux	9		
Yellowstone	2990	62	Yes
Total	11,242	165	

\* Community transmission - a community has identified cases who are unable to be linked with other known cases or travel. This status has been determined after consultation between state and local health departments.



**SARS-Cov-2 PCR Testing at Montana Public Health Laboratory and Reference Laboratories,  
Montana 2020 [n=321,518]**



View your county's test positivity rate at the [Center for Medicare and Medicaid Services' \(CMS\) webpage](#).

Hospitalization Status	Number of Cases (percent of total)
Ever hospitalized	650 (6%)
Not Hospitalized	10,592 (94%)
Total	11,242

Age Group	Number of Cases (percent of total)
0-9 years	449 (4%)
10-19 years	1045 (9%)
20-29 years	2694 (24%)
30-39 years	1914 (17%)
40-49 years	1481 (13%)
50-59 years	1398 (12%)
60-69 years	1192 (10%)

Age Group	Number of Cases (percent of total)
70-79 years	669 (6%)
80-89 years	315 (3%)
90-99 years	82 (<1%)
100+	3 (<1%)
Total	11,242

Sex	Number of Cases (percent of total)
Female	5673 (50%)
Male	5569 (50%)
Total	11,242

Race and Ethnicity	Number of Cases (percent of total)
White	5623 (50%)
American Indian, Alaska Native, Native Hawaiian, and Pacific Islander	1961 (17%)
Asian	38 (<1%)
Black or African American	69 (<1%)
Other Race	109 (1%)
Undetermined/Under investigation	3381 (31%)
Total	11,242
<b>Among those with ethnicity specified:</b>	
Hispanic/Latino	376 (3%)
Not Hispanic/Latino	7016 (63%)
Undetermined/Under investigation	3850 (34%)
Total	11,242

Current Status of Cases	Number of Cases (percent of total)
Hospitalized	129 (1%)
Deceased	165 (1.5%)
Recovering	2314 (20.5%)

Current Status of Cases	Number of Cases (percent of total)
Recovered and released from isolation	8634 (77%)
Total number of cases	11,242

**Location (at time of testing) of individuals diagnosed but not residing or counted in Montana:**

County	Number of Cases (percent of total)
Beaverhead	3 (1%)
Big Horn	1 (<1%)
Carbon	3 (1%)
Cascade	20 (9%)
Custer	4 (2%)
Dawson	3 (1%)
Deer Lodge	1 (<1%)
Fallon	1 (<1%)
Fergus	2 (1%)
Flathead	46 (19%)
Gallatin	49 (20%)
Glacier	1 (<1%)
Granite	1 (<1%)
Lake	10 (4%)
Lewis and Clark	6 (2%)
Lincoln	3 (1%)
Madison	26 (11%)
Meagher	1 (<1%)
Missoula	14 (5%)
Park	10 (3%)
Powell	1 (<1%)
Ravalli	8 (3%)
Silver Bow	5 (2%)
Stillwater	2 (1%)
Sweet Grass	3 (1%)
Toole	2 (1%)
Yellowstone	20 (9%)
Total	246

*Cases reported in the tables above include **13** residents of other states who were tested, isolated and/or hospitalized in Montana during the early phases of the pandemic. As COVID-19 is now widespread across the United States, data no longer include out-of-state residents who test positive in Montana in order to align with Council of State and Territorial Epidemiologists guidelines that classify cases by the individual's usual state of residence. This is standard practice for all communicable diseases to ensure accurate case reporting for Montana and the US. Additional individuals were diagnosed in Montana but are not included due to residency and/or*

the transient nature of their visit to the state: data for these individuals are reflected in the table immediately above.



## Communicable Disease Epidemiology Staff Listing



To submit a question or comment to the Communicable Disease Epidemiology Program, please click on the suggestion box to access our online form.

 [Diseases A-Z](#)

 [Disease Reporting](#)

 [Data and Reports](#)

 [Contact Us](#)

Other Program Areas

 [Tuberculosis \(TB\)](#)

 [Healthcare Associated Infections \(HAI\)](#)

 [Sexually Transmitted Diseases \(HIV/STD\)](#)

 [Antimicrobial Resistance](#)

 [Follow DPHHS](#)

*The DPHHS CDEpi Section mission is to create, maintain, support, and strengthen routine surveillance and detection systems and epidemiological investigation processes, as well as to expand these systems and processes in response to incidents of public health significance.*

[Nondiscrimination Notice/Policy](#)

[Notice of Use of Protected Health Information](#)

[Disclaimer](#)

[Contact Webmaster](#)

[Language Assistance Available](#)

[Español](#) | [Deutsch](#) | [繁體中文](#) | [日本語](#) | [Tagalog](#) | [Français](#) | [Русский](#) | [한국어](#) | [العربية](#) | [ไทย](#) | [Norsk](#) | [Tiếng Việt](#) | [український](#) | [Pennsilfaanisch Deitsch](#) | [Italiano](#)

