

Coronavirus Disease 2019 (COVID-19)

[Analysis of COVID-19 Cases in Montana as of 9/18/2020](#)

[Archive of COVID-19 Montana Analyses](#)



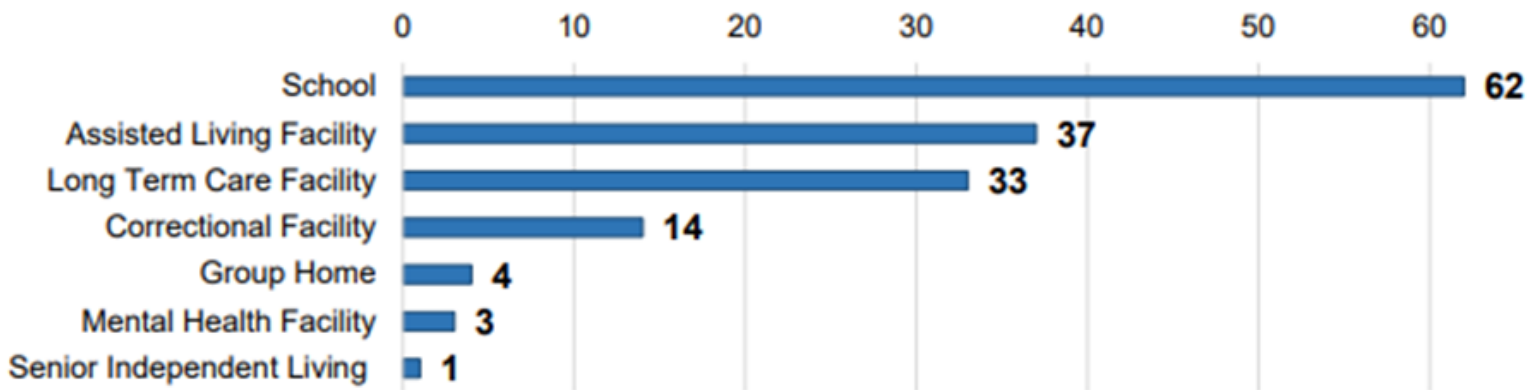
Demographic Information for Confirmed Cases

COVID-19 Cases in Montana	
Total Number of Cases	12,107
- Number of Deaths	173

** Tables and charts are updated by 10 am every morning.*



Number of congregate settings with COVID-19 cases by type in Montana (n=154)



[Additional information on COVID-19 in Montana Long Term Care and Assisted Living Facilities](#)

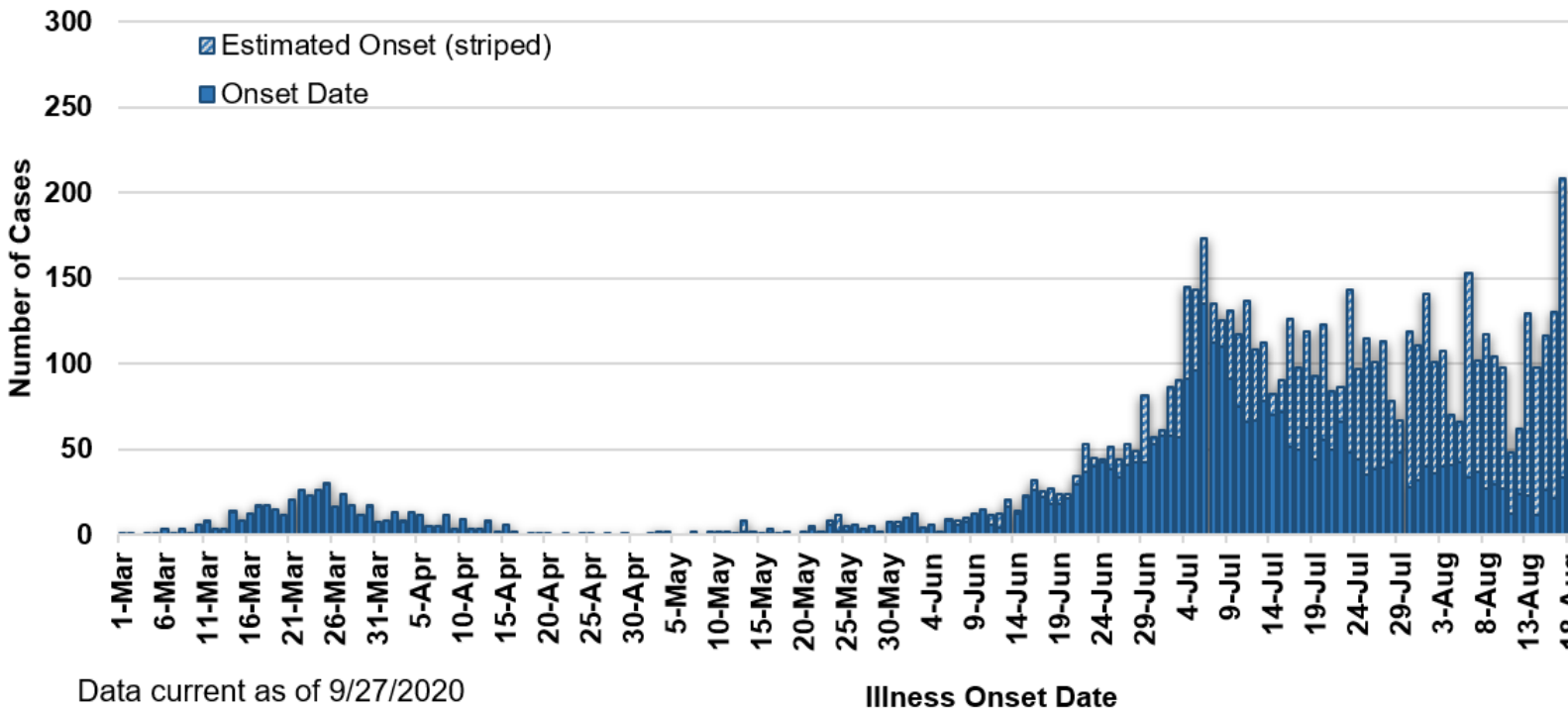
[Additional information on COVID-19 in Montana schools](#)

County of Residence	Number of Cases	Number of Deaths	Community Transmission*
Beaverhead	85	1	Yes
Big Horn	900	22	Yes
Blaine	21		
Broadwater	17		
Carbon	116		
Carter	4		
Cascade	677	5	Yes
Chouteau	29		
Custer	116	2	
Daniels	5		
Dawson	78	1	
Deer Lodge	116		
Fallon	5		
Fergus	63	1	
Flathead	1034	17	Yes
Gallatin	1353	4	Yes
Garfield	17		
Glacier	279	1	Yes
Golden Valley	5		
Granite	22		
Hill	152	3	
Jefferson	77		
Judith Basin	7		
Lake	276	1	
Lewis and Clark	275	3	Yes
Liberty	19		
Lincoln	117	3	
Madison	102	1	Yes
McCone	19		
Meagher	25	2	
Mineral	2		
Missoula	739	3	Yes
Musselshell	35	1	
Park	98		

County of Residence	Number of Cases	Number of Deaths	Community Transmission*
Phillips	121		
Pondera	29		
Powder River	9		
Powell	12		
Prairie	2		
Ravalli	140	2	Yes
Richland	79	2	
Roosevelt	354	4	
Rosebud	635	19	Yes
Sanders	46	1	
Sheridan	13		
Silver Bow	255		Yes
Stillwater	69	2	
Sweet Grass	43	1	
Teton	21		
Toole	76	6	
Treasure	3		
Valley	83		
Wheatland	17	1	
Wibaux	9		
Yellowstone	3,206	64	Yes
Total	12,107	173	

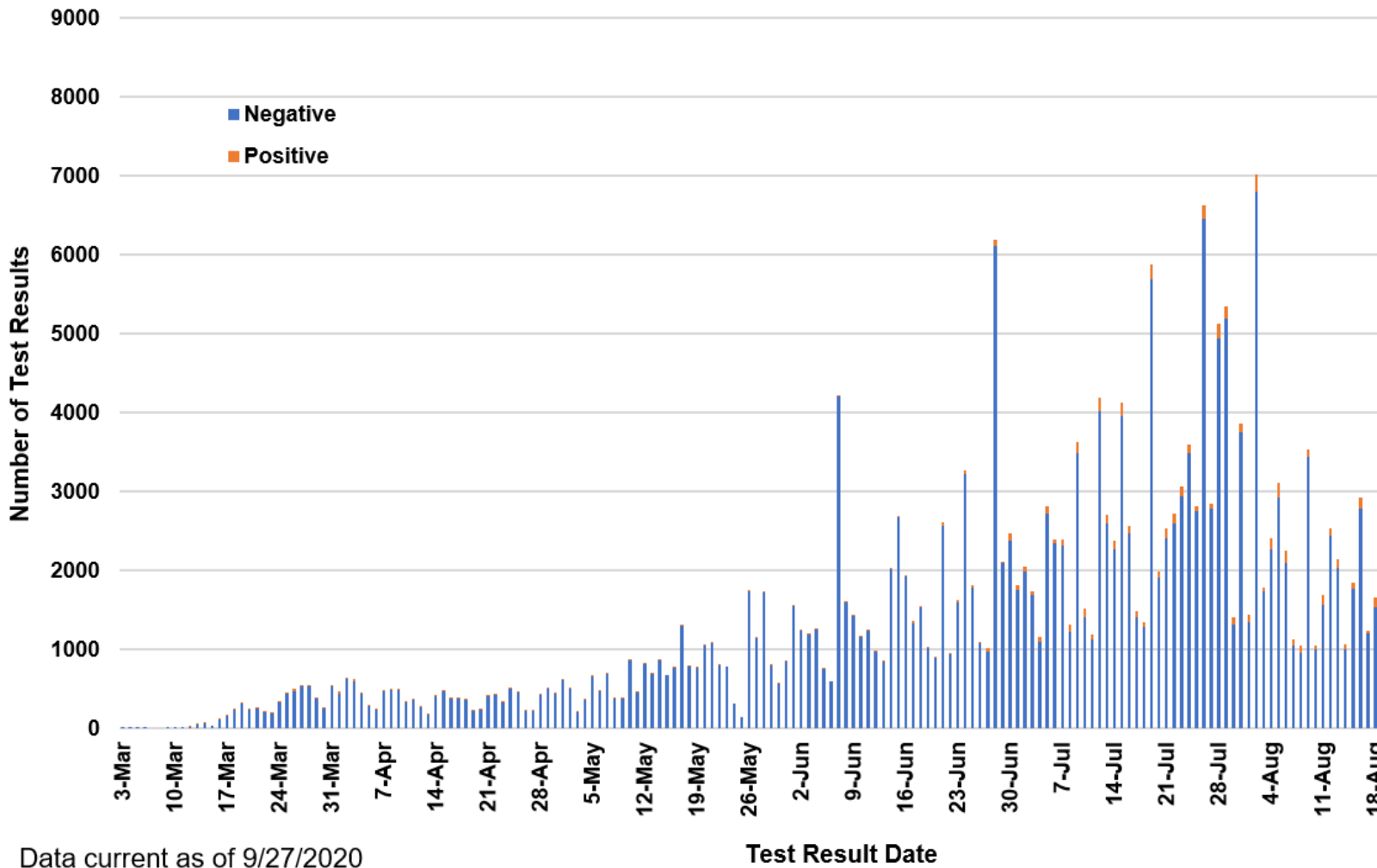
* Community transmission - a community has identified cases who are unable to be linked with other known cases or travel. This status has been determined after consultation between state and local health departments.

COVID-19 Cases in Montana by Date of Illness Onset, 2020 [N=12,107]



Data current as of 9/27/2020

SARS-Cov-2 PCR Testing at Montana Public Health Laboratory and Reference Laboratory Montana 2020 [n=330,307]



View your county's test positivity rate at the [Center for Medicare and Medicaid Services' \(CMS\) webpage](#).

Hospitalization Status	Number of Cases (percent of total)
Ever hospitalized	687 (6%)
Not Hospitalized	11,420 (94%)
Total	12,107

Age Group	Number of Cases (percent of total)
0-9 years	522 (4%)
10-19 years	1,365 (11%)
20-29 years	2,760 (23%)
30-39 years	2,048 (17%)
40-49 years	1,574 (13%)
50-59 years	1,476 (12%)
60-69 years	1,245 (10%)
70-79 years	707 (6%)
80-89 years	331 (3%)
90-99 years	76 (<1%)
100+	3 (<1%)
Total	12,107

Sex	Number of Cases (percent of total)
Female	6,124 (50.5%)
Male	5,983 (49.4%)
Total	12,107

Race and Ethnicity	Number of Cases (percent of total)
White	5,747 (47%)
American Indian, Alaska Native, Native Hawaiian, and Pacific Islander	2,048 (17%)
Asian	39 (<1%)
Black or African American	73 (<1%)
Other Race	109 (1%)
Undetermined/Under investigation	4,090 (34%)
Total	12,107

Among those with ethnicity specified:

Hispanic/Latino	377 (3%)
Not Hispanic/Latino	7,145 (59%)
Undetermined/Under investigation	4,585 (38%)
Total	12,107

Current Status of Cases	Number of Cases (percent of total)
Hospitalized	148 (1.2%)
Deceased	173 (1.4%)
Recovering	3,007 (25%)
Recovered and released from isolation	8,779 (73%)
Total number of cases	12,107

Location (at time of testing) of individuals diagnosed but not residing or counted in Montana:

County	Number of Cases (percent of total)
Beaverhead	3 (1%)
Big Horn	1 (<1%)
Carbon	3 (1%)
Cascade	20 (9%)
Custer	4 (2%)
Dawson	3 (1%)
Deer Lodge	1 (<1%)
Fallon	1 (<1%)
Fergus	2 (1%)
Flathead	46 (19%)
Gallatin	49 (20%)
Glacier	1 (<1%)
Granite	1 (<1%)
Lake	10 (4%)
Lewis and Clark	6 (2%)
Lincoln	3 (1%)
Madison	27 (11%)
Meagher	1 (<1%)
Missoula	14 (5%)
Park	10 (3%)
Powell	1 (<1%)
Ravalli	8 (3%)
Silver Bow	5 (2%)
Stillwater	2 (1%)
Sweet Grass	3 (1%)
Toole	2 (1%)
Yellowstone	20 (9%)

County
Total

Number of Cases (percent of total)
247

Cases reported in the tables above include 13 residents of other states who were tested, isolated and/or hospitalized in Montana during the early phases of the pandemic. As COVID-19 is now widespread across the United States, data no longer include out-of-state residents who test positive in Montana in order to align with Council of State and Territorial Epidemiologists guidelines that classify cases by the individual's usual state of residence. This is standard practice for all communicable diseases to ensure accurate case reporting for Montana and the US. Additional individuals were diagnosed in Montana but are not included due to residency and/or the transient nature of their visit to the state: data for these individuals are reflected in the table immediately above.