

Sheila Hogan, Director

Children/Families

Disabilities

Seniors

Health

[Home](#) » [Public Health & Safety](#) » [Communicable Disease Epidemiology](#) » [Diseases A to Z](#) » [Coronavirus](#) » [Demographics](#)

Coronavirus Disease 2019 (COVID-19)

[Current Montana COVID-19 Epi Profile](#)

[Archive of Montana COVID-19 Epi Profiles](#)

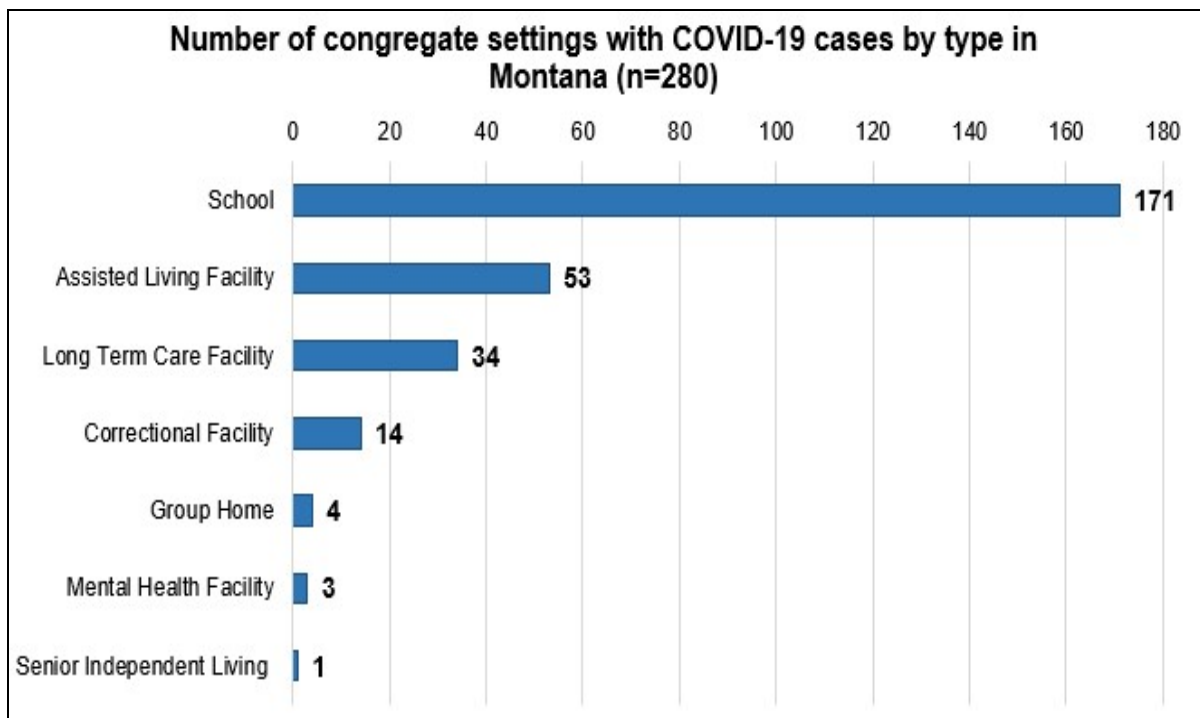


Demographic Information for Confirmed Cases

Data for the following tables are updated daily

COVID-19 Cases in Montana	
Total Number of Cases	14,635
- Number of Deaths	187

** Tables and charts are updated by 10 am every morning.*



Additional information on COVID-19 in Montana Long Term Care and Assisted Living Facilities

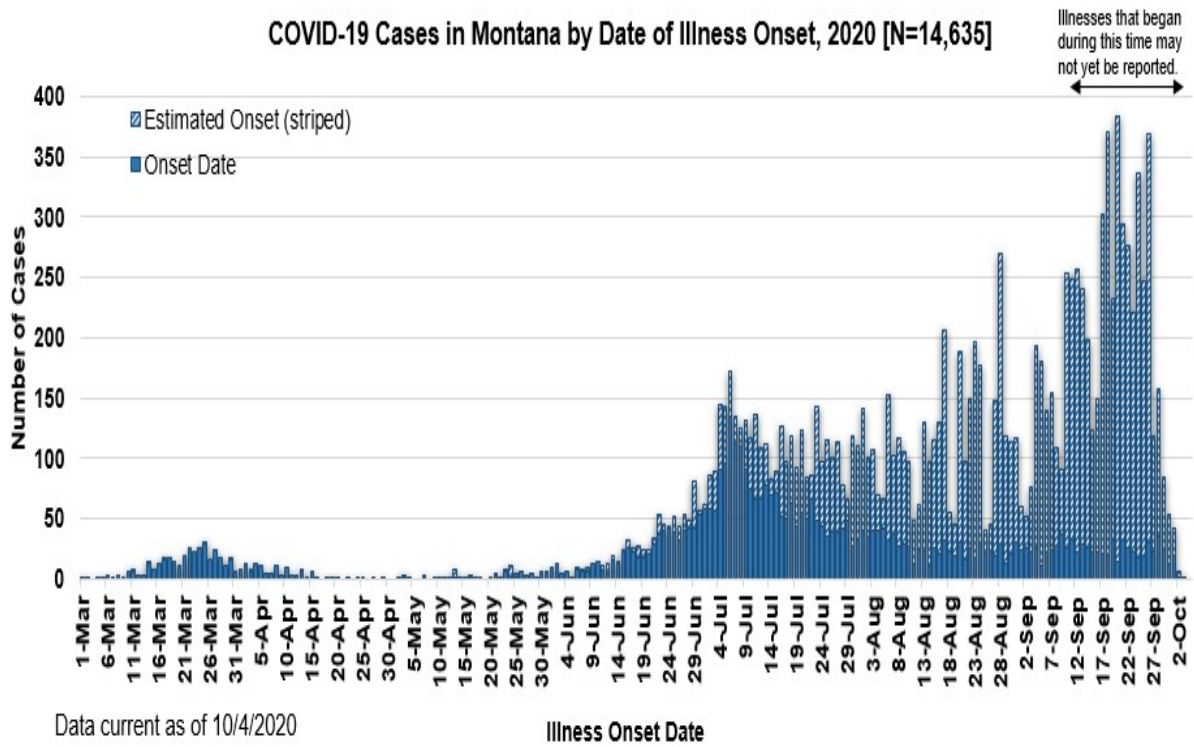
Additional information on COVID-19 in Montana schools

County of Residence	Number of Cases	Number of Deaths	Community Transmission*
Beaverhead	131	1	Yes
Big Horn	958	23	Yes
Blaine	74		
Broadwater	18		
Carbon	131		
Carter	9		
Cascade	879	6	Yes
Chouteau	36		
Custer	122	2	
Daniels	6		
Dawson	87	1	
Deer Lodge	174		
Fallon	16		
Fergus	71	1	
Flathead	1,385	19	Yes
Gallatin	1,579	4	Yes
Garfield	18		
Glacier	441	1	Yes
Golden Valley	5		
Granite	30		
Hill	226	3	
Jefferson	93		
Judith Basin	9		
Lake	292	1	
Lewis and Clark	366	3	Yes
Liberty	20		
Lincoln	149	3	
Madison	117	1	Yes
McCone	27		
Meagher	34	2	Yes
Mineral	6		
Missoula	884	3	Yes
Musselshell	37	1	
Park	113		

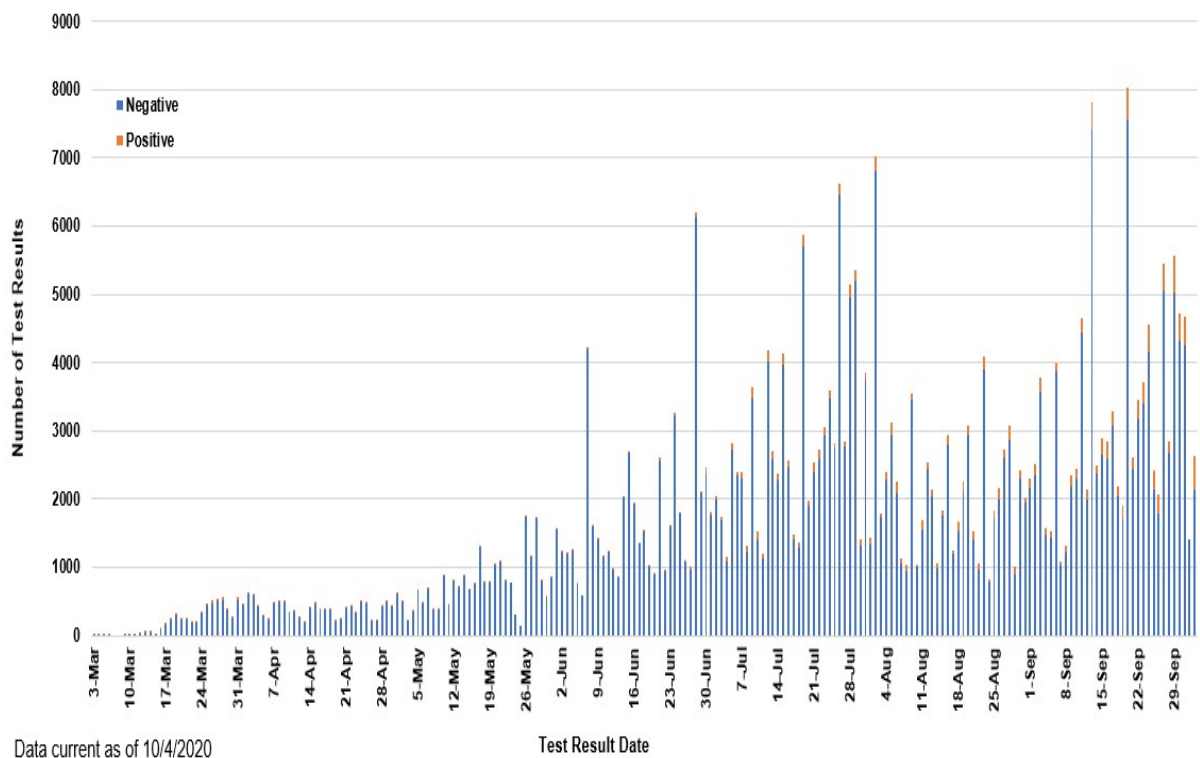
County of Residence	Number of Cases	Number of Deaths	Community Transmission*
Phillips	123		
Pondera	65		
Powder River	25		
Powell	15		
Prairie	14		
Ravalli	174	2	Yes
Richland	135	2	
Roosevelt	414	7	
Rosebud	676	19	Yes
Sanders	56	1	
Sheridan	19		
Silver Bow	291		Yes
Stillwater	90	2	
Sweet Grass	51	2	
Teton	40		
Toole	140	6	
Treasure	3		
Valley	110	1	
Wheatland	21	1	
Wibaux	19		
Yellowstone	3,611	69	Yes
Total	14,635	187	

* Community transmission - a community has identified cases who are unable to be linked with other known cases or travel. This status has been determined after consultation between state and local health departments.

COVID-19 Cases in Montana by Date of Illness Onset, 2020 [N=14,635]



SARS-Cov-2 PCR Testing at Montana Public Health Laboratory and Reference Laboratories, Montana 2020 [n=357,413]



View your county's test positivity rate at the [Center for Medicare and Medicaid Services' \(CMS\) webpage](#).

Hospitalization Status	Number of Cases (percent of total)
Ever hospitalized	744 (5%)
Not Hospitalized	13,891 (95%)
Total	14,635

Age Group	Number of Cases (percent of total)
0-9 years	638 (4%)
10-19 years	1,649 (11%)
20-29 years	3,275 (22%)
30-39 years	2,443 (17%)
40-49 years	1,916 (13%)
50-59 years	1,825 (12%)
60-69 years	1,505 (10%)
70-79 years	876 (6%)
80-89 years	402 (3%)
90-99 years	102 (<1%)
100+	4 (<1%)
Total	14,635

Sex	Number of Cases (percent of total)
Female	7,416 (51%)
Male	7,219 (49%)
Total	14,635

Race and Ethnicity	Number of Cases (percent of total)
White	6,702 (46%)
American Indian, Alaska Native, Native Hawaiian, and Pacific Islander	2,298 (16%)
Asian	45 (<1%)
Black or African American	79 (<1%)
Other Race	177 (1%)
Undetermined/Under investigation	5,334 (36%)

Race and Ethnicity	Number of Cases (percent of total)
Total	14,635
Ethnicity:	
Hispanic/Latino	409 (3%)
Not Hispanic/Latino	8,122 (55%)
Undetermined/Under investigation	6,104 (42%)
Total	14,635

Current Status of Cases	Number of Cases (percent of total)
Hospitalized	191 (1.3%)
Deceased	187 (1.3%)
Recovering	4,660 (32%)
Recovered and released from isolation	9,597 (66%)
Total number of cases	14,635

Location (at time of testing) of individuals diagnosed but not residing or counted in Montana:

County	Number of Cases (percent of total)
Beaverhead	3 (1%)
Big Horn	1 (<1%)
Carbon	3 (1%)
Cascade	20 (9%)
Custer	4 (2%)
Dawson	3 (1%)
Deer Lodge	1 (<1%)
Fallon	1 (<1%)
Fergus	2 (1%)
Flathead	46 (19%)
Gallatin	49 (20%)
Glacier	1 (<1%)
Granite	1 (<1%)
Lake	10 (4%)
Lewis and Clark	6 (2%)
Lincoln	3 (1%)
Madison	27 (11%)
Meagher	1 (<1%)
Missoula	17 (7%)

County	Number of Cases (percent of total)
Park	10 (3%)
Powell	1 (<1%)
Ravalli	8 (3%)
Silver Bow	5 (2%)
Stillwater	2 (1%)
Sweet Grass	3 (1%)
Toole	2 (1%)
Yellowstone	20 (9%)
Total	250

Cases reported in the tables above include **13** residents of other states who were tested, isolated and/or hospitalized in Montana during the early phases of the pandemic. As COVID-19 is now widespread across the United States, data no longer include out-of-state residents who test positive in Montana in order to align with Council of State and Territorial Epidemiologists guidelines that classify cases by the individual's usual state of residence. This is standard practice for all communicable diseases to ensure accurate case reporting for Montana and the US. Additional individuals were diagnosed in Montana but are not included due to residency and/or the transient nature of their visit to the state: data for these individuals are reflected in the table immediately above.



Communicable Disease Epidemiology Staff Listing



To submit a question or comment to the Communicable Disease Epidemiology Program, please click on the suggestion box to access our online form.

 [Diseases A-Z](#)

 [Disease Reporting](#)

 [Data and Reports](#)

 [Contact Us](#)

Other Program Areas

 [Tuberculosis \(TB\)](#)

 [Healthcare Associated Infections \(HAI\)](#)

 [Sexually Transmitted Diseases \(HIV/STD\)](#)

 [Antimicrobial Resistance](#)



The DPHHS CDEpi Section mission is to create, maintain, support, and strengthen routine surveillance and detection systems and epidemiological investigation processes, as well as to expand these systems and processes in response to incidents of public health significance.

Nondiscrimination Notice/Policy

Notice of Use of Protected Health Information

Disclaimer

Contact Webmaster

Language Assistance Available

**Español | Deutsch | 繁體中文 | 日本語 | Tagalog | Français | Русский | 한국어 | العربية | ไทย | Norsk |
Tiếng Việt | український | Pennsilfaanisch Deitsch | Italiano**