

Coronavirus Disease 2019 (COVID-19)

[Current Montana COVID-19 Epi Profile](#)

[Archive of Montana COVID-19 Epi Profiles](#)



Demographic Information for Confirmed Cases

Data for the following tables are updated daily

COVID-19 Cases in Montana	
Total Number of Cases	16,063
- Number of Deaths	193

** Tables and charts are updated by 10 am every morning.*



Number of congregate settings with COVID-19 cases by type in Montana (n=280)



[Additional information on COVID-19 in Montana Long Term Care and Assisted Living Facilities](#)

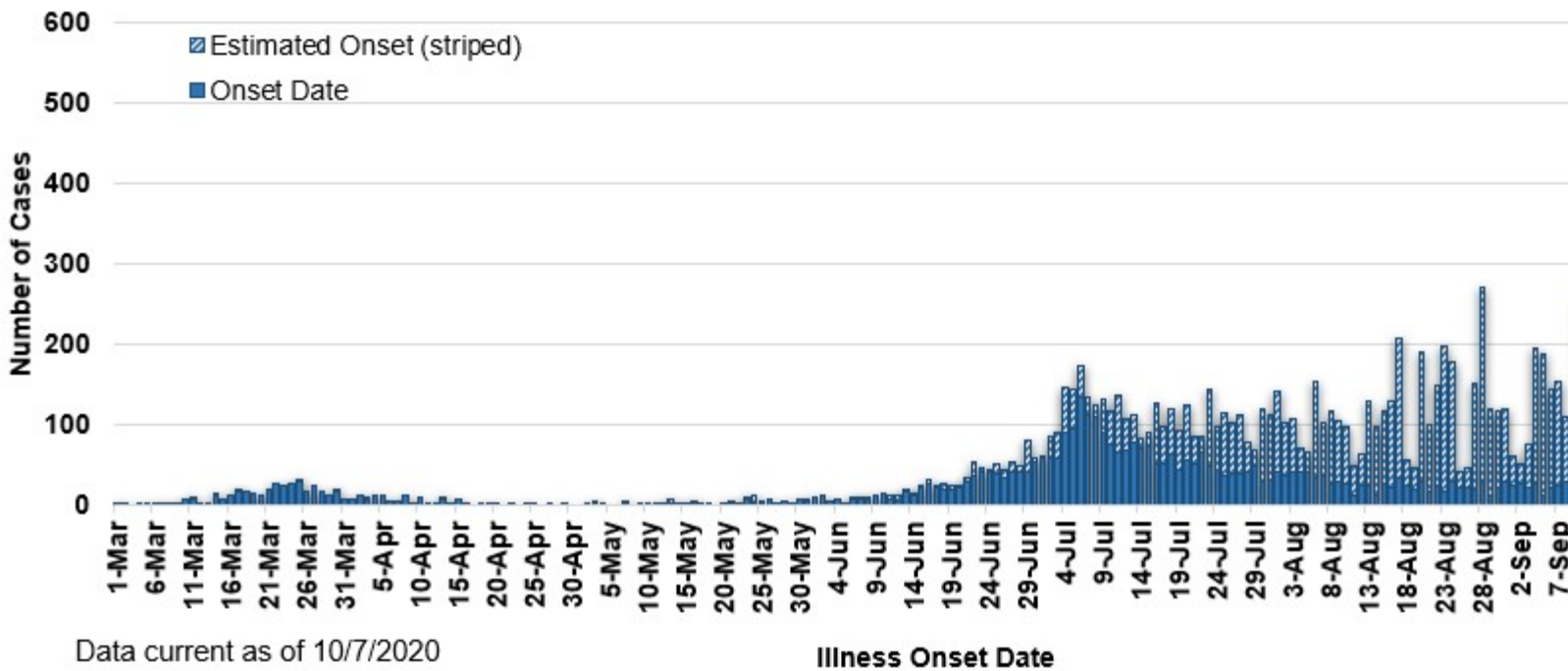
[Additional information on COVID-19 in Montana schools](#)

County of Residence	Number of Cases	Number of Deaths	Community Transmission*
Beaverhead	154	1	Yes
Big Horn	990	23	Yes
Blaine	100		
Broadwater	20		
Carbon	134		
Carter	9		
Cascade	953	6	Yes
Chouteau	39		
Custer	125	2	
Daniels	12		
Dawson	96	1	
Deer Lodge	207		
Fallon	18		
Fergus	82	1	
Flathead	1,583	19	Yes
Gallatin	1,678	4	Yes
Garfield	18		
Glacier	583	1	Yes
Golden Valley	5		
Granite	32		
Hill	269	5	
Jefferson	96		
Judith Basin	9		
Lake	315	1	
Lewis and Clark	392	3	Yes

County of Residence	Number of Cases	Number of Deaths	Community Transmission*
Liberty	22		
Lincoln	157	3	Yes
Madison	118	1	Yes
McCone	27		
Meagher	38	2	Yes
Mineral	7		
Missoula	1,131	4	Yes
Musselshell	37	1	
Park	125		
Petroleum	1		
Phillips	124		
Pondera	81	1	
Powder River	27		
Powell	15		
Prairie	20		
Ravalli	180	2	Yes
Richland	141	2	
Roosevelt	467	8	
Rosebud	693	19	Yes
Sanders	63	1	
Sheridan	27		
Silver Bow	308		Yes
Stillwater	99	3	
Sweet Grass	52	2	
Teton	46		
Toole	159	6	
Treasure	6		
Valley	121	1	
Wheatland	21	1	
Wibaux	24		
Yellowstone	3,807	69	Yes
Total	16,063	193	

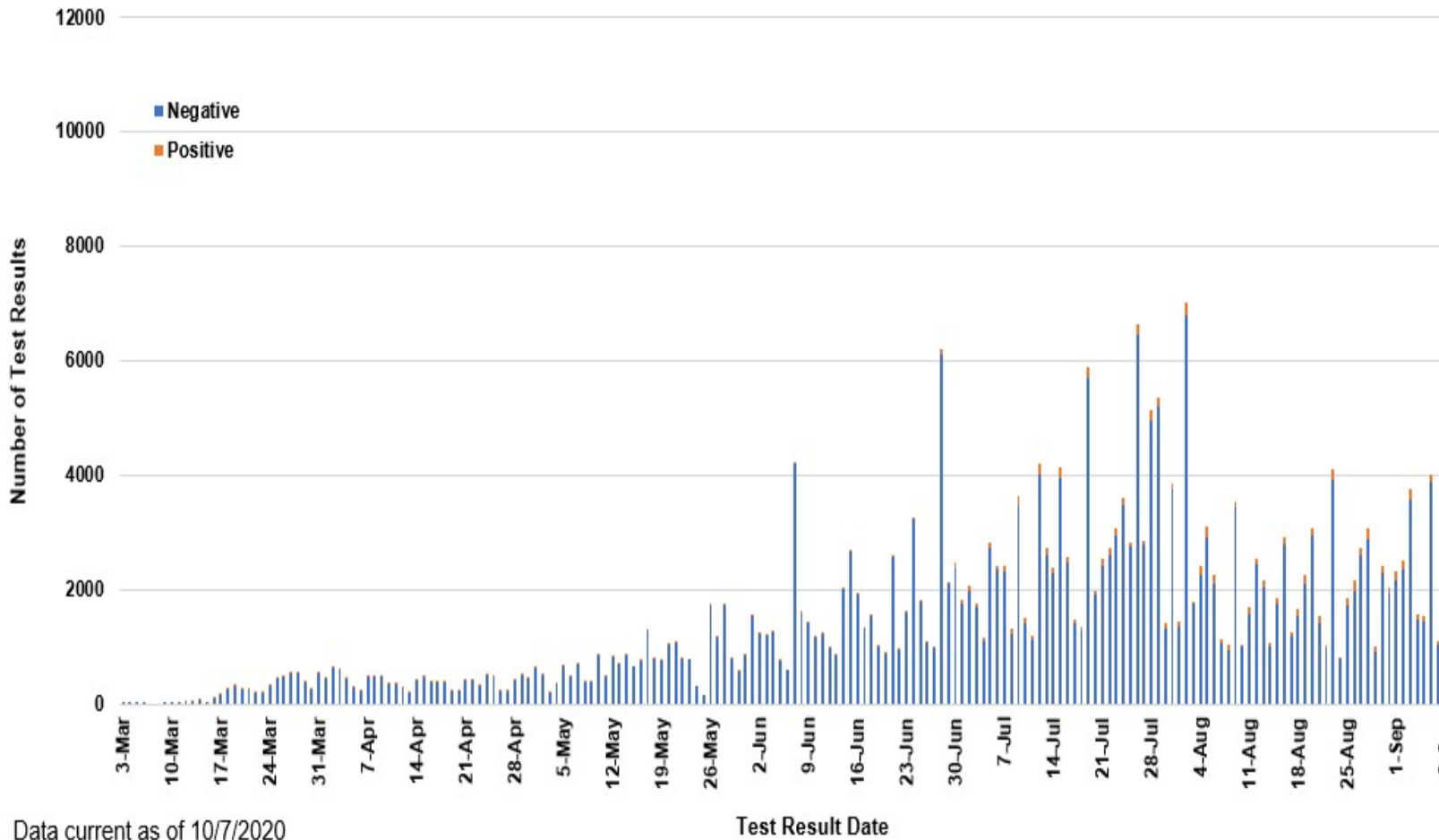
* Community transmission - a community has identified cases who are unable to be linked with other known cases or travel. This status has been determined after consultation between state and local health departments.

COVID-19 Cases in Montana by Date of Illness Onset, 2020 [N=16,063]



Data current as of 10/7/2020

SARS-Cov-2 PCR Testing at Montana Public Health Laboratory and Reference Laboratories, Montana 2020 [n=376,



View your county's test positivity rate at the [Center for Medicare and Medicaid Services' \(CMS\) webpage](#).

Hospitalization Status	Number of Cases (percent of total)
Ever hospitalized	820 (5%)
Not Hospitalized	15,243 (95%)
Total	16,063

Age Group	Number of Cases (percent of total)
0-9 years	701 (4%)
10-19 years	1,822 (11%)
20-29 years	3,546 (22%)
30-39 years	2,678 (17%)
40-49 years	2,082 (13%)
50-59 years	2,009 (13%)
60-69 years	1,668 (10%)
70-79 years	986 (6%)
80-89 years	443 (3%)
90-99 years	123 (<1%)
100+	5 (<1%)
Total	16,063

Sex	Number of Cases (percent of total)
Female	8,146 (51%)
Male	7,917 (49%)
Total	16,063

Race and Ethnicity	Number of Cases (percent of total)
White	7,230 (45%)
American Indian, Alaska Native, Native Hawaiian, and Pacific Islander	2,486 (15%)
Asian	48 (<1%)
Black or African American	81 (<1%)
Other Race	235 (1%)
Undetermined/Under investigation	5,5983 (37%)
Total	16,063
Ethnicity:	
Hispanic/Latino	435 (3%)
Not Hispanic/Latino	8,681 (54%)
Undetermined/Under investigation	6,947 (43%)
Total	16,063

Current Status of Cases	Number of Cases (percent of total)
Hospitalized	235 (1.5%)
Deceased	193 (1.2%)
Recovering	5,117 (32%)
Recovered and released from isolation	10,518 (65%)
Total number of cases	16,063

Location (at time of testing) of individuals diagnosed but not residing or counted in Montana:

County	Number of Cases (percent of total)
Beaverhead	3 (1%)
Big Horn	1 (<1%)
Carbon	3 (1%)
Cascade	20 (9%)
Custer	4 (2%)
Dawson	3 (1%)
Deer Lodge	1 (<1%)
Fallon	1 (<1%)
Fergus	2 (1%)
Flathead	46 (19%)
Gallatin	49 (20%)
Glacier	1 (<1%)
Granite	1 (<1%)
Lake	10 (4%)
Lewis and Clark	6 (2%)
Lincoln	3 (1%)
Madison	27 (11%)
Meagher	1 (<1%)
Missoula	17 (7%)
Park	10 (3%)
Powell	1 (<1%)
Ravalli	8 (3%)
Silver Bow	5 (2%)
Stillwater	2 (1%)
Sweet Grass	3 (1%)
Toole	2 (1%)
Yellowstone	20 (9%)
Total	250

*Cases reported in the tables above include **13** residents of other states who were tested, isolated and/or hospitalized in Montana during the early phases of the pandemic. As COVID-19 is now widespread across the United States, data no longer include out-of-state residents who test positive in Montana in order to align with Council of State and Territorial Epidemiologists guidelines that classify cases by the individual's usual state of residence. This is standard practice for all communicable diseases to ensure accurate case reporting for Montana and the US. Additional individuals were diagnosed in Montana but are not included due to residency and/or the transient nature of their visit to the state: data for these individuals are reflected in the table immediately above.*