

Sheila Hogan, Director

Children/Families

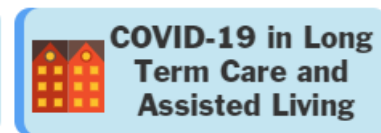
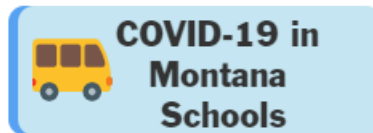
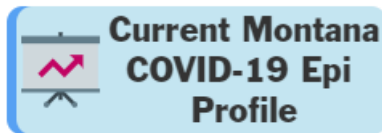
Disabilities

Seniors

Health

[Home](#) » [Public Health & Safety](#) » [Communicable Disease Epidemiology](#) » [Diseases A to Z](#) » [Coronavirus](#) » [Demographics](#)

Coronavirus Disease 2019 (COVID-19)



[Archive of Montana COVID-19 Epi Profiles](#)



Demographic Information for Confirmed Cases

Data for the following tables are updated daily

COVID-19 Cases in Montana	
Total Number of Cases	22,233
- Number of Deaths	240

** Tables and charts are updated by 10 am every morning.*

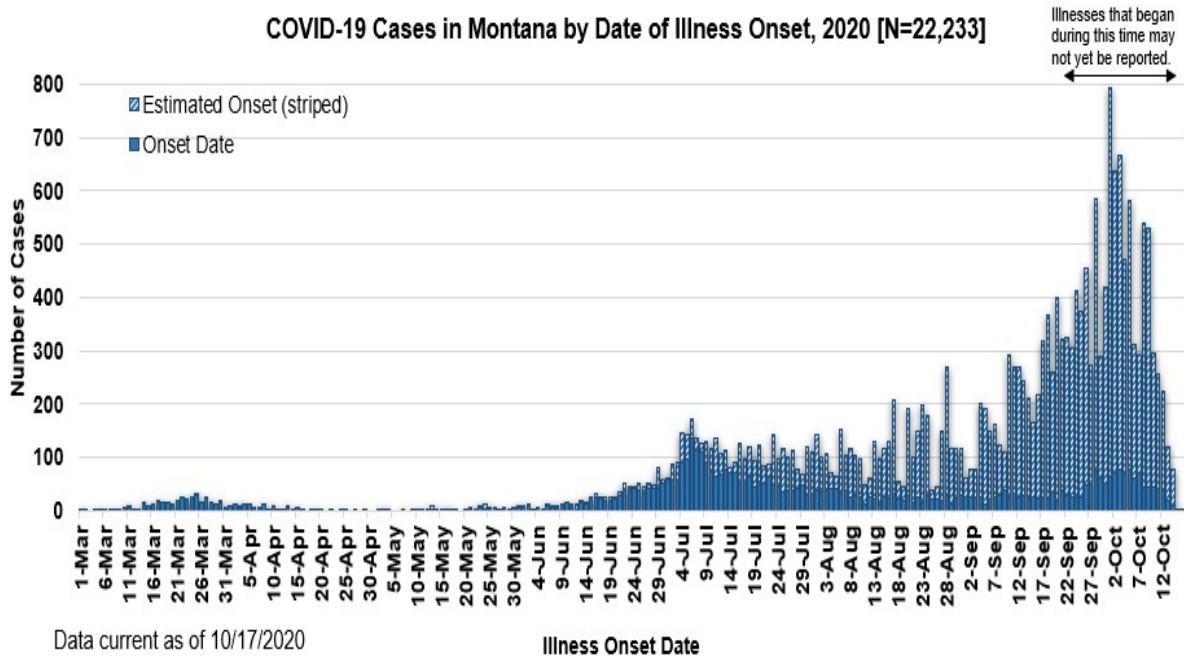


County of Residence	Number of Cases	Number of Deaths	Community Transmission*
Beaverhead	231	1	Yes
Big Horn	1,111	32	Yes
Blaine	193	2	
Broadwater	38		
Carbon	195		
Carter	31		
Cascade	1,371	6	Yes
Chouteau	52		
Custer	185	2	Yes
Daniels	15		
Dawson	157	1	
Deer Lodge	320		
Fallon	32		
Fergus	159	2	
Flathead	2,403	23	Yes
Gallatin	2,183	5	Yes
Garfield	19		
Glacier	777	2	Yes
Golden Valley	6		
Granite	50		
Hill	498	10	
Jefferson	124		
Judith Basin	12		
Lake	425	1	
Lewis and Clark	573	3	Yes

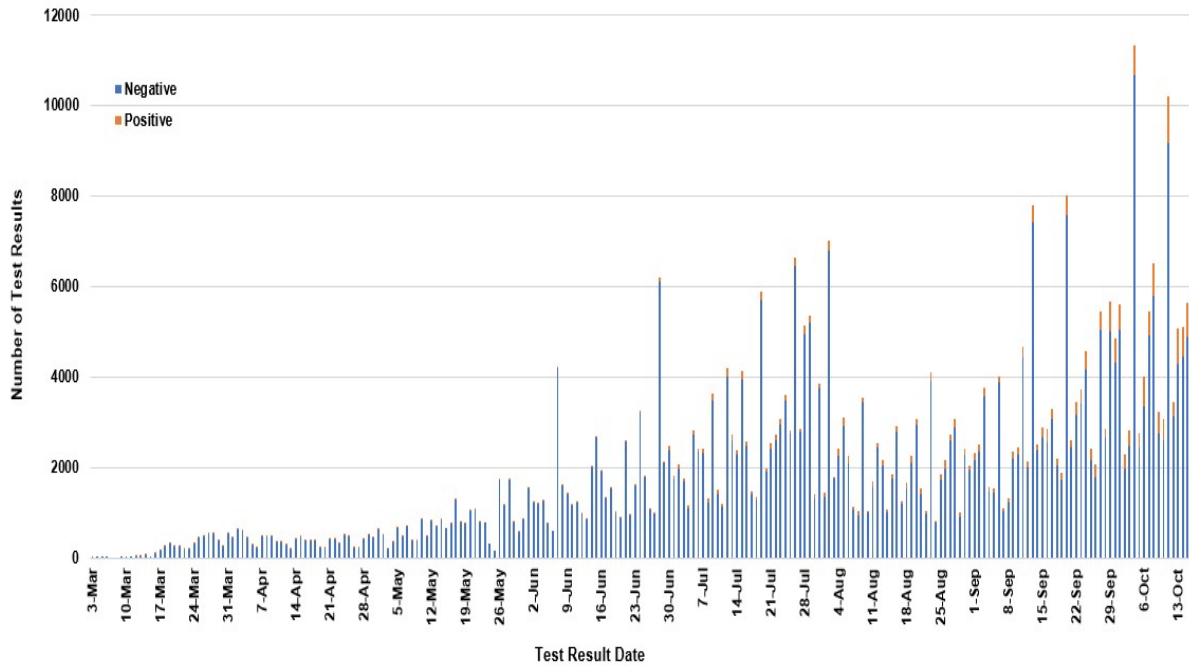
County of Residence	Number of Cases	Number of Deaths	Community Transmission*
Liberty	28		
Lincoln	243	3	Yes
Madison	131	1	Yes
McCone	45		
Meagher	49	2	Yes
Mineral	13		
Missoula	1,549	7	Yes
Musselshell	63	1	
Park	169		
Petroleum	3		
Phillips	142		
Pondera	133	1	
Powder River	47	3	
Powell	37		
Prairie	29		
Ravalli	316	4	Yes
Richland	194	2	
Roosevelt	762	14	
Rosebud	723	20	Yes
Sanders	82	1	
Sheridan	42		
Silver Bow	412		Yes
Stillwater	141	3	
Sweet Grass	58	2	
Teton	71		Yes
Toole	298	6	
Treasure	10		
Valley	248	2	
Wheatland	58	1	
Wibaux	36		
Yellowstone	4,941	77	Yes
Total	22,233	240	

* Community transmission - a community has identified cases who are unable to be linked with other known cases or travel. This status has been determined after consultation between state and local health departments.

COVID-19 Cases in Montana by Date of Illness Onset, 2020 [N=22,233]



SARS-Cov-2 PCR Testing at Montana Public Health Laboratory and Reference Laboratories, Montana 2020 [n=428,128]



View your county's test positivity rate at the [Center for Medicare and Medicaid Services' \(CMS\) webpage](#).

Hospitalization Status	Number of Cases (percent of total)
Ever hospitalized	1,001 (5%)
Not Hospitalized	21,232 (95%)
Total	22,233

Age Group	Number of Cases (percent of total)
-----------	------------------------------------

Age Group	Number of Cases (percent of total)
0-9 years	978 (4%)
10-19 years	2,555 (11%)
20-29 years	4,686 (21%)
30-39 years	3,587 (16%)
40-49 years	2,932 (13%)
50-59 years	2,843 (13%)
60-69 years	2,362 (11%)
70-79 years	1,414 (6%)
80-89 years	654 (3%)
90-99 years	207 (1%)
100+	15 (<1%)
Total	22,233

Sex	Number of Cases (percent of total)
Female	11,462 (51%)
Male	10,771 (49%)
Total	22,233

Race and Ethnicity	Number of Cases (percent of total)
White	9,339 (42%)
American Indian, Alaska Native, Native Hawaiian, and Pacific Islander	3,016 (14%)
Asian	57 (<1%)
Black or African American	94 (<1%)
Other Race	430 (2%)
Undetermined/Under investigation	9,297 (42%)
Total	22,233

Race and Ethnicity	Number of Cases (percent of total)
Ethnicity:	
Hispanic/Latino	493 (2%)
Not Hispanic/Latino	10,667 (48%)
Undetermined/Under investigation	11,073 (50%)
Total	22,233

Current Status of Cases	Number of Cases (percent of total)
Hospitalized	324 (1.5%)
Deceased	240 (1.1%)
Recovering	8,274 (37%)
Recovered and released from isolation	13,395 (60%)
Total number of cases	22,233

Location (at time of testing) of individuals diagnosed but not residing or counted in Montana:

County	Number of Cases (percent of total)
Beaverhead	3 (1%)
Big Horn	1 (<1%)
Carbon	3 (1%)
Cascade	20 (9%)
Custer	4 (2%)
Dawson	3 (1%)
Deer Lodge	1 (<1%)
Fallon	1 (<1%)
Fergus	2 (1%)
Flathead	46 (19%)
Gallatin	49 (20%)
Glacier	1 (<1%)
Granite	1 (<1%)
Lake	10 (4%)
Lewis and Clark	6 (2%)
Lincoln	3 (1%)
Madison	27 (11%)
Meagher	1 (<1%)
Missoula	17 (7%)
Park	10 (3%)

County	Number of Cases (percent of total)
Powell	1 (<1%)
Ravalli	8 (3%)
Silver Bow	5 (2%)
Stillwater	2 (1%)
Sweet Grass	3 (1%)
Toole	2 (1%)
Yellowstone	20 (9%)
Total	250

Cases reported in the tables above include **13** residents of other states who were tested, isolated and/or hospitalized in Montana during the early phases of the pandemic. As COVID-19 is now widespread across the United States, data no longer include out-of-state residents who test positive in Montana in order to align with Council of State and Territorial Epidemiologists guidelines that classify cases by the individual's usual state of residence. This is standard practice for all communicable diseases to ensure accurate case reporting for Montana and the US. Additional individuals were diagnosed in Montana but are not included due to residency and/or the transient nature of their visit to the state: data for these individuals are reflected in the table immediately above.



Communicable Disease Epidemiology

Staff Listing



To submit a question or comment to the Communicable Disease Epidemiology Program, please click on the suggestion box to access our online form.

 [Diseases A-Z](#)

 [Disease Reporting](#)

 [Data and Reports](#)

 [Contact Us](#)

Other Program Areas

 [Tuberculosis \(TB\)](#)

 [Healthcare Associated Infections \(HAI\)](#)

 [Sexually Transmitted Diseases \(HIV/STD\)](#)

 [Antimicrobial Resistance](#)



The DPHHS CDEpi Section mission is to create, maintain, support, and strengthen routine surveillance and detection systems and epidemiological investigation processes, as well as to expand these systems and processes in response to incidents of public health significance.

Nondiscrimination Notice/Policy

Notice of Use of Protected Health Information

Disclaimer

Contact Webmaster

Language Assistance Available

**Español | Deutsch | 繁體中文 | 日本語 | Tagalog | Français | Русский | 한국어 | العربية | ไทย | Norsk |
Tiếng Việt | український | Pennsilfaanisch Deitsch | Italiano**