

Sheila Hogan, Director

Children/Families

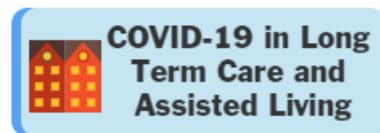
Disabilities

Seniors

Health

[Home](#) » [Public Health & Safety](#) » [Communicable Disease Epidemiology](#) » [Diseases A to Z](#) » [Coronavirus](#) » [Demographics](#)

Coronavirus Disease 2019 (COVID-19)



[Archive of Montana COVID-19 Epi Profiles](#)



Demographic Information for Confirmed Cases

Data for the following tables are updated daily

COVID-19 Cases in Montana	
Total Number of Cases	30,853
- Number of Deaths	337

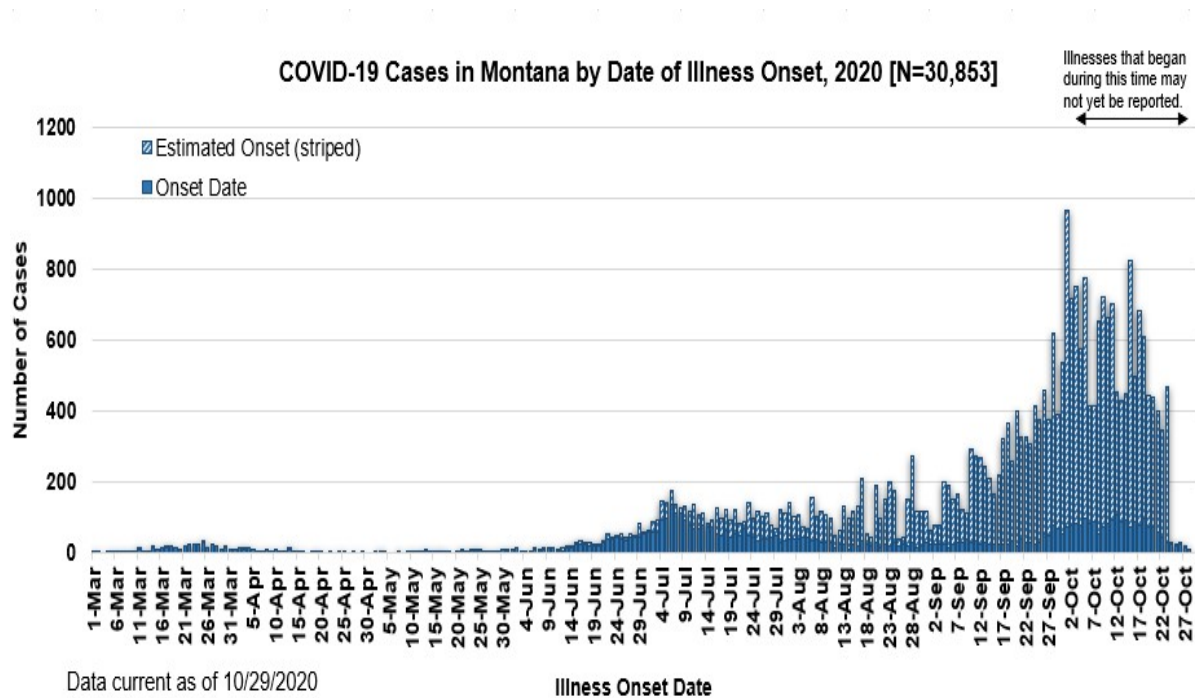
** Tables and charts are updated by 10 am every morning.*

County of Residence	Number of Cases	Number of Deaths	Community Transmission*
Beaverhead	280	1	Yes
Big Horn	1,376	38	Yes
Blaine	326	7	
Broadwater	80		
Carbon	245		

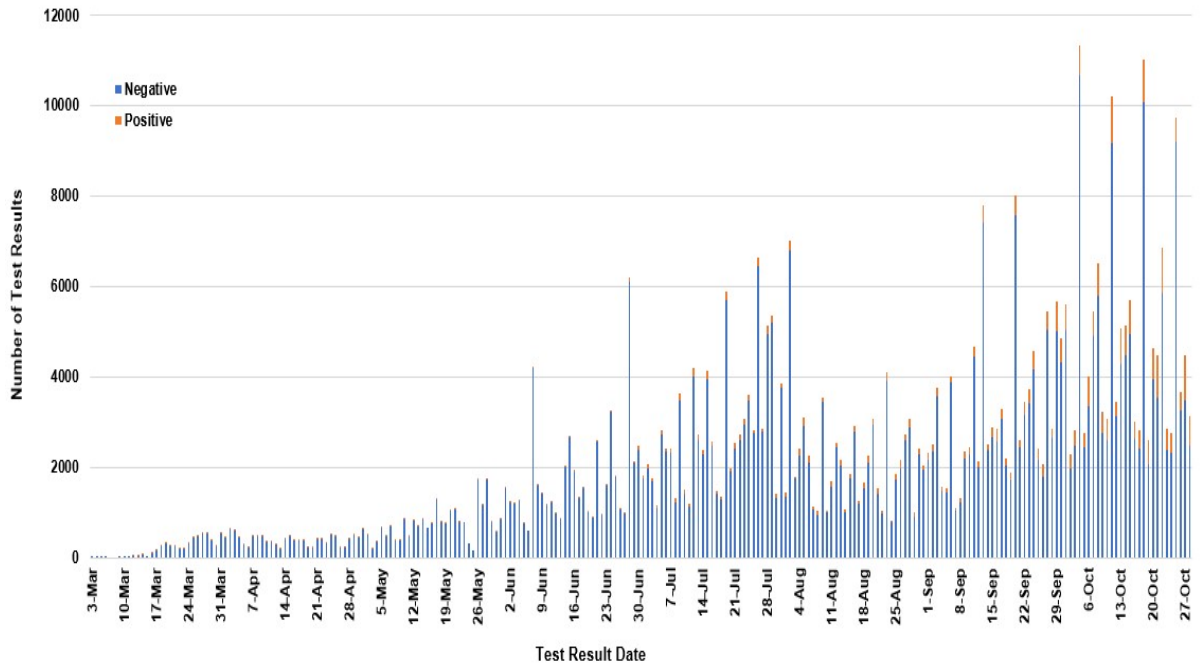
County of Residence	Number of Cases	Number of Deaths	Community Transmission*
Carter	69		
Cascade	2,027	13	Yes
Chouteau	105		
Custer	319	3	Yes
Daniels	41	1	
Dawson	247	4	
Deer Lodge	444	1	
Fallon	67		
Fergus	228	2	
Flathead	3,291	27	Yes
Gallatin	3,137	6	Yes
Garfield	24		
Glacier	964	13	Yes
Golden Valley	16		
Granite	67		
Hill	823	20	
Jefferson	174		
Judith Basin	15		
Lake	579	4	
Lewis and Clark	1,011	6	Yes
Liberty	31		
Lincoln	313	3	Yes
Madison	177	1	Yes
McCone	61		
Meagher	79	4	Yes
Mineral	15		
Missoula	2,229	15	Yes
Musselshell	111	2	
Park	260		
Petroleum	3		
Phillips	177		
Pondera	184	1	
Powder River	62	5	
Powell	137		
Prairie	33		
Ravalli	503	4	Yes
Richland	338	5	
Roosevelt	936	19	

County of Residence	Number of Cases	Number of Deaths	Community Transmission*
Rosebud	772	21	Yes
Sanders	97	2	
Sheridan	73		
Silver Bow	582	2	Yes
Stillwater	218	3	
Sweet Grass	87	2	
Teton	90		Yes
Toole	314	6	
Treasure	24	1	
Valley	358	4	
Wheatland	69	3	
Wibaux	42		
Yellowstone	6,521	88	Yes
Total	30,853	337	

* Community transmission - a community has identified cases who are unable to be linked with other known cases or travel. This status has been determined after consultation between state and local health departments.



SARS-Cov-2 PCR Testing at Montana Public Health Laboratory and Reference Laboratories, Montana 2020 [n=487,607]



View your county's test positivity rate at the [Center for Medicare and Medicaid Services' \(CMS\) webpage](#).

Hospitalization Status	Number of Cases (percent of total)
Ever hospitalized	1,311 (4%)
Not Hospitalized	29,542 (96%)
Total	30,853

Age Group	Number of Cases (percent of total)
0-9 years	1,306 (4%)
10-19 years	3,528 (11%)
20-29 years	6,280 (20%)
30-39 years	5,001 (16%)
40-49 years	4,081 (13%)
50-59 years	4,027 (13%)
60-69 years	3,350 (11%)
70-79 years	1,994 (7%)
80-89 years	944 (3%)

Age Group	Number of Cases (percent of total)
90-99 years	319 (1%)
100+	23 (<1%)
Total	30,853

Sex	Number of Cases (percent of total)
Female	15,998 (52%)
Male	14,855 (48%)
Total	30,853

Race and Ethnicity	Number of Cases (percent of total)
White	12,138 (39%)
American Indian, Alaska Native, Native Hawaiian, and Pacific Islander	3,562 (12%)
Asian	68 (<1%)
Black or African American	111 (<1%)
Other Race	804 (2%)
Undetermined/Under investigation	14,170 (46%)
Total	30,853
Ethnicity:	
Hispanic/Latino	568 (2%)
Not Hispanic/Latino	13,278 (43%)
Undetermined/Under investigation	17,007 (55%)
Total	30,853

Current Status of Cases	Number of Cases (percent of total)
Hospitalized	373 (1%)
Deceased	337 (1%)
Recovering	10,101 (33%)
Recovered and released from isolation	20,042 (65%)
Total number of cases	30,853

Location (at time of testing) of individuals diagnosed but not residing or counted in

Montana:

County	Number of Cases (percent of total)
Beaverhead	3 (1%)
Big Horn	1 (<1%)
Carbon	3 (1%)
Cascade	20 (9%)
Custer	4 (2%)
Dawson	3 (1%)
Deer Lodge	1 (<1%)
Fallon	1 (<1%)
Fergus	2 (1%)
Flathead	46 (19%)
Gallatin	49 (20%)
Glacier	1 (<1%)
Granite	1 (<1%)
Lake	10 (4%)
Lewis and Clark	6 (2%)
Lincoln	3 (1%)
Madison	27 (11%)
Meagher	1 (<1%)
Missoula	17 (7%)
Park	10 (3%)
Powell	1 (<1%)
Ravalli	8 (3%)
Silver Bow	5 (2%)
Stillwater	2 (1%)
Sweet Grass	3 (1%)
Toole	2 (1%)
Yellowstone	20 (9%)
Total	250

*Cases reported in the tables above include **13** residents of other states who were tested, isolated and/or hospitalized in Montana during the early phases of the pandemic. As COVID-19 is now widespread across the United States, data no longer include out-of-state residents who test positive in Montana in order to align with Council of State and Territorial Epidemiologists guidelines that classify cases by the individual's usual state of residence. This is standard practice for all communicable diseases to ensure accurate case reporting for Montana and the US. Additional individuals were diagnosed in Montana but are not included due to residency and/or the transient nature of their visit to the state: data for these individuals are reflected in the table immediately above.*

Communicable Disease Epidemiology Staff Listing



To submit a question or comment to the Communicable Disease Epidemiology Program, please click on the suggestion box to access our online form.

 [Diseases A-Z](#)

 [Disease Reporting](#)

 [Data and Reports](#)

 [Contact Us](#)

Other Program Areas

 [Tuberculosis \(TB\)](#)

 [Healthcare Associated Infections \(HAI\)](#)

 [Sexually Transmitted Diseases \(HIV/STD\)](#)

 [Antimicrobial Resistance](#)

 [Follow DPHHS](#)

The DPHHS CDEpi Section mission is to create, maintain, support, and strengthen routine surveillance and detection systems and epidemiological investigation processes, as well as to expand these systems and processes in response to incidents of public health significance.

[Nondiscrimination Notice/Policy](#)

[Notice of Use of Protected Health Information](#)

[Disclaimer](#)

[Contact Webmaster](#)

[Language Assistance Available](#)

[Español](#) | [Deutsch](#) | [繁體中文](#) | [日本語](#) | [Tagalog](#) | [Français](#) | [Русский](#) | [한국어](#) | [العربية](#) | [ไทย](#) | [Norsk](#) | [Tiếng Việt](#) | [український](#) | [Pennsilfaanisch Deutsch](#) | [Italiano](#)