

Sheila Hogan, Director

Children/Families

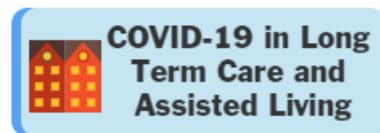
Disabilities

Seniors

Health

[Home](#) » [Public Health & Safety](#) » [Communicable Disease Epidemiology](#) » [Diseases A to Z](#) » [Coronavirus](#) » [Demographics](#)

Coronavirus Disease 2019 (COVID-19)



[Archive of Montana COVID-19 Epi Profiles](#)



Demographic Information for Confirmed Cases

Data for the following tables are updated daily

COVID-19 Cases in Montana	
Total Number of Cases	36,968
- Number of Deaths	407

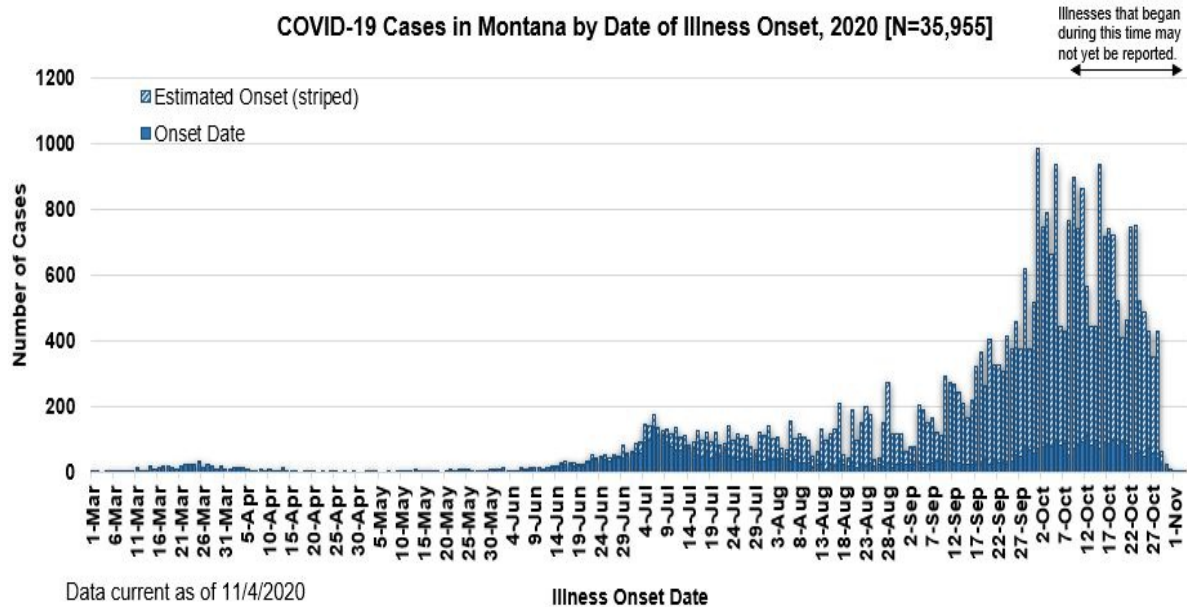
** Tables and charts are updated by 10 am every morning.*

County of Residence	Number of Cases	Number of Deaths	Community Transmission*
Beaverhead	318	1	Yes
Big Horn	1,491	40	Yes
Blaine	398	8	
Broadwater	96		

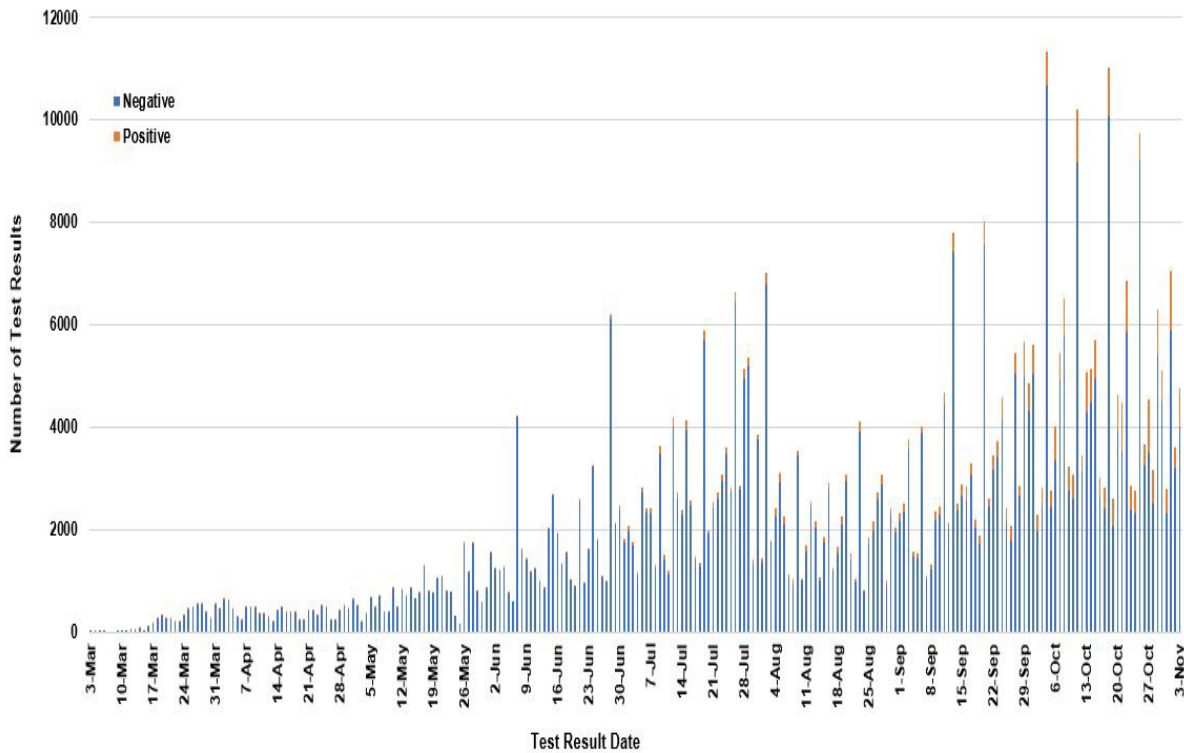
County of Residence	Number of Cases	Number of Deaths	Community Transmission*
Carbon	292	1	
Carter	84	2	
Cascade	2,648	16	Yes
Chouteau	134		
Custer	400	5	Yes
Daniels	55	3	
Dawson	320	4	
Deer Lodge	502	6	
Fallon	98		
Fergus	277	2	
Flathead	3,864	27	Yes
Gallatin	4,057	9	Yes
Garfield	31		
Glacier	1,101	16	Yes
Golden Valley	16		
Granite	81		
Hill	980	20	
Jefferson	211		
Judith Basin	19		
Lake	676	7	
Lewis and Clark	1,264	7	Yes
Liberty	39		
Lincoln	355	6	Yes
Madison	232	1	Yes
McCone	71		
Meagher	94	5	Yes
Mineral	17		
Missoula	2,697	24	Yes
Musselshell	138	2	
Park	312		
Petroleum	4		
Phillips	202	1	
Pondera	200	1	
Powder River	71	5	
Powell	220		
Prairie	36		
Ravalli	609	4	Yes

County of Residence	Number of Cases	Number of Deaths	Community Transmission*
Richland	376	6	
Roosevelt	1,066	30	
Rosebud	885	21	Yes
Sanders	119	2	
Sheridan	111		
Silver Bow	734	5	Yes
Stillwater	261	3	
Sweet Grass	125	2	
Teton	102	1	Yes
Toole	457	8	
Treasure	24	1	
Valley	430	5	
Wheatland	74	3	
Wibaux	457		
Yellowstone	7,447	97	Yes
Total	36,968	407	

* Community transmission - a community has identified cases who are unable to be linked with other known cases or travel. This status has been determined after consultation between state and local health departments.



SARS-Cov-2 PCR Testing at Montana Public Health Laboratory and Reference Laboratories, Montana 2020 [n=517,288]



View your county's test positivity rate at the [Center for Medicare and Medicaid Services' \(CMS\) webpage](#).

Hospitalization Status	Number of Cases (percent of total)
Ever hospitalized	1,421 (4%)
Not Hospitalized	35,547 (96%)
Total	36,968

Age Group	Number of Cases (percent of total)
0-9 years	1,534 (4%)
10-19 years	4,224 (11%)
20-29 years	7,468 (20%)
30-39 years	6,018 (16%)
40-49 years	4,944 (13%)
50-59 years	4,837 (13%)
60-69 years	4,039 (11%)

Age Group	Number of Cases (percent of total)
70-79 years	2,378 (6%)
80-89 years	1,127 (3%)
90-99 years	374 (1%)
100+	25 (<1%)
Total	36,968

Sex	Number of Cases (percent of total)
Female	19,161 (52%)
Male	17,807 (48%)
Total	36,968

Race and Ethnicity	Number of Cases (percent of total)
White	14,214 (38%)
American Indian, Alaska Native, Native Hawaiian, and Pacific Islander	3,898 (11%)
Asian	73 (<1%)
Black or African American	126 (<1%)
Other Race	1,177 (3%)
Undetermined/Under investigation	17,480(47%)
Total	36,968
Ethnicity:	
Hispanic/Latino	617 (2%)
Not Hispanic/Latino	15,042 (41%)
Undetermined/Under investigation	21,309 (58%)
Total	36,968

Current Status of Cases	Number of Cases (percent of total)
Hospitalized	414 (1%)
Deceased	407 (1%)
Recovering	12,847 (36%)

Current Status of Cases	Number of Cases (percent of total)
Recovered and released from isolation	23,300 (62%)
Total number of cases	36,968

Location (at time of testing) of individuals diagnosed but not residing or counted in Montana:

County	Number of Cases (percent of total)
Beaverhead	3 (1%)
Big Horn	1 (<1%)
Carbon	3 (1%)
Cascade	20 (9%)
Custer	4 (2%)
Dawson	3 (1%)
Deer Lodge	1 (<1%)
Fallon	1 (<1%)
Fergus	2 (1%)
Flathead	46 (19%)
Gallatin	49 (20%)
Glacier	1 (<1%)
Granite	1 (<1%)
Lake	10 (4%)
Lewis and Clark	6 (2%)
Lincoln	3 (1%)
Madison	27 (11%)
Meagher	1 (<1%)
Missoula	17 (7%)
Park	10 (3%)
Powell	1 (<1%)
Ravalli	8 (3%)
Silver Bow	5 (2%)
Stillwater	2 (1%)
Sweet Grass	3 (1%)
Toole	2 (1%)
Yellowstone	20 (9%)
Total	250

Cases reported in the tables above include 13 residents of other states who were tested, isolated and/or hospitalized in Montana during the early phases of the pandemic. As COVID-19 is now widespread across the United States, data no longer include out-of-state residents who test positive in Montana in order to align with Council of State and Territorial Epidemiologists guidelines that classify cases by the individual's usual state of residence. This is standard practice for all communicable diseases to ensure accurate case reporting for Montana and the US. Additional individuals were diagnosed in Montana but are not included due to residency and/or

the transient nature of their visit to the state: data for these individuals are reflected in the table immediately above.



Communicable Disease Epidemiology Staff Listing



To submit a question or comment to the Communicable Disease Epidemiology Program, please click on the suggestion box to access our online form.

 [Diseases A-Z](#)

 [Disease Reporting](#)

 [Data and Reports](#)

 [Contact Us](#)

Other Program Areas

 [Tuberculosis \(TB\)](#)

 [Healthcare Associated Infections \(HAI\)](#)

 [Sexually Transmitted Diseases \(HIV/STD\)](#)

 [Antimicrobial Resistance](#)

 [Follow DPHHS](#)

The DPHHS CDEpi Section mission is to create, maintain, support, and strengthen routine surveillance and detection systems and epidemiological investigation processes, as well as to expand these systems and processes in response to incidents of public health significance.

[Nondiscrimination Notice/Policy](#)

[Notice of Use of Protected Health Information](#)

[Disclaimer](#)

[Contact Webmaster](#)

[Language Assistance Available](#)

[Español](#) | [Deutsch](#) | [繁體中文](#) | [日本語](#) | [Tagalog](#) | [Français](#) | [Русский](#) | [한국어](#) | [العربية](#) | [ไทย](#) | [Norsk](#) | [Tiếng Việt](#) | [український](#) | [Pennsilfaanisch Deitsch](#) | [Italiano](#)

